

**100%** Money Back  
**Guarantee**

**Vendor:** Symantec

**Exam Code:** ST0-306

**Exam Name:** Symantec Enterprise Vault 11.x Technical  
Assessment

**Version:** Demo

**QUESTION 1**

What are two capabilities of enabling Symantec Enterprise Vault 11.x for Exchange for Outlook Web Access/App (OWA) users? (Select two.)

- A. enables remote access via OWA with Safari browser
- B. provides remote access to multiple user archives
- C. enables IMAP access for mobile devices
- D. enables Virtual Vault for OWA users
- E. enables Vault Cache for OWA users

**Correct Answer:** AB

**QUESTION 2**

What are two benefits of Symantec Enterprise Vault 11.x for Exchange? (Select two.)

- A. it archives directly to tape
- B. it facilitates faster backup of the messaging servers
- C. it is unnecessary to backup Exchange when Journaling is enabled
- D. it automatically duplicates archive data
- E. it provides OSIS for archived email

**Correct Answer:** BE

**QUESTION 3**

Which two key benefits are provided by Symantec Enterprise Vault 11.x? (Select two.)

- A. it natively archives all structured data
- B. it archives unstructured data
- C. it allows administrators to import PST files into the archive
- D. it eliminates the need for backups
- E. it eliminates the need for centralized information management

**Correct Answer:** BC

**QUESTION 4**

Symantec Enterprise Vault 11.x for Exchange converts mail message attachments in order to ensure future proofing.

Which file format is used?

- A. .dvs
- B. .xml
- C. .html
- D. .tif

**Correct Answer:** C

**QUESTION 5**

How many document types can be converted by Symantec Enterprise Vault 11.x indexing?

- A. less than 100
- B. approximately 200
- C. approximately 400
- D. more than 1000

**Correct Answer:** C

**QUESTION 6**

Which task requires the permissions of the Vault Service Account as a minimum in Symantec Enterprise Vault 11.x?

- A. managing and assigning custom roles
- B. defining an Exchange Mailbox Archiving Policy
- C. verifying connectivity to the SQL server
- D. restarting the Enterprise Vault 11.x for Exchange services

**Correct Answer:** A

**QUESTION 7**

Which two components comprise the Symantec Enterprise Vault 11.x for Exchange Directory? (Select two.)

- A. Directory Fingerprint database
- B. Directory Service
- C. Directory SQL database
- D. Directory Administration Role
- E. Directory Provisioning Task

**Correct Answer:** BC

**QUESTION 8**

Which function is controlled by the Enterprise Vault Admin Service?

- A. managing access to databases for other Enterprise Vault components
- B. defining which users' data is processed
- C. warning if virtual memory is running low
- D. managing the mail and file servers from which data is archived

**Correct Answer:** C

**QUESTION 9**

An administrator enables the Metadata Store in Symantec Enterprise Vault 11.x.

Which Enterprise Vault components will be impacted by the change?

- A. Enterprise Vault Index
- B. Storage queue
- C. MS SQL server and the space that the databases require
- D. Vault Store size

**Correct Answer:** C

**QUESTION 10**

An organization uses three Exchange servers in a single domain and two Symantec Enterprise Vault 11.x for Exchange (EV) servers.

How many Provisioning tasks are required?

- A. one per target domain
- B. one per EV server
- C. one per Exchange server
- D. one per EV Directory

**Correct Answer:** A

**QUESTION 11**

An organization needs to use the Update Service Locations (USL) feature of Symantec Enterprise Vault 11.x for Exchange (EV).

Which two physical EV resources must be remote to the EV servers for this feature to work seamlessly? (Select two.)

- A. SQL Server
- B. Archiving targets
- C. Index Server Groups
- D. Vault Store Partitions
- E. Message Queuing

**Correct Answer:** AD

**QUESTION 12**

Of which security group must the Vault Service Account be a member?

- A. the Application Administrators Group of the Enterprise Vault server
- B. the Exchange Administrators Group on each Exchange server
- C. the Local Administrators Group of the Enterprise Vault server
- D. the Built-in Exchange Organization Administrators Group

**Correct Answer:** C

**QUESTION 13**

What is the Symantec recommended amount of memory required for Symantec Enterprise Vault 11.x?

- A. 8GB
- B. 16GB
- C. 32GB
- D. 64GB

**Correct Answer:** B

**QUESTION 14**

Where is the Enterprise Vault system mailbox created?

- A. on active members of a Database Availability Group only
- B. on the Global Catalog server in the domain
- C. on each target Exchange server in the domain
- D. on the first Exchange server in the domain

**Correct Answer:** C

**QUESTION 15**

When a user is enabled for archiving, an e-mail is sent from the Enterprise Vault system mailbox.

Which permissions must be granted to the Vault Service Account for this feature to work properly?

- A. Log on as a service
- B. Receive As
- C. Log on remotely
- D. Send As

**Correct Answer:** C

**QUESTION 16**

Which two tasks must be performed after configuring the Outlook Web Access (OWA) Data Access account? (Select two.)

- A. Run the Provisioning task
- B. Run the Exchange Mailbox Archiving task
- C. Restart the Admin Service
- D. Restart the Directory Service
- E. Synchronize all mailboxes

**Correct Answer:** CE

**QUESTION 17**

Which steps must an administrator take when moving the Vault Service Account Temp folder to another disk?

- A. create a new "WindowsTemp" DWORD key to HKey\_Local\_Machine > Software > WOW6432 > KVS > Storage with a value of the new path
- B. modify the path in the TEMP and TMP variables in the properties of My Computer > Advanced tab > Environment Variables > User Variables
- C. edit the Windows Temp Storage field inside the Enterprise Vault Site properties > Advanced tab > Storage
- D. add the new path to the Cache Location of the properties of the Enterprise Vault server > Cache tab

**Correct Answer:** B

**QUESTION 18**

An administrator needs to remove an Index Server from an Index Server Group and place it in another group.

When can this process be completed?

- A. during the processing time of the Index Administration task
- B. before archived items have been indexed
- C. when the Indexing Service is stopped
- D. after indexes have been put into Backup mode

**Correct Answer:** B

**QUESTION 19**

Which step(s) are necessary to install Message Queuing (MSMQ) in preparation for configuring a Windows cluster?

- A. use Computer Manager to manually move c:\windows\system32\msmq to a shared cluster disk resource
- B. use the Windows Failover Cluster Manager to add the Message Queuing resource; in the properties add the MSMQ disk to the resource list
- C. use the Component Services snap-in to manually move c:\windows\system32\msmq to a shared cluster disk resource
- D. use the Windows Failover Cluster Manager to add the MSMQ resource; add c:\windows\system32\msmq to the resource list and convert it to a shared disk

**Correct Answer:** B

**QUESTION 20**

Which two customer scenarios are likely to result in multiple Enterprise Vault (EV) directories? (Select two.)

- A. separate active directory domains with bi-directional trusts
- B. security or administrative boundaries between different groups of the organization
- C. different retention policy requirements between different departments in the business
- D. different single instance requirements for different departments in the business
- E. very slow connectivity between archiving targets and EV servers in different data centers

**Correct Answer:** BE

**QUESTION 21**

After a new installation of Symantec Enterprise Vault 11.x for Exchange (EV), which step must an administrator perform before running a PowerShell cmdlet for the first time?

- A. manually set and clear Backup mode on the Site once
- B. run the EV Policy Manager once
- C. run the EV Management Shell once
- D. run powershell.exe and the PowerShell console switch PSConsole once

**Correct Answer:** C

**QUESTION 22**

An administrator has created a number of Ready Partitions for Vault Store Partition rollover.

How can the rollover order be changed?

- A. use a PowerShell script cmdlet: Start-PartitionRollover
- B. use the Vault Administration Console: Site > Common Tasks > Storage Management
- C. use a PowerShell script cmdlet: Set-PartitionPriority
- D. use the Vault Administration Console: Vault Store > Properties > Partition Rollover

**Correct Answer:** D

**QUESTION 23**

Which action must an administrator take to view the clustered message queues for an Enterprise Vault clustered server?

- A. the "Component Services" snap-in located in the Microsoft MMC console
- B. the ClusterCompMgmt command located in the Enterprise Vault installation folder (typically C:\Program Files (x86)\Enterprise Vault)
- C. the "Computer Management" snap-in located in the Microsoft MMC console
- D. the ClusterPerfMon command located in the Enterprise Vault installation folder (typically C:\Program Files (x86)\Enterprise Vault)

**Correct Answer:** B

**QUESTION 24**

An Enterprise Vault administrator intends to secure IMAP connections using SSL.

What are two requirements for the SSL certificate? (Select two.)

- A. A certificate signing request (CSR) must be sent to Symantec VeriSign.
- B. The certificate must be in PEM format.
- C. It must be a Subject Alternate Name (SAN) certificate.
- D. The certificate must be Base64 encoded.
- E. The certificate must be in p7b format.

**Correct Answer:** BD

**QUESTION 25**

Which two ways can an administrator access the Exchange mailbox archiving report for the purpose of verifying the last time a user mailbox was archived? (Select two.)

- A. use the Get-ExchMBXArchRep PowerShell cmdlet
- B. Administration Console > open the Exchange Server Properties: Reporting tab
- C. Administration Console > open the Exchange Mailbox Task Properties: Reporting tab
- D. SQL Reporting Services > Open the "Hourly rate" report
- E. Exchange mailbox archiving reports site summary page at the following URL:  
<http://evserver/EnterpriseVault/ExchangeArchivingReports.aspx>

**Correct Answer:** CE

#### **QUESTION 26**

A user has mistakenly deleted several items from the mailbox archive. The default site setting "Enable recovery of user deleted items" is selected and set to 14 days. The Enterprise Vault administrator recovers the items.

What is the result of this action?

- A. specified deleted items newer than 14 days will be recovered to the mailbox
- B. all deleted items newer than 14 days will be recovered to the mailbox
- C. all deleted items newer than 14 days will be recovered to the archive
- D. specified deleted items newer than 14 days will be recovered to a PST

**Correct Answer:** C

#### **QUESTION 27**

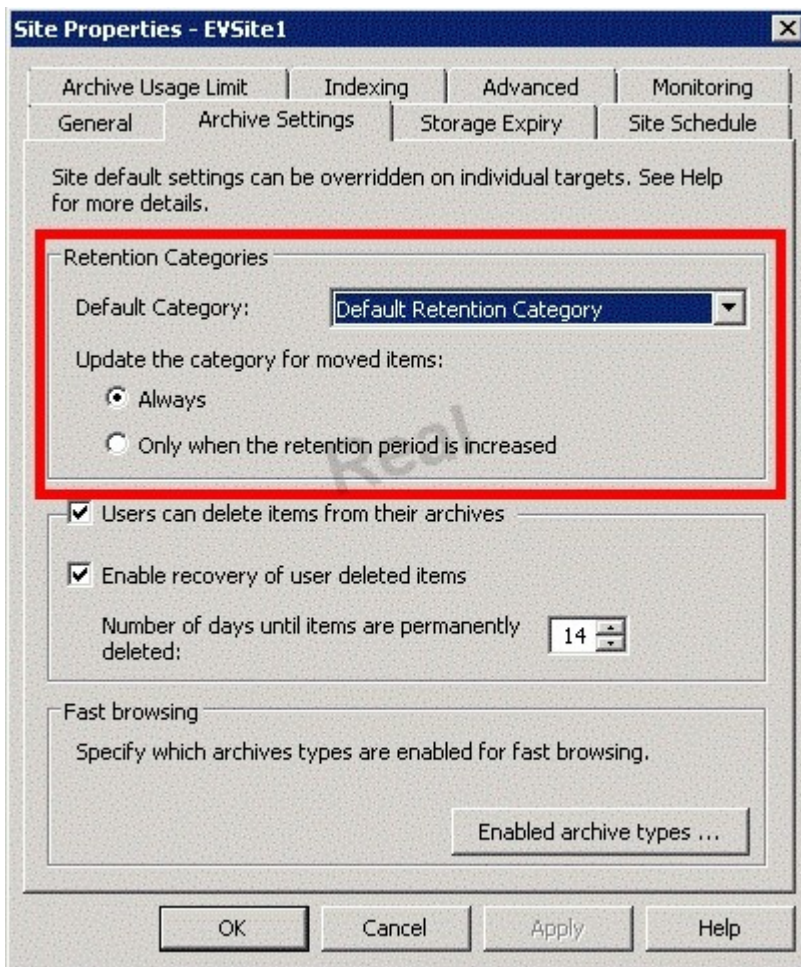
Which component must be enabled for a user to access their archive with IMAP?

- A. Enterprise Vault Search
- B. Metadata Store
- C. MIME Optimized Single-Instance Storage
- D. TCP port 443

**Correct Answer:** B

#### **QUESTION 28**

Refer to the Exhibit.



What does the Site Setting shown in the red box apply to?

- A. pending shortcut items
- B. mailbox shortcuts
- C. archives moved using the Move Archive wizard
- D. Storage Queue items

**Correct Answer:** B

#### QUESTION 29

An administrator finds several Failed Operations > Copy items when reviewing Operations Manager > Exchange Monitoring > Summary

Why are these items displaying as failed operations?

- A. there are corrupt messages in the user archives
- B. there are corrupt messages in the journal mailboxes
- C. user messages are failing conversion
- D. journal messages are failing conversion

**Correct Answer:** B

#### QUESTION 30

Which tool is available to report the progress of the database upgrade process for Symantec Enterprise Vault 11.x?

- A. SQL Management Studio
- B. Monitoring Database



- C. EV Storage Verification and Reporting
- D. EV Database Upgrader

**Correct Answer:** D

**QUESTION 31**

Which mandatory section required within the Enterprise Vault Policy Manager (EVPM) initialization file must always be at the top of the file?

- A. [Folder]
- B. [Mailbox]
- C. [Archive]
- D. [Directory]

**Correct Answer:** A

**QUESTION 32**

Storage Expiry is enabled.

How can messages from a single mailbox archive be prevented from deletion?

- A. clear the "Delete expired items from this archive automatically" check box in the archive properties
- B. use the Tools > Disable Mailboxes option
- C. mark the "Lock this category" check box in the Retention Category properties and restart the storage server
- D. create and apply an EVPM initialization file with "NONDeletable=True" against the mailbox

**Correct Answer:** A

**QUESTION 33**

The 'Business' retention category has a retention period of one year. This retention category and the 'Default Exchange Mailbox policy' are applied to the All Users Provisioning Group.

What happens after the scheduled archiving task runs?

- A. "One year" will be assigned as the retention period for the archived items
- B. "Business" will be assigned as the retention category for the archived items
- C. "All Users" will be assigned as the Provisioning Group for the archived items
- D. "Default user" will be assigned as the Mailbox policy for the archived items

**Correct Answer:** B

**QUESTION 34**

A customer requires different retention categories for items in users' mailbox folders.

Which two options could an administrator use to assign different retention categories to items in the specified folders? (Select two.)

- A. Enterprise Vault Archive settings
- B. Exchange Mailbox policy
- C. Exchange Managed folders
- D. Enterprise Vault Policy Manager
- E. Enterprise Vault Desktop policy

**Correct Answer:** CD

**QUESTION 35**

An administrator has configured Exchange journal archiving and Exchange mailbox archiving in the same

To Read the [Whole Q&As](#), please purchase the [Complete Version](#) from [Our website](#).

# Trying our product !

- ★ **100%** Guaranteed Success
- ★ **100%** Money Back Guarantee
- ★ **365 Days** Free Update
- ★ **Instant Download** After Purchase
- ★ **24x7** Customer Support
- ★ Average **99.9%** Success Rate
- ★ More than **69,000** Satisfied Customers Worldwide
- ★ Multi-Platform capabilities - **Windows, Mac, Android, iPhone, iPod, iPad, Kindle**

## Need Help

Please provide as much detail as possible so we can best assist you.

To update a previously submitted ticket:



 <b>One Year Free Update</b> <p>Free update is available within One Year after your purchase. After One Year, you will get 50% discounts for updating. And we are proud to boast a 24/7 efficient Customer Support system via Email.</p>	 <b>Money Back Guarantee</b> <p>To ensure that you are spending on quality products, we provide 100% money back guarantee for 30 days from the date of purchase.</p>	 <b>Security &amp; Privacy</b> <p>We respect customer privacy. We use McAfee's security service to provide you with utmost security for your personal information &amp; peace of mind.</p>
---	---	--

[Guarantee & Policy](#) | [Privacy & Policy](#) | [Terms & Conditions](#)

Any charges made through this site will appear as Global Simulators Limited.

All trademarks are the property of their respective owners.

Copyright © 2004-2015, All Rights Reserved.