

**100%** Money Back  
**Guarantee**

**Vendor:** HP

**Exam Code:** HP0-S33

**Exam Name:** Advanced Integration and Management of  
HP Server Solutions

**Version:** Demo

### QUESTION 1

Which must be installed on the target server P2P migration?

- A. HP Insight Dynamics ProLiant
- B. HP Insight Control
- C. HP iLO Advanced for BladeSystem
- D. HP Insight Control server deployment

**Correct Answer: B**

**Explanation**

**Explanation/Reference:**

### QUESTION 2

Referring to the exhibit, which Smart Carrier innovation was introduced with the HP ProLiant server platform to help reduce/eliminate downtime as a result of the wrong hard drive being removed after a failure?



- A. When a drive fails, the backlight flashes blue to auto locate. The drive status goes to amber.
- B. When a drive fails, it turns amber. The remaining healthy drives are held in place with an automatic latch mechanism to present removal.
- C. When a drive fails, it is disabled and powered off. The remaining healthy drives illuminate the Do not LED.
- D. When a drive fails, it turns amber. The remaining healthy drives illuminate the Do Not remove LED.

**Correct Answer: D**

**Explanation**

**Explanation/Reference:**

Explanation:

<http://198.235.14.21/HP/images/stories/ProLiantServers/Q212/4aa39937enw.pdf> (Page 3, Resiliency, 4th bullet)

Reduce failures and downtime--HP Smart Drives deliver the best overall customer experience and improves uptime. Virtually eliminate inadvertent drive removal with an icon-based display and a "Do Not Remove" indicator during a drive failure. HP Predictive Spare Activation identifies and resolves failures before they occur and automatically moves data to a spare device.

### QUESTION 3

You instated Hyper-V on a BL460 G6. Which RBSU advanced setting should be changed?

- A. Hyperthreading
- B. Intel Virtualization technology
- C. hardware pre-fetcher
- D. option ROM loading sequence

**Correct Answer: C**  
**Explanation**

**Explanation/Reference:**

**QUESTION 4**

Which HP web-based tool can be used to configure a solution of servers, storage and networking along with services, allowing an export of the final solution?

- A. Sizing Tool for VMware vSphere
- B. Simplified Configuration Environment
- C. Sizer for Microsoft Hyper-V R2
- D. Enterprise Configurator Workbench

**Correct Answer: B**  
**Explanation**

**Explanation/Reference:**

Reference: <http://h22174.www2.hp.com/SimplifiedConfig/Index>

**QUESTION 5**

A customer needs a direct attached based storage for a BladeSystem and wants a solution that enables low cost zoned or shared storage.

Which type of HP external storage meets the customer requirements?

- A. Direct Connect SAS storage
- B. Infiniband
- C. Fibre Channel over Ethernet
- D. Serial Attached SCSI

**Correct Answer: A**  
**Explanation**

**Explanation/Reference:**

Explanation:

[http://h18006.www1.hp.com/products/storageworks/sas\\_solution/index.html](http://h18006.www1.hp.com/products/storageworks/sas_solution/index.html) (Overview, first para)  
With the direct connect SAS storage for HP BladeSystem, HP extends and redefines direct- attached storage for BladeSystem servers. Now you can build local server storage on the fly with zoned storage, or enable low cost shared storage within the rack

**QUESTION 6**

Which HP tool assists in estimating power consumption selection, including power supplies, at a system, rack, and multi-rack levels?

- A. UPS Sizing Tool
- B. Insight Control Manager
- C. Power Advisor
- D. Power Protector

**Correct Answer: C**  
**Explanation**

**Explanation/Reference:**

Explanation:

<http://h18004.www1.hp.com/products/solutions/power/index.html> (first para) The HP Power Advisor is a tool provided by Hewlett-Packard to assist in the estimation of power consumption and proper selection of components including power supplies at a system, rack, and multi-rack level.

### QUESTION 7

A customer chose HP ProLiant for a VMware project that involves providing high availability for old and non-cluster aware application. The customer asks how to best protect against physical hardware failure in the VMware environment.

Which HP component provides the ability to v-Motion VMs to another physical server if a hardware-based pre-failure event occurs?

- A. Insight Foundation with vSphere integration
- B. Insight Control Virtualization Management
- C. OpenView Operations 5 for VMware
- D. Indight Control for VMware

**Correct Answer: B**

#### Explanation

#### Explanation/Reference:

Explanation:

[http://h18004.www1.hp.com/products/quickspecs/12631\\_div/12631\\_div.HTML](http://h18004.www1.hp.com/products/quickspecs/12631_div/12631_div.HTML)

Insight Control enables you to get the most out of a unified physical and virtual server infrastructure. Insight Control offers an out-of-the-box solution that can receive a predictive failure alert and automatically evacuate all VMs from a VMware ESX host server by initiating VMware DRS. VMware ESXi 5 environments also support lockdown/non-lockdown modes, autoboot, and stateless/stateful modes. Lockdown mode provides for increased security of ESXi hosts.

Flexible move capabilities allow multiple usage scenarios. In high-availability situations that do not allow service interruptions, Live Move (initiate VMware vMotion technology from Insight Control

### QUESTION 8

An external storage device is connected to HP ProLiant Gen8 servers VMware 5.0i. You want to create a shared datastore for all the servers. After creating a LUN on a storage device, what is the correct procedure to do this?

- A. Present the LUN to one ESXi server, using the storage configuration tool, create a VMFS datastore and enable Round Robin or MRU policy for that datastore.
- B. Present the LUN to the server running VCenter, create a datastore and present it to the ESXi servers.
- C. Present the LUN to all servers and format it with the VMFS file system from any of them, the remaining servers will recognize the newly created datastore.
- D. Present the LUN to one of the servers and create a datastore; enable access for the remaining servers.

**Correct Answer: C**

#### Explanation

#### Explanation/Reference:

### QUESTION 9

A customer Installed Insight server deployment on a server that also hosts the DHCP server. Which option is required on the DHCP server for HP Insight Control server deployment to register PXE clients?

- A. Option 5 name Server
- B. Option 15 Domain Name
- C. Option 50 Address Request
- D. Option 60 Class ID

**Correct Answer: D**

#### Explanation

**Explanation/Reference:**

Reference: <http://h20000.www2.hp.com/bizsupport/TechSupport/Document.jsp?lang=en&cc=us&taskId=110&prodSeriesId=332359&prodTypeId=18964&objectID=c03310264>

**QUESTION 10**

Which HP solution delivers secure monitoring diagnosis, and problem resolution at no charge HP support?

- A. 10 Proactive Carepacks credits
- B. Collaborative Support for third-party troubleshooting
- C. Insight Remote Support
- D. iLO Advanced pack

**Correct Answer: C**

**Explanation****Explanation/Reference:**

Reference: [http://blogs.technet.com/b/storageserver/archive/2013/02/26/hp-storeeasy-storage-\(see-HP-Insight-remote-support\)-appliances-and-gateways.aspx](http://blogs.technet.com/b/storageserver/archive/2013/02/26/hp-storeeasy-storage-(see-HP-Insight-remote-support)-appliances-and-gateways.aspx)

**QUESTION 11**

You want to create a boot option on an HP BL890c i2 Blade Server. From which option in the UEFI Boot Menu should be performed?

- A. M/m Launch Boot Maintenance Manager
- B. D/d Launch Device manager
- C. S/s Launch UEFI Shell
- D. I/I Launch iLO Setup Tool
- E. B/b Launch Box Manager

**Correct Answer: C**

**Explanation****Explanation/Reference:**

Explanation:  
<http://h20000.www2.hp.com/bizsupport/TechSupport/Document.jsp?objectID=c02822269&lang=en&cc=us&taskId=&prodSeriesId=4186437>

**QUESTION 12**

When developing an implementation Plan, what does the acceptance criteria establish?

- A. Exit criteria for transacting the system into production
- B. Minimum level of performance required for plan continuation
- C. Authorization to continue toward funding of the project
- D. Authorization to start or implement the project plan

**Correct Answer: C**

**Explanation****Explanation/Reference:****QUESTION 13**

Which HP Smart Array Controller is required when using 3 GB SAS switches to connect to external storage MDS600?

- A. P410
- B. P410i
- C. P700M

D. P712M

**Correct Answer:** C

**Explanation**

**Explanation/Reference:**

Reference: [http://h18000.www1.hp.com/products/quickspecs/13170\\_na/13170\\_na.PDF](http://h18000.www1.hp.com/products/quickspecs/13170_na/13170_na.PDF) (page 1, first para)

**QUESTION 14**

Which HP software delivers active health and performance monitoring?

- A. Insight Dynamics
- B. Insight Remote Support
- C. Insight Control
- D. Insight Rapid Deployment

**Correct Answer:** C

**Explanation**

**Explanation/Reference:**

Explanation:

<http://h18004.www1.hp.com/products/servers/management/ice/index.html>

Monitor Infrastructure Health and Performance Continuously -Monitor system health and performance through HP SIM, including "phone home" and warranty and service contract reporting functions  
-Quickly pinpoint and resolve bottlenecks with processors, memory, NICs, PCI buses to tune your existing server infrastructure for maximum performance -Compare actual performance with the known capabilities of each component, and determine in real time which components are experiencing performance issues

**QUESTION 15**

Which HP software offering enables IT organization to provision infrastructure consistently and automatically from pools of shared resources, using a self-service portal?

- A. Insight Control Server Deployment
- B. Systems Insight Manager
- C. Operations Orchestrations
- D. Matrix OE infrastructure Orchestration

**Correct Answer:** D

**Explanation**

**Explanation/Reference:**

Explanation:

<http://h20000.www2.hp.com/bc/docs/support/SupportManual/c03482833/c03482833.pdf> (page 4, enabling technologies for HP cloud maps)

Enabling technologies for HP Cloud Maps

HP Matrix Operating Environment (OE) is cloud management software for IaaS that enables you to design and provision infrastructure services in minutes via a self-service portal, optimize infrastructure for capacity planning, and protect service continuity with automated, cost-effective failover. Matrix OE is fully integrated into HP CloudSystem, providing the ability to deliver IaaS. A core component of HP Matrix OE is infrastructure orchestration (IO). It allows you to use a self-service portal to provision infrastructure consistently and automatically from pools of shared resources. With the Matrix OE IO designer interface, you can easily import, create, or customize these infrastructure templates using a drag-and-drop editor. Figure 1 shows the infrastructure orchestration designer interface for managing templates. Once a template is complete, you can publish it to the self-service portal and export it in XML format to share. You can also assign costs per component to use for reports or showback/chargeback

**QUESTION 16**

What is one of the new features of HP ProLiant Gen8 servers?

- A. Virtual connect
- B. FlexPod adapters
- C. Smart Storage
- D. SmartStart

**Correct Answer: C**

**Explanation**

**Explanation/Reference:**

**QUESTION 17**

Which HP P4000 feature enables volume replication to the remote site using WAN link?

- A. CMC WAN Replication
- B. SAN/iQ Remote Copy
- C. SAN/iQ SmartClone
- D. P4000 Command View

**Correct Answer: B**

**Explanation**

**Explanation/Reference:**

**QUESTION 18**

A customer has an HP 10642 G2 Rack with Multiple DL2000 servers. The power connection to the rack is by two full length 7.36 kVA 32A single phase international PDUs with SNMP management module installed. As shown in the exhibit, the DL 170e servers in the DL2000 chassis are being blocked in by the PDU.

What can be done to allow the DL 170e to be removed for servicing?



- A. Replace the Existing PDUs with full length, 11kVA 16A 3Phase PDUs.
- B. Replace the existing PDUs with a modular PDU solution.
- C. Replace the existing PDUs with an iPDU Solution.
- D. Mount the existing PDUs upside and feed the power from the top of the rack.

**Correct Answer: C**

**Explanation**

**Explanation/Reference:**

**QUESTION 19**

You are designing a new multi-site data center. A key requirement for storage is to start with a small solution and include the ability to increase capacity and performance as needed. Which storage solution has the opportunity to start with 2 nodes, scaling up to 32 nodes as a single solution?

- A. HP 3PAR T800/P10000
- B. HP P2000
- C. HP P6000 EVA
- D. HP P4000

**Correct Answer: D**

**Explanation**

**Explanation/Reference:**



**QUESTION 20**

A consultant must provide a UPS solution to support the load requirement of a server solution being delivered. What is the recommended tool to use to provide the correct UPS solution?

- A. HP Rack and Power Sizer (upssizer.com)
- B. HP Value UPS Manager
- C. HP Rack and Power manager
- D. HP Power Advisor

**Correct Answer:** A

**Explanation****Explanation/Reference:**

Reference: <http://h18004.www1.hp.com/products/solutions/power/index.html>

**QUESTION 21**

How many server connect into a 4U HP ProLiant S6500 chassis?

- A. 4 x HP ProLiant SL 165s G7
- B. 4 x HP BL860c i2
- C. 4 x BL460 G7
- D. 8 x HP ProLiant SL165s G7

**Correct Answer:** A

**Explanation****Explanation/Reference:**

Reference:

<http://www.pccconnection.com/IPA/PM/Brands/AMD/Servers/~~/media/F787C33A144D4E0DA804D2092>  
(page 4, HP proliant sl165s G7, first bullet)  
A6E735E.pdf?v=2

HP ProLiant SL165s G7

The HP ProLiant SL165s G7 server is part of the HP ProLiant SL6500 family, optimized for scale-out customers and designed to greatly reduce costs, maximize power efficiency (by sharing power supplies and fans), and maintain total flexibility. The HP ProLiant SL165s G7 is optimized for applications needing large amounts of memory and I/O expansion such as scale-out, Web 2.0, and high-performance computing (HPC) environments. · Form factor: 2P, 1U full-width tray node. Four independent HP ProLiant SL165s G7 servers go into the 4U HP ProLiant s6500 chassis

**QUESTION 22**

A customer wants the latest Ultrium technology solution integrated into the company's BladeSystem c-Class enclosures. What is the correct tape solution?

- A. HP StorageWorks SB3000c
- B. HP StorageWorks SB920c
- C. HP StorageWorks Ultrium 1840b
- D. HP StorageWorks Ultrium 960c

**Correct Answer:** A

**Explanation****Explanation/Reference:**

Explanation:

[http://h18000.www1.hp.com/products/quickspecs/12729\\_na/12729\\_na.pdf](http://h18000.www1.hp.com/products/quickspecs/12729_na/12729_na.pdf)

**QUESTION 23**

What can you configure with the BladeSystem Insight Display on a c7000 enclosure? (Select three)

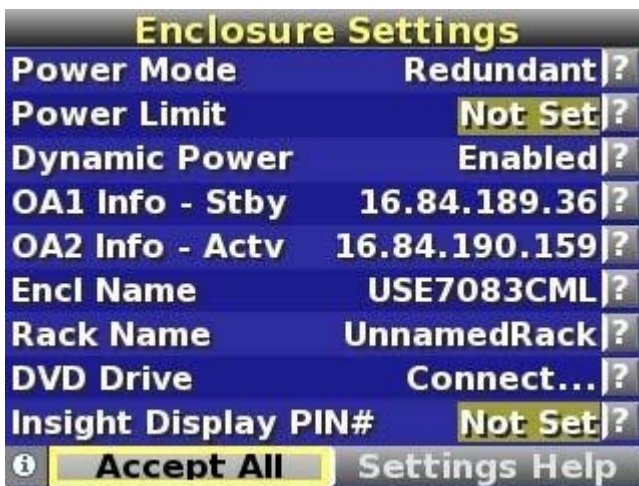
- A. Rack name
- B. Power mode
- C. Number of fans installed
- D. OA1 IP address
- E. Blade name
- F. Midplane serial number

**Correct Answer:** ABD

**Explanation**

**Explanation/Reference:**

Reference: <http://h20000.www2.hp.com/bc/docs/support/SupportManual/c00698534/c00698534.pdf> (page 13)



**QUESTION 24**

Which Advanced Memory Protection configuration allows a system to survive the complete of two DRAM devices?

- A. Lockstep mode with RDIMMs
- B. Online Spare Memory mode
- C. Lockstep mode with UDIMMs
- D. Advanced ECC mode with UDIMMs

**Correct Answer:** A

**Explanation**

**Explanation/Reference:**

Explanation:

[http://h20000.www2.hp.com/bizsupport/TechSupport/Document.jsp?lang=es&cc=lamerica\\_nsc\\_cnt\\_amer&taskId=115&prodSeriesId=5177937&prodTypeId=15351&objectID=c03250296](http://h20000.www2.hp.com/bizsupport/TechSupport/Document.jsp?lang=es&cc=lamerica_nsc_cnt_amer&taskId=115&prodSeriesId=5177937&prodTypeId=15351&objectID=c03250296)

The server also can operate in independent channel mode or combined channel mode (lockstep). When running in lockstep mode, user gains reliability in one of two ways:

If running with UDIMMs (built with x8 DRAM devices), the system can survive a complete DRAM failure (SDDC). In independent channel mode, this failure would be an uncorrectable error.

If running with RDIMM (built with x4 DRAM devices), the system can survive the complete failure of two DRAM devices (DDDC). Running in independent mode, the server can only survive the complete failure of a Single DRAM Device (SDDC).

**QUESTION 25**

Which RBSU setting should be changed for low latency and maximum performance?

- A. Configure for no C-states
- B. Enable turbo-boost
- C. Enable iLO performance monitoring
- D. Disable power regulator

**Correct Answer:** A

**Explanation**

**Explanation/Reference:**

#### **QUESTION 26**

You configured disk thresholds for all servers running Windows Server 2008 R2. You want HP SIM to react by running a script that will delete all IE temporary files on the server that reports problems with the available capacity on the drive.

What do you have to configure from the HP SIM level to achieve this?

- A. Configure the Single Sign On feature for all the servers that should be covered that script.
- B. Establish a trust relationship between HP SIM and all servers covered by that script, and apply the Insight Control licenses.
- C. Create a custom command that will delete temporary files and configure an automatic event handling task to run this script when a specific event occurs.
- D. Import the HP SIM certificate to the HP System Management homepage for all of the servers that should be covered by that script and configure SNMP security to allow remote command execution.

**Correct Answer:** C

**Explanation**

**Explanation/Reference:**

#### **QUESTION 27**

Which HP tool allows you to generate a full report that can be sent to customer service for telephone support?

- A. IML
- B. ACU
- C. SIM
- D. ADU

**Correct Answer:** D

**Explanation**

**Explanation/Reference:**

Explanation:

<http://h20000.www2.hp.com/bc/docs/support/SupportManual/c00687518/c00687518.pdf> (page 16)

Array Diagnostics Utility

ADU is an in-depth diagnostic and reporting utility for all Smart Array controllers. The ADU quickly identifies problems such as incorrect versions of firmware, improperly installed drives, inappropriate error rates, and failed batteries on the array accelerator board. The ADU displays a detailed analysis of the system configuration. If the cause is not apparent, the ADU can generate a full report for administrators to fax or e-mail to HP customer service for phone support.

#### **QUESTION 28**

A customer complained of slow performance on an HP ProLiant server. You upgraded to faster processes and added memory to the server. What should you create after you change the server hardware configuration?

- A. New performance baseline
- B. Insight Diagnostics report
- C. CPU Stress report
- D. Memory Validation report

**Correct Answer: A**  
**Explanation**

**Explanation/Reference:**

**QUESTION 29**

A customer wants to clean up the HP SIM database , but must keep events from the last 180 days complying with regulations.

How can you delete events older than 180 days to keep the database clean and comply with regulations at the same time?

- A. Configure a custom command to use the database CLI to delete events older than 180 days.
- B. Create a collection to select events older than 180 days, and write a task to delete events on that collection.
- C. Change the retention policy in the database level to delete all entries older than 180 days.
- D. Configure an event retention policy to keep events from the last 180 days and delete the remaining events manually.

**Correct Answer: B**  
**Explanation**

**Explanation/Reference:**

Explanation:

For every system that is discovered in HP SIM, an event is created that cannot be deleted (the Discovered System event) until the system is deleted. If you are managing 1,500 systems, this means that 1,500 events are automatically generated before any SNMP traps are received. These Discovered System events can be cleared so that they can be easily filtered out. This can be performed automatically by creating a collection to filter all events older than X days, then creating a task to delete events from that collection.

[http://h20566.www2.hp.com/portal/site/hpsc/template.BINARYPORTLET/public/kb/docDisplay/resource.process/?spf\\_p.tpst=kbDocDisplay\\_ws\\_BI&spf\\_p.rid\\_kbDocDisplay=docDisplayResURL&javax.portlet.begCacheTok=com.vignette.cachetoken&spf\\_p.rst\\_kbDocDisplay=wsrp-resourceState%3DdocId%253Demr\\_nac01650324-4%257CdocLocale%253Den\\_US&javax.portlet.endCacheTok=com.vignette.cachetoken](http://h20566.www2.hp.com/portal/site/hpsc/template.BINARYPORTLET/public/kb/docDisplay/resource.process/?spf_p.tpst=kbDocDisplay_ws_BI&spf_p.rid_kbDocDisplay=docDisplayResURL&javax.portlet.begCacheTok=com.vignette.cachetoken&spf_p.rst_kbDocDisplay=wsrp-resourceState%3DdocId%253Demr_nac01650324-4%257CdocLocale%253Den_US&javax.portlet.endCacheTok=com.vignette.cachetoken) (page 9 and 10)

**QUESTION 30**

You are upgrading the iLO 4 firmware and the flash fails. What is the next step?

- A. Retry the flash before rebooting the server or iLO.
- B. <CTL><Alt><Del> to reboot so that you can revert to the original version.
- C. Pull the power cord to abort upgrade and revert to the original version.
- D. Reboot the server and re-enter the iLO update to force the update.

**Correct Answer: A**  
**Explanation**

**Explanation/Reference:**

Explanation:

If this error occurs, click the Clear Error button to reset the flash process, and then try the firmware update again with the correct firmware file. If you do not clear the error, the same error might occur even when you

use the correct firmware file.

**QUESTION 31**

On a Microsoft Windows Server, the performance counter Processor % Processor time can indicate an overload situation.

At which percentage is it determined?

- A. 70%
- B. 75%
- C. 80%
- D. 85%

**Correct Answer: D**

**Explanation**

**Explanation/Reference:**

Explanation:

<http://msdn.microsoft.com/en-us/library/ms178072.aspx> An efficient way to determine CPU usage is to use the counter in System Monitor. This counter monitors the amount of time the CPU spends executing a thread that is not idle. A consistent state of 80 percent to 90 percent may indicate the need to upgrade your CPU or add more processors.

**QUESTION 32**

You want to create a service template using I/O Designer that will be deployed to the Hyper-V host. Currently, only VMware templates have been used in this environment. How must you prepare a virtual machine template to use for this template?

- A. Use the Insight Control Server migration functionality to migrate the VM from VMware to Hyper-V and then use the vCenter server to prepare the template recognized by I/O.
- B. You can use VMware templates for Hyper-V deployment since I/O is virtualization layer independent.
- C. Use the I/O converter tool to convert the VMware template to change it to the correct format.
- D. Create a virtual machine template using Insight Control virtual machine management functionality.

**Correct Answer: D**

**Explanation**

**Explanation/Reference:**

**QUESTION 33**

You installed the WBEM Providers on several ProLiant servers running Windows Server 2008 R2. Where can you change the data source from SNMP to WBEM?

- A. HP System Management Homepage
- B. System Management snapin in Server Manager
- C. HP Management Agents applet on the control panel
- D. Agent Configuration file

**Correct Answer: A**

**Explanation**

**Explanation/Reference:**

Reference: <http://www.tricksyguide.com/change-data-source-in-hp-system-management-homepage.html>

**QUESTION 34**

Which virtual infrastructure component is used as a backup communication channel to exchange information between vSphere HA agents?

- A. VMkernel

- B. Distributed switch port group
- C. Datastore
- D. Service

**Correct Answer: C**

**Explanation**

**Explanation/Reference:**

### QUESTION 35

Which features are activated by the Smart Array Advance Pack (SAAP)? (Select two)

- A. Online spare configuration
- B. User selectable-strip sizes
- C. Zero Memory configurations
- D. Mirror splitting
- E. RAID 6 and RAID 60

**Correct Answer: DE**

**Explanation**

**Explanation/Reference:**

Reference: [http://h20000.www2.hp.com/bizsupport/TechSupport/Document.jsp?](http://h20000.www2.hp.com/bizsupport/TechSupport/Document.jsp?lang=en&cc=us&taskId=115&prodSeriesId=428936&prodTypeId=15351&objectID=c02793166) (See lang=en&cc=us&taskId=115&prodSeriesId=428936&prodTypeId=15351&objectID=c02793166 the bulleted point at the end of the page)

When activated with a registered license key, SAAP provides the following features:

RAID 6 (ADG).

RAID 60.

Advanced Capacity Expansion.

Mirror splitting and recombining in offline mode.

Drive Erase.

Performance optimization for video on demand.

### QUESTION 36

You want to add a new network to the existing VC domain managed through VCEM. When you try to access VCM, you get a message that the VC domain configuration is not available from the VCM module and should be performed from the VCEM level. You cannot locate an option in VCEM to add/modify vNet settings.

What should you do?

- A. Put the domain into the maintenance mode using the VCEM and modify the configuration using VCM.
- B. Log into HP SIM using the account with the CMS full configuration rights and modify the VC settings using VCEM.
- C. Use the RBCL scripts and VC CLI to add/modify vNet.
- D. Use the Virtual Connect Support Utility to modify domain settings.

**Correct Answer: B**

**Explanation**

**Explanation/Reference:**

### QUESTION 37

A user tries to request a service using the I/O Self-Service Portal, but is unable to select a destination for the service deployment.

What should be verified first?

- A. Has this user been added to the IO\_Users group?

- B. Is the I/O Configuration toolbox assigned to this user's account in HP SIM?
- C. Has the template selected by the user been validated and published?
- D. Does this user have access to any server pool?

**Correct Answer:** D

**Explanation**

**Explanation/Reference:**

Explanation:

Organization users have the same capabilities as service provider users except that they are restricted in the resources that they can use. Only published templates and networks that have been assigned to the organization can be used, and a compute resource must be in a pool that has been assigned to the user by the organization administrator.

**QUESTION 38**

To help diagnose issues, which new HP ProLiant Gen8 server feature ensures that Support knows that has changed in a server?

- A. Agentless Management Service
- B. Complex Programmable Logic Device
- C. Integrated Active Health System
- D. Associated Targets Detections

**Correct Answer:** C

**Explanation**

**Explanation/Reference:**

Explanation:

HP Active Health System, an industry-first technology, continuously monitors over 1,600 system parameters. All configuration changes are logged and can be sent to HP for more accurate problem resolution.

**QUESTION 39**

Which HP Troubleshooting Methodology should be used to resolve server bottlenecks?

- A. Three-Step Troubleshooting Methodology
- B. Four-Step Troubleshooting Methodology
- C. Five-Step Troubleshooting Methodology
- D. Six-Step Troubleshooting Methodology

**Correct Answer:** D

**Explanation**

**Explanation/Reference:**

Reference: <http://hpata.ccilearning.com/LinkClick.aspx?fileticket=9YhkoX7lxyE> (page 4, see bullet # 6 in the table)

%3D&tabid=1373&language=en-US

Troubleshoot common server and storage issues using the HP 6-step troubleshooting methodology:

- Collect data
- Evaluate data in order to determine potential subsystems causing the issue
- Develop an optimized action plan
- Execute the plan
- Test if problem is solved
- Implement preventive measures

To Read the [Whole Q&As](#), please purchase the [Complete Version](#) from [Our website](#).

# Trying our product !

- ★ **100%** Guaranteed Success
- ★ **100%** Money Back Guarantee
- ★ **365 Days** Free Update
- ★ **Instant Download** After Purchase
- ★ **24x7** Customer Support
- ★ Average **99.9%** Success Rate
- ★ More than **69,000** Satisfied Customers Worldwide
- ★ Multi-Platform capabilities - **Windows, Mac, Android, iPhone, iPod, iPad, Kindle**

## Need Help

Please provide as much detail as possible so we can best assist you.

To update a previously submitted ticket:



 <b>One Year Free Update</b> <p>Free update is available within One Year after your purchase. After One Year, you will get 50% discounts for updating. And we are proud to boast a 24/7 efficient Customer Support system via Email.</p>	 <b>Money Back Guarantee</b> <p>To ensure that you are spending on quality products, we provide 100% money back guarantee for 30 days from the date of purchase.</p>	 <b>Security &amp; Privacy</b> <p>We respect customer privacy. We use McAfee's security service to provide you with utmost security for your personal information &amp; peace of mind.</p>
---	---	--

[Guarantee & Policy](#) | [Privacy & Policy](#) | [Terms & Conditions](#)

Any charges made through this site will appear as Global Simulators Limited.

All trademarks are the property of their respective owners.

Copyright © 2004-2015, All Rights Reserved.