

**100%** Money Back  
**Guarantee**

**Vendor:** Huawei

**Exam Code:** HC-224

**Exam Name:** Huawei Certified Datacom Professional -  
Fast Certification - ENU

**Version:** Demo

**Topic 1, Volume A**

**QUESTION NO: 1**

On the MSTP network as shown in the figure, what is the role of the switch in MSTI 1 according to the configuration?

- A. Root switch
- B. Slave switch
- C. Non-root switch
- D. None of the above

**Answer: A**

**Explanation:**

**QUESTION NO: 2**

As shown in the figure, which switch is the root switch according to the configuration?

- A. SWA
- B. SWB
- C. SWC
- D. None of the above

**Answer: A**

**Explanation:**

**QUESTION NO: 3**

If an MSTP switch detects that the neighboring switch works in RSTP mode, which mode does the MSTP switch work?

- A. STP mode
- B. RSTP mode
- C. MSTP mode
- D. All of the above

**Answer: B**

**Explanation:**

**QUESTION NO: 4**

Which problems on a single spanning tree network can be solved by MSTP? (Select 3 Answers)

- A. Traffic forwarding paths in some VLANs are faulty.
- B. Traffic cannot be load balanced.
- C. The second best path problem may occur.
- D. The network reliability cannot be improved.

**Answer: A,B,C**

**Explanation:**

**QUESTION NO: 5**

According to the figure, what is the status of Ethernet1/0/13 in MSTI 1?

- A. Forwarding
- B. Discarding
- C. Learning
- D. None of the above

**Answer: B**

**Explanation:**

**QUESTION NO: 6**

In RSTP, which statements about the alternate port and backup port are true? (Select 2 Answers)

- A. The alternate port is a backup of the root port.
- B. The backup port is a backup of the designated port.
- C. The switch that the backup port belongs to is not the designated switch on the network segment connected to the interface.
- D. The switch that the alternate port belongs to is the designated switch on the network segment connected to the interface.

**Answer: A,B**

**Explanation:**

**QUESTION NO: 7**

According to the MSTP protocol, each MST instance calculates an independent spanning tree by using the RSTP algorithm.

- A. True
- B. False

**Answer: A**

**Explanation:**

**QUESTION NO: 8**

The following is the command output on a root switch of an MSTP region. How many switches are located in the MSTP region? ( )

- A. Less than 10
- B. Less than 20
- C. Less than 30
- D. Less than 40

**Answer: C**

**Explanation:**

**QUESTION NO: 9**

On the RSTP network with STP devices, which packets does an RSTP switch use to notify the STP switches of the topology change?

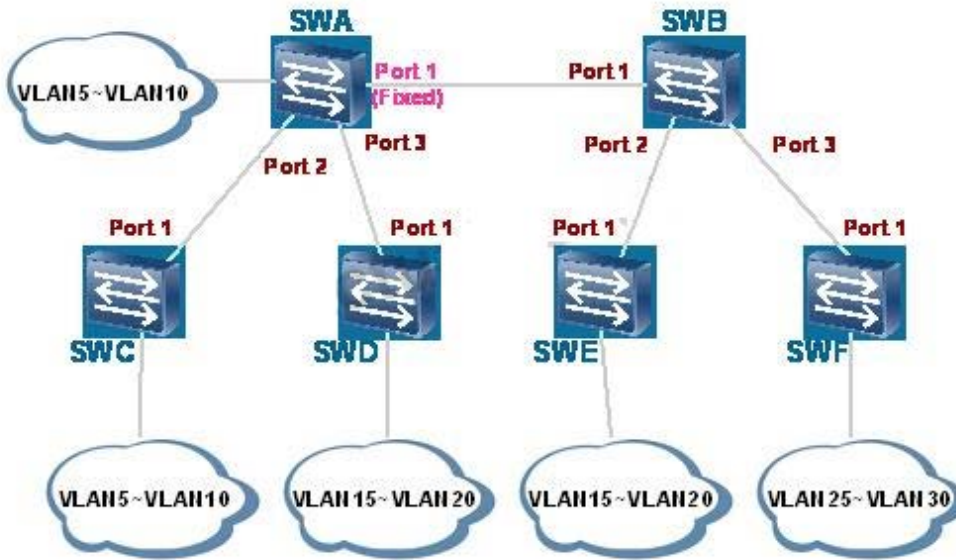
- A. RSTP BPDUs with the TC flag
- B. STP BPDUs with the TCN flag
- C. RSTP BPDUs with the TCA flag
- D. STP BPDUs with the TCA flag

**Answer: B**

**Explanation:**

**QUESTION NO: 10**

What are the same fields in RSTP BPDUs and STP BPDUs? (Select 2 Answers)



- A. TCN
- B. TC
- C. TCA
- D. All of the above

**Answer: B,C**

**Explanation:**

**QUESTION NO: 11**

On the RSTP network as shown in the figure, what RSTP operations will occur after the E1 port of SWB fails? (Select 3 Answers)

- A. SWB deletes the MAC address entries with the E1 port as the destination interface.
- B. The spanning tree is recalculated and the E2 port is elected as the new root port.
- C. All the interfaces in forwarding state send topology change notifications (TCNs) to notify other switches of the topology change.
- D. All the non-edge ports in forwarding state send TCNs to notify other switches of the topology change.

**Answer: A,B,D**

**Explanation:**

**QUESTION NO: 12**

Which is the port state defined in RSTP?

- A. Discarding
- B. Learning
- C. Forwarding
- D. All of the above

**Answer: D**

**Explanation:**

**QUESTION NO: 13**

RSTP has all functions that STP has and it is backward compatible with STP.

- A. True
- B. False

**Answer: A**

**Explanation:**

**QUESTION NO: 14**

RSTP adopts fast convergence mechanism. So, there is no Forward Delay interval in RSTP.

- A. True
- B. False

**Answer: B**

**Explanation:**

**QUESTION NO: 15**

Two switches are directly connected to each other and they are working in full duplex mode. By default, RSTP will consider the link between the switches as point-to-point link.

- A. True
- B. False

**Answer: A**

**Explanation:**

**QUESTION NO: 16**

In RSTP network environment, a port can be set as edge port when it is directly connected with terminal.

- A. True
- B. False

**Answer: A**

**Explanation:**

**QUESTION NO: 17**

Which of the following statements about RSTP and STP is true?

- A. STP has more port states than RSTP.
- B. The port roles used in RSTP is less than the port roles used in STP.
- C. Since RSTP adopts fast convergence mechanism, it does not have Learning state which is available in STP.
- D. Same as STP, the ports will enter into Listening state once the RSTP has been enabled. Then, the ports can receive BPDU and calculate the spanning tree.

**Answer: A**

**Explanation:**

**QUESTION NO: 18**

In a switching network that runs RSTP, the topology change notification message will not be sent when the switch detects that the Alternate Port is failed.

- A. True
- B. False

**Answer: A**

**Explanation:**

**QUESTION NO: 19**

When the topology of a network running RSTP changes, what happens after the change?

- A. Flooding on the entire network.
- B. The aging time of MAC address entries is changed.
- C. Some MAC address entries are deleted.
- D. All of the above

**Answer: C**

**Explanation:**

**QUESTION NO: 20**

Which ports defined by RSTP cannot work in Forwarding state? (Select 2 Answers)

- A. Root Port
- B. Designated Port
- C. Backup Port
- D. Alternate Port

**Answer: C,D**

**Explanation:**

**QUESTION NO: 21**

On an RSTP network, when an edge port is in protected state, what operation is performed after the edge port receives BPDUs?

- A. The edge port forwards BPDUs.
- B. The edge port discards BPDUs.
- C. The edge port is shut down.
- D. The edge port obtains required information from BPDUs.

**Answer: C**



**Explanation:**

**QUESTION NO: 22**

In RSTP, the port status can be discarding and learning. Which statements about the port status are true? (Select 2 Answers)

- A. The port in discarding or learning state does not forward data frames.
- B. The port in discarding state does not learn MAC addresses.
- C. The port in learning state does not learn MAC addresses.
- D. All of the above

**Answer: A,B**

**Explanation:**

**QUESTION NO: 23**

On the RSTP network as shown in the figure, what is the port role of SWC E0/1 according to the configuration? (Select 2 Answers)

- A. Designated port
- B. Root port
- C. Alternate port
- D. Edge port

**Answer: A,D**

**Explanation:**

**QUESTION NO: 24**

As shown in the figure, when the link between SWC and LAND is faulty, through which path are TCA BPDUs sent?

- A. From SWA to SWB
- B. From SWB to SWC
- C. From SWB to SWA
- D. From SWC to SWB

**Answer: B**

**Explanation:**

**QUESTION NO: 25**

As shown in the figure, when the STP network runs properly, which device does the designated port of LANC reside ( )

- A. SWA
- B. SWB
- C. SWC
- D. None of the above

**Answer: B**

**Explanation:**

**QUESTION NO: 26**

In STP configuration, which statement about BPDUs is true?

- A. BPDUs cannot be sent from the designated port.
- B. BPDUs can be sent only from the designated port.
- C. BPDUs can be sent from any port.
- D. None of the above.

**Answer: B**

**Explanation:**

**QUESTION NO: 27**

On an STP network, after the network topology changes, which BPDUs are sent during flooding of topology change information on the entire network?

- A. BPDUs with the TCN flag
- B. BPDUs with the TCA flag
- C. BPDUs with the TC flag
- D. All of the above

**Answer: D**

**Explanation:**

**QUESTION NO: 28**

After an STP switch starts, it considers itself as the root switch. Which statements about BPDU parameter setting are true? (Select 3 Answers)

- A. The switch is the designated root.
- B. The designated cost is 0.
- C. The switch is the designated bridge.
- D. The designated port is 0.

**Answer: A,B,C**

**Explanation:**

**QUESTION NO: 29**

On the STP network as shown in the figure, which device may be the blocked port belong to ?

- A. SWA
- B. SWB
- C. SWC
- D. None of the above

**Answer: C**

**Explanation:**

**QUESTION NO: 30**

QinQ provides a simplified Layer 2 VPN tunnel.

- A. True
- B. False

**Answer: A**

**Explanation:**

**QUESTION NO: 31**

Which statements about QinQ are true? (Select 2 Answers)

- A. QinQ saves VLANs on the public network.
- B. To avoid VLAN conflict, the customer must negotiate with the service provider before modifying the VLANs on its private network.
- C. When the service provider upgrades the network, the configurations on the user network do not need to be modified.
- D. All of the above

**Answer: A,C**

**Explanation:**

**QUESTION NO: 32**

Some vendors set the TPID value in the outer VLAN tag of QinQ packets to the non-protocol value. To be compatible with these vendors' devices, the TPID value on Huawei switches is adjustable. Which is the default value of the TPID value on Huawei switches?

- A. 0x9200
- B. 0x9100
- C. 0x8200
- D. 0x8100

**Answer: D**

**Explanation:**

**QUESTION NO: 33**

Which types of interfaces can be configured with selective QinQ? (Select 2 Answers)

- A. Access interface
- B. Trunk interface
- C. Hybrid interface
- D. dot1q-tunnel interface

**Answer: B,C**

**Explanation:**

**QUESTION NO: 34**

The STP protocol can prevent broadcast storms caused by loops on the Layer 2 network.

- A. True
- B. False

**Answer: A**

**Explanation:**

**QUESTION NO: 35**

The STP protocol cannot prevent MAC address table flapping caused by loops on the Layer 2 network.

- A. True
- B. False

**Answer: B**

**Explanation:**

**QUESTION NO: 36**

Which are the port roles defined in STP?

- A. Root Port
- B. Designated Port
- C. Alternate Port
- D. All of the above

**Answer: D**

**Explanation:**

**QUESTION NO: 37**

How many port states are defined by STP?

- A. 3
- B. 4
- C. 5
- D. 6

**Answer: C**

**Explanation:**

**QUESTION NO: 38**

Each STP switch has a unique switch ID. Which two entries does the switch ID contain?

- A. Two-byte switch priority
- B. Six-byte MAC address
- C. Two-byte switch priority and six-byte MAC address
- D. Six-byte switch priority and six-byte MAC address

**Answer: C**

**Explanation:**

**QUESTION NO: 39**

On an STP network, before the interface status transits from non-forwarding to forwarding, how many Forward Delay intervals does the interface wait for?

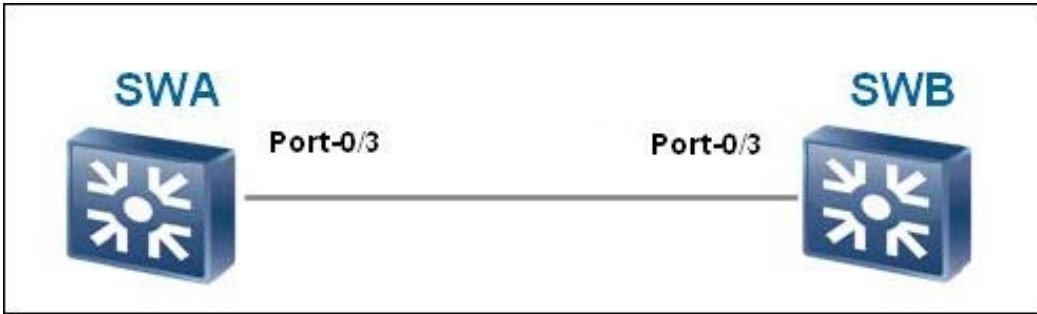
- A. 2
- B. 3
- C. 4
- D. 5

**Answer: A**

**Explanation:**

**QUESTION NO: 40**

If loop exists and STP is not enabled, the switch will not operate normally.



- A. True
- B. False

**Answer: A**

**Explanation:**

#### QUESTION NO: 41

Which of the following statements about STP Designated Port is true?

- A. Each of the bridge can have one Designated Port only.
- B. Designated Port is responsible for forwarding packets to its connected network segments.
- C. The only path leading to the Root Bridge is through Designated Port.
- D. Designated Port forwards the data packet from its corresponding switch to the Root Switch.

**Answer: B**

**Explanation:**

#### QUESTION NO: 42

Which of the following statements about STP Designated Port is true?

- A. Each of the bridge can have one Designated Port only.
- B. Designated Port is responsible for forwarding packets to its connected network segments.
- C. The only path leading to the Root Bridge is through Designated Port.
- D. Designated Port forwards the data packet from its corresponding switch to the Root Switch.

**Answer: B**

**Explanation:**

**QUESTION NO: 43**

Which of the following statements is not the advantage of STP?

- A. STP can manage the redundant links. When the working link is down, network connectivity can be restored.
- B. STP can prevent loops
- C. STP can prevent broadcast storm
- D. STP can save network bandwidth

**Answer: D**

**Explanation:**

**QUESTION NO: 44**

Which of the following standards defines STP?

- A. 802.1J
- B. 802.1X
- C. 802.1D
- D. 802.1P

**Answer: C**

**Explanation:**

**QUESTION NO: 45**

STP elects ( )

- A. One bridge as the Root Bridge and another one as the Backup Root Bridge
- B. One bridge as the Root Bridge
- C. Two bridges as the Root Bridge
- D. One Designated Bridge

**Answer: B**

**Explanation:**



**QUESTION NO: 46**

STP distributes configuration message by sending BPDU packet to each other.

- A. True
- B. False

**Answer: A**

**Explanation:**

**QUESTION NO: 47**

In STP, BPDU packet is carried by ( ).

- A. IP packet
- B. TCP packet
- C. Ethernet frame
- D. UDP packet

**Answer: C**

**Explanation:**

**QUESTION NO: 48**

In a switching network that has been enabled with STP protocol, the priorities of all the switches are the same. The MAC address of switch1 is 00-e0-fc-00-00-40, MAC address of switch2 is 00-e0-fc-00-00-10, MAC address of switch3 is 00-e0-fc-00-00-20, and MAC address of switch4 is 00-e0-fc-00-00-80. Which of the switches will be elected as the Root Bridge?

- A. Switch1
- B. Switch2
- C. Switch3
- D. Switch4

**Answer: B**

**Explanation:**

**QUESTION NO: 49**

A switching network has been enabled with STP protocol. To provide fast access speed to the file server for most of the users, the switch that is directly connected with file server is configured as the root bridge.

- A. True
- B. False

**Answer: A**

**Explanation:**

**QUESTION NO: 50**

Which of the following statements about the link failure detection in STP protocol is not true?

- A. When network topology is stable, the Designated Port sends BPDU packet at every Hello Time interval.
- B. When network topology is stable, BPDU packets will be transmitted periodically.
- C. When the port does not receive new BPDU within a certain interval, the old configuration BPDU will time out and the link failure can be detected.
- D. The port sends Configuration BPDU at every Hello Time interval. When the link fails, Configuration BPDU can not be sent out. As a result, this port can detect the link failure.

**Answer: D**

**Explanation:**

**QUESTION NO: 51**

Which of the following statements about STP is not true?

- A. STP can manage redundant links.
- B. STP can block redundant links to eliminate loops
- C. STP can prevent temporary loss of connectivity
- D. STP can make LAN switch operate normally in a network with loops

**Answer: C**

**Explanation:**

**QUESTION NO: 52**

According to OSI reference model, Layer 2 LAN switch operates at ( ).

- A. Physical layer
- B. Data link layer
- C. IP layer
- D. Application layer

**Answer: B**

**Explanation:**

**QUESTION NO: 53**

According to the STP protocol, a certain field in the BPDU identifies the root switch. That is, if the BPDU sent by a switch contains this field, this switch is considered as the root switch. What is this field?

- A. Root Identifier
- B. Root Path Cost
- C. Bridge Identifier
- D. Port Identifier

**Answer: A**

**Explanation:**

**QUESTION NO: 54**

Which are the two parts in the port identifier of the uplink interface on a non-root switch?

- A. 1-bit port priority and 1-bit port number
- B. 1-bit port priority and 2-bit port number
- C. 2-bit port priority and 1-bit port number
- D. 2-bit port priority and 2-bit port number

**Answer: A**

**Explanation:**

**QUESTION NO: 55**

In the network diagram, which switch will be selected as the root switch?

- A. SWA
- B. SWB
- C. SWC
- D. None of the above

**Answer: A**

**Explanation:**

**QUESTION NO: 56**

Which statements about the PVID on the access interface are true? (Select 3 Answers)

- A. When receiving a packet without the VLAN tag, the interface adds the VLAN tag to the packet and sets the VID in the tag to the default VLAN ID.
- B. When receiving a packet with a VLAN tag, the interface compares the VLAN ID in the tag with the default VLAN ID. If they are the same, the interface forwards the packets; otherwise, the interface discards the packets.
- C. When the interface sends a packet with a VLAN tag that contains the default VLAN ID, the system removes the VLAN tag of the packet, and then forwards the packet.
- D. None of the above.

**Answer: A,B,C**

**Explanation:**

**QUESTION NO: 57**

Which statement about the hybrid interface is true?

- A. A hybrid interface can only be connected to network device.
- B. A hybrid interface can only be connected to host.
- C. A hybrid interface can be connected to host or network device.
- D. A hybrid interface cannot be configured with VLAN ID.

**Answer: C**

**Explanation:**

**QUESTION NO: 58**

Which statement about MUX VLAN is false?

- A. Principal VLAN
- B. Subordinate VLAN
- C. Subordinate group VLAN
- D. Guest VLAN

**Answer: D**

**Explanation:**

**QUESTION NO: 59**

Which statements about the MUX VLAN configuration are true? (Select 2 Answers)

[Quidway]vlan 10

[Quidway-vlan10]mux-vlan

[Quidway-vlan10]subordinate group 11

[Quidway-vlan10]subordinate separate 12

- A. VLAN 10 is the principal VLAN
- B. VLAN 11 is the principal VLAN
- C. VLAN 12 is the subordinate separate VLAN

**Answer: A,C**

**Explanation:**

**QUESTION NO: 60**

When configuring VLAN mapping, you must set the priority of outer VLAN ID.

- A. True
- B. False

**Answer: B**

**Explanation:**

**QUESTION NO: 61**

The port isolation function can isolate the ports on the same switch.

- A. True
- B. False

**Answer: A**

**Explanation:**

**QUESTION NO: 62**

Which statements are false?

- A. The VLAN mapping function is usually configured on the edge node of a public network.
- B. The VLAN mapping function can save VLAN resources on a public network.
- C. VLAN mapping allows private networks on different VLANs to communicate with each other over the ISP network.
- D. VLAN mapping allows only the private networks on the same VLAN to communicate with each other.

**Answer: D**

**Explanation:**

**QUESTION NO: 63**

Which statements about VLAN are true? (Select 3 Answers)

- A. The VLAN improves network security. Users on different VLANs cannot communicate with each other.
- B. The VLAN improves network processing efficiency. Users on different VLANs are separated from each other. Therefore, the size of a broadcast domain is reduced.
- C. Layer 2 forwarding is only based on destination MAC addresses, and is irrelevant to VLAN configuration.
- D. The VLAN technology is a management method that controls the communication between terminals.

**Answer: A,B,D**

**Explanation:**

**QUESTION NO: 64**

Which statements about the VLAN on S series switches are true? (Select 2 Answers)

- A. The VLAN IDs on the switch range from 1 to 4090.
- B. The switch has a default VLAN.
- C. The priority value in the VLAN tag can be changed on the switch.
- D. A VLAN tag contains one byte.

**Answer: B,C**

**Explanation:**

**QUESTION NO: 65**

If the customer requires high mobility and easy management, the staff of different departments can be added to different VLANs. In addition, these VLANs are located on different IP subnets. Which VLAN allocation mode can meet these requirements?

- A. VLAN allocation based on source IP addresses
- B. VLAN allocation based on destination IP addresses
- C. VLAN allocation based on source IP addresses and source MAC addresses
- D. VLAN allocation based on destination MAC addresses and destination IP addresses

**Answer: A**

**Explanation:**

**QUESTION NO: 66**

Which statements about the access interface are true? (Select 3 Answers)

- A. Only the VLAN whose ID is the same as the PVID of the access interface are allowed on the access interface.
- B. When receiving an untagged frame, the access interface adds its own PVID to the frame.
- C. The access interface sends only untagged frames to the peer device.
- D. None of the above.

**Answer: A,B,C**

**Explanation:**

**QUESTION NO: 67**

Which statement about the trunk interface is true?

- A. A trunk interface is always connected to hosts.
- B. "multiple" VLAN IDs can be set on a trunk interface. The VLAN IDs can be the same as or different from the PVID.
- C. The trunk interface cannot have a PVID.
- D. If the trunk interface receives a packet with a VLAN not in the allowed VLAN list, the trunk interface broadcast the packet in the VLAN.

**Answer: B**

**Explanation:**

**QUESTION NO: 68**

Which statements about MUX VLAN are true? (Select 2 Answers)

- A. MUX VLAN contains a principal VLAN and subordinate VLANs. The principal VLAN and subordinate VLANs cannot communicate.
- B. MUX VLAN contains a principal VLAN and subordinate VLANs. The subordinate VLANs are classified into subordinate separate VLANs and subordinate group VLANs. The interfaces in the subordinate group VLAN can communicate with each other.
- C. The principal VLAN and subordinate VLANs can communicate.
- D. The interfaces of different subordinate separate VLANs can communicate with each other, but cannot communicate with the interfaces in the principal VLAN.

**Answer: B,C**

**Explanation:**

**QUESTION NO: 69**

Which statement is true?

- A. The principal VLAN must be configured before subordinate VLANs.



- B. The MUX VLAN function takes effect without being enabled on an interface.
- C. In MUX VLAN, a VLAN can function as both principal VLAN and subordinate VLAN.
- D. The MUX VLAN can contain only one subordinate separate VLAN.

**Answer: A**

**Explanation:**

**QUESTION NO: 70**

Which statement about ARP proxy is false?

- A. The ARP proxy, namely, the gateway, sends ARP request for the host. The MAC address in the ARP request packet is the MAC address of the host.
- B. The ARP proxy, namely, the gateway, sends ARP request for the host. The MAC address in the ARP request packet is the MAC address of its own interface.
- C. ARP proxy is also called promiscuous ARP or ARP hack.
- D. The ARP proxy allows the hosts on the networks with the same network ID to communicate with each other.

**Answer: A**

**Explanation:**

**QUESTION NO: 71**

Which statement is false?

- A. The switch supports 1:1 VLAN mapping.
- B. The switch does not support N:1 VLAN mapping on an interface.
- C. The switch can perform VLAN mapping for double-tagged packets.
- D. The switch can map the outer VLAN ID of packets to another VLAN ID.

**Answer: B**

**Explanation:**

**QUESTION NO: 72**

Which statement about VLAN is false?

- A. A VLAN tag contains a 3-bit priority field. The priority value ranges from 0 to 7. It is used for differentiated service forwarding.
- B. The priority in the VLAN tag can be mapped to the internal priority of the switch, for differentiated service forwarding.
- C. The priority in the VLAN tag can be changed on the switch.
- D. The priority in the VLAN tag cannot be changed.

**Answer: D**

**Explanation:**

### QUESTION NO: 73

Which statements are true? (Select 3 Answers)

- A. The routing ARP proxy allows the hosts on different physical networks of the same network segment to communicate with each other.
- B. The intra-VLAN ARP proxy allows isolated users on a VLAN to communicate with each other.
- C. The inter-VLAN ARP proxy allows hosts on different VLANs to communicate with each other through Layer 3.
- D. The inter-VLAN ARP proxy function can't be enabled on the VLANIF interface of the super VLAN to implement communication between sub-VLANs.

**Answer: A,B,C**

**Explanation:**

### QUESTION NO: 74

Which statement about VLAN mapping is true?

- A. The interface configured with VLAN mapping must be a hybrid interface.
- B. The same VLANs on different interfaces cannot be mapped to different VLANs.
- C. Different VLANs on the same interface can be mapped to the same VLAN.
- D. Any types of interfaces can be configured with VLAN mapping.

**Answer: C**

**Explanation:**

### QUESTION NO: 75

Which statement about port isolation configuration is false?

- A. Port isolation can be used for Layer 2 isolation.
- B. In port isolation mode, ports are isolated at Layer 2 but can communicate at Layer 3 by default.
- C. Before the port isolation function takes effect on an interface, the port isolation function must be enabled first.
- D. The port-isolate enable command can run in the system view.

**Answer: D**

**Explanation:**

**QUESTION NO: 76**

Which VLAN assignment methods are supported by the Huawei S9300? (Select 3 Answers)

- A. Assigning VLANs based on Layer 7 protocols
- B. Assigning VLANs based on protocols
- C. Assigning VLANs based on IP subnets
- D. Assigning VLANs based on MAC addresses

**Answer: B,C,D**

**Explanation:**

**QUESTION NO: 77**

Which statements about VLAN aggregation are true? (Select 3 Answers)

- A. "multiple" VLANs (broadcast domains) are on the same physical network; therefore, different VLANs belong to the same subnet.
- B. VLAN aggregation can save IP addresses.
- C. Only the super VLAN requires an IP address, but sub-VLANs do not need.
- D. The VLAN that is used to separate broadcast domains is called super VLAN.

**Answer: A,B,C**

**Explanation:**

**QUESTION NO: 78**

Which statement about VLAN mapping is false?

- A. VLAN mapping is also called VLAN translation.
- B. VLAN mapping can implement translation between C-VLAN IDs and S-VLAN IDs.
- C. VLAN mapping can be configured.
- D. VLAN mapping means that a VLAN tag is added to packets.

**Answer: D**

**Explanation:**

**QUESTION NO: 79**

Which statement about the VLAN on a Layer 2 switch is true?

- A. The CFI in the VLAN tag specifies whether the priority in the VLAN tag is valid.
- B. The VLAN tag is located in the Layer 2 header of a packet.
- C. The CFI in the VLAN tag contains two bits.
- D. A VLAN on the switch is a broadcast domain. The broadcast domains are separated.

**Answer: A**

**Explanation:**

**QUESTION NO: 80**

Which statements about VLAN configuration are true? (Select 2 Answers)

- A. You can enter the VLAN view at the same time you create a VLAN.
- B. If you run undo vlan, the VLAN is invalid, but still exists. You do not need to create the VLAN when you use it next time.
- C. You can configure a character string of VLAN description. The length of the character string is not limited.
- D. If you do not enter the VLAN ID when running the display vlan command, information about all VLANs will be displayed.

**Answer: A,D**

**Explanation:**

**QUESTION NO: 81**

Which statement about the following configuration is true?

port link-type hybrid

port hybrid pvidvlan 2

port hybrid untagged vlan 2

port hybrid tagged vlan 3

- A. The default VLAN of the interface is VLAN 2.
- B. The port hybrid tagged vlan 3 command configures the VLAN for a hybrid interface. Frames in the VLAN then pass through the hybrid interface in untagged mode.
- C. The port hybrid untagged vlan 2 command configures the VLAN for a hybrid interface. Frames in the VLAN then pass through the hybrid interface in tagged mode.
- D. All of the above.

**Answer: A**

**Explanation:**

#### **QUESTION NO: 82**

Which statements about VLAN mapping are true? (Select 2 Answers)

- A. When sending a frame from the local VLAN, the switch replaces the VLAN tag in the frame with another VLAN tag.
- B. When receiving a frame from another VLAN, the switch replaces the VLAN tag of the frame with the local VLAN tag.
- C. When an interface receives a frame from another VLAN, it does not replace the VLAN tag of the frame. The interface replaces the VLAN tag of the frame with another VLAN tag only when it sends a frame.
- D. The interface replaces the VLAN tag of only the frame received from another VLAN, but does not change the VLAN tag of the frame it sends out.

**Answer: A,B**

**Explanation:**

#### **QUESTION NO: 83**

Which statements are true? (Select 3 Answers)

- A. Port isolation is a mechanism that controls the access between switch interfaces.
- B. Port isolation is an isolation mechanism at the physical layer.
- C. Port isolation prevents the computers connected to different ports from accessing each other.
- D. Port isolation can be configured based on VLANs.

**Answer: A,B,C**

**Explanation:**

**QUESTION NO: 84**

Which statements are true? (Select 3 Answers)

- A. The sub-VLANs are configured in the super VLAN view.
- B. VLANs 1 to 4094 can be configured as a super VLAN.
- C. The aggregate-vlan command is used to configure the super VLAN.
- D. A VLAN to be configured as a super VLAN cannot contain any interface.

**Answer: A,C,D**

**Explanation:**

**QUESTION NO: 85**

Which statements about VLAN allocation are true? (Select 3 Answers)

- A. The IP subnet VLAN is used to send the packets from the specified network segment or IP address over the specified VLAN.
- B. The MAC address- or IP subnet-based VLAN is valid for only the untagged packets.
- C. The protocol-based VLAN has a higher priority than the IP subnet-based VLAN.
- D. The protocol-based VLAN indicates that service types on the network are bound to VLANs.

**Answer: A,B,D**

**Explanation:**

**QUESTION NO: 86**

Which is contained in the GVRP VLAN deregistration message?

- A. Specified VLAN ID

- B. Specified IP address
- C. Specified MAC address
- D. Known port number

**Answer: C**

**Explanation:**

**QUESTION NO: 87**

On a switch running GVRP, each interface is considered as a participant. The participants can exchange information.

- A. True
- B. False

**Answer: A**

**Explanation:**

**QUESTION NO: 88**

When the GVRP registration mode is FORBIDDEN, no VLAN can be created or registered on the interface. In addition, which VLANs are deregistered on the interface?

- A. All VLANs except VLAN 1
- B. All VLANs except VLAN 4095
- C. All VLANs
- D. All VLANs except the VLAN specified by the user

**Answer: A**

**Explanation:**

**QUESTION NO: 89**

Which are contained in a GARP participant? (Select 2 Answers)

- A. GARP Application
- B. GARP Information Propagation (GIP)
- C. GARP Information Declaration (GID)

D. Interface LLC

**Answer: A,C**

**Explanation:**

**QUESTION NO: 90**

When the GVRP registration mode is FIXED, which statement is true?

- A. VLANs can be manually created and registered on the interface, and can also be dynamically registered and deregistered on the interface.
- B. VLANs cannot be manually created and registered on the interface, but can be dynamically registered and deregistered on the interface.
- C. VLANs can be manually created and registered on the interface, but cannot be dynamically registered or deregistered on the interface.
- D. VLANs cannot be manually created and registered on the interface, and cannot be dynamically registered or deregistered on the interface.

**Answer: C**

**Explanation:**

**QUESTION NO: 91**

Which statements about the relationship between GVRP and GARP are true? (Select 2 Answers)

- A. GVRP, GARP, and GMRP are the standards of the same type.
- B. GVRP and GARP are defined by IEEE 802.1p.
- C. GVRP is based on GARP, and is an application of GARP.
- D. GVRP is a new definition of GARP.

**Answer: B,C**

**Explanation:**

**QUESTION NO: 92**

GARP involves various messages. Besides JoinIn message and Leave message, which are also the GARP messages? (Select 3 Answers)



- A. Notice
- B. Empty
- C. JoinEmpty
- D. LeaveAll

**Answer: B,C,D**

**Explanation:**

**QUESTION NO: 93**

As shown in the figure, port 1 of switch A is configured with the Fixed mode, and other ports are configured with the Normal mode. The trunk interfaces allow all VLANs. Which VLANs are registered on port 1 of switch C? (Select 3 Answers)

- A. VLAN 1
- B. VLAN 5 to VLAN 10
- C. VLAN 15 to VLAN 20
- D. VLAN 25 to VLAN 30

**Answer: A,B,C**

**Explanation:**

**QUESTION NO: 94**

If 802.1x authentication is enabled on an interface, MAC address authentication (enabled by the mac-authen enable command) and direct authentication (enabled by the direct-authen enable command) cannot be enabled on the interface.

- A. True
- B. False

**Answer: A**

**Explanation:**

**QUESTION NO: 95**

Which are 802.1x authentication modes? (Select 2 Answers)

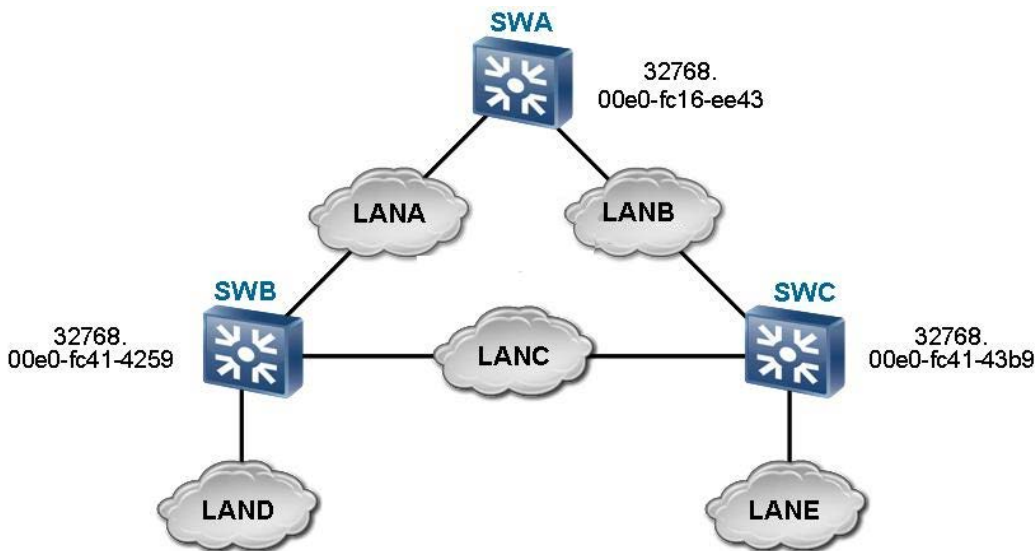
- A. EAP relay mode
- B. Proxy mode
- C. EAP termination mode
- D. Remote mode

**Answer: A,C**

**Explanation:**

### QUESTION NO: 96

Before configuring 802.1x services, you need to determine the configuration roadmap and prepare data.



Which are general steps in the configuration roadmap? (Select 3 Answers)

- A. Configure a Tftp server.
- B. Configure an AAA authentication template.
- C. Configure a domain.
- D. Configure 802.1x authentication.

**Answer: B,C,D**

**Explanation:**

### QUESTION NO: 97

After detecting a user with a new MAC address, the switch initiates an EAP authentication request.

If the client does not respond and the MAC address bypass authentication is not configured, which statement is false?

- A. If the client does not respond after the number of authentication requests reaches a specified value, the switch considers that the client software is not installed.
- B. All permissions of the user are prohibited.
- C. The user is allowed to access only the isolated zone.
- D. Detection is initiated again after a period of time.

**Answer: B**

**Explanation:**

### **QUESTION NO: 98**

The Layer 2 packet header in EAPoL packets is | DMAC | SMAC | TYPE | EAPOL | FCS |. Which statements are true? (Select 3 Answers)

- A. The destination address of packets is a specified MAC address.
- B. The destination address of packets is a unicast MAC address.
- C. EAPoL packets cannot be forwarded by switches.
- D. The source MAC address of packets is the MAC address of the interface that sends packets.

**Answer: A,C,D**

**Explanation:**

### **QUESTION NO: 99**

The dot1x command is used to enable 802.1x authentication globally or on an interface. Which statements about the undo dot1x command are true? (Select 3 Answers)

- A. It is used to disable 802.1x authentication globally.
- B. It will disconnect online users from the interface; therefore, use the command with caution.
- C. It is used to disable 802.1x authentication on an interface.
- D. Ensure that there are no online users before you run the undo dot1x command. Otherwise, running the undo dot1x command fails.

**Answer: A,C,D**

**Explanation:**

**QUESTION NO: 100**

The dot1x authentication-method command is used to set the 802.1x authentication mode. Which is the most secure authentication mode?

- A. PAP
- B. EAP
- C. CHAP
- D. EAP-TTLS

**Answer: C**

**Explanation:**

**Topic 2, Volume B**

**QUESTION NO: 101**

Which statements about guest VLAN configuration are true? (Select 3 Answers)

- A. The guest VLAN must be created before you configure the guest VLAN.
- B. The default VLAN of the interface cannot be configured as the guest VLAN.
- C. Different interfaces can be configured with different guest VLANs.
- D. An interface can be configured with up to eight guest VLANs.

**Answer: A,B,C**

**Explanation:**

**QUESTION NO: 102**

If you have run the dot1x port-method command with the port parameter specified (port-based 802.1x authentication), the maximum number of users on an interface changes to 1. In this case, which statements are true? (Select 2 Answers)

- A. You can run the dot1x max-user command to change the maximum number of access users.
- B. You cannot run the dot1x max-user command to set the maximum number of access users.
- C. You need to run the undo dot1x port-method command, and then set the maximum number of access users.
- D. All of the above

**Answer: B,C**

**Explanation:**

**QUESTION NO: 103**

What is the function of DHCP Offer messages?

- A. DHCP Offer messages are broadcast by the client to detect the available server.
- B. DHCP Offer messages are sent by the server to respond to the DHCP Discover messages sent by the client. Certain configuration parameters are specified in the Offer messages.
- C. DHCP Offer messages are sent by the client to apply to the server for configuration parameters, configuration confirmation, or extension of the IP address lease.
- D. DHCP Offer messages are sent from the server to the client. They contain configuration parameters such as including the IP address.

**Answer: B**

**Explanation:**

**QUESTION NO: 104**

The option field in DHCP messages uses the CLV mode.

- A. True
- B. False

**Answer: A**

**Explanation:**

**QUESTION NO: 105**

Which encapsulation mode is used for DHCP messages?

- A. TCP encapsulation
- B. RTP encapsulation
- C. UDP encapsulation
- D. PPP encapsulation

**Answer: C**

**Explanation:**

**QUESTION NO: 106**

The option field in DHCP messages has a fixed length of four bytes.

- A. True
- B. False

**Answer: B**

**Explanation:**

**QUESTION NO: 107**

What is the function of the client IP address field in DHCP messages?

- A. It is used by the client in bound, renew, or rebinding state to respond to ARP request packets.
- B. It specifies the IP address allocated by the DHCP server to a client.
- C. It specifies the next server address used in the Bootstrap and is contained in DHCP Offer or DHCP ACK messages.
- D. It specifies the DHCP relay address.

**Answer: A**

**Explanation:**

**QUESTION NO: 108**

Which fields does the DHCP binding table contain? (Select 3 Answers)

- A. MAC address
- B. route table
- C. IP address lease time
- D. Interface and VLAN

**Answer: A,C,D**

**Explanation:**

**QUESTION NO: 109**

An address needs to be allocated to a host connected to the network temporarily or a group of IP

addresses need to be allocated to the hosts that do not require permanent IP addresses. Which address allocation mode does the DHCP server use?

- A. Automatic allocation
- B. Dynamic allocation
- C. Manual allocation
- D. All of the above

**Answer: B**

**Explanation:**

**QUESTION NO: 110**

What are the similarities of DHCP and BOOTP? (Select 2 Answers)

- A. They work in client/server model.
- B. They work in static address allocation mode.
- C. They can dynamically obtain DNS addresses.
- D. They use the same packet structure.

**Answer: A,D**

**Explanation:**

**QUESTION NO: 111**

Which messages are sent from the client to the server? (Select 3 Answers)

- A. DHCP NAK
- B. DHCP REQUEST
- C. DHCP DISCOVER
- D. DHCP RELEASE

**Answer: B,C,D**

**Explanation:**

**QUESTION NO: 112**

When a client applies for an IP address through DHCP, which message is the unicast message?

To Read the [Whole Q&As](#), please purchase the [Complete Version](#) from [Our website](#).

# Trying our product !

- ★ **100%** Guaranteed Success
- ★ **100%** Money Back Guarantee
- ★ **365 Days** Free Update
- ★ **Instant Download** After Purchase
- ★ **24x7** Customer Support
- ★ Average **99.9%** Success Rate
- ★ More than **69,000** Satisfied Customers Worldwide
- ★ Multi-Platform capabilities - **Windows, Mac, Android, iPhone, iPod, iPad, Kindle**

## Need Help

Please provide as much detail as possible so we can best assist you.

To update a previously submitted ticket:



 <b>One Year Free Update</b> <p>Free update is available within One Year after your purchase. After One Year, you will get 50% discounts for updating. And we are proud to boast a 24/7 efficient Customer Support system via Email.</p>	 <b>Money Back Guarantee</b> <p>To ensure that you are spending on quality products, we provide 100% money back guarantee for 30 days from the date of purchase.</p>	 <b>Security &amp; Privacy</b> <p>We respect customer privacy. We use McAfee's security service to provide you with utmost security for your personal information &amp; peace of mind.</p>
---	---	--

[Guarantee & Policy](#) | [Privacy & Policy](#) | [Terms & Conditions](#)

Any charges made through this site will appear as Global Simulators Limited.

All trademarks are the property of their respective owners.

Copyright © 2004-2015, All Rights Reserved.