

100% Money Back
Guarantee

Vendor: EXIN

Exam Code: EX0-113

Exam Name: TMap Next Foundation

Version: Demo

Topic 1, Volume A

QUESTION NO: 1

See the definition below:

Tests in which the supplying party demonstrates that the product particularly meets the functional and non-functional specifications and the technical design, among other things.

Of which test level is this the definition?

- A. acceptance test
- B. development test
- C. system test

Answer: C

QUESTION NO: 2

In which Map phase activity does the pre-test take place?

- A. Defining central starting points
- B. Intake of the test object
- C. Specifying the test object intake
- D. Executing (re)tests

Answer: B

QUESTION NO: 3

Which defect has an internal cause that can be solved within the test team?

- A. a defect in the test basis
- B. a defect in the test specification
- C. a defect in the test object

Answer: B

QUESTION NO: 4

Under which circumstance can Exploratory Testing be used effectively?

- A. when experienced testers with domain knowledge are available
- B. when testing must be as brief as possible on the critical path of the project
- C. when critical functionality, failure of which can cause severe damage, must be tested

Answer: A

QUESTION NO: 5

What is not an advantage of applying a test design technique and recording it in the test specifications?

- A. that the tests are reproducible
- B. that the test specifications are transferable
- C. that coverage of 100% is achieved
- D. that it provides a justified elaboration of the test strategy

Answer: C

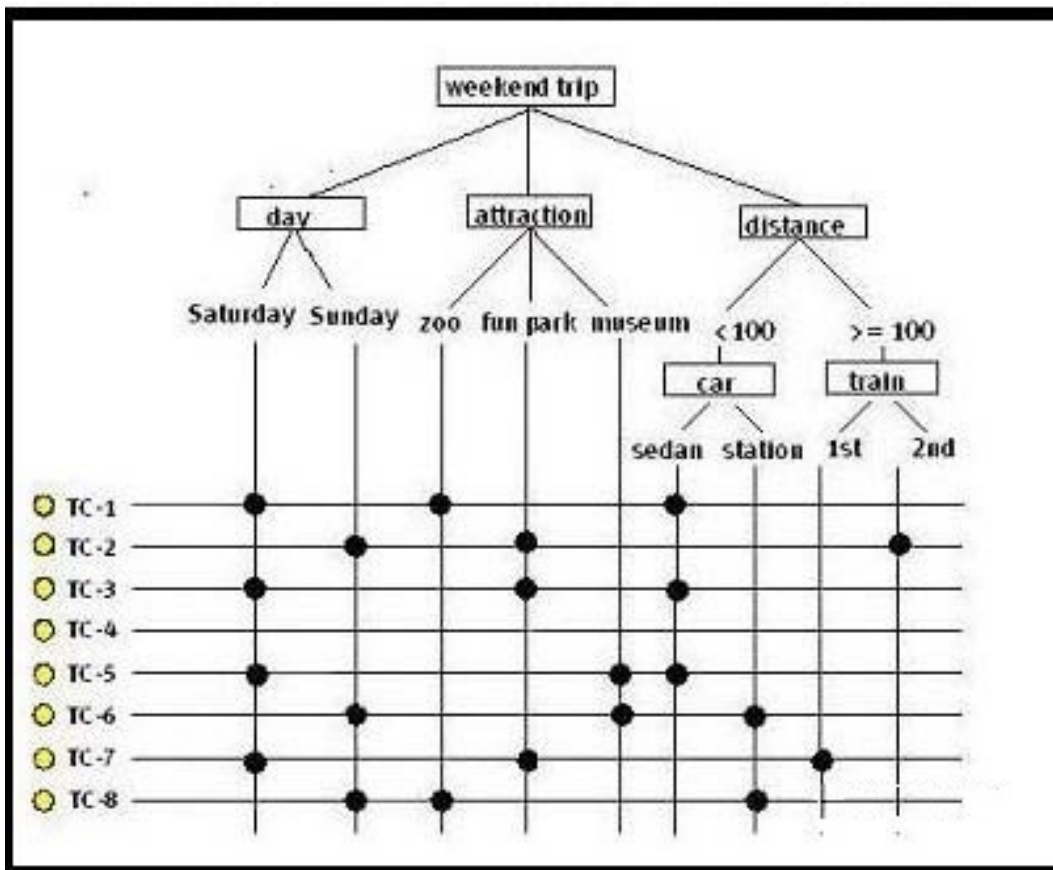
QUESTION NO: 6

See the illustration below:

To test a registration application for a weekend trip, logical test cases must be created in accordance with the Data Combination Test. In addition, it has been agreed that less depth testing must be performed. One data pair has been defined that must be fully tested in combination:

- car - attraction

Eight test cases are designed using a classification tree.



Where must the 'bullets' for test case 4 be placed?

- A. Saturday, fun park, 2nd
- B. Sunday, museum, station
- C. Sunday, fun park, station

Answer: C

QUESTION NO: 7

A structured testing approach is characterized by:

- providing concrete footholds
- covering the full scope and describing the complete range of relevant aspects
- providing a structure, so that it is clear what exactly by whom, when and in what sequence has to be done

What is the fourth characteristic?

- A. it delivers insight into and advice on any risks in respect of the quality of the tested system

- B. managing test activities in the context of time, money and quality
- C. the testing is on the critical path of the total development, as briefly as possible, so that the total lead time of development is shortened
- D. to find defects at an early stage

Answer: B

QUESTION NO: 8

During the Process Cycle Test, the coverage type paths is used. In which way can coverage be varied here?

- A. by using boundary values
- B. by using a higher or lower test depth level
- C. by taking equivalence classes into consideration

Answer: B

QUESTION NO: 9

Which activity is not part of the Completion phase?

- A. updating the testware to be preserved
- B. assessing test results
- C. evaluating the test process
- D. selecting the testware to be preserved

Answer: B

QUESTION NO: 10

Which type of tool is used in the Execution phase to test a module or component that has a relationship with programs that have not yet been realized?

- A. code coverage tool

- B. comparator
- C. 'model-based testing' tool
- D. stubs and drivers

Answer: D

QUESTION NO: 11

For the creation of the central starting point there are several techniques. In the given situation it is necessary that consistency between the data entered is guaranteed. Which of the techniques below is preferable if only one technique may be used?

- A. use of production data
- B. entering through separate front-end software
- C. entering through regular system functions

Answer: C

QUESTION NO: 12

See the definition below: The ease with which the information system can be adapted to new requirements of the user and the changing external environment, or to correct errors. Of which quality characteristic is this the definition?

- A. manageability
- B. flexibility
- C. maintainability

Answer: C

QUESTION NO: 13

See the decision and test situations below:

R = (A AND B) OR C

1.A=false	B=true	C=false
2.A=false	B=false	C=true
3.A=true	B=true	C=false

Which test situation is missing if the coverage type decision points modified condition/decision coverage is used?

A.

A=true	B=true	C=true
--------	--------	--------

B.

A=true	B=false	C=false
--------	---------	---------

A. Option A

B. Option B

Answer: B

QUESTION NO: 14

See the specification below in which a decision point is described:

$R = (D \text{ OR } E) \text{ AND } F$

Use of the coverage type decision points modified condition/decision coverage produces the following table with test situations:

$R = (D \text{ OR } E) \text{ AND } F$	1	0
D	101	001
E	.	001
F	101	100

Which values are missing where the dots are stated (? to make the table complete?)

A. 010

B. 011

C. 110

D. 111

Answer: B**QUESTION NO: 15**

See the specification of a discount campaign below:

Children younger than 4 years of age (<4)	: free
Children of 4 years or older, but younger than 13 years(>4 and <13)	: 50% discount
Adults older than 64 years (>64)	: 50% discount

How many equivalence classes can be distinguished from the above specification?

- A. 3
- B. 4
- C. 5

Answer: B**QUESTION NO: 16**

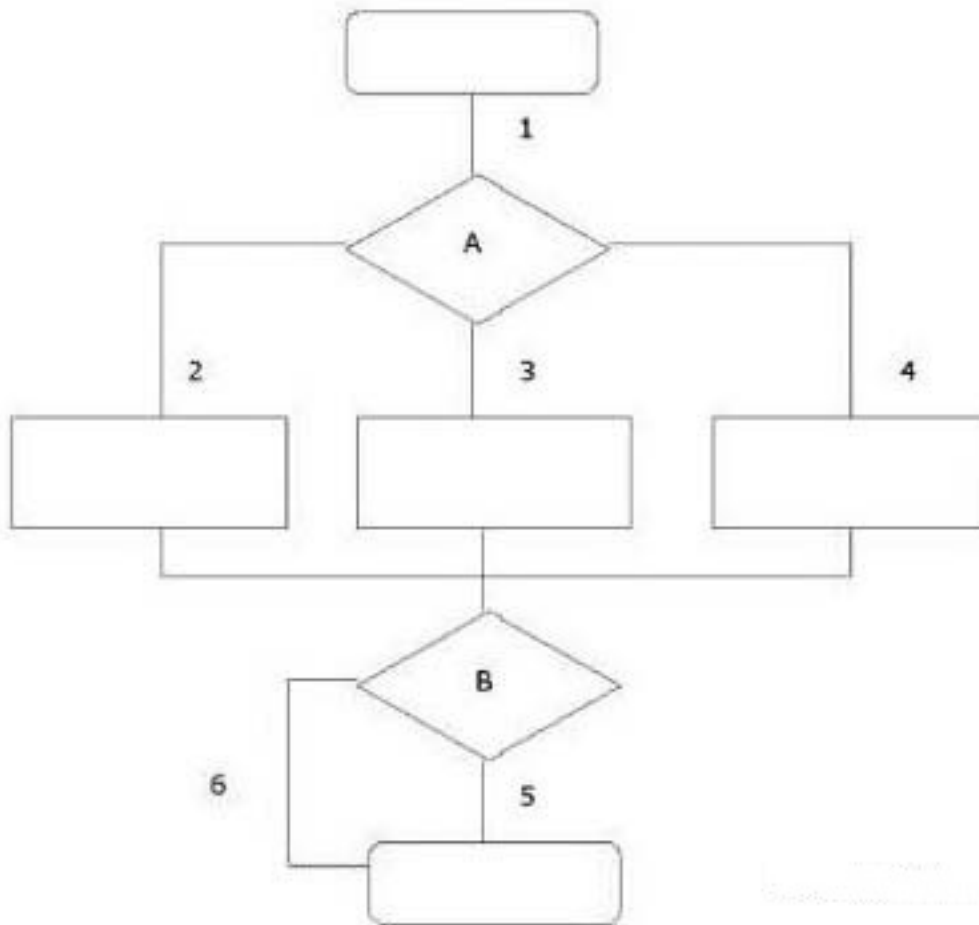
The specification of test cases according to a test design technique follows five general steps. Which step is establishing the starting point? Which step is ?establishing the starting point?

- A. step 2
- B. step 3
- C. step 4
- D. step 5

Answer: C

QUESTION NO: 17

See the illustration below:



Which test situations can be differentiated when the coverage type paths test depth level 2 is used?

- A. 1-2; 2-3; 3-4; 2-4; 2-5; 2-6; 3-5; 3-6; 4-5; 4-6; 5-6
- B. 1-2; 1-3; 1-4; 2-5; 3-5; 4-5; 2-6; 3-6; 4-6
- C. 1-2-5; 1-2-6; 1-3-6; 1-3-5; 1-4-6; 1-4-5

Answer: B

QUESTION NO: 18

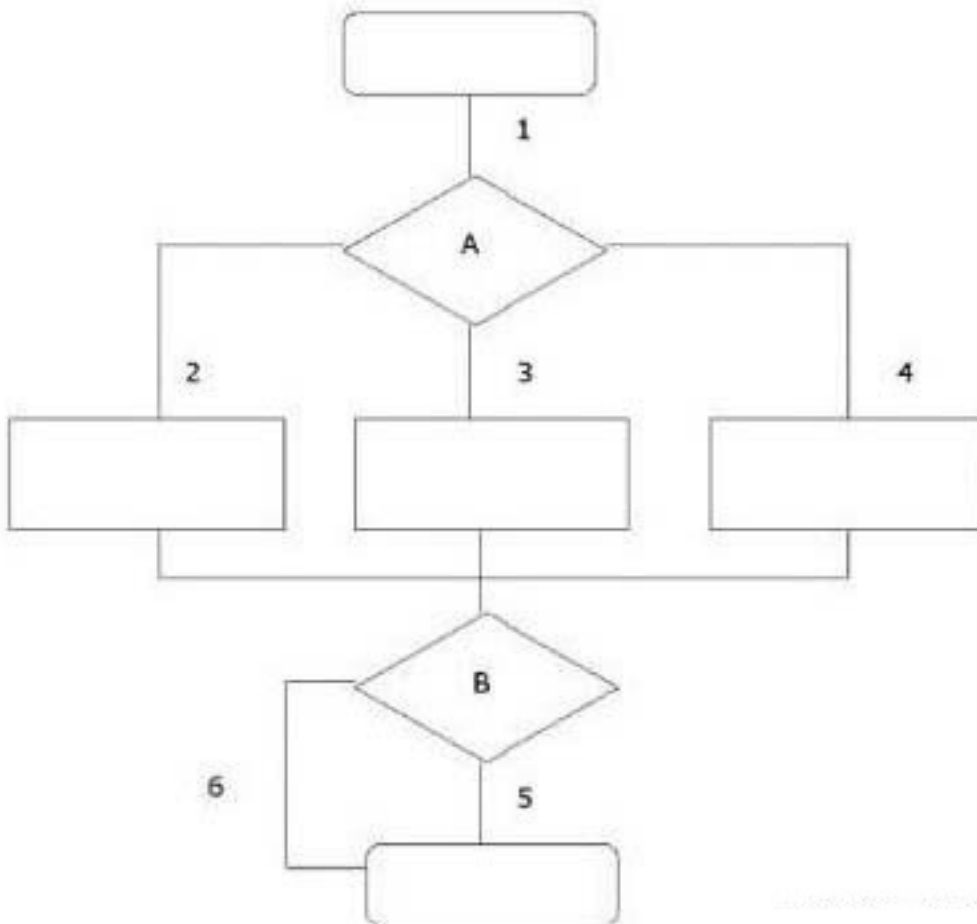
Which system development method is agile and contains structured guidelines for development testing?

- A. DSDM
- B. SDM
- C. XP

Answer: C

QUESTION NO: 19

See the illustration below:



What is the minimum number of logical test cases generated by the use of the Process Cycle Test if the coverage type paths test depth level 2 is used?

- A. 3
- B. 5
- C. 6
- D. 9

Answer: C

QUESTION NO: 20

The test infrastructure consists of facilities and resources required to conduct testing effectively. Which facility does not belong to the testing infrastructure?

- A. test environments
- B. test design techniques
- C. test tools
- D. workplaces

Answer: B

QUESTION NO: 21

See the specification below:

IF A AND (B OR C)

THEN error message

ENDIF

How many logical test cases are distinguished if Semantic Testing with coverage type decision points condition/decision coverage is used?

- A. 2
- B. 3
- C. 4
- D. 8

Answer: A

QUESTION NO: 22

What can be avoided by consolidating separate checklists into one checklist for assessing a test

basis?

- A. finding the same test basis defect more often
- B. using a particular checklist in both the acceptance and system tests
- C. that every project compiles its own checklist
- D. duplicating work on identical parts of the test basis during the evaluation

Answer: D

QUESTION NO: 23

Which test design technique uses operational profiles and load profiles?

- A. Data Cycle Test
- B. Process Cycle Test
- C. Real-Life Test
- D. Use Case Test

Answer: C

QUESTION NO: 24

What is the aim of the activity 'assessing the test basis'?

- A. to determine the risk of the various system components
- B. to select the most suitable test design techniques
- C. to determine whether the delivered system components can be tested in a useful manner
- D. to establish the testability of the test basis

Answer: D

QUESTION NO: 25

What is not one of the aims of the 'testability review test basis' report?

- A. providing feedback on the quality of the test basis and its impact on the planned test procedure
- B. gaining an insight into the estimation for the test procedure
- C. obtaining information on project risks
- D. discussing the weak spots in the system design on time

Answer: B

QUESTION NO: 26

Three parameters play a role for a printing function and for every parameter there are two equivalence classes to be tested:

font:	arial	verdana
font color:	black	color
font size:	10	12

	font	font color	font size
1	arial	black	10
2	arial	color	12
3	verdana	black	12
4			

Which combination is missing in the table if the coverage type pairwise testing is applied?

- A. arial color 10
- B. arial black 12
- C. verdana color 10
- D. verdana black 10

Answer: C

QUESTION NO: 27

Which of the following statements about 'evaluation' is correct?

- A. evaluation relates to the left-and and right-hand side of the V model
- B. evaluation is the review of end products
- C. evaluation applies to incremental and iterative system development methods

Answer: C

QUESTION NO: 28

With which step in the business driven test management (BDTM) approach follows the step determining risk class? With which step in the business driven test management (BDTM) approach follows the step determining risk class?

- A. determining light/thorough testing
- B. formulating the assignment and gathering test goals
- C. creating test cases
- D. allocating test techniques

Answer: A

QUESTION NO: 29

With which units do you best start the unit integration test?

- A. the units that are ready first
- B. the units that are the worst (least) documented
- C. the units in which the most problems are expected

Answer: C

QUESTION NO: 30

What is not a test benefit?

- A. facilitating good project control by providing information
- B. avoiding repair costs and consequential loss in the production situation
- C. avoiding damage during production
- D. release of a product

Answer: D

To Read the [Whole Q&As](#), please purchase the [Complete Version](#) from [Our website](#).

Trying our product !

- ★ **100%** Guaranteed Success
- ★ **100%** Money Back Guarantee
- ★ **365 Days** Free Update
- ★ **Instant Download** After Purchase
- ★ **24x7** Customer Support
- ★ Average **99.9%** Success Rate
- ★ More than **69,000** Satisfied Customers Worldwide
- ★ Multi-Platform capabilities - **Windows, Mac, Android, iPhone, iPod, iPad, Kindle**

Need Help

Please provide as much detail as possible so we can best assist you.

To update a previously submitted ticket:



 One Year Free Update <p>Free update is available within One Year after your purchase. After One Year, you will get 50% discounts for updating. And we are proud to boast a 24/7 efficient Customer Support system via Email.</p>	 Money Back Guarantee <p>To ensure that you are spending on quality products, we provide 100% money back guarantee for 30 days from the date of purchase.</p>	 Security & Privacy <p>We respect customer privacy. We use McAfee's security service to provide you with utmost security for your personal information & peace of mind.</p>
---	---	--

[Guarantee & Policy](#) | [Privacy & Policy](#) | [Terms & Conditions](#)

Any charges made through this site will appear as Global Simulators Limited.

All trademarks are the property of their respective owners.

Copyright © 2004-2015, All Rights Reserved.