

**Exam** : **E20-533**

**Title** : Networked Storage - SAN  
Specialist

**Version** : Demo

1. What is used for centralized user and group management in a UNIX environment?

- A. NIS
- B. UFS C.
- UDP D.
- NTLM

**Answer: A**

2. What is stored in a Virtual Data Mover's root file system?

- A. NTP
- B. Local Groups
- C. Usermapper configuration
- D. FTP root directory

**Answer: B**

3. What is one characteristic of SnapSure?

- A. can mount a checkpoint on any Data Mover
- B. multiple checkpoints are linked in chronological order
- C. checkpoint is independent of its Production File System
- D. checkpoint shares the same volume as the Production File System

**Answer: B**

4. What is used in a UNIX environment to mount a remote file system?

- A. NFS
- B. UFS
- C. CIFS
- D. VxFS

**Answer: A**

5. When the getreason command is used, which status identifies that a Data Mover needs to be replaced?

- A. contacted B.
- connected C.
- dos booted D.
- powered off

**Answer: D**

6. Which protocols are available when configuring DNS on a Data Mover?

- A. TCP and IP
- B. UDP and IP

- C. TCP and UDP
- D. UDP and ICMP

**Answer: C**

7. A NAS solution is required that includes high availability and always available network connections. The Ethernet switch is made by Typhoon Data Networks and is IEEE compliant. Which EMC NAS networking solution must be implemented?

- A. DHCP
- B. VLAN
- C. LACP
- D. EthernetChannel

**Answer: C**

8. Which industry standard network backup protocol is supported on Celerra?

- A. Simple Data Backup Protocol
- B. Network Data Backup Protocol
- C. Direct Connect Backup Protocol
- D. Network Data Management Protocol

**Answer: D**

9. Which command is used to create a new user on the Data Mover for FTP?

- A. nas\_user
- B. nas\_newuser
- C. server\_user
- D. server\_ftpuser

**Answer: C**

10. On which volume type is a file system created?

- A. Celerra disk volume
- B. Celerra slice volume
- C. Celerra meta volume
- D. Celerra stripe volume

**Answer: C**

11. What are two [2] approved uses of EMC's implementation of Cisco Systems Fast EthernetChannel (Celerra Trunking)?

- A. Bandwidth Aggregation
- B. Fault Tolerance among single switch ports
- C. Fault Tolerance between multiple switch ports

D. Combining multiple physical interfaces into a logical interface

**Answer: BD**

12. Which storage template is available in a NS Integrated system that uses ATA physical drives?

A. CX\_Standard\_Raid\_5

B. CX\_All\_4Plus1\_Raid\_5

C. ATA\_CX\_Standard\_Raid\_1

D. ATA\_RAID3\_HS\_4+1\_8+1

**Answer: D**

13. Which assigns the Fibre Channel WWN?

A. Name server

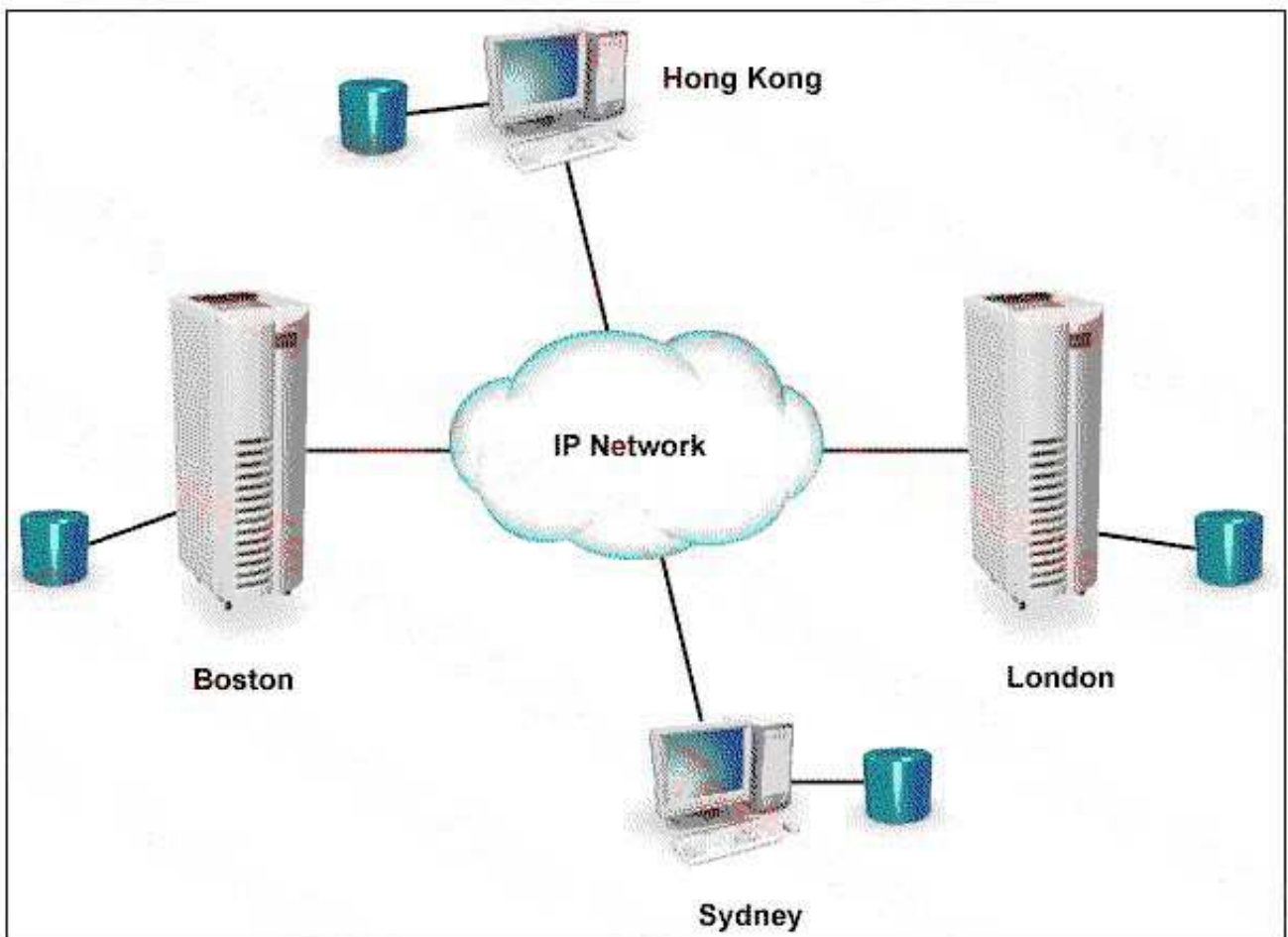
B. Operating system

C. System Administrator

D. Hardware manufacturer

**Answer: D**

14. Click the Exhibit button.



Two Celerras are located in London and Boston. A NAS solution is required that maintains a copy of the

Celerra data on a Sun server in Hong Kong, and an HP server in Sydney. Which NAS solution is appropriate?

A. FarCopy B.

Replicator C.

OnCourse

D. Symmetrix Remote Data Facility

**Answer: C**

15. Which statement is correct about Virtual Data Movers [VDMs]?

A. VDMs can change from UNICODE to ASCII

B. VDMs can be used as default CIFS servers

C. VDMs cannot use shared logical interfaces

D. VDMs can support two CIFS servers with the same computer name

**Answer: C**

16. What is one function of the Control Station?

A. Allows you to configure CLARiiON LUNs

B. Allows you to manage the CNS-14 and everything attached to it

C. Enables you to install and upgrade software on the storage system

D. Provides installation, configuration and management features for the CNS-14

**Answer: D**

17. What is the default type of a Celerra file system?

A. ufs

B. udfs

C. mgfs

D. rawfs

**Answer: B**

18. What is a benefit of Celerra Data Migration Service (CDMS)?

A. Minimal service disruption

B. Manual migration of all old data

C. Automatic data defragmentation

D. Automatic restoration of multi-protocol permissions

**Answer: A**

19. What are two [2] accurate statements about Virtual Data Movers [VDMs]?

A. support NFS only

B. support CIFS and NFS

C. do not support CDMS

D. do not support CPU/memory resource allocation

**Answer:** CD

20. What is the full path for the UNIX "hosts" file?

A. /etc/hosts

B. /unix/hosts

C. C:\etc\hosts

D. C:\winnt\system32\drivers\etc\hosts

**Answer:** A

# Trying our product !

- ★ **100%** Guaranteed Success
- ★ **100%** Money Back Guarantee
- ★ **365 Days** Free Update
- ★ **Instant Download** After Purchase
- ★ **24x7** Customer Support
- ★ Average **99.9%** Success Rate
- ★ More than **69,000** Satisfied Customers Worldwide
- ★ Multi-Platform capabilities - **Windows, Mac, Android, iPhone, iPod, iPad, Kindle**

## Need Help

Please provide as much detail as possible so we can best assist you.

To update a previously submitted ticket:



 <b>One Year Free Update</b> <p>Free update is available within One Year after your purchase. After One Year, you will get 50% discounts for updating. And we are proud to boast a 24/7 efficient Customer Support system via Email.</p>	 <b>Money Back Guarantee</b> <p>To ensure that you are spending on quality products, we provide 100% money back guarantee for 30 days from the date of purchase.</p>	 <b>Security &amp; Privacy</b> <p>We respect customer privacy. We use McAfee's security service to provide you with utmost security for your personal information &amp; peace of mind.</p>
---	---	--

## Guarantee & Policy | Privacy & Policy | Terms & Conditions

Any charges made through this site will appear as Global Simulators Limited.

All trademarks are the property of their respective owners.

Copyright © 2004-2014, All Rights Reserved.