

100% Money Back
Guarantee

Vendor: IBM

Exam Code: C4040-109

Exam Name: Virtualization Technical Support for AIX and
Linux - v2

Version: Demo

Topic 1, Volume A

QUESTION NO: 1

An administrator is attempting to configure a new deployment of 56 POWER7 Blades across 4 IBM BladeCenter H chassis. Each blade will be installed with an IVM and 2 LPARs. IVM is installed and the administrator checks that both LHEA ports are reporting a Link State of "Up." 2 LPARs are created and the network traffic balanced by allocating one LHEA port to the first LPAR, the second port to the other. After successfully installing the first LPAR via NIM, the administrator finds the second LPAR fails to netboot. What should the administrator verify on the BladeCenter Chassis?

- A. That 4 power supplies (PSU) have been installed.
- B. That both the external LHEA ports have been cabled.
- C. That a secondary I/O module has been installed and cabled.
- D. That the Multi-Core Scaling (MCS) attribute is correctly set on both LHEA ports.

Answer: C

Explanation:

QUESTION NO: 2

An administrator has a requirement to back up a VIO server (VIOS) so that it can be rebuilt in the event of a disaster. Which set of actions will achieve this requirement?

- A. Backup all non rootvg volume groups using savevg. Backup all Storage Pool Information. Run a mksysb of the system.
- B. Save "Upgrade Data" on the HMC. Backup all non rootvg volume groups using savevg. Run a mksysb of the VIOS with the -U flag.
- C. Backup non rootvg structures using savevgstruct. Capture virtual mappings to a file using viosbr. Run a backupios
- D. Capture the virtual network tuning to a file using the optimizenet command. Capture all virtual device attributes to a file using the lsattr command. Run a backupios.

Answer: C

Explanation:

QUESTION NO: 3

An administrator must remove any installed efixes before attempting to install a new VIO Fix Pack. Which VIO command will advise if any VIO efixes are actually present?

- A. lspp
- B. emgr
- C. lssw
- D. oem_platform_level

Answer: C

Explanation:

QUESTION NO: 4

Requirements for a disaster recovery site are being collected. When considering restoring a VIO Server mksysb to disaster recovery hardware, what is required to ensure automatic virtual device recreation?

- A. LPAR profiles must be accurately recreated on the foreign machine
- B. Backups of both mksysb and user-defined structures are required from the VIO Server
- C. The foreign machine must be of the same model and type
- D. Configuration of the existing HMC needs to be preserved

Answer: A

Explanation:

QUESTION NO: 5

When attempting to install a VIO client using NIM, an administrator finds that no disks are available for installation. The disks are provided by NPIV through the virtual Fibre Channel adapter as described here:

```

Name          Physloc          CIntID CIntName      CIntOS
-----
vfchost3     U9117,MMB,104200P-V2-C35      11 VIOclient    AIX

Status:LOGGED_IN
FC name:fcs1          FC loc code:U78C0,001,DBJ8223-P2-C2-T2
Ports logged in:3
Flags:a<LOGGED_IN,STRIP_MERGE>
VFC client name:fcs1    VFC client DRC:U9117,MMB,104200P-V11-C35-T1

```

Which of the following explains why is the administrator unable to see the disks?

- A. The virtual fibre channel device has not been assigned to the client.

- B. The HBA on the VIO server is not connected to the SAN.
- C. The fibre device drivers are missing from the SPOT.
- D. The LUNs have been incorrectly zoned.

Answer: D

Explanation:

QUESTION NO: 6

Which of the following is required to support AME?

- A. AIX LPARs
- B. Virtual I/O Server
- C. A maximum of 4GB of RAM per LPAR
- D. On-demand memory feature enabled

Answer: A

Explanation:

QUESTION NO: 7

What tool can an architect use to determine which is the smallest POWER7 server that will provide equal or better overall performance than a POWER5 570?

- A. Facts and Features Guide
- B. LPAR Validation Tool
- C. Configurator for eBusiness
- D. Server Magic

Answer: A

Explanation:

QUESTION NO: 8

A Power 720 is being used to build 2 environments: Test and Production, with 2 LPARs in each environment. Processor resources must be separated between the Test and Production environments to reduce possible contention, while still being able to share processor resources inside each own environment. What are the two features required, as a minimum, to accomplish this? (Select 2)

- A. IVM
- B. HMC
- C. PowerVM Express
- D. PowerVM Standard
- E. IVE
- F. IBM Systems Director

Answer: B,D

Explanation:

QUESTION NO: 9

An administrator has the following configuration on a VIO Server:

```
ent0 and ent1 are Physical ports made into an EtherChannel ent3
ent2 is a virtual device
ent4 is a SEA mapping virtual device ent2 to ent3
```

The administrator runs the `entstat -d ent3` command to analyze EtherChannel statistics and receives this error:

```
entstat: 0909-003 Unable to connect to device ent3, errno = 19
```

Why is this error being displayed?

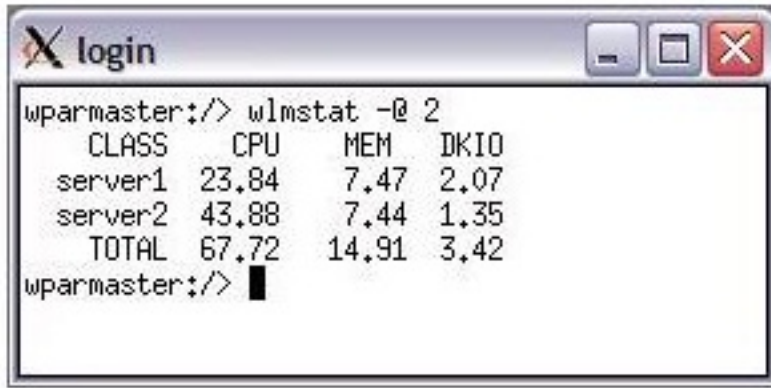
- A. ent3 is configured as 'standard' instead of '802.3ad'
- B. ent3 is a LHEA port and requires the -L flag
- C. ent3 has no interface connected
- D. ent3 is controlled by the SEA

Answer: D

Explanation:

QUESTION NO: 10

The `wlmstat -@ 2` command has been run from a global environment with the following results:



```
wparmater:/> wlmstat -@ 2
  CLASS  CPU    MEM  DKIO
server1 23.84   7.47  2.07
server2 43.88   7.44  1.35
  TOTAL 67.72  14.91  3.42
wparmater:/> █
```

What action can an administrator take to set limits, so that both server1 and server2 use the same amount of CPU resources?

- A. Use the `cpu_deallocate -P` command to reduce the CPU resources on server2
- B. Use the `chsysres` command to assign the same CPU attributes to both servers.
- C. Use the `chwpnr -R` command to set the CPU attributes for each server.
- D. Use the `syncwpar -E` command to copy the CPU resource allocation from server1 to server2.

Answer: C

Explanation:

QUESTION NO: 11

A Linux LPAR is configured using 802.1Q.

The virtual Ethernet device is configured as an 802.1Q compatible adapter and has VLAN ID 5 configured in the 802.1Q additional VLAN field.

The administrator runs the following commands on the Linux LPAR shell without errors:

```
vconfig add eth0 5ifconfig eth0 10.0.0.2 netmask 255.255.255.0
```

When the administrator tries to ping 10.0.0.1, the request times out.

What is the problem?

- A. The VLAN ID should be in the VLAN-ID field in the virtual Network device configuration.
- B. The administrator is using the incorrect Ethernet device.
- C. The 8021q module is not loaded.
- D. The 802.1Q interfaces are not supported on Linux on Power Systems servers.

Answer: A

Explanation:

QUESTION NO: 12

What will cause a broadcast storm when configuring redundant VIO servers with SEA failover?

- A. The secondary SEA is brought online before the configured primary SEA.
- B. A mismatch of defined VLANs between the primary and secondary SEA.
- C. The secondary SEA is created before enabling failover on the primary SEA.
- D. Incorrect EtherChannel configuration on one SEA

Answer: C

Explanation:

QUESTION NO: 13

How can an existing AIX 5.2 LPAR, which is using SAN storage, be migrated into a versioned WPAR (Workload Partition)?

- A. Using LPM, but downtime will be required.
- B. Dynamically using LAM.
- C. Backup and restore a mksysb.
- D. Rezone the SAN storage and use NPIV.

Answer: C

Explanation:

QUESTION NO: 14

An LPAR is configured using Virtual IO. It has two Virtual SCSI adapters, connecting it to two VIO servers.

The disks presented over Virtual SCSI are available across both Virtual SCSI adapters (2 paths).

Assuming 20 disks are required, what is the maximum recommended queue depth to maximize performance?

- A. 20
- B. 22
- C. 510
- D. 512

Answer: A

Explanation:

QUESTION NO: 15

An administrator is preparing to upgrade the environment's dual Virtual I/O servers (VIOS) from V1.2 to V2.1

What must be considered in preparation for this upgrade?

- A. All client LPARs must be shutdown as both VIO servers have to be upgraded to V2.1 at the same time.
- B. The VIOS must be upgraded to the latest fixpack of V1.5 before upgrading to V2.1.
- C. The only upgrade method that will be supported is using NIM because the current VIOS is lower than V1.3.
- D. VIOS V2.1 requires AIX clients to be running AIX V6.1 at a minimum.

Answer: B

Explanation:

QUESTION NO: 16

An architect is looking at the implications of uncapped weights for a new POWER7 system. The system will consist of four uncapped logical partitions with the following weightings:

LPAR Weight

- | | |
|---|-----|
| A | 125 |
| B | 150 |
| C | 100 |
| D | 125 |

Assuming all partitions have equal entitlement and virtual processor configurations in the partition profiles, and request additional resources from the shared processor pool over a period of 1000 cycles, how many cycles will be allocated to LPAR B?

- A. 150
- B. 250
- C. 300
- D. 1000

Answer: C

Explanation:

QUESTION NO: 17

Which interface must be used to provide virtualization of tape library devices to client LPARs?

- A. USB
- B. LTO
- C. Virtual SCSI
- D. Virtual Fibre Channel

Answer: D

Explanation:

QUESTION NO: 18

An administrator is creating several LPARs on a new Power Systems server. The administrator knows that Live Partition Mobility (LPM) will be used to distribute the workload between this new machine and several others in the environment. In addition to ensuring all storage is allocated through Virtual IO servers, what else must the administrator take into consideration when creating the new LPARs?

- A. LPAR names in the environment must be unique.
- B. Redundant error path reporting must be configured.
- C. Only LPARs belonging to the same workload group can be moved between servers.
- D. The Virtual IO server code level must be the same across all servers.

Answer: A

Explanation:

QUESTION NO: 19

An administrator is performing a Live Partition Mobility (LPM) operation between two servers managed by different HMCs. While monitoring the performance of the partition, the virtual console window suddenly closes. What is the most likely cause?

- A. The virtual console is controlled by the HMC and closes when the second takes control of the partition.
- B. The virtual console is a connection to the FSP of the physical server and closes when the LPAR migrates.
- C. The SSH keys have not been exchanged between HMCs.
- D. The FSP has the MAC address for the first HMC cached in NVRAM.

Answer: B

Explanation:

QUESTION NO: 20

An administrator is designing a new system for their existing batch environment. The current system is a POWER5 570 with 16 cores and 128GB of RAM with a single LPAR running AIX 5.3. It takes 12 hours to run their large batch job which is heavily CPU bound on 4 the available CPUs. The new system will be a Power 770 with 16 cores, 128GB of RAM and the LPAR will run AIX 6.1. What should be done to maximize the batch performance?

- A. Activate TurboCore mode during batch processing
- B. Disable Simultaneous Multi-threading
- C. Disable Multiple Shared Processor Pools
- D. Set the processor compatibility mode to POWER7

Answer: B

Explanation:

QUESTION NO: 21

A second virtual disk has been added to a SuSE Linux LPAR on the existing vhost0 adapter. What must be done for this disk to be recognized on the Linux LPAR?

- A. /usr/bin/cfgmgr

- B. `/bin/kpartx -a -v /dev/sdb`
- C. `echo "- -" > /sys/class/scsi_host/host0/scan`
- D. `/usr/bin/rescan-scsi-bus`

Answer: C

Explanation:

QUESTION NO: 22

An architect is designing a new virtualized POWER7 system. The system will have a number of AIX and Linux LPARs and will be deployed with a logical memory block size of 16MB. Which of the following could be used to determine the amount of memory used by the Hypervisor?

- A. System Planning Tool.
- B. System Configurator.
- C. Facts and Features Guide.
- D. LPAR Validation Tool.

Answer: A

Explanation:

QUESTION NO: 23

An administrator uses DLPAR on an active LPAR to add an additional VLAN ID into an existing virtual adapter used by the SEA. The operation fails with error HSC01221 stating that the Modification of Virtual I/O resources failed. The server being modified is a POWER6 595 running firmware version EH350_071. The VIO Server is at version 2.2.0.10 FP24. Based on this information, what is the most likely cause for this error?

- A. The system firmware needs to be updated to EH350_085.
- B. The VIO Server needs to be updated to 2.2.0.10 FP 24 SP1.
- C. Dynamic addition of VLAN IDs to an existing virtual adapter are only supported at AIX 7.1.
- D. Dynamic addition of VLAN IDs to an existing virtual adapter are only supported on POWER7 hardware.

Answer: B

Explanation:

QUESTION NO: 24

An administrator would like to install a new Fix Pack on an existing VIO server. The Fix Pack has been mounted using NFS on /mnt. Which command should the administrator use to achieve this?

- A. installios -update_all -dev /mnt
- B. iosinst -update -install -accept -dev /mnt
- C. updateios -dev /mnt -accept -install
- D. geninstall -u -ac -d /mnt -f all

Answer: C

Explanation:

QUESTION NO: 25

A user has accidentally deleted critical system files on an LPAR. Storage on the LPAR is provided using both vSCSI and NPIV. The administrator is preparing to reinstall the LPAR, but has concerns about the existing NPIV configuration. Which statement concerning WWPNs is correct?

- A. During the reinstall of AIX, the HMC will assign new WWPNs to the adapters.
- B. Assigned WWPNs are regenerated during a reinstall for boot devices, but preserved for secondary storage.
- C. Providing the configuration of the virtual Fibre Channel adapters remains unchanged in the LPAR profile, the existing WWPNs are preserved.
- D. The virtual_fc_adapters LPAR attribute must be verified prior to the reinstall and suitably updated to preserve all existing WWPNs.

Answer: C

Explanation:

QUESTION NO: 26

Which is the lowest edition of PowerVM that will permit redundant VIO Servers?

- A. PowerVM Basic Edition
- B. PowerVM Express Edition
- C. PowerVM Standard Edition
- D. PowerVM Enterprise Edition

Answer: C

Explanation:

QUESTION NO: 27

A virtual adapter with IEEE 802.1Q enabled for multiple VLANs has been created on a new VIO Server. This has been turned into a Shared Ethernet Adapter (SEA) but the SEA is not passing the tagged traffic to the outside world. Which of the following actions, when taken on the VIO Server, will fix the issue?

- A. Set the trunk priority is to 1.
- B. `mkvdev -vlan ent[Ethernet device] -tagid [VLAN ID]` for each PVID.
- C. Re-create the SEA with `-vlan [VLAN ID]` option.
- D. `chvdev -sea en[Ethernet interface] -vlanid [VLAN ID]`.

Answer: B

Explanation:

QUESTION NO: 28

An administrator has installed a new client partition and has used vSCSI to provide the disk for rootvg. The rootvg consists of one single disk, hdisk0, which is provided using a single SAN device presented to a dual VIO server configuration. The client virtual SCSI adapters are vscsi0 and vscsi1. The administrator would like to prioritize I/O traffic for vscsi0. Running which command will achieve this?

- A. `chdev`
- B. `chvpath`
- C. `chpath`
- D. `chattr`

Answer: C

Explanation:

QUESTION NO: 29

An administrator has a hardware environment including POWER5, POWER6 and POWER7 architectures. A requirement exists to improve availability across all platforms without additional costs. What technology should be considered?

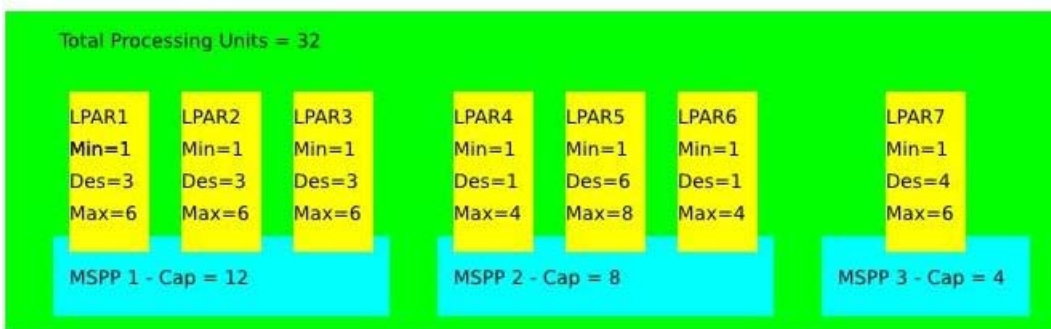
- A. Live Application Mobility
- B. Live Partition Mobility
- C. Multiple Shared Storage Pools
- D. Resource Monitoring and Control

Answer: A

Explanation:

QUESTION NO: 30

On the following system which uses Multiple Shared Processor Pools (MSPP):



LPAR6 requires two additional processing units. Which of the following will accomplish this?

- A. DLPAR move two processing units from LPAR2 to LPAR6.
- B. Decrease MSPP1 by two processing units.DLPAR add two processing units to LPAR6.
- C. Move LPAR6 to MSPP3.DLPAR add two processing units to LPAR6.
- D. Add two processing units to MSPP2.DLPAR add two processing units to LPAR6.

Answer: D

Explanation:

QUESTION NO: 31

A new Power 750 machine is being prepared for use. When the administrator tries to assign a new LPAR to a secondary shared processor pool, the HMC displays the following error:"This operation is not allowed because the partition is using dedicated processors."What is the most likely cause for the error?

- A. The defined LPAR has yet to be activated.

- B. The defined LPAR has been set to the wrong Processor compatibility mode.
- C. The defined LPAR has the "Allow when partition is active" option checked.
- D. The defined LPAR has the "Allow when partition is inactive" option unchecked.

Answer: A

Explanation:

QUESTION NO: 32

An administrator has written a script to back up user-defined disk structures on a VIO server. The script makes a list of non-rootvg structures and then uses the savevgstruct command to backup the list of structures. While testing the script, the administrator finds that the disk structures are not all being successfully backed up. What is the most likely cause?

- A. The disk structure is currently offline. It needs to be online for the savevgstruct command to succeed.
- B. The disk structure is currently busy. It needs to be queisced to remove any file locks.
- C. The disk structure is a Virtual Media Repository. These are backed up using the backupios command.
- D. The disk structure is a Shared Storage Pool. These are backed up with the viosbk command.

Answer: A

Explanation:

QUESTION NO: 33

An architect requires Active Memory Sharing (AMS) to be implemented for a new AIX environment. Which of the following are minimum requirements in order to implement AMS?

- A. PowerVM Standard Edition, HMC version 7.3.5, VIO Server version 2.1 FP21
- B. PowerVM Enterprise Edition. POWER6 Hardware, AIX 6.1 TL3
- C. PowerVM Standard Edition, POWER7 Hardware, HMC version 7.7.1
- D. PowerVM Enterprise Edition, AIX 6.1 TL4, redundant storage

Answer: B

Explanation:

QUESTION NO: 34

Which of the following statements is true when considering Active Memory Sharing?

- A. Only one paging VIO server partition is supported in each system.
- B. Only physical hard disks are supported as paging devices.
- C. Each paging VIO server partition must have a single dedicated paging device.
- D. Every partition in the shared memory pool requires its own dedicated paging device.

Answer: B

Explanation:

QUESTION NO: 35

A systems service processor is being connected to a redundant HMC. Which of the following is required to support DHCP server on dual HMCs?

- A. The two HMCs must be on different subnets.
- B. The redundant HMC must have the 'Redundant DHCP Range' check box selected on ethernet ent0 configuration.
- C. Both HMCs must be running RMC on a shared private network.
- D. The first HMC must be set as primary DHCP range.

Answer: A

Explanation:

QUESTION NO: 36

A VIO server provides a virtual Fibre Channel adapter to each of 2 LPARs. The HBA has recently been replaced on the VIO server. After the VIO server was rebooted, the clients LPARs were also rebooted. The LUNs are now showing as "Defined" instead of "Available". What is the cause?

- A. The HBA created new WWPNs on the virtual Fibre Channel adapters.
- B. The HBA requires an initial configuration to be performed.
- C. The client virtual Fibre Channel adapters were configured via DLPAR.
- D. The client virtual Fibre Channel needs a map to the new WWPNs.

Answer: C

Explanation:

QUESTION NO: 37

While reactivating client LPARs following a scheduled power down, some LPARs have lost visibility to their NPIV-allocated SAN LUNs. On investigation it appears the WWNs have changed on the problem LPARs. What is the most likely cause for the change in WWN?

- A. The option to randomly assign WWNs for security reasons has been selected.
- B. The NPIV adapters on the VIOS LPARs were not tagged as being "required for partition activation."
- C. The virtual Fibre Channel client adapters were dynamically allocated to the LPARs before being added to the partition profile.
- D. The WWNs will have changed due to the recycle of the Hypervisor. The chsyscfg -r command should be used to recover the previously allocated WWN.

Answer: C

Explanation:

QUESTION NO: 38

What Shared Ethernet Adapter environment can be implemented to prevent client network outages when the Virtual I/O server needs to be shut down for maintenance?

- A. Shared Ethernet Adapter failover
- B. Link Aggregation on the Virtual I/O Server
- C. Etherchannel on the Virtual I/O Server
- D. Live Partition Mobility

Answer: D

Explanation:

QUESTION NO: 39

An administrator is planning to deploy multiple AIX LPARs onto a Power 770. These LPARs will be served with Virtual SCSI storage from a pair of VIO Servers (VIOS). What consideration should be considered with regard to VIOS configuration to ensure suitable performance of the virtualized storage?

- A. Allocate sufficient CPU processing capacity.
- B. Provide sufficient memory allocation.
- C. Assign each virtual disk on a unique virtual SCSI adapter.
- D. Set the hcheck_mode attribute on the vSCSI disks.

Answer: A

Explanation:

QUESTION NO: 40

A customer has a VIO server which runs on internal disks. It can not support an outage during normal business hours. Which action can the administrator take that will support this requirement AND improve overall system availability?

- A. Use the -P flag when setting disk quorum.
- B. Use the -D flag when creating a backup device.
- C. Use the -defer option when mirroring the rootvg.
- D. Use the -immed option when creating a hot spare disk.

Answer: C

Explanation:

QUESTION NO: 41

An administrator is trying to perform Live Partition Mobility (LPM) between physical systems managed by the same HMC. The VIO Servers (VIOS) on each physical system are connected to the same SAN. The client LPARs will use virtual SCSI (vSCSI) disks. The SCSI adapter slot numbers are between 11 and 20. Each client LPAR has a unique name. The network used by the client LPARs use Logical Host Ethernet adapters (LHEA). The PowerVM Enterprise edition is being used. No EtherChannel has been configured. Why are LPM activities failing?

- A. This LHEA configuration is not supported for LPM.
- B. The SCSI adapter slot numbers are too high.
- C. Multiple MSP (mover service partitions) were configured.
- D. The ssh keys have not been exchanged between the two VIO servers.

Answer: A

Explanation:

QUESTION NO: 42

A partition that uses an LHEA for network connectivity needs to be moved to another managed system. The administrator has the LHEA configured in an Etherchannel with a virtual Ethernet

adapter as the backup adapter. When attempting to perform the migration using the Migration Wizard, it fails. What is necessary for the migration to be successful?

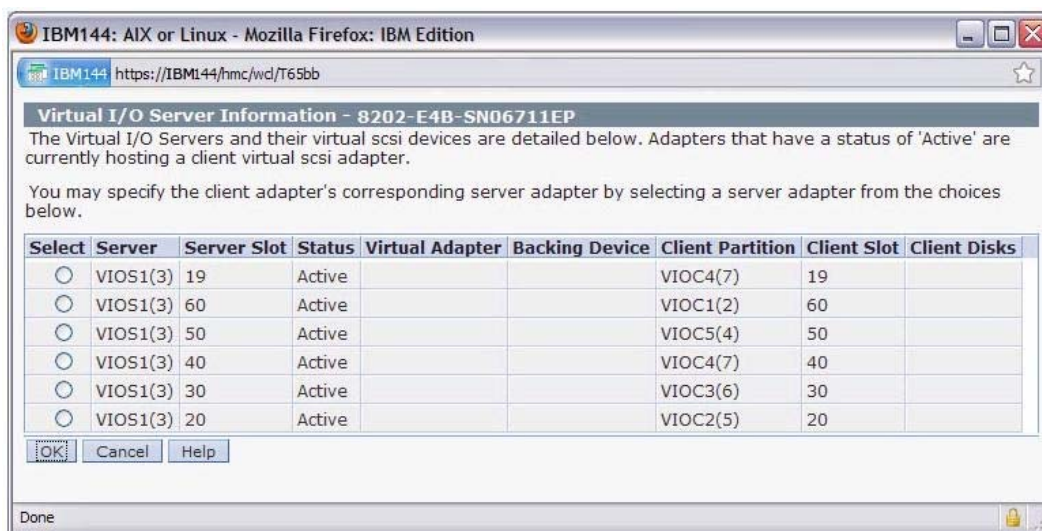
- A. The HMC command line interface needs to be used to perform the migration.
- B. The migration must be initiated from the operating systems of the mobile partition.
- C. The LHEA must be removed from the Etherchannel before the migration.
- D. The destination server does not have an LHEA available for the migration.

Answer: B

Explanation:

QUESTION NO: 43

The VIO servers in a Power Systems server have already been installed and the LUNs have been mapped to their vhosts as virtual scsi disks. When defining a client LPAR, the administrator wants to map a virtual client SCSI adapter to a server adapter in one of the VIO servers.



In the "Create Virtual SCSI Adapter" dialog box below, why are the fields for "Backing Device" and "Client Disks" empty?

- A. The information becomes available when the clients are booted.
- B. There needs to be an RMC connection between the HMC and the VIO servers.
- C. This information is only available when using internal disks.
- D. PowerVM Enterprise Edition is required for this feature .

Answer: A

Explanation:

QUESTION NO: 44

Which of the following are advantages of configuring a management IP address on a VIO Server?

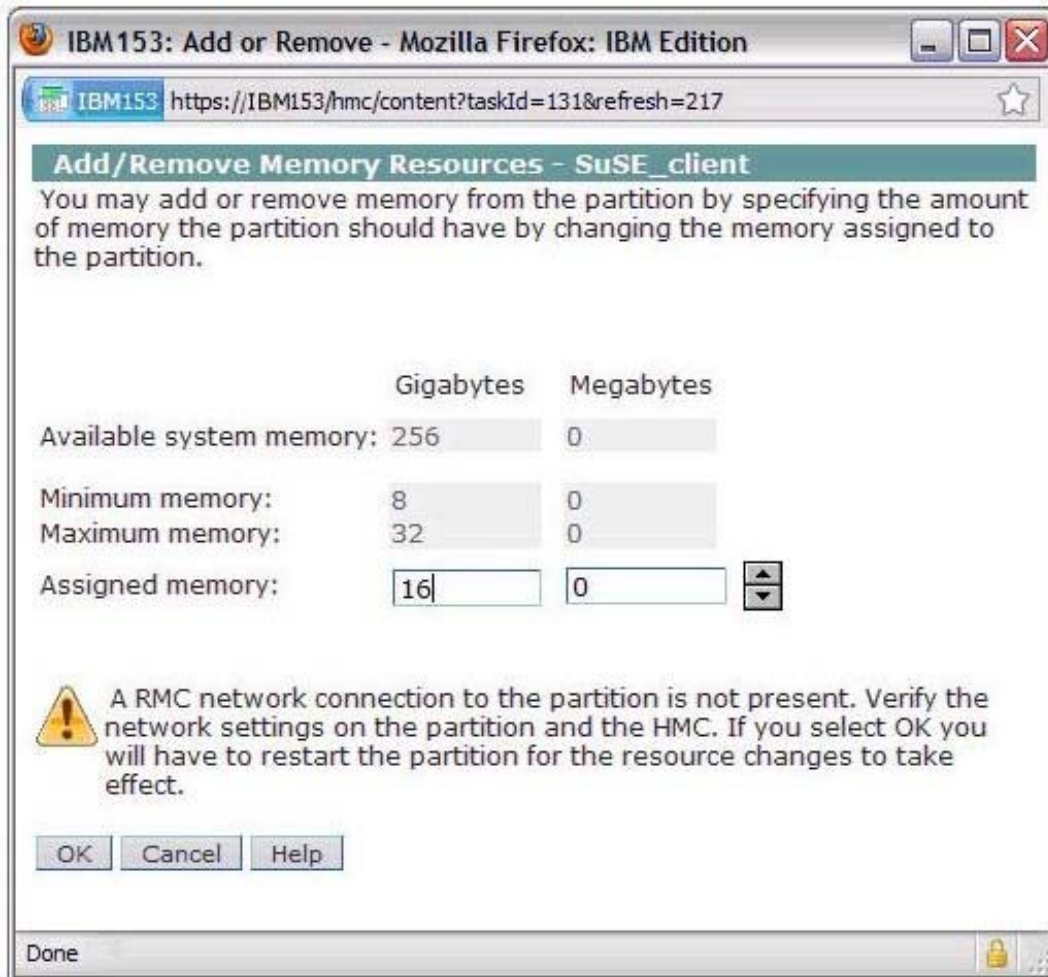
- A.** Allows trunking on the SEA failoverAllows DLPAR of CPU and MemoryAllows network based OS upgrades
- B.** Allows the VIO Server to be used as an MSPAllows VIO Server management without access to an HMCAllows browser-based access to ASMI
- C.** Allows DLPARAllows network based OS upgradesAllows VIO Server management without access to an HMC
- D.** Allows a control channel to be used on SEAsAllows for the use of Live Partition MobilityAllows for security inside a hostile network

Answer: C

Explanation:

QUESTION NO: 45

An administrator has installed a Linux LPAR using virtual storage and virtual networking on a POWER7 system and is attempting to DLPAR additional memory into the LPAR. They see the following error message during the DLPAR operation.



Which action will resolve this issue?

- A. Add the HMC to the /etc/hosts file.
- B. Configure a network on the same subnet on the HMC.
- C. Install the IBM Installation Toolkit for Linux
- D. Upgrade the version on Linux to support memory DLPAR.

Answer: C

Explanation:

QUESTION NO: 46

When planning for virtual disk redundancy on an AIX LPAR, which solution would provide the highest availability?

- A. N_Port ID Virtualization (NPIV)
- B. MPIO through redundant VIO Servers
- C. Disk mirroring on the VIO Servers providing the virtual disks

D. Distinct vhost provided for each disk allocated by the VIO Servers

Answer: B

Explanation:

QUESTION NO: 47

Which of the following provides resilience when dynamically allocating CPU and memory resources on IBM Power Systems servers?

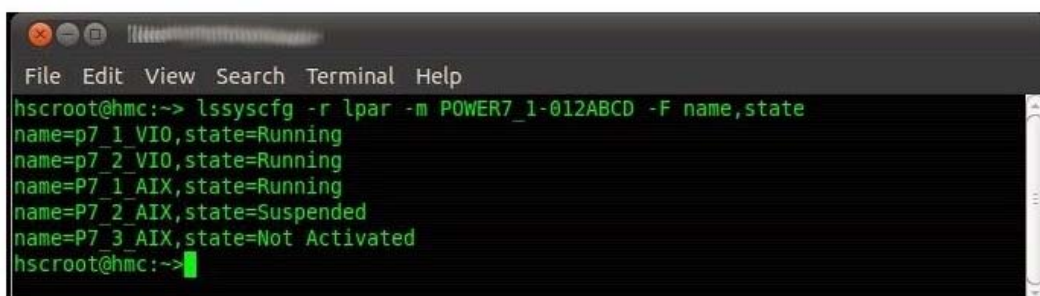
- A. PowerHA System Mirror for Virtualization
- B. PowerVM Enterprise Extended Edition
- C. Redundant VIO server partitions
- D. Redundant Hardware Management Consoles

Answer: D

Explanation:

QUESTION NO: 48

A VIO server administrator is configuring MPIO-based storage for a new LPAR named P7_3_AIX. The administrator runs the `lspv -free` command and sees 4 disks free. The `lsmmap -all` command confirms that the disks are free. A check of the list of LPARs shows the following:



```
File Edit View Search Terminal Help
hscroot@hmc:~> lssyscfg -r lpar -m POWER7_1-012ABCD -F name,state
name=p7_1_VIO,state=Running
name=p7_2_VIO,state=Running
name=P7_1_AIX,state=Running
name=P7_2_AIX,state=Suspended
name=P7_3_AIX,state=Not Activated
hscroot@hmc:~>
```

In order to avoid problems, what else should be verified before mapping storage to the new LPAR?

- A. If the free disks are allocated to P7_2_AIX
- B. That the free disks are MPIO capable
- C. If the free disks are allocated to P7_3_AIX
- D. That the free disks are allocated to a shared storage pool

Answer: D

Explanation:

QUESTION NO: 49

An administrator manages a Power 750 server for application development testing. Full system environments need to be deployed quickly to perform functional application testing. What is the fastest method for the administrator to deploy new AIX environments for the testing staff?

- A. Install a VIO server and install testing LPARs utilizing virtualized network and disks.
- B. Install a NIM server LPAR on the system and perform installations on testing LPARs through Virtual Ethernet adapters.
- C. Use alt_disk_install to maintain a new image on alternate disks on testing LPARs.
- D. Create a global LPAR and create test environments using WPAR.

Answer: D

Explanation:

QUESTION NO: 50

During the validation of a planned partition migration between managed servers, the following error message is displayed: HSCLA297 The DLPAR Resource Manager (DRM) capability bits 0x0 for mover service partition (MSP) VIOS indicate that partition mobility functions are not supported on the partition. What is the most likely cause of this error?

- A. An RMC error has occurred on one of the VIOS partitions.
- B. The mobile partition has an HEA logical port configured.
- C. There is a mismatch in VIO Server versions between the two systems.
- D. The network connection to the mobile partition is not working.

Answer: A

Explanation:

QUESTION NO: 51

A customer has two Power 770 systems in their environment. What is the minimum PowerVM version that will enable a flexible environment that can allow for seamless hardware maintenance?

- A. PowerVM Enterprise Edition
- B. PowerVM Enhanced Edition
- C. PowerVM Standard Edition
- D. PowerVM Express Edition

Answer: A

Explanation:

QUESTION NO: 52

An administrator has defined a new virtual SCSI server device, vhost0, to support a client LPAR on a new system. A disk, hdisk2, has been presented from a SAN to the VIO server. The administrator attempts to map the disk on the VIO server using the following command. `mkvdev -vadapter vhost0 -dev hdisk2 -vdev client_rootvg`The error 'client_rootvg" is not a valid backing device' was received. Which of the following explains the error?

- A. The disk is already allocated to another VIO server
- B. The virtual target device "client_rootvg" is already in use.
- C. The disk is formatted at 522 bytes/block.
- D. The -dev and -vdev flags have the incorrect parameters.

Answer: D

Explanation:

QUESTION NO: 53

A single port on a physical Ethernet adapter (ent0) has failed on a VIO Server. The network devices are as follows:

```
ent0  Available  2-Port 10/100/1000 Base-TX PCI-X Adapter (1410890:
ent1  Available  2-Port 10/100/1000 Base-TX PCI-X Adapter (1410890:
ent2  Available  Virtual I/O Ethernet Adapter (I-lan)
ent3  Available  Shared Ethernet Adapter
```

When using the `diagmenu` command to deconfigure the physical adapter, an error occurs saying the adapter is in use.

What is the correct sequence to deconfigure the physical adapter?

- A. Deconfigure ent3 first, then deconfigure ent0, ent1, ent2.
- B. Deconfigure ent3 first, then deconfigure ent0, ent1
- C. Deconfigure ent3 first, then deconfigure only ent0
- D. Deconfigure ent3 first, then deconfigure ent0, ent2.

Answer: B

Explanation:

QUESTION NO: 54

An administrator would like to perform a Live Partition Mobility (LPM) operation between two systems. The source system has been configured with a single VIO Server (VIOS) partition and the destination system has been configured with dual VIO server partitions. What must be considered when planning for LPM?

- A. A second VIO Server partition must be configured on the source system to allow for LPM.
- B. An LPAR must be configured on the target system before the LPM operation is invoked.
- C. Device-level virtualization provided by the single VIOS of the source system must be matched by both of the dual VIOS on the target system.
- D. Access to all the disk data must be completely provided by at least one of the destination VIO Server partitions.

Answer: D

Explanation:

QUESTION NO: 55

A customer will be ordering a number of small POWER7 machines which require that PCIe cards be placed in a particular configuration. These will be shipped to small customer branches where technical resource is limited. Which feature will direct IBM manufacturing to place PCIe cards as required?

- A. Customer Specified Placement (CSP)
- B. Customer Certified Installation (CCI)
- C. Approved Hardware Configuration (AHC)
- D. Build to Order (BtO)

Answer: A

Explanation:

QUESTION NO: 56

After opening a virtual terminal to a running AIX LPAR to perform maintenance, an administrator does not receive a login prompt. How can the administrator get the login prompt?

- A. Use smitty tty on the LPAR and enable logins.
- B. Ensure the "Remote Virtual Terminal" option is selected on the HMC.
- C. Set the console option on the LPAR in the SMS menus.
- D. Ensure the "Remote Operation" option is selected on the HMC.

Answer: A

Explanation:

QUESTION NO: 57

An administrator is attempting to install a VIO server on a Power 750, but is unable to connect remotely to the console session. How can this be resolved?

- A. Select the option to enable remote operation
- B. Select the option to enable remote virtual terminal connections.
- C. Use the vtmenu command to enable the virtual connection for the server.
- D. Ensure the remote console daemon is running on the host.

Answer: B

Explanation:

QUESTION NO: 58

During the migration of a partition that uses Active Memory Sharing (AMS) the following error is received:

HSCLA304: A suitable shared memory pool for the mobile partitions was not found on the destination managed system...

Which of the following is the most probable cause?

- A. The source is using redundant VIO server paging partitions and the destination has only one paging VIO server partition in the shared memory pool.
- B. The source and destination servers have different Logical Memory Block sizes.
- C. The shared memory pool on the destination is larger than that specified on the source.

D. The available paging devices on the destination are all marked as redundant capable.

Answer: B

Explanation:

QUESTION NO: 59

When trying to suspend an LPAR, the process fails during the validation stage. Which of the following must also be correctly configured in order for this process to successfully complete?

- A. Reserved Storage Device Pool
- B. Dual VIO servers
- C. PowerVM Express Edition
- D. N_Port ID Virtualization

Answer: A

Explanation:

QUESTION NO: 60

Compared to the backup strategy for a VIO Server, what additional element needs to be backed up in an IVM deployment?

- A. LPAR profile data
- B. LHEA port allocation
- C. Storage pool definitions
- D. PowerVM Edition keys

Answer: A

Explanation:

QUESTION NO: 61

The administrator of a Power 740 is attempting to define an IVE port as promiscuous for a new VIO server. All LPARs using the IVE port have been shut down, but the administrator still receives a message stating that the VIO server cannot be designated as the promiscuous LPAR. What steps can be performed to enable the IVE port as promiscuous for the VIO server?

- A. Power off the Managed System and reactivate it.
- B. Remove the IVE configuration from the existing LPARs and reactivate them.
- C. Set the promiscuous setting to "none" and save the setting before attempting the operation again.
- D. Change the MCS value from 16 to a lower value.

Answer: B

Explanation:

QUESTION NO: 62

An administrator is preparing an LPAR for Live Partition Mobility (LPM) and needs to move its storage to external storage. After creating the virtual Fibre Channel adapter on the LPAR, the zoning between the LPAR and the storage is established. What needs to be considered when zoning the storage?

- A. Both WWPNs need to be zoned for the same LUNs for LPM to function properly.
- B. The second WWPN should be zoned to a redundant switch for resilience.
- C. The two WWPNs can be used to zone different LUNs to the same server.
- D. The second WWPN must be zoned if multiple paths are being defined.

Answer: A

Explanation:

QUESTION NO: 63

When planning a new Power 770 system, how can an administrator ensure that a database LPAR is prevented from sharing processors with any Multiple Shared-Processor Pools, regardless of whether the LPAR is active?

- A. Unselect the processor sharing options in the LPAR profile.
- B. Define the LPAR with a unique shared processor pool.
- C. Set the processor compatibility mode to POWER6.
- D. Set the processor sharing mode for all LPARs to capped.

Answer: A

Explanation:

QUESTION NO: 64

An AIX LPAR has a disk drive known as hdisk17. The administrator would like to change the name of the disk to redolog0. Which command will achieve this?

- A. `rendev -l hdisk17 -n redolog0`
- B. `mv /dev/hdisk17 /dev/redolog0`
- C. `chdisk -dev hdisk17 -id redolog0`
- D. `chdev -l hdisk17 -a name=redolog0`

Answer: A

Explanation:

QUESTION NO: 65

What is a major benefit for using LHEA instead of an SEA?

- A. 802.11Q support
- B. 64 MAC addresses
- C. Reduced networking configuration
- D. Logical port throttling

Answer: C

Explanation:

QUESTION NO: 66

What is the maximum number of clients which can be configured to use a single port on a Host Ethernet Adapter?

- A. 2
- B. 4
- C. 8
- D. 16

Answer: D

Explanation:

QUESTION NO: 67

An administrator is designing a new system. Redundancy is critical, and cost must be kept as low as possible.

The system planned is a Power 770 with 2 enclosures, each with a 10Gb IVE. It will support 6 dedicated production LPARs, 8 development LPARs, and 2 VIO Servers.

Production and development networks must be separate from each other.

Which of the following network solutions supports the requirements above?

- A.** Utilize the Integrated Virtual Ethernet adapter in each enclosure
Allocate 1 logical port from each IVE in each enclosure to each LPAR and VIO Server
Configure 802.1Q on each LPAR
- B.** Allocate Integrated Virtual Ethernet adapters ports to the VIO Servers
Configure a Shared Ethernet Adapter for production and another for development
Allocate virtual network devices to LPARs
- C.** Use dedicated Ethernet cards in each Production LPAR using Ether channel
Allocate two dedicated Ethernet cards to the VIO Servers
Create a SEA and use for development LPARs
- D.** Run dedicated adapters in the VIO Servers
Configure a Shared Ethernet Adapter for production and another for development
Allocate virtual network devices to LPARs.

Answer: A

Explanation:

QUESTION NO: 68

A company needs to implement a virtual environment on a Power 770 server using a Virtual I/O Server and a large number of clients. What network solution can be implemented on the Virtual I/O Server to maximize bandwidth for the clients?

- A.** Link Aggregation
- B.** Network Interface Backup
- C.** Shared Ethernet Adapter failover
- D.** VLAN mapping

Answer: A

Explanation:

QUESTION NO: 69

An administrator must create several production and development LPARs on a new Power 770 server. Processor requirements for the development LPARs change frequently.

Which configuration will isolate the production LPARs from changes in processing requirements for the development LPARs?

A. Assign the production partitions to a Shared Processor Pool 2 with the Maximum Pool Capacity equal to the Entitled Pool Capacity.

Assign the development partitions to the default Shared Processor Pool 1.

B. Assign the development partitions to Shared Processor Pool 1 with the Maximum Pool Capacity equal to the Entitled Pool Capacity.

Assign the production partitions to the default Shared Processor Pool 0.

C. Assign the production partitions to Shared Processor Pool 1 with the Maximum Pool Capacity equal to the Entitled Pool Capacity.

Assign the development partitions to Shared Processor Pool 2 with the Maximum Pool Capacity equal to the Entitled Pool Capacity.

D. Assign the production partitions to Shared Processor Pool 1 with the Maximum Pool Capacity higher than the Entitled Pool Capacity.

Assign the development partitions to Shared Processor Pool 2 with the Maximum Pool Capacity higher than the Entitled Pool Capacity.

Answer: C

Explanation:

QUESTION NO: 70

A customer is planning to migrate an existing AIX 7 environment from POWER5 hardware to POWER7. The existing deployment consists of multiple machines, each hosting many LPARs. Due to software licensing constraints, the new environment must maintain the same number of logical CPUs. The pmcycles command reports the following on an LPAR on the POWER5 environment:

```
$ pmcycles -m
```

```
CPU 0 runs at 2198 MHz
```

```
CPU 1 runs at 2198 MHz
```

```
CPU 2 runs at 2198 MHz
```

```
CPU 3 runs at 2198 MHz
```

CPU 4 runs at 2198 MHz

CPU 5 runs at 2198 MHz

CPU 6 runs at 2198 MHz

CPU 7 runs at 2198 MHz

How many virtual CPUs should be assigned to the destination LPAR on the POWER7 environment?

- A. 1
- B. 2
- C. 4
- D. 8

Answer: B

Explanation:

QUESTION NO: 71

An administrator needs to add additional LPARs to a Power 770 server, but all of the available memory on the system is currently assigned to existing LPARs and is continually utilized.

What solution can the administrator implement on the system to add the LPARs?

- A. Active Memory Expansion
- B. Active Memory Compression
- C. Virtual Memory Management
- D. Weighted Memory Allocation

Answer: A

Explanation:

QUESTION NO: 72

When many LPARs require large quantities of SAN LUNs, what is a benefit of leveraging NPIV over more traditional vSCSI virtualization?

- A. Multipath I/O

- B. Enhanced resilience
- C. Normalized throughput
- D. Reduced administration

Answer: D

Explanation:

QUESTION NO: 73

An architect is designing a new POWER7 implementation consisting of a VIO Server (VIOS) and 6 AIX partitions.

AIX partitions need to occasionally access a tape drive for restoration and backup of application data and tape access will not be required by more than one partition at any time.

The performance of the solution is not critical and the architect wants to keep the cost to a minimum.

Which of the following configurations will address the architect's requirements?

- A.** Allocate a SCSI tape drive to the VIOS partition.
Virtualize connections from the tape drive to the AIX clients using vSCSI.
- B.** Allocate a FC tape drive to the VIOS partition.
Virtualize connections from the tape drive to the AIX clients using NPIV.
- C.** Allocate a USB tape drive to the VIOS partition.
Virtualize connections from the tape drive to the AIX clients using NPIV.
- D.** Allocate a SAS tape drive to the VIOS partition.
Virtualize connections from the tape drive to the AIX clients using vSCSI.

Answer: D

Explanation:

QUESTION NO: 74

An architect has been given the task of incorporating some new Power Systems servers running AIX 7 into an existing data center which is supported by a legacy SAN.

The new servers will need to be connected to the SAN, and the LPARs on the servers will each have access to a Fibre Channel Tape using virtualized devices.

Which action will the architect need to take?

- A. Check that the SAN switches support NPIV.
- B. Use the legacy Fibre Channel device driver in AIX.
- C. Specify that AIX Enterprise Edition must be used.
- D. Put the tape drive into the same zone as the HBA in the VIOS.

Answer: A

Explanation:

QUESTION NO: 75

A client is planning to purchase a Power 770 with 2 enclosures, and needs to have redundancy for multiple LPARs. Which of these solutions provides the most redundancy for the LPARs at least cost?

- A. Assign an IVE logical port from each enclosure to each LPAR. Assign an HBA from each enclosure to each LPAR.
- B. Create two VIO servers assigning IVE and HBA adapters from different enclosures. Assign a virtual Ethernet adapter from each VIO server to Setup NIB on the LPARs. Assign SAN mapped virtual SCSI disks from each VIO server and use MPIO on the LPARS.
- C. Create two VIO servers assigning IVE and HBA adapters from different enclosures. Configure SEA failover on the VIO servers and assign a virtual Ethernet adapter to the LPARs. Assign SAN mapped virtual SCSI disks from each VIO server and use MPIO on the LPARS.
- D. Create a VIO server with two IVE adapters from different enclosures. Configure EtherChannel on the VIO server and assign a virtual Ethernet adapter to the LPARs. Assign an HBA from each enclosure to each LPAR.

Answer: C

Explanation:

QUESTION NO: 76

A new VIO Server environment has been created to support several VIO Clients. Disks have been assigned to both VIO Servers. Which of the following will ensure that disks can be mapped from both VIO Servers?

- A. `chdev -dev sys0 -attr respol=disabled`
- B. `chdev -dev hdiskX -attr reserve_policy=no_reserve`
- C. `chdev -dev hdiskX -attr reservation=no`
- D. `chdev -dev sys0 -attr map=yes`

Answer: B

Explanation:

QUESTION NO: 77

A VIO server has been installed using local storage. Which padmin command will make rootvg redundant?

- A. mirrorvg
- B. mirrorios
- C. mirrorpa
- D. mirroros

Answer: B

Explanation:

QUESTION NO: 78

A client is designing a system to support three 24x7 applications, each in a different environment. The plan is to host these applications on a new POWER7 based server to add to their existing POWER6 servers. Virtual I/O Server will not be used.

The applications have the following OS and processor requirements:

AIX 6.1 with a peak of 2 cores between 10am-2pm

AIX 5.3 with a peak of 2 cores between 5pm-10pm

AIX 5.2 with a peak of 2 cores between 3am-7am

Outside the peak periods, the processor utilization is extremely low.

Which of the following configurations supports the design requirements?

- A. Each applications each needs its own LPAR running native AIX. The LPAR must be running the appropriate version of AIX. The LPARs can all use the shared pool and be uncapped.
- B. The AIX 5.2 can be hosted in a WPAR in an AIX 7.1 LPAR. The AIX 5.3 and AIX 6.1 can each have their own LPAR. All LPARs can use the shared processor pool.

C. A minimum of four processor activations is required.

Two dedicated processors for an AIX 5.2 LPAR.

AIX 5.3 and AIX 6.1 can share 2 processors

D. The LPAR profiles can set the processor mode to POWER6

The AIX 6.1 and AIX 5.3 LPARs can be migrated using Live Partition Mobility.

The AIX 5.2 could only be migrated if it is in a WPAR.

Answer: B

Explanation:

QUESTION NO: 79

A company has a VIO server supporting several infrastructure LPARs, including a NIM server, several NFS servers, and a document management server. Network connectivity is provided from the VIO server through the 1Gb IVE.

The NIM clients frequently receive "NFS Server not responding" errors during installations due to the volume of traffic to the server.

When planning an upgrade to POWER7 hardware, which action will minimize these errors?

A. Share the IVE directly to the LPARs.

B. Implement Jumbo Frames on the 1Gb IVE adapters.

C. Implement a 10Gb network infrastructure.

D. Assign dedicated 1Gb adapters to each LPAR.

Answer: C

Explanation:

QUESTION NO: 80

To prevent frames being dropped as a result of network congestion on high speed links, IBM recommends enabling the use of pause frame on compatible switches and IVE adapters. Which attribute enables pause frames?

A. Flow Control

B. Jumbo Frames

C. Port Group MCS

D. 802.3ad

Answer: A

Explanation:

QUESTION NO: 81

An administrator plans to implement Active Memory Expansion on several LPARs on a Power 770 system. Which tool should be used to determine the recommended LPAR settings for Active Memory Expansion?

- A. amepat
- B. amelpar
- C. amemon
- D. amestat

Answer: A

Explanation:

QUESTION NO: 82

A customer wants to compare a number of models within the POWER7 family to determine which is the best fit for their requirements. What centralized source would allow them to compare availability of Capacity on Demand and supported Hot-plug functions?

- A. POWER7 Press kit
- B. Techline POWER7 compendium
- C. POWER Reference Guide
- D. Facts and Features Report

Answer: D

Explanation:

QUESTION NO: 83

Where can an administrator find the implementation process for configuring a Power 795 to run in TurboCore mode?

- A. IBM Systems Director
- B. IBM InfoCenter
- C. Performance Toolbox for AIX

D. IBM System Planning Tool

Answer: B

Explanation:

QUESTION NO: 84

An architect is planning to use an existing NIM server to back up and restore VIO server partitions. In addition to the backup of the VIO Server (VIOS), what is needed to successfully complete a restore operation?

- A. A backup of the profile data from the VIOS partition.
- B. A valid LPP Source on the NIM partition and an extracted SPOT from the VIOS backup.
- C. A copy of the volume group structures and a list of device mappings from the VIOS partition.
- D. A copy of the VIOS bosinst. data from the VIOS partition.

Answer: C

Explanation:

QUESTION NO: 85

A secondary site is being deployed for application availability and site failover. Servers of identical model and type have been ordered and delivered to the new location.

Additional PowerVM activation keys were obtained for the original location to allow more than 32000 WWNs and enable Active Memory Sharing (AMS).

How can the duplicate systems be updated to enable these additional features?

- A. Create a system plan of the existing configuration and deploy this to the duplicate configuration.
- B. The activation keys must be exported using the PowerVM option within the Capacity On Demand (CoD) panel on the HMC.
- C. Activation keys are generated for a specific system and must be generated for each new server in the failover site.
- D. Contact IBM Support to generate the one-time password required to administer the PowerVM activation keys.

Answer: C

Explanation:

QUESTION NO: 86

A number of POWER7 servers have been ordered to replace an existing infrastructure of POWER4 machines. All existing LPARs will be manually recreated on the new machines, preserving the installed operating systems.

An administrator is planning to attach the POWER7 machines to the subnet, allowing the LPARs to keep their hostname and IP addresses. The NIM server that will be used to restore the LPARs on the new machines allows its clients to initiate NIM client commands.

What needs to be considered to preserve the ability to restore an existing LPAR on the new infrastructure?

- A. LPAR profiles need to be consistent between old and new infrastructure.
- B. The POWER7 machines will be managed by a different HMC.
- C. NIM client CPU ID validation should be disabled before installation on the new hardware.
- D. Prior to migrating to POWER7, the AIX levels of the existing LPARs may need to be updated.

Answer: C

Explanation:

QUESTION NO: 87

An administrator is creating Virtual IO servers (VIOS) on a new POWER7 server, anticipating that Live Partition Mobility (LPM) will be used in the environment. Which action must be taken before LPM operations can begin?

- A. Ensure that AIX Enterprise Edition is loaded on the VIO server partition.
- B. Check the Mover Service Partition box on the partition properties panel on the HMC.
- C. Create the same number of VIOS partitions on all servers.
- D. Configure SEA failover for all VIOS partitions

Answer: B

Explanation:

QUESTION NO: 88

A system with two WPARs is reaching the memory limits imposed on them. Both have been set to a hard limit of 50%.

WPAR1 has a peak from 8am-10am of 70% memory resources

WPAR2 has a peak from 2pm-6pm of 65% memory resources

At peak times the system may kill processes which request more memory, as paging space is exhausted.

What action would allow the two partitions to run efficiently at the same time?

- A. Configure WPAR memory limits using shares, and then set a hard memory limit of 85%.
- B. Use DLPAR to add additional memory to the global environment.
- C. Configure the WPARs to run in passive mode.
- D. Increase paging space by 20% for WPAR1 and 15% for WPAR2.

Answer: A

Explanation:

QUESTION NO: 89

A customer is consolidating two POWER6 595 servers to a single Power 795. The two 595 servers each have 24 active processors and have the following LPARs using dedicated processors, running continuously:

SERVER1		SERVER2	
LPAR1	19 Processors	LPAR4	12 Processors
LPAR2	3 Processors	LPAR5	5 Processors
LPAR3	2 Processors	LPAR6	7 Processors

The new Power 795 system will have two Processor Books (nodes), each with 8 cores activated in all MCMs (Multi Chip Modules).

LPAR1 is in need of more processing power. If all the other LPARs keep their existing Processor allocation, what is the maximum number of processors which can be allocated to LPAR1?

- A. 27
- B. 32
- C. 36
- D. 100

Answer: B

Explanation:

QUESTION NO: 90

A customer is planning to purchase a fully populated Power 795. There are 65 applications which need to run and all need an AIX 7 environment. The architect is considering whether to use an LPAR for each application or to use a single large LPAR and have a WPAR for each application.

What must be considered before creating the environment?

- A. There is a limit of 64 WPARs in any AIX V7 global environment.
- B. An activation key for LPARs with more than 128 processors is required.
- C. There is a limit of 32 Processors in a WPAR.
- D. Multiple IVE adapters are required to support all the partitions.

Answer: B

Explanation:

Topic 2, Volume B

QUESTION NO: 91

Based on the SuSE Linux /proc/ppc64/lparcfg contents on a Linux LPAR, how many processing units are assigned to this system?

```
SuSE11_client:/ # cat /proc/ppc64/lparcfg
```

```
lparcfg 1.8
```

```
serial_number=IBM,02067N14P
```

```
system_type=IBM,8202-E4B
```

```
partition_id=3
```

```
BoundThrds=1
```

```
CapInc=1
```

```
DisWheRotPer=5120000
```

```
MinEntCap=10
```

MinEntCapPerVP=10

MinMem=8192

MinProcs=1

partition_max_entitled_capacity=400

system_potential_processors=8

DesEntCap=200

DesMem=18432

DesProcs=4

DesVarCapWt=0

DedDonMode=0

partition_entitled_capacity=200

group=32771

system_active_processors=8

- A. 1
- B. 2
- C. 4
- D. 8

Answer: B

Explanation:

QUESTION NO: 92

A new NPIV VIO client is being built. How can the administrator log all virtual Fibre Channel adapters into the SAN so the WWPNs are visible for disk mapping?

- A. Boot the LPAR to SMS and run the configure boot device.
- B. Boot the LPAR normally, use the lsmmap -all -npiv command on the VIO server to check it has logged in.
- C. Boot the LPAR into the Open Firmware prompt and run ioinfo command.
- D. Boot the LPAR from a NIM server and access a maintenance shell.

Answer: D

To Read the [Whole Q&As](#), please purchase the [Complete Version](#) from [Our website](#).

Trying our product !


- ★ **100%** Guaranteed Success
- ★ **100%** Money Back Guarantee
- ★ **365 Days** Free Update
- ★ **Instant Download** After Purchase
- ★ **24x7** Customer Support
- ★ Average **99.9%** Success Rate
- ★ More than **69,000** Satisfied Customers Worldwide
- ★ Multi-Platform capabilities - **Windows, Mac, Android, iPhone, iPod, iPad, Kindle**

Need Help

Please provide as much detail as possible so we can best assist you.

To update a previously submitted ticket:



 One Year Free Update <p>Free update is available within One Year after your purchase. After One Year, you will get 50% discounts for updating. And we are proud to boast a 24/7 efficient Customer Support system via Email.</p>	 Money Back Guarantee <p>To ensure that you are spending on quality products, we provide 100% money back guarantee for 30 days from the date of purchase.</p>	 Security & Privacy <p>We respect customer privacy. We use McAfee's security service to provide you with utmost security for your personal information & peace of mind.</p>
---	---	--

[Guarantee & Policy](#) | [Privacy & Policy](#) | [Terms & Conditions](#)

Any charges made through this site will appear as Global Simulators Limited.

All trademarks are the property of their respective owners.

Copyright © 2004-2015, All Rights Reserved.