

100% Money Back
Guarantee

Vendor: IBM

Exam Code: C2180-188

Exam Name: IBM WebSphere Lombardi Edition V7.2
BPM Program Management

Version: Demo

Question No : 1

It is discovered while running Playback 0 that an important but not strictly necessary sub-process was missed in the analysis. How should the program manager recommend handling the missed sub-process?

- A. Redo Playback 0 and include the sub process.
- B. Note the sub-process as a user story and save it for the next release.
- C. Include the sub-process in Playback 1 without validating with the process owner.
- D. Schedule a special iteration and playback to address the sub-process after Playback 3.

Answer: B

Question No : 2

The BPM Program Manager, Process Owner, and Lead Developer are collaborating to define the theme and assign user stories for the next iteration. The team is planning the 7th of 15 iterations in the Release Plan for Release One. The Program Manager displays a Team Velocity chart showing that the Development team has shown significant growth in story points accepted from iterations 1 to 4 and has been leveling off to roughly 200 story points in iterations 5 and 6.

Given there are 9 iterations remaining in the release plan, the Process Owner immediately recognizes there is room for roughly 1800 story points in the remaining time for Release One. However, the backlog contains 2400 story points marked as "high" priority and another 1200 story points marked as "medium" priority. The Process Owner asks to reduce the points assessed to the high priority user stories to bring the total points down to roughly 1800 so as to make them fit in the remaining time. The Program Manager agrees.

What is wrong with this scenario?

- A. This is a conversation for a Release Planning meeting and not during Iteration Planning.
- B. Team Velocity is fixed and changing the method of estimating story points mid-way through a release will not increase the scope of work that can be completed.
- C. Process Owner forgot to include a risk factor of 1.4 that should be applied to 1800 resulting in roughly 2500 story points ($1.4 \times 1800 = 2520$) remaining in the Release. No action should be taken.
- D. Both "high" and "medium" priority stories should be included in the Release Plan meaning all user story points should be reduced by 50% to get all high/medium priority stories to fit in 1800 points remaining ($2400 + 1200 = 3600 : 3600 / 2 = 1800$).

Answer: B

Question No : 3

The BPM program manager and process owner for a new hire onboarding process project need to ensure that the solution developed by the team will be accepted and adopted by the target users. To facilitate this, they decide to:

- A. plan additional playbacks for user screens.
- B. agree with users to postpone the release until every feature is correct.
- C. involve champion SMEs in the discovery and implementation including playbacks.
- D. insist on documentation of all user requirements before having the development team begin work.

Answer: C

Question No : 4

A process owner needs to monitor the performance of multiple processes in the aggregate. What should the program manager plan on developing first to satisfy this requirement?

- A. A report
- B. Scoreboards
- C. Service Level Agreements (SLAs)
- D. Key Performance Indicators (KPIs)

Answer: D

Question No : 5

A program manager is helping an organization optimize their BPM development practices. After talking with the development leads of a number of projects, the program manager suspects that there is a lot of duplication of effort between the projects. What is the first thing the program manager should recommend to reduce this duplication of efforts?

- A. Create an enterprise model.
- B. Create a catalog of service interfaces.

-
- C. Create a common taxonomy of BPM projects.
 - D. Create a centralized repository for all BPM artifacts.

Answer: C

Question No : 6

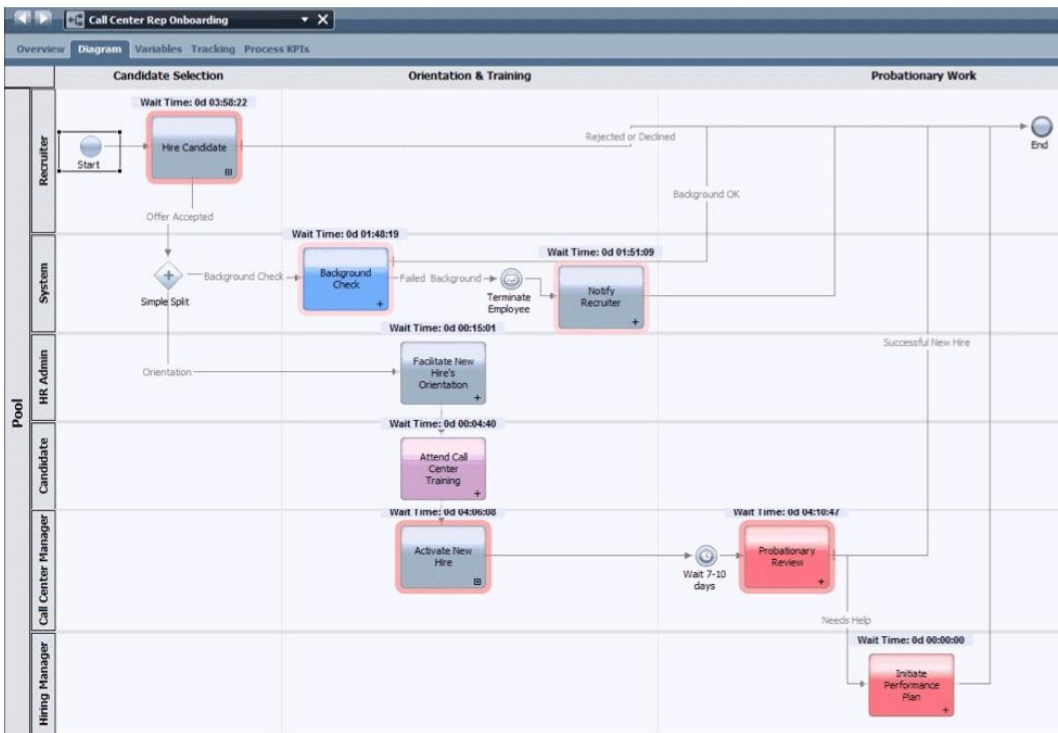
What are the primary challenges that business process governance addresses?

- A. Many processes, many BPM developers, and many BPM assets.
- B. Bad relationships between business and IT, inconsistent results in delivering BPM value, and developing BPM skills within the organization.
- C. Inconsistent decision making in selecting BPM projects, not meeting regulatory compliance goals, and automating labor intensive processes.
- D. Developing BPM skills within the organization, adopting BPM methodology to the organization's needs, and gathering lessons learned from failed BPM projects.

Answer: A

Question No : 7

A company needs to speed up its hiring process. A proposal to accomplish this goal is modeled in the following BPD diagram and run against historical data with the Optimizer. The proposed process no longer waits for the background check to complete before putting the new hire into orientation and training.



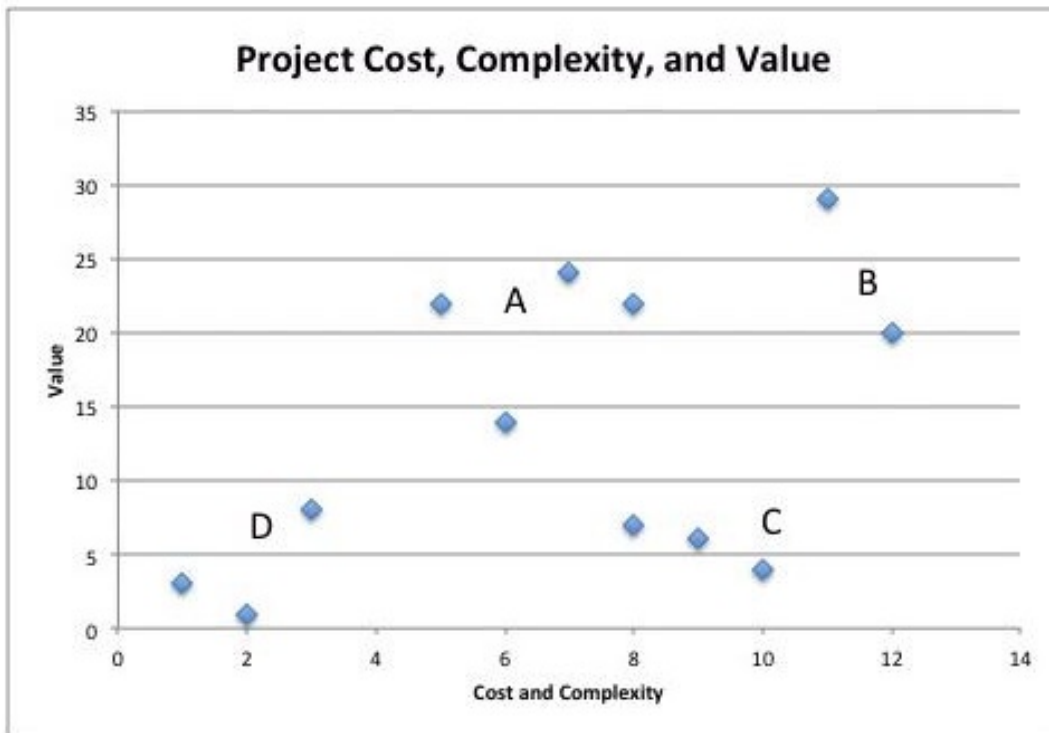
What is the Service Level Agreement (SLA) that is key to optimizing this process?

- A. Wait time on "Background Check".
- B. Total time on "Facilitate New Hire's Orientation".
- C. Percentage of new hires that fail "Background Check".
- D. Percentage of new hires that pass "Probationary Review".

Answer: C

Question No : 8

A program manager is advising a new client who has begun analyzing process projects to determine which ones should be selected for their first BPM projects. The client presents the diagram below visualizing the projects in terms of their cost/complexity and the value to the company.



What should the program manager advise the client?

- A. Consider appetite for BPM as a third axis in this analysis.
- B. Immediately pursue projects in the B quadrant because of their high value.
- C. Redo the business value analysis to ensure customer satisfaction was included.
- D. Remove projects in C quadrant from the inventory because of high complexity and low value.

Answer: A

Question No : 9

A company establishes a BPM Governance Model with an Executive Review Committee and a BPM Project Review Committee. Once the project is initiated it is built out with resources from the Center of Excellence (COE) that design and develop the solution. In the course of working with the BPM Platform and SOA team, the program manager realizes that the project integration costs are greatly increased over the amount of the initial estimate. What should the program manager do?

- A. Press the SOA team to reduce their estimates.
- B. Negotiate a cheaper integration approach with the Executive Steering Committee.
- C. Present the cost over-run to the COE so that additional funds can be allocated.
- D. Present the cost over-run to the BPM Project Review Committee so that the integrations

can be prioritized and placed into at development phase.

Answer: D

Question No : 10

A program manager consults with a client on how to improve their BPM Center of Excellence (COE). The program manager asks what metrics are being used to track the success of the COE. The client offers examples of the metrics that are being collected for several processes related to the cycle time and efficiency. What course of action should the program manager suggest?

- A. Suggest no changes to the metrics.
- B. Suggest that an additional category of metrics for defectrates be collected.
- C. Suggest that the COE should aggregate information on the ROI for each project.
- D. Suggest that greater emphasis be granted to the metrics gathered on cycle time.

Answer: C

Question No : 11

The purpose of a snapshot is to:

- A. use it to record revision history of library items.
- B. record the state of a process application or toolkit at a specific point and time.
- C. allow developers and business users to collaborate on business process definitions.
- D. provide security against unauthorized access and alteration of process applications.

Answer: B

Question No : 12

What WebSphere Lombardi Edition product feature provides developers the ability to reuse, and share assets?

- A. library
- B. toolkits

- C. snapshots
- D. asset tagging

Answer: B

Question No : 13

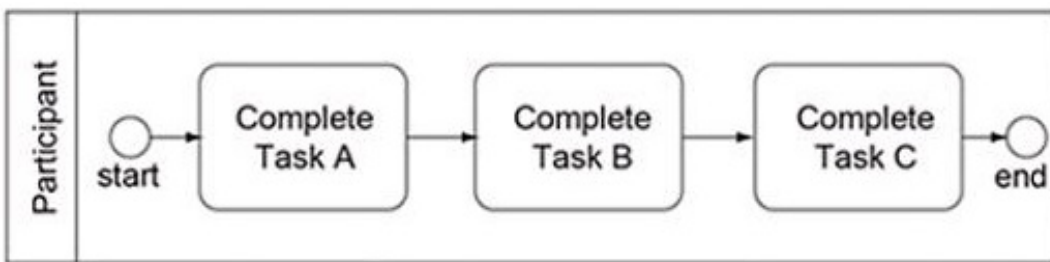
What are the three interfaces provided by the Process Designer?

- A. Designer, Optimizer, Inspector
- B. Designer, Optimizer, Coach Designer
- C. Process Portal, Optimizer, Inspector
- D. Process Portal, Optimizer, Coach Designer

Answer: A

Question No : 14

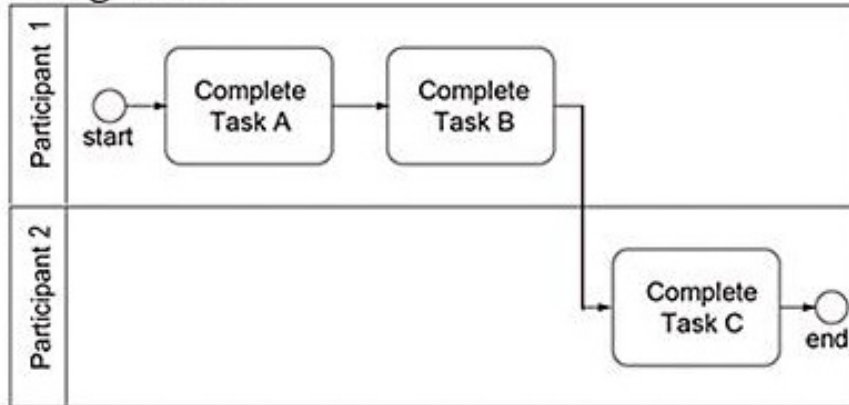
Early in process modeling, the process owner explains how a particular part of the process model diagram below should function. Both Task A and B should be accomplished prior to Task C. Task A and B do not have any specific order in which they must be accomplished. Task C is also completed by a different group than the participant assigned to Task A and B.



Which of the following diagrams implement the scenario according to best practice?

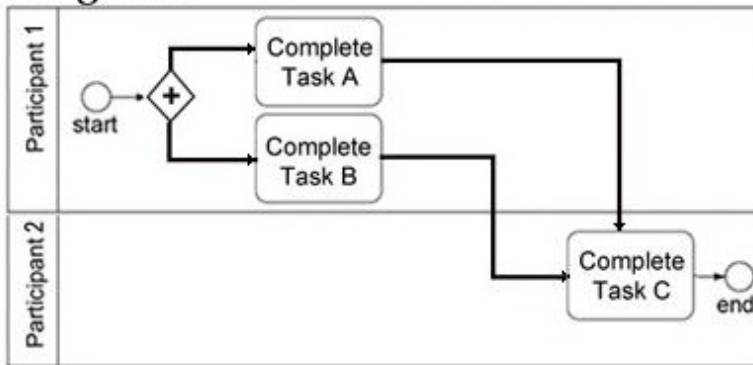
A.

Diagram 1



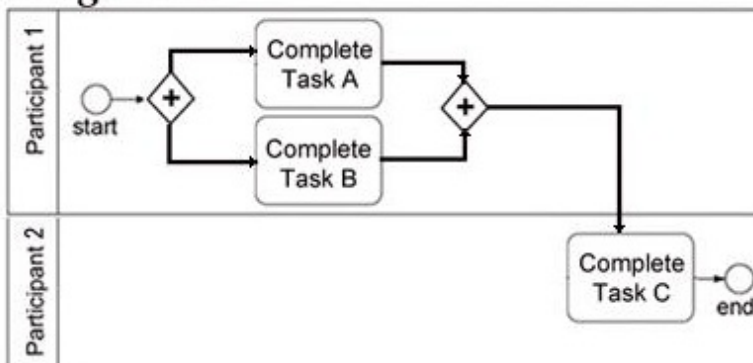
B.

Diagram 2



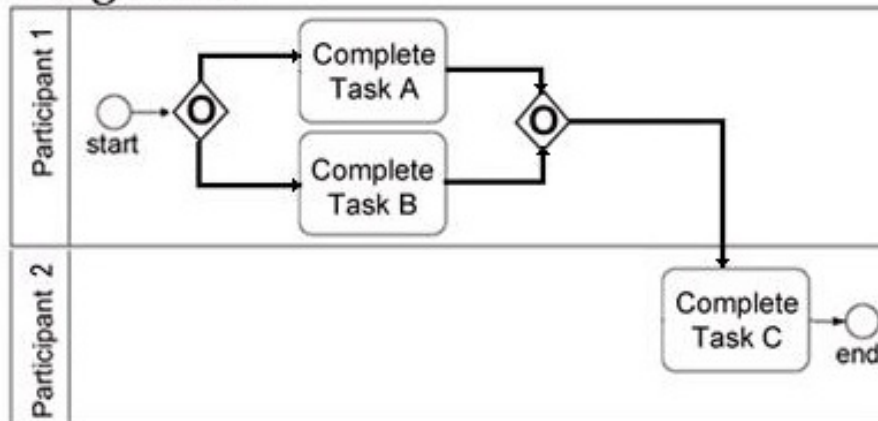
C.

Diagram 3



D.

Diagram 4



- A. Exhibit A
- B. Exhibit B
- C. Exhibit C
- D. ExhibitD

Answer: C

Question No : 15

Within a business process application, access to business data in other systems is accomplished via:

- A. tracking points
- B. integration service.
- C. exposed process variables.
- D. connection lines between Business ProcessDefinition (BPD) activities.

Answer: B

To Read the [Whole Q&As](#), please purchase the [Complete Version](#) from [Our website](#).

Trying our product !


- ★ **100%** Guaranteed Success
- ★ **100%** Money Back Guarantee
- ★ **365 Days** Free Update
- ★ **Instant Download** After Purchase
- ★ **24x7** Customer Support
- ★ Average **99.9%** Success Rate
- ★ More than **69,000** Satisfied Customers Worldwide
- ★ Multi-Platform capabilities - **Windows, Mac, Android, iPhone, iPod, iPad, Kindle**

Need Help

Please provide as much detail as possible so we can best assist you.

To update a previously submitted ticket:



 One Year Free Update <p>Free update is available within One Year after your purchase. After One Year, you will get 50% discounts for updating. And we are proud to boast a 24/7 efficient Customer Support system via Email.</p>	 Money Back Guarantee <p>To ensure that you are spending on quality products, we provide 100% money back guarantee for 30 days from the date of purchase.</p>	 Security & Privacy <p>We respect customer privacy. We use McAfee's security service to provide you with utmost security for your personal information & peace of mind.</p>
---	---	--

[Guarantee & Policy](#) | [Privacy & Policy](#) | [Terms & Conditions](#)

Any charges made through this site will appear as Global Simulators Limited.

All trademarks are the property of their respective owners.

Copyright © 2004-2015, All Rights Reserved.