

OMG-OCUP-100^{Q&As}

OMG-Certified UML Professional Fundamental

Pass OMG OMG-OCUP-100 Exam with 100% Guarantee

Free Download Real Questions & Answers **PDF** and **VCE** file from:

<https://www.certbus.com/omg-ocup-100.html>

100% Passing Guarantee
100% Money Back Assurance

Following Questions and Answers are all new published by OMG
Official Exam Center

- ⚙️ **Instant Download** After Purchase
- ⚙️ **100% Money Back** Guarantee
- ⚙️ **365 Days** Free Update
- ⚙️ **800,000+** Satisfied Customers



QUESTION 1

Constraints are shown using what symbols?

- A. []
- B. ()
- C. { }
- D. ?"
- E. " "

Correct Answer: C

QUESTION 2

Which statement is true of signals? (Choose two)

- A. are synchronous stimuli
- B. are asynchronous stimuli
- C. are handled in a manner determined by the sender
- D. are handled in a manner determined by the receiver
- E. are handled in a manner determined by the stimulus

Correct Answer: BD

QUESTION 3

What does multiplicity in UML 2.0 signify?

- A. interval of integers
- B. range of allowable cardinalities
- C. sequence and uniqueness of association
- D. ability to multiply two or more numbers
- E. upper bound for the number of allowable instances

Correct Answer: B

QUESTION 4

In UML, what is the behavior of an object caused by?

- A. a call
- B. a trigger
- C. an event
- D. an operation
- E. an event type

Correct Answer: C

QUESTION 5

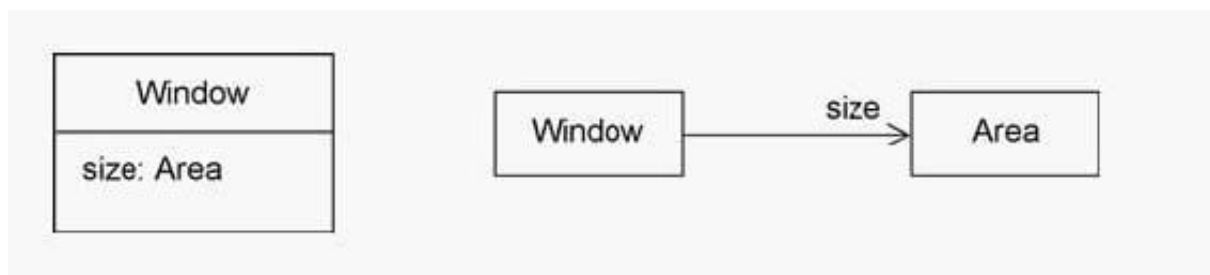
Which keyword denotes a lifeline that represents the object owning the lifeline?

- A. own
- B. self
- C. this
- D. object
- E. ncloser?

Correct Answer: B

QUESTION 6

In the exhibit, what is the meaning of size in these two diagrams?

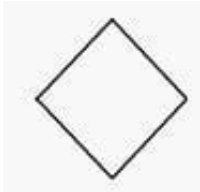


- A. Only one or the other should be used, not both, in order to avoid a name conflict.
- B. The size end name on the association indicates data storage and the attribute does not.
- C. There is one size property diagrammed both as an attribute and as an association end.
- D. There are two size properties that have no name conflict as long as each size is private.
- E. The size attribute in the class indicates that it will be stored within the class and the end name does not.

Correct Answer: C

QUESTION 7

What does diamond shape (as depicted in the exhibit) represent in UML 2.0 activity diagrams? (Choose two)

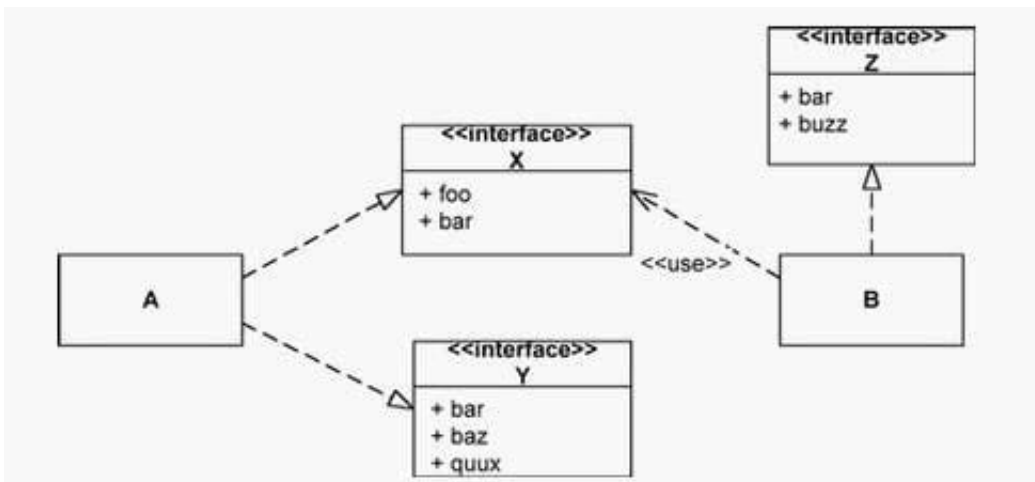


- A. joins
- B. forks
- C. merges
- D. decisions
- E. initial nodes
- F. flow final nodes
- G. activity final nodes

Correct Answer: CD

QUESTION 8

Refer to the exhibit. In that class A realizes interfaces X and Y, and that class B realizes interface Y and uses interface Z, what operations must class A support?



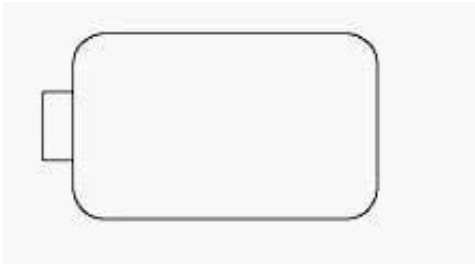
- A. union of the operations in interfaces X and Y
- B. union of the operations in interfaces X, Y, and Z

- C. intersection of the operations in interfaces X and Y
- D. intersection of the operations in interfaces X, Y, and Z
- E. not required to support any operations specified by the interfaces shown

Correct Answer: A

QUESTION 9

What does the symbol in the exhibit represent inside UML 2.0 activity diagrams?



- A. pin
- B. port
- C. place
- D. entry state
- E. parameter node

Correct Answer: A

QUESTION 10

What does a solid circle (as depicted in the exhibit) represent in UML 2.0 activity diagrams?



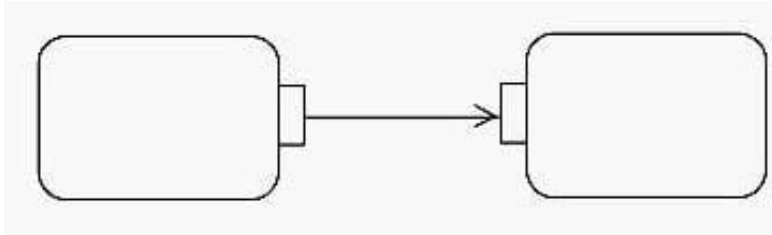
- A. joins
- B. forks
- C. merges
- D. decisions
- E. initial nodes
- F. flow final nodes

G. activity final nodes

Correct Answer: E

QUESTION 11

An arrowed line connecting small rectangles attached to round-cornered, solid-line rectangles is depicted in the exhibit. does the arrowed line represent in UML 2.0 activity diagrams?



- A. object flow
- B. control flow
- C. dependency
- D. state transition
- E. message passing
- F. unidirectional association

Correct Answer: A

QUESTION 12

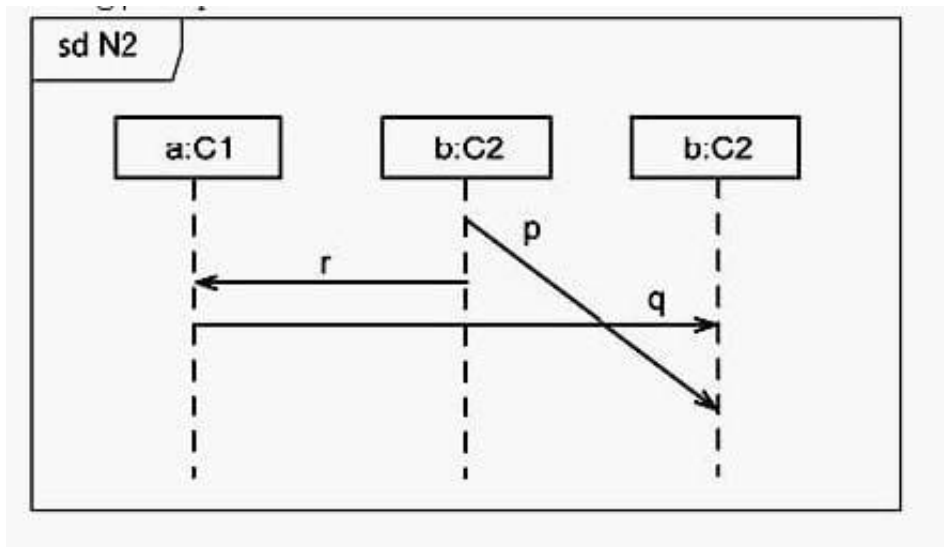
What are the possible relationships among use cases in UML 2.0? (Choose two)

- A.
- B.
- C.
- D.
- E.
- F.

Correct Answer: BD

QUESTION 13

Let us denote sending of p as $!p$ and receiving p as $?p$. Which trace defines the interaction N2 in the exhibit?



- A.
- B.
- C.