

HP2-Z33^{Q&As}

HP Unified Wired-Wireless Networks and BYOD

Pass HP HP2-Z33 Exam with 100% Guarantee

Free Download Real Questions & Answers **PDF** and **VCE** file from:

<https://www.certbus.com/hp2-z33.html>

100% Passing Guarantee
100% Money Back Assurance

Following Questions and Answers are all new published by HP Official Exam Center

- ⚙ **Instant Download** After Purchase
- ⚙ **100% Money Back** Guarantee
- ⚙ **365 Days** Free Update
- ⚙ **800,000+** Satisfied Customers



QUESTION 1

Which customer requirements would cause a WLAN designer to recommend implementing an HP Unified Wired-Wireless enterprise controller? (Select two.)

- A. The customer currently has 500 access points and an HP MSM controller deployed, and they plan to deploy an additional 400 access points.
- B. The customer expects that the number of authenticated users will increase from 1500 to 2500.
- C. The customer wants to manage their wireless network using the HP IMC platform.
- D. The customer requires high availability and seamless failover of non-centralized traffic,
- E. The customer plans to deploy a new wireless network with 500 access points.

Correct Answer: CD

QUESTION 2

In an HP BYOD solution, which settings are required in order to allow guest users to access the BYOD registration page? (Select two.)

- A. User Access Manager Access Condition on the VLAN group that selects the GUEST VLAN
- B. User Access Manager Access Policy that defines user authentication
- C. User Access Manager Access Policy that returns Onboarding VLAN
- D. Portal free rule that enables DNS to be forwarded from onboarding VLAN interface to DNS server
- E. Portal server commands that block HTTP traffic from being forwarded

Correct Answer: DE

QUESTION 3

Which action does the Wireless Intrusion Prevention System (WIPS) take when it detects that a device is sending frames with a fixed initialization vector?

- A. captures the frames for future analysis
- B. logs the event
- C. deauthenticates the user
- D. adds the device to the dynamic blacklist

Correct Answer: B

QUESTION 4

In an HP BYOD solution, what does DHCP fingerprinting provide?

- A. endpoint information
- B. web browser type
- C. SSID of the connection
- D. user account information

Correct Answer: A

QUESTION 5

A customer has an HP BYOD solution based on an HP 830 Unified Wired-Wireless Controller and HP 425 Access Points (APs). To ease the controller adoption of the APs, a VLAN is set up on the corporate LAN. How should this VLAN be configured?

- A. Set the VLAN on the switches between the APs and Comware L3 switch
- B. Set the VLAN as VLAN 1
- C. Set the VLAN on the switches between the APs and 830 wireless controller
- D. Set the VLAN on the switches between the APs and the 830 switch

Correct Answer: A

QUESTION 6

A network administrator sets up the DHCP relay on an HP Comware Layer 3 device that forwards IP traffic between the VLANs associated with the wireless SSID with these commands.

```
interface Vlan-interface 100
description internet access
ip address 10.1.100.1 255.255.255.0
dhcp select relay
dhcp relay server-select 0
```

What must the administrator configure prior to enabling the DHCP relay to the DHCP server on 10.0.0.200 in the interface vlan-interface 100?

```
A ☐ Interface vlan 100
    dhcp relay server-group 0 ip 10.0.0.200

B ☐ system-view
    dhcp enable
    dhcp relay server-group 0 ip 10.0.0.200

C ☐ system-view
    dhcp select relay
    dhcp relay server-group 0 ip 10.0.0.200

D ☐ system-view
    dhcp relay server-group 0 ip 10.0.0.200
```

A. Option A

B. Option B

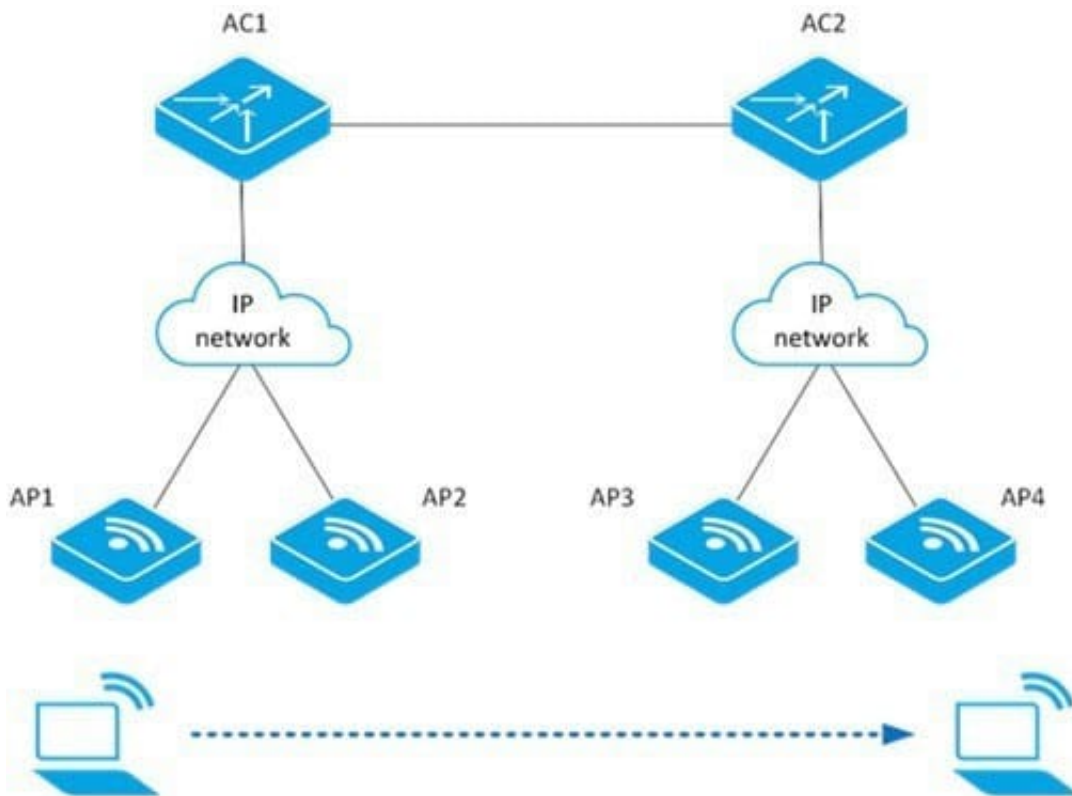
C. Option C

D. Option D

Correct Answer: B

QUESTION 7

Refer to the exhibit.



A client can roam successfully between AP1 and AP2. However, the client is unable to roam between AP2 and AP3. What could be the problem?

- A. The client is not using RSN+802.1X authentication mode.
- B. The AP2 and AP3 are not in the same mobility group.
- C. The network is using IPv6.
- D. The IACTP service has been disabled on AC1.

Correct Answer: D

QUESTION 8

HP has released a new version of an access controller software package file. How does the network administrator activate the new software version?

- A. by interrupting the boot sequence and selecting the Update Bootware option
- B. by interrupting the boot sequence and selecting the Boot Extend Bootware option
- C. by interrupting the boot sequence and selecting the Boot Backup Bootware option
- D. by interrupting the boot sequence and selecting the Update Full Bootware option

Correct Answer: B

QUESTION 9

Which action can a guest manager perform?

- A. Manage accounts of other guest managers.
- B. Create but not delete guest accounts.
- C. Set up corporate users as guests in the self-service page.
- D. Extend the lifetime of guest accounts.

Correct Answer: D

QUESTION 10

In 802.1XEAP-TLS, how can a network administrator control network access of corporate users?

- A. by selecting which user groups are entitled to deploy a certificate on their endpoints
- B. by selecting which endpoints are entitled to install a certificate
- C. by defining corporate users as guests
- D. by disabling or deleting the user's endpoint in User Access Manager

Correct Answer: B

QUESTION 11

An administrator changes the setting for VLAN 200 on an HP 830 switch from tagged to untagged. How will this change affect the traffic sent over VLAN 200?

- A. Traffic sent over VLAN 200 will be forwarded to untagged VLAN 1.
- B. Tagged management traffic can no longer be sent on VLAN 200.
- C. Traffic sent over VLAN 200 will have the 802.1Q tag removed.
- D. Tagged traffic sent over VLAN 200 will be forwarded without changing the 802.1Q tag.

Correct Answer: C

QUESTION 12

A network administrator configures 802.1X authentication on a wireless network set with an HP 830 Unified Wired-Wireless Controller. The administrator configures a RADIUS scheme named radius1 and a Domain scheme name domain1. Which other configuration will enable 802.1X?

- A ☐ system-view
dot1x mandatory-domain radius1
- B ☐ system-view
dot1x mandatory-domain domain1
- C ☐ system-view
Interface wlan-ess 1
dot1x mandatory-domain domain1
- D ☐ system-view
Interface wlan-ess 1
dot1x mandatory-domain radius1

A. Option A

B. Option B

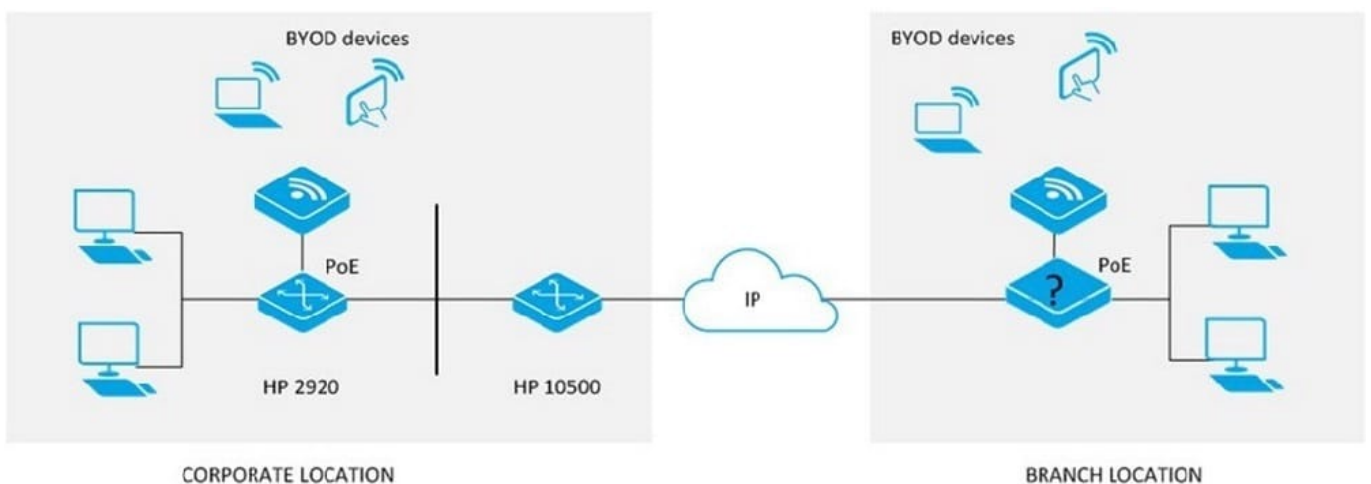
C. Option C

D. Option D

Correct Answer: D

QUESTION 13

Refer to the exhibit.



A company wants to connect a mid-size branch office to their corporate location. An HP 10500/7500 Unified Wired-Wireless module is deployed at the corporate location. A maximum of six HP MSM access points will be deployed at the branch location.

Which HP device meets these customer requirements and is the most cost effective solution for the branch location?

A. HP 830

- B. HP 870
- C. HP 2920
- D. HP 7500

Correct Answer: A

QUESTION 14

When accessing the wireless network in 802.1X with EAP-TLS, what do the user endpoints require?

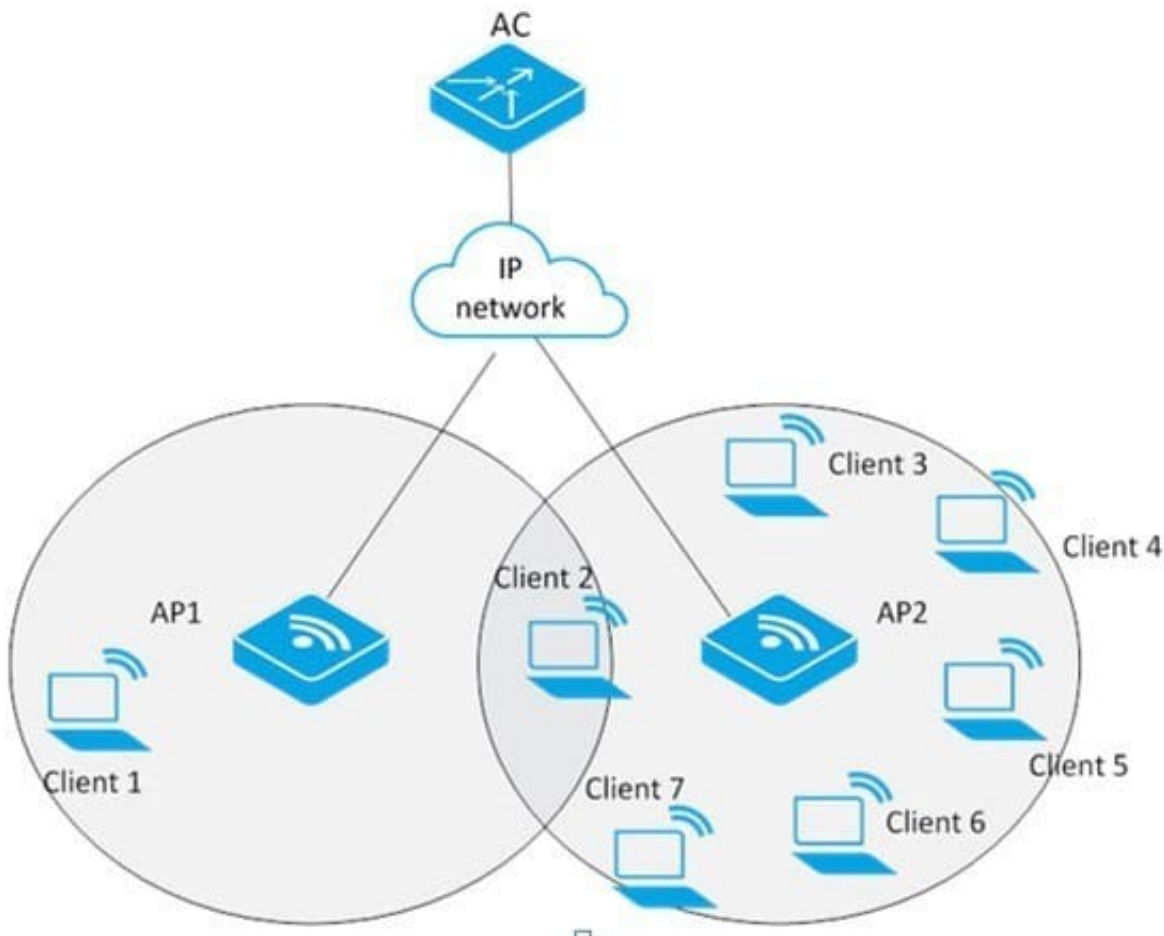
- A. username and password of the user's account
- B. client certificate or root certificate
- C. client certificate and root certificate
- D. MS-CHAPV2 to be configured

Correct Answer: C

Reference: [http://technet.microsoft.com/en?s/library/cc739638\(v=ws.10\).aspx](http://technet.microsoft.com/en?s/library/cc739638(v=ws.10).aspx).

QUESTION 15

Refer to the exhibit.



The access controller (AC) has configured session-mode load balancing. The maximum number of sessions is configured as 5. The maximum session gap is configured as 4. Client 1 is associated with AP1. Clients 2 to 6 are associated with AP2. Client 7 can only hear AP2. Client 7 attempts to associate to AP2.

What happens?

- A. AP2 allows client 7 to associate with it, after client 7 sends multiple association attempts to AP2.
- B. AP2 accepts client 7 association requests and forces client 2 to connect to AP1 by sending client 2 a disassociation request
- C. AP2 accepts client 7 association requests, as the load balancing threshold values have not been met.
- D. AP2 rejects all client 7 association requests.

Correct Answer: D

[HP2-Z33 PDF Dumps](#)

[HP2-Z33 VCE Dumps](#)

[HP2-Z33 Braindumps](#)