

HP0-S33^{Q&As}

Advanced Integration and Management of HP Server Solutions

Pass HP HP0-S33 Exam with 100% Guarantee

Free Download Real Questions & Answers **PDF** and **VCE** file from:

<https://www.certbus.com/hp0-s33.html>

100% Passing Guarantee
100% Money Back Assurance

Following Questions and Answers are all new published by HP Official Exam Center

- ⚙️ **Instant Download** After Purchase
- ⚙️ **100% Money Back** Guarantee
- ⚙️ **365 Days** Free Update
- ⚙️ **800,000+** Satisfied Customers



QUESTION 1

Which HP software delivers active health and performance monitoring?

- A. Insight Dynamics
- B. Insight Remote Support
- C. Insight Control
- D. Insight Rapid Deployment

Correct Answer: C

<http://h18004.www1.hp.com/products/servers/management/ice/index.html>

Monitor Infrastructure Health and Performance Continuously -Monitor system health and performance through HP SIM, including "phone home" and warranty and service contract reporting functions -Quickly pinpoint and resolve bottlenecks with processors, memory, NICs, PCI buses to tune your existing server infrastructure for maximum performance -Compare actual performance with the known capabilities of each component, and determine in real time which components are experiencing performance issues

QUESTION 2

You configured disk thresholds for all servers running Windows Server 2008 R2. You want HP SIM to react by running a script that will delete all IE temporary files on the server that reports problems with the available capacity on the drive. What do you have to configure from the HP SIM level to achieve this?

- A. Configure the Single Sign On feature for all the servers that should be covered that script.
- B. Establish a trust relationship between HP SIM and all servers covered by that script, and apply the Insight Control licenses.
- C. Create a custom command that will delete temporary files and configure an automatic event handling task to run this script when a specific event occurs.
- D. Import the HP SIM certificate to the HP System Management homepage for all of the servers that should be covered by that script and configure SNMP security to allow remote command execution.

Correct Answer: C

QUESTION 3

What can you configure with the BladeSystem Insight Display on a c7000 enclosure? (Select three)

- A. Rack name
- B. Power mode
- C. Number of fans installed

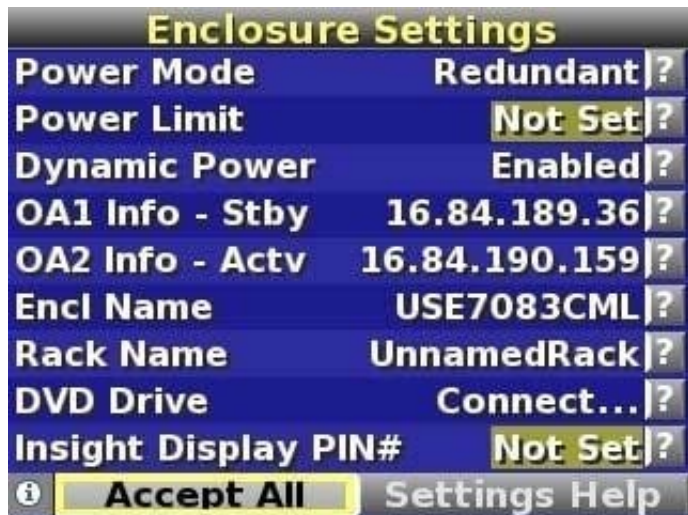
D. OA1 IP address

E. Blade name

F. Midplane serial number

Correct Answer: ABD

Reference: <http://h20000.www2.hp.com/bc/docs/support/SupportManual/c00698534/c00698534.pdf> (page 13)



QUESTION 4

Which HP P4000 feature enables volume replication to the remote site using WAN link?

A. CMC WAN Replication

B. SAN/iQ Remote Copy

C. SAN/iQ SmartClone

D. P4000 Command View

Correct Answer: B

QUESTION 5

The Remote Deployment Pack software enables the Rip-and-Replace functionality. You can use Rip-and- Replace to assign a particular function or role to which device?

A. ProLiant BL server

B. Onboard Administrator

C. Virtual Connect Module

D. ProLiant Gen8 DL based server

Correct Answer: A

<http://bizsupport.austin.hp.com/bc/docs/support/SupportManual/c01154890/c01154890.pdf> (pag17)

QUESTION 6

You are upgrading the iLO 4 firmware and the flash fails. What is the next step?

- A. Retry the flash before rebooting the server or iLO.
- B. ~~to reboot so that you can revert to the original version.~~
- C. Pull the power cord to abort upgrade and revert to the original version.
- D. Reboot the server and re-enter the iLO update to force the update.

Correct Answer: A

If this error occurs, click the Clear Error button to reset the flash process, and then try the firmware update again with the correct firmware file. If you do not clear the error, the same error might occur even when you use the correct firmware file.

QUESTION 7

You instated Hyper-V on a BL460 G6. Which RBSU advanced setting should be changed?

- A. Hyperthreading
- B. Intel Virtualization technology
- C. hardware pre-fetcher
- D. option ROM loading sequence

Correct Answer: C

QUESTION 8

Which HP web-based tool can be used to configure a solution of servers, storage and networking along with services, allowing an export of the final solution?

- A. Sizing Tool for VMware vSphere
- B. Simplified Configuration Environment
- C. Sizer for Microsoft Hyper-V R2
- D. Enterprise Configurator Workbench

Correct Answer: B

Reference: <http://h22174.www2.hp.com/SimplifiedConfig/Index>

QUESTION 9

On a Microsoft Windows Server, the performance counter Processor % Processor time can indicate an overload situation.

At which percentage is it determined?

- A. 70%
- B. 75%
- C. 80%
- D. 85%

Correct Answer: D

<http://msdn.microsoft.com/en-us/library/ms178072.aspx> An efficient way to determine CPU usage is to use the counter in System Monitor. This counter monitors the amount of time the CPU spends executing a thread that is not idle. A consistent state of 80 percent to 90 percent may indicate the need to upgrade your CPU or add more processors.

QUESTION 10

Which Windows performance counter can be used to check for a Smart Array disk bottleneck problem?

- A. Logical Disk: Average Disk Queue Length
- B. Physical Disk: Average Disk Queue length
- C. Logical Disk: Average Disk Write Queue Length
- D. Physical Disk: Average Disk Write Queue Length

Correct Answer: B

QUESTION 11

Match each server environment to correct description.

Hot Area:

Front-end server

Filters and transfers network traffic
Provides resolution from hostnames to IP addresses
Assign IP addresses to clients on a network or domain
Enable downloading and uploading of files
Receives requests from clients and relays to the appropriate server
Provides access to remote networks
Connects dissimilar networks providing access

Dynamic Host Configuration Protocol Server

Filters and transfers network traffic
Provides resolution from hostnames to IP addresses
Assign IP addresses to clients on a network or domain
Enable downloading and uploading of files
Receives requests from clients and relays to the appropriate server
Provides access to remote networks
Connects dissimilar networks providing access

Gateway server

Filters and transfers network traffic
Provides resolution from hostnames to IP addresses
Assign IP addresses to clients on a network or domain
Enable downloading and uploading of files
Receives requests from clients and relays to the appropriate server
Provides access to remote networks
Connects dissimilar networks providing access

Domain Name Services

Filters and transfers network traffic
Provides resolution from hostnames to IP addresses
Assign IP addresses to clients on a network or domain
Enable downloading and uploading of files
Receives requests from clients and relays to the appropriate server
Provides access to remote networks
Connects dissimilar networks providing access

File Transfer Protocol

Filters and transfers network traffic
Provides resolution from hostnames to IP addresses
Assign IP addresses to clients on a network or domain
Enable downloading and uploading of files
Receives requests from clients and relays to the appropriate server
Provides access to remote networks
Connects dissimilar networks providing access

Remote access server

Filters and transfers network traffic
Provides resolution from hostnames to IP addresses
Assign IP addresses to clients on a network or domain
Enable downloading and uploading of files
Receives requests from clients and relays to the appropriate server
Provides access to remote networks
Connects dissimilar networks providing access

Bridgehead

Filters and transfers network traffic
Provides resolution from hostnames to IP addresses
Assign IP addresses to clients on a network or domain
Enable downloading and uploading of files
Receives requests from clients and relays to the appropriate server
Provides access to remote networks
Connects dissimilar networks providing access

Hot Area:

Front-end server

Filters and transfers network traffic
Provides resolution from hostnames to IP addresses
Assign IP addresses to clients on a network or domain
Enable downloading and uploading of files
Receives requests from clients and relays to the appropriate server
Provides access to remote networks
Connects dissimilar networks providing access

Dynamic Host Configuration Protocol Server

Filters and transfers network traffic
Provides resolution from hostnames to IP addresses
Assign IP addresses to clients on a network or domain
Enable downloading and uploading of files
Receives requests from clients and relays to the appropriate server
Provides access to remote networks
Connects dissimilar networks providing access

Gateway server

Filters and transfers network traffic
Provides resolution from hostnames to IP addresses
Assign IP addresses to clients on a network or domain
Enable downloading and uploading of files
Receives requests from clients and relays to the appropriate server
Provides access to remote networks
Connects dissimilar networks providing access

Domain Name Services

Filters and transfers network traffic
Provides resolution from hostnames to IP addresses
Assign IP addresses to clients on a network or domain
Enable downloading and uploading of files
Receives requests from clients and relays to the appropriate server
Provides access to remote networks
Connects dissimilar networks providing access

File Transfer Protocol

Filters and transfers network traffic
Provides resolution from hostnames to IP addresses
Assign IP addresses to clients on a network or domain
Enable downloading and uploading of files
Receives requests from clients and relays to the appropriate server
Provides access to remote networks
Connects dissimilar networks providing access

Remote access server

Filters and transfers network traffic
Provides resolution from hostnames to IP addresses
Assign IP addresses to clients on a network or domain
Enable downloading and uploading of files
Receives requests from clients and relays to the appropriate server
Provides access to remote networks
Connects dissimilar networks providing access

Bridgehead

Filters and transfers network traffic
Provides resolution from hostnames to IP addresses
Assign IP addresses to clients on a network or domain
Enable downloading and uploading of files
Receives requests from clients and relays to the appropriate server
Provides access to remote networks
Connects dissimilar networks providing access

Correct Answer:

Front-end server

Filters and transfers network traffic
Provides resolution from hostnames to IP addresses
Assign IP addresses to clients on a network or domain
Enable downloading and uploading of files
Receives requests from clients and relays to the appropriate server
Provides access to remote networks
Connects dissimilar networks providing access

Dynamic Host Configuration Protocol Server

Filters and transfers network traffic
Provides resolution from hostnames to IP addresses
Assign IP addresses to clients on a network or domain
Enable downloading and uploading of files
Receives requests from clients and relays to the appropriate server
Provides access to remote networks
Connects dissimilar networks providing access

Gateway server

Filters and transfers network traffic
Provides resolution from hostnames to IP addresses
Assign IP addresses to clients on a network or domain
Enable downloading and uploading of files
Receives requests from clients and relays to the appropriate server
Provides access to remote networks
Connects dissimilar networks providing access

Domain Name Services

Filters and transfers network traffic
Provides resolution from hostnames to IP addresses
Assign IP addresses to clients on a network or domain
Enable downloading and uploading of files
Receives requests from clients and relays to the appropriate server
Provides access to remote networks
Connects dissimilar networks providing access

File Transfer Protocol

Filters and transfers network traffic
Provides resolution from hostnames to IP addresses
Assign IP addresses to clients on a network or domain
Enable downloading and uploading of files
Receives requests from clients and relays to the appropriate server
Provides access to remote networks
Connects dissimilar networks providing access

Remote access server

Filters and transfers network traffic
Provides resolution from hostnames to IP addresses
Assign IP addresses to clients on a network or domain
Enable downloading and uploading of files
Receives requests from clients and relays to the appropriate server
Provides access to remote networks
Connects dissimilar networks providing access

Bridgehead

Filters and transfers network traffic
Provides resolution from hostnames to IP addresses
Assign IP addresses to clients on a network or domain
Enable downloading and uploading of files
Receives requests from clients and relays to the appropriate server
Provides access to remote networks
Connects dissimilar networks providing access

Front-end server - Receives requests from clients and relays to the appropriate server

Dynamic host configuration Protocol - assign IP addresses to clients on a network or domain

Gateway server - Filters and transfers network traffic

Domain Name Services - Provides resolution from hostname to IP addresses

File Transfer protocol -Enable downloading and uploading of files

Remote access server - Provides access to remote networks

Bridgehead - Connects dissimilar networks providing access

QUESTION 12

Which Advanced Memory Protection configuration allows a system to survive the complete of two DRAM devices?

- A. Lockstep mode with RDIMMs
- B. Online Spare Memory mode
- C. Lockstep mode with UDIMMs
- D. Advanced ECC mode with UDIMMs

Correct Answer: A

http://h20000.www2.hp.com/bizsupport/TechSupport/Document.jsp?lang=esandcc=lamerica_nsc_cnt_amerandtaskId=115andprodSeriesId=5177937andprodTypeId=15351andobjectID=c03250296

The server also can operate in independent channel mode or combined channel mode (lockstep). When running in lockstep mode, user gains reliability in one of two ways:

If running with UDIMMs (built with x8 DRAM devices), the system can survive a complete DRAM failure (SDDC). In independent channel mode, this failure would be an uncorrectable error.

If running with RDIMM (built with x4 DRAM devices), the system can survive the complete failure of two DRAM devices (DDDC). Running in independent mode, the server can only survive the complete failure of a Single DRAM Device (SDDC).

QUESTION 13

A customer complained of slow performance on an HP ProLiant server. You upgraded to faster processes and added memory to the server. What should you create after you change the server hardware configuration?

- A. New performance baseline
- B. Insight Diagnostics report
- C. CPU Stress report

D. Memory Validation report

Correct Answer: A

QUESTION 14

Which HP tool assists in estimating power consumption selection, including power supplies, at a system, rack, and multi-rack levels?

- A. UPS Sizing Tool
- B. Insight Control Manager
- C. Power Advisor
- D. Power Protector

Correct Answer: C

<http://h18004.www1.hp.com/products/solutions/power/index.html> (first para) The HP Power Advisor is a tool provided by Hewlett-Packard to assist in the estimation of power consumption and proper selection of components including power supplies at a system, rack, and multi-rack level.

QUESTION 15

A consultant must provide a UPS solution to support the load requirement of a server solution being delivered. What is the recommended tool to use to provide the correct UPS solution?

- A. HP Rack and Power Sizer (upssizer.com)
- B. HP Value UPS Manager
- C. HP Rack and Power manager
- D. HP Power Advisor

Correct Answer: A

Reference: <http://h18004.www1.hp.com/products/solutions/power/index.html>

[Latest HP0-S33 Dumps](#)

[HP0-S33 PDF Dumps](#)

[HP0-S33 Practice Test](#)