

AZ-101^{Q&As}

Microsoft Azure Integration and Security

Pass Microsoft AZ-101 Exam with 100% Guarantee

Free Download Real Questions & Answers **PDF** and **VCE** file from:

<https://www.certbus.com/az-101.html>

100% Passing Guarantee
100% Money Back Assurance

Following Questions and Answers are all new published by Microsoft
Official Exam Center

-  **Instant Download** After Purchase
-  **100% Money Back** Guarantee
-  **365 Days** Free Update
-  **800,000+** Satisfied Customers



QUESTION 1

From the MFA Server blade, you open the Block/unblock users blade as shown in the exhibit.

Block/unblock users

A blocked user will not receive Multi-Factor Authentication requests. Authentication attempts for that user will be automatically denied. A user will remain blocked for 90 days from the time they are blocked. To manually unblock a user, click the "Unblock" action.

Blocked users

USER	REASON	DATE	ACTION
AlexW@M365x8325140nMicrosoft.com	Lost phone	06/14/2018, 8:26:38	Unblock 

What caused AlexW to be blocked?

- A. An administrator manually blocked the user.
- B. The user reports a fraud alert when prompted for additional authentication.
- C. The user account password expired.
- D. The user entered an incorrect PIN four times within 10 minutes.

Correct Answer: B

QUESTION 2

Note: This question is part of a series of questions that present the same scenario. Each question in the series contains a unique solution that might meet the stated goals. Some question sets might have more than one correct solution, while

others might not have a correct solution.

After you answer a question in this section, you will NOT be able to return to it. As a result, these questions will not appear in the review screen.

You manage a virtual network named VNet1 that is hosted in the West US Azure region.

VNet1 hosts two virtual machines named VM1 and VM2 that run Windows Server.

You need to inspect all the network traffic from VM1 to VM2 for a period of three hours.

Solution: From Azure Monitor, you create a metric on Network In and Network Out.

Does this meet the goal?

A. Yes

B. No

Correct Answer: B

You should use Azure Network Watcher.

References:

<https://docs.microsoft.com/en-us/azure/network-watcher/network-watcher-monitoring-overview> Topic 2, Mix Questions Set B (Implement advanced networking)

QUESTION 3

You have an Azure Service Bus.

You need to implement a Service Bus queue that guarantees first in first-out (FIFO) delivery of messages.

What should you do?

A. Set the Lock Duration setting to 10 seconds.

B. Enable duplicate detection.

C. Set the Max Size setting of the queue to 5 GB.

D. Enable partitioning.

E. Enable sessions.

Correct Answer: E

Through the use of messaging sessions you can guarantee ordering of messages, that is first-in-first-out (FIFO) delivery of messages. References: <https://docs.microsoft.com/en-us/azure/service-bus-messaging/service-bus-azure-and-service-bus-queues-compared-contrasted>

QUESTION 4

You need to create a web app named corp7509086n2 that can be scaled horizontally. The solution must use the lowest possible pricing tier for the App Service plan. What should you do from the Azure portal?

A. Check the answer in explanation.

Correct Answer: A

See explanation below.

Step 1:

In the Azure Portal, click Create a resource > Web + Mobile > Web App.

Step 2:

Use the Web app settings as listed below.

Web App name: corp7509086n2

Hosting plan: Azure App Service plan

Pricing tier of the Pricing Tier: Standard

Change your hosting plan to Standard, you can't setup auto-scaling below standard tier.

Step 3:

Select Create to provision and deploy the Web app.

References:

<https://docs.microsoft.com/en-us/azure/app-service/environment/app-service-web-how-to-create-a-web-app-in-an-ase>

<https://azure.microsoft.com/en-us/pricing/details/app-service/plans/>

QUESTION 5

You need to prevent remote users from publishing via FTP to a function app named FunctionAppIod7509087fa. Remote users must be able to publish via FTPS. What should you do from the Azure portal?

A. Check the answer in explanation.

Correct Answer: A

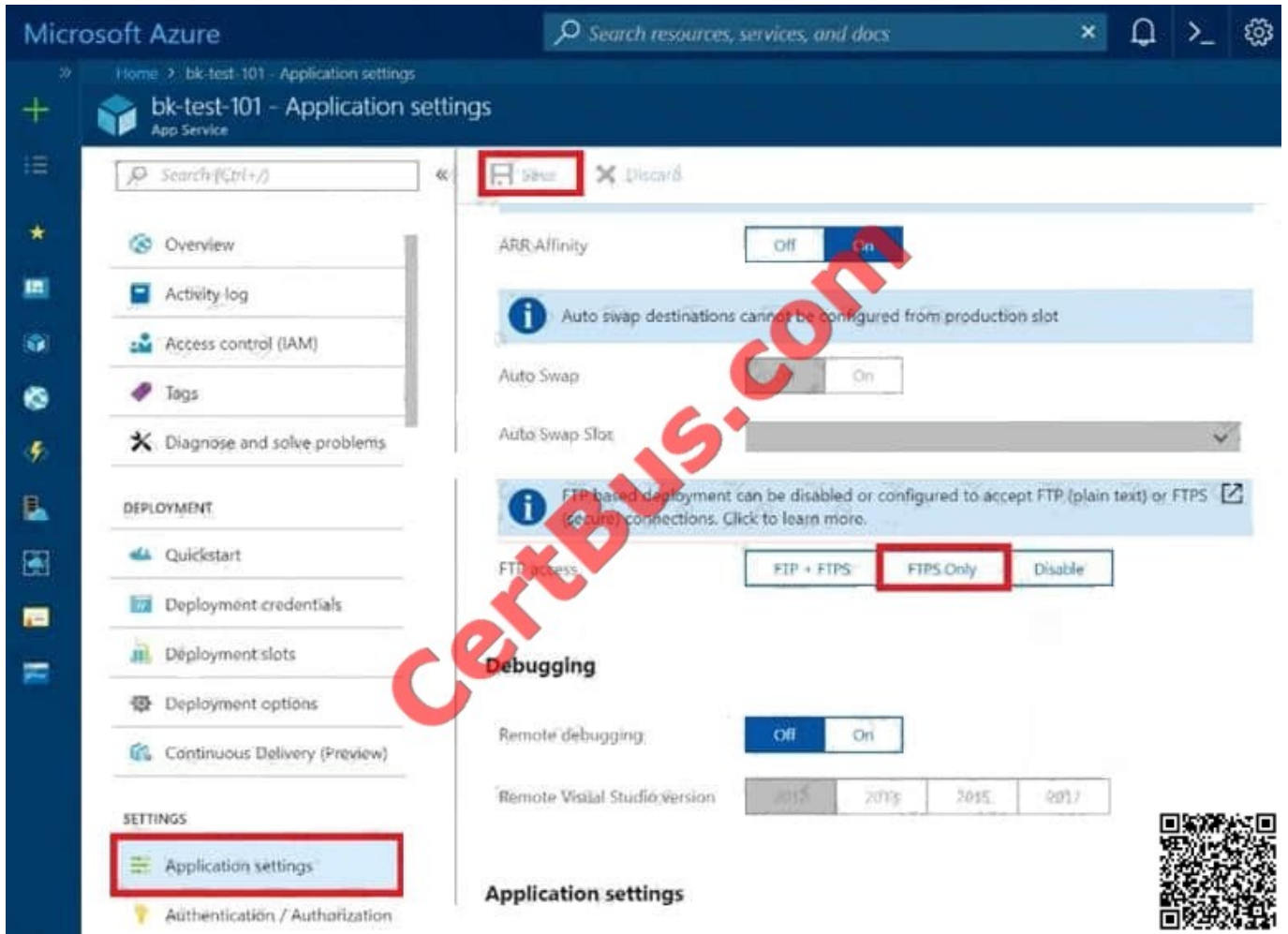
See explanation below.

Step 1:

Locate and select the function app FunctionAppIod7509087fa.

Step 2:

Select Application Settings > FTP Access, change FTP access to FTPS Only, and click Save.



References: <https://blogs.msdn.microsoft.com/appserviceteam/2018/05/08/web-apps-making-changes-to-ftp-deployments/>

QUESTION 6

You recently deployed a web app named homepage1od7509087.

You need to back up the code used for the web app and to store the code in the homepage1od7509Q87 storage account. The solution must ensure that a new backup is created daily.

What should you do from the Azure portal?

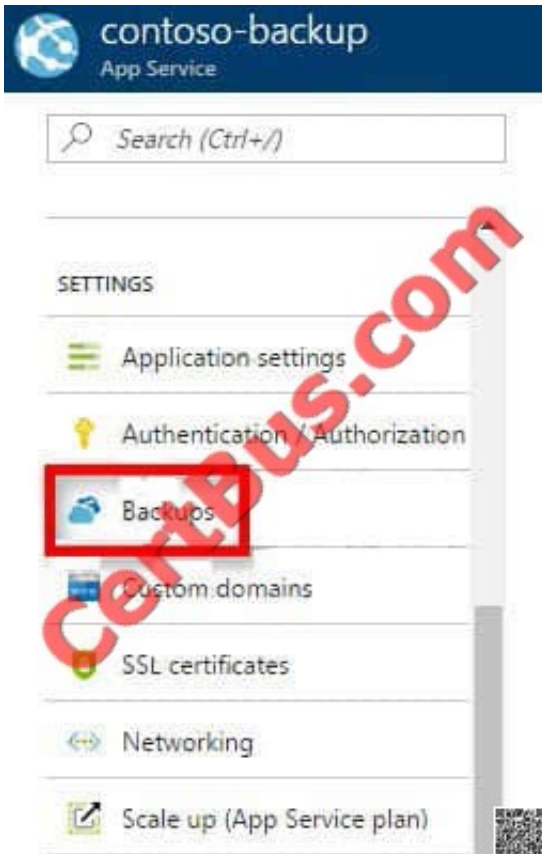
A. Check the answer in explanation.

Correct Answer: A

See explanation below.

Step 1:

Locate and select the web app homepage1od7509087, select Backups. The Backups page is displayed.

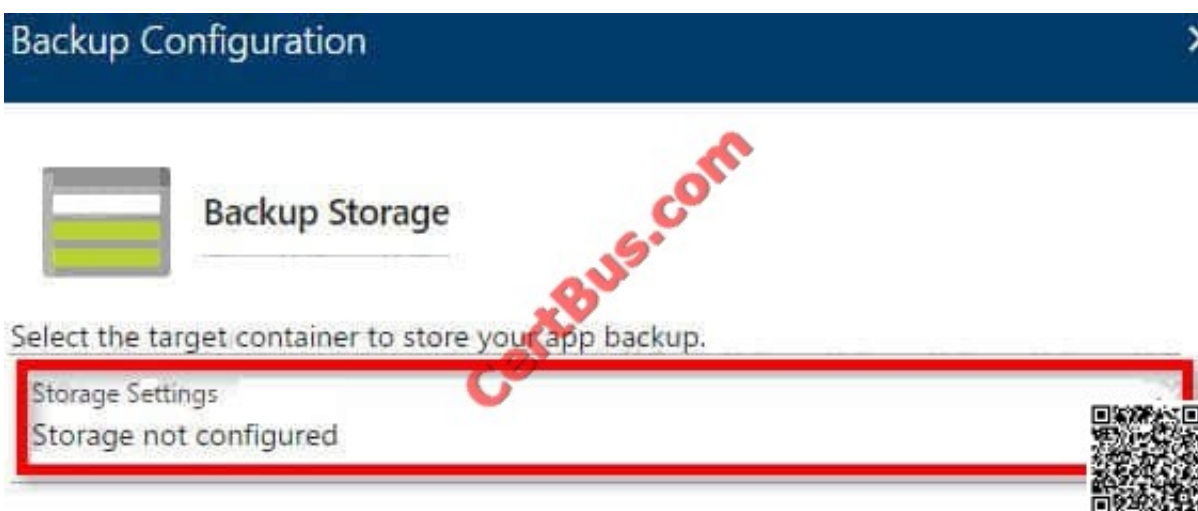


Step 2:

In the Backup page, Click Configure.

Step 3:

In the Backup Configuration page, click Storage: Not configured to configure a storage account.



Step 4:

Choose your backup destination by selecting a Storage Account and Container. Select the homepage lod7509087 storage account.

Step 5:

In the Backup Configuration page that is still left open, select Scheduled backup On, and configure daily backups.



Step 6:

In the Backup Configuration page, click Save.

Step 7:

In the Backups page, click Backup.

References:

<https://docs.microsoft.com/en-us/azure/app-service/web-sites-backup>

QUESTION 7

Note: This question is part of a series of questions that present the same scenario. Each question in the series contains a unique solution that might meet the stated goals. Some question sets might have more than one correct solution, while

others might not have a correct solution.

After you answer a question in this section, you will NOT be able to return to it. As a result, these questions will not appear in the review screen.

You have an Azure Active Directory (Azure AD) tenant named Adatum and an Azure Subscription named Subscription1. Adatum contains a group named Developers. Subscription1 contains a resource group named Dev.

You need to provide the Developers group with the ability to create Azure logic apps in the Dev resource group.

Solution: On Subscription1, you assign the Logic App Operator role to the Developers group.

Does this meet the goal?

A. Yes

B. No

Correct Answer: B

The Logic App Operator role only lets you read, enable and disable logic app. With it you can view the logic app and run history, and enable/disable. Cannot edit or update the definition.

You would need the Logic App Contributor role.

References:

<https://docs.microsoft.com/en-us/azure/role-based-access-control/built-in-roles>

<https://docs.microsoft.com/en-us/azure/logic-apps/logic-apps-securing-a-logic-app>

QUESTION 8

You have an azure subscription that contain a virtual named VNet1. VNet1. contains four subnets named Gateway, perimeter, NVA, and production.

The NVA contain two network virtual appliance (NVAs) that will network traffic inspection between the perimeter subnet and the production subnet.

You need o implement an Azure load balancer for the NVAs. The solution must meet the following requirements:

The NVAs must run in an active-active configuration that uses automatic failover.

The NVA must load balance traffic to two services on the Production subnet. The services have different IP addresses

Which three actions should you perform? Each correct answer presents parts of the solution.

NOTE: Each correct selection is worth one point.

A. Add two load balancing rules that have HA Ports enabled and Floating IP disabled.

B. Deploy a standard load balancer.

C. Add a frontend IP configuration, two backend pools, and a health prob.

D. Add a frontend IP configuration, a backend pool, and a health probe.

E. Add two load balancing rules that have HA Ports and Floating IP enabled.

F. Deploy a basic load balancer.

Correct Answer: BCE

A standard load balancer is required for the HA ports.

-Two backend pools are needed as there are two services with different IP addresses.

-Floating IP rule is used where backend ports are reused.

QUESTION 9

You discover that VM3 does NOT meet the technical requirements.

You need to verify whether the issue relates to the NSGs.

What should you use?

- A. Diagram in VNet1
- B. the security recommendations in Azure Advisor
- C. Diagnostic settings in Azure Monitor
- D. Diagnose and solve problems in Traffic Manager Profiles
- E. IP flow verify in Azure Network Watcher

Correct Answer: E

Scenario: Contoso must meet technical requirements including:

Ensure that VM3 can establish outbound connections over TCP port 8080 to the applications servers in the Montreal office.

IP flow verify checks if a packet is allowed or denied to or from a virtual machine. The information consists of direction, protocol, local IP, remote IP, local port, and remote port. If the packet is denied by a security group, the name of the rule

that denied the packet is returned. While any source or destination IP can be chosen, IP flow verify helps administrators quickly diagnose connectivity issues from or to the internet and from or to the on-premises environment.

References:

<https://docs.microsoft.com/en-us/azure/network-watcher/network-watcher-ip-flow-verify-overview>

QUESTION 10

Note: This question is part of a series of questions that present the same scenario. Each question in the series contains a unique solution that might meet the stated goals.

Some question sets might have more than one correct solution, while others might not have a correct solution.

After you answer a question in this section, you will NOT be able to return to these questions will not appear on the review screen.

You manage a virtual network named VNet1 that is hosted in the West US Azure region.

VNet1 hosts two virtual machines named VM1 and VM2 that run Windows Server.

You need to inspect all the network traffic from VM1 to VM2 for a period of three hours.

Solution: From Azure Network Watcher, you create a packet capture.

Does this meet the goal?

- A. Yes
- B. No

Correct Answer: A

Azure Network Watcher provides tools to monitor, diagnose, view metrics, and enable or disable logs for resources in an Azure virtual network.

Capture packets to and from a VM

Advanced filtering options and fine-tuned controls, such as the ability to set time and size limitations, provide versatility. The capture can be stored in Azure Storage, on the VM's disk, or both. You can then analyze the capture file using several standard network capture analysis tools.

Network Watcher variable packet capture allows you to create packet capture sessions to track traffic to and from a virtual machine. Packet capture helps to diagnose network anomalies both reactively and proactively.

References:

<https://docs.microsoft.com/en-us/azure/network-watcher/network-watcher-monitoring-overview>

QUESTION 11

You have an Azure App Service plan named AdatumASP1 that uses the P2v2 pricing tier. AdatumASP1 hosts an Azure web app named adatumwebapp1. You need to delegate the management of adatumwebapp1 to a group named Devs. Devs must be able to perform the following tasks:

Add deployment slots.

View the configuration of AdatumASP1.

Modify the role assignment for adatumwebapp1.

Which role should you assign to the Devs group?

- A. Owner
- B. Contributor
- C. Web Plan Contributor
- D. Website Contributor

Correct Answer: B

The Contributor role lets you manage everything except access to resources.

QUESTION 12

Another administrator reports that she is unable to configure a web app named corplod7509086n3 to prevent all connections from an IP address of 11.0.0.11. You need to modify corplod7509086n3 to successfully prevent the connections from the IP address. The solution must minimize Azure-related costs.

What should you do from the Azure portal?

A. Check the answer in explanantion.

Correct Answer: A

See explanation below.

Step 1:

Find and select application corplod7509086n3:

1.

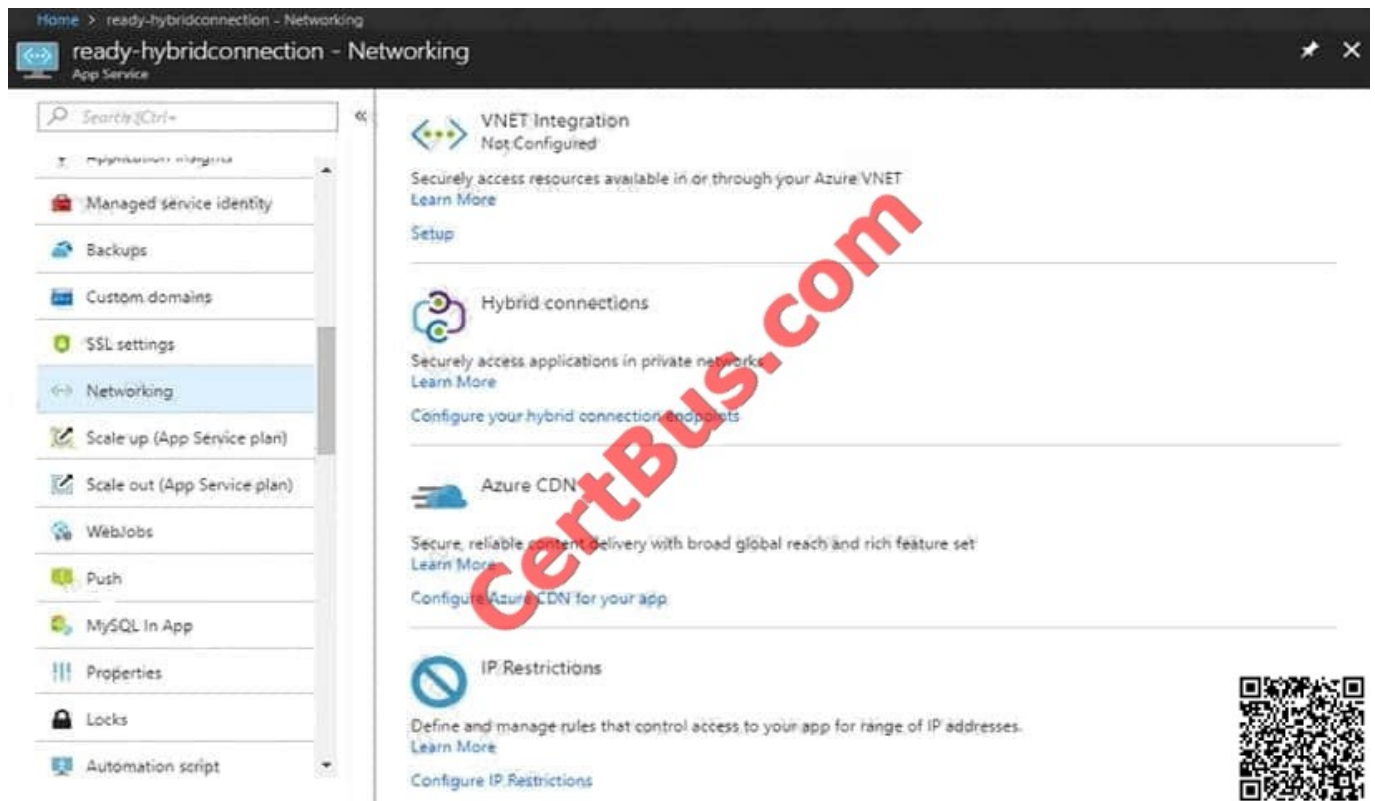
In the Azure portal, on the left navigation panel, click Azure Active Directory.

2.

In the Azure Active Directory blade, click Enterprise applications.

Step 2:

To add an IP restriction rule to your app, use the menu to open Network>IP Restrictions and click on Configure IP Restrictions



Step 3:

Click Add rule

You can click on [+] Add to add a new IP restriction rule. Once you add a rule, it will become effective immediately.

Home > ready-hybridconnection > Networking > IP Restrictions

IP Restrictions

Remove Refresh

IP Restrictions

IP restrictions allow you to define an allow/deny list of addresses in order to control traffic to your site. Rules are evaluated in priority order. If there are no rules defined then your app will accept traffic from any address. [Learn more](#)

+ Add rule

PRIORITY	NAME	IP ADDRESS	ACTION	
100	allowed access	131.107.159.0/24	Allow	...



Step 4:

Add name, IP address of 11.0.0.11, select Deny, and click Add Rule

Add IP Restriction [X]

Name ⓘ
Enter name for the IPAddress rule

IP Address ⓘ
V4 V6
Enter an IPv4 CIDR. Ex: 208.130.0.0/16

Action
Allow Deny

Priority
Ex: 300

Description

Add rule

References: <https://docs.microsoft.com/en-us/azure/app-service/app-service-ip-restrictions>

QUESTION 13

Note: This question is part of a series of questions that present the same scenario. Each question in the series contains a unique solution that might meet the stated goals. Some question sets might have more than one correct solution, while

others might not have a correct solution.

After you answer a question in this section, you will NOT be able to return to it. As a result, these questions will not appear in the review screen.

You have an Azure Active Directory (Azure AD) tenant named Adatum and an Azure Subscription named Subscription1. Adatum contains a group named Developers. Subscription1 contains a resource group named Dev.

You need to provide the Developers group with the ability to create Azure logic apps in the Dev resource group.

Solution: On Subscription1, you assign the DevTest Labs User role to the Developers group.

Does this meet the goal?

- A.
- B. Yes
- C. No

Correct Answer: B

DevTest Labs User role only lets you connect, start, restart, and shutdown virtual machines in your Azure DevTest Labs.

You would need the Logic App Contributor role.

References:

<https://docs.microsoft.com/en-us/azure/role-based-access-control/built-in-roles>

<https://docs.microsoft.com/en-us/azure/logic-apps/logic-apps-securing-a-logic-app>

QUESTION 14

You are the global administrator for an Azure Active Directory (Azure AD) tenant named adatum.com.

You need to enable two-step verification for Azure users.

What should you do?

- A. Create a sign-in risk policy in Azure AD Identity Protection
- B. Enable Azure AD Privileged Identity Management.
- C. Create and configure the Identity Hub.
- D. Configure a security policy in Azure Security Center.

Correct Answer: A

With Azure Active Directory Identity Protection, you can:

require users to register for multi-factor authentication

handle risky sign-ins and compromised users
References: <https://docs.microsoft.com/en-us/azure/active-directory/identity-protection/flows>

QUESTION 15

You are building a custom Azure function app to connect to Azure Event Grid.

You need to ensure that resources are allocated dynamically to the function app. Billing must be based on the executions of the app.

What should you configure when you create the function app?

- A. the Windows operating system and the Consumption plan hosting plan
- B. the Windows operating system and the App Service plan hosting plan
- C. the Docker container and an App Service plan that uses the BI1 pricing tier
- D. the Docker container and an App Service plan that uses the SI pricing

Correct Answer: A

Azure Functions runs in two different modes: Consumption plan and Azure App Service plan. The Consumption plan automatically allocates compute power when your code is running. Your app is scaled out when needed to handle load, and scaled down when code is not running.

QUESTION 16

You need to meet the technical requirement for VM4. What should you create and configure?

- A. an Azure Notification Hub
- B. an Azure Event Hub
- C. an Azure Logic App
- D. an Azure services Bus

Correct Answer: B

Scenario: Create a workflow to send an email message when the settings of VM4 are modified.

You can start an automated logic app workflow when specific events happen in Azure resources or third-party resources. These resources can publish those events to an Azure event grid. In turn, the event grid pushes those events to

subscribers that have queues, webhooks, or event hubs as endpoints. As a subscriber, your logic app can wait for those events from the event grid before running automated workflows to perform tasks - without you writing any code.

References:

<https://docs.microsoft.com/en-us/azure/event-grid/monitor-virtual-machine-changes-event-grid-logic-app> Topic 5, Mix Questions Set C (Evaluate and perform server migration to Azure)

QUESTION 17

You have a Microsoft SQL Server Always On availability group on Azure virtual machines. You need to configure an Azure internal load balancer as a listener for the availability group. What should you do?

- A. Enable Floating IP.
- B. Set Session persistence to Client IP and protocol.
- C. Set Session persistence to Client IP.
- D. Create an HTTP health probe on port 1433.

Correct Answer: A

QUESTION 18

You plan to move services from your on-premises network to Azure.

You identify several virtual machines that you believe can be hosted in Azure. The virtual machines are shown in the following table.

Name	Role	Operating system (OS)	Environment
Sea-DC01	Domain controller	Windows Server 2016	Hyper-V on Windows Server 2016
NYC-FS01	File server	Windows Server 2012 R2	Vmware vCenter Server 5.1
BOS-DB01	Microsoft SQL server	Windows Server 2016	Vmware vCenter Server 6
Sea-CA01	Certification authority (CA)	Windows Server 2012 R2	Hyper-V on Windows Se
Hou-NW01	DHCP/DNS	Windows Server 2008 R2	Vmware vCenter Sen

Which two virtual machines can you access by using Azure migrate? Each correct answer presents a complete solution. NOTE: Each correct selection is worth one point.

- A. Sea-CA01
- B. Hou-NW01
- C. NYC-FS01
- D. Sea-DC01
- E. BOS-DB01

Correct Answer: CE

QUESTION 19

Note: This question is part of a series of questions that present the same scenario. Each question in the series contains a unique solution that might meet the stated goals. Some question sets might have more than one correct solution, while

others might not have a correct solution.

After you answer a question in this section, you will NOT be able to return to it As a result these questions will not appear in the review screen.

You have an Azure web app named App1. App1 runs in an Azure App Service plan named Plan1. Plan1 is associated to the Free pricing tier.

You discover that App1 stops each day after running continuously for 60 minutes.

You need to ensure that App1 can run continuously for the entire day.

Solution: You change the pricing tier of Plan1 to Shared.

Does this meet the goal?

- A. Yes
- B. No

Correct Answer: B

You should switch to the Basic Tier.

The Free Tier provides 60 CPU minutes / day. This explains why App1 is stops. The Shared Tier provides 240 CPU minutes / day. The Basic tier has no such cap.

References:

<https://azure.microsoft.com/en-us/pricing/details/app-service/windows/>

QUESTION 20

You have an on-premises network that contains a Hyper-V host named Host1. Host1 runs Windows Server 2016 and hosts 10 virtual machines that run Windows Server 2016.

You plan to replicate the virtual machines to Azure by using Azure Site Recovery.

You create a Recovery Services vault named ASR1 and a Hyper-V site named Site1.

You need to add Host1 to ASR1.

What should you do?

- A. Download the installation file for the Azure Site Recovery Provider. Download the vault registration key. Install the Azure Site Recovery Provider on Host1 and register the server.
- B. Download the installation file for the Azure Site Recovery Provider. Download the storage account key. Install the Azure Site Recovery Provider on Host1 and register the server.
- C. Download the installation file for the Azure Site Recovery Provider. Download the vault registration key. Install the

Azure Site Recovery Provider on each virtual machine and register the virtual machines.

D. Download the installation file for the Azure Site Recovery Provider. Download the storage account key. Install the Azure Site Recovery Provider on each virtual machine and register the virtual machines.

Correct Answer: A

Download the Vault registration key. You need this when you install the Provider. The key is valid for five days after you generate it. Install the Provider on each VMM server. You don't need to explicitly install anything on Hyper-V hosts.

[AZ-101 PDF Dumps](#)

[AZ-101 Exam Questions](#)

[AZ-101 Braindumps](#)

To Read the [Whole Q&As](#), please purchase the [Complete Version](#) from [Our website](#).

Try our product !

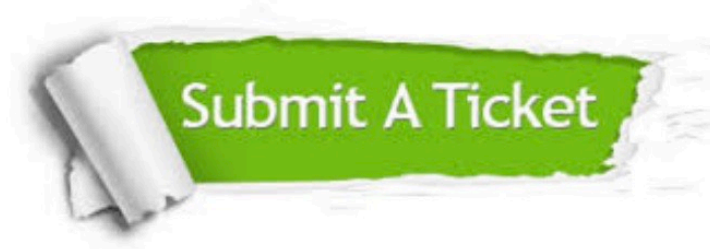
100% Guaranteed Success
100% Money Back Guarantee
365 Days Free Update
Instant Download After Purchase
24x7 Customer Support
Average 99.9% Success Rate
More than 800,000 Satisfied Customers Worldwide
Multi-Platform capabilities - [Windows](#), [Mac](#), [Android](#), [iPhone](#), [iPod](#), [iPad](#), [Kindle](#)

We provide exam PDF and VCE of Cisco, Microsoft, IBM, CompTIA, Oracle and other IT Certifications.
You can view Vendor list of All Certification Exams offered:

<https://www.certbus.com/allproducts>

Need Help

Please provide as much detail as possible so we can best assist you.
To update a previously submitted ticket:



 <p>One Year Free Update Free update is available within One Year after your purchase. After One Year, you will get 50% discounts for updating. And we are proud to boast a 24/7 efficient Customer Support system via Email.</p>	 <p>Money Back Guarantee To ensure that you are spending on quality products, we provide 100% money back guarantee for 30 days from the date of purchase.</p>	 <p>Security & Privacy We respect customer privacy. We use McAfee's security service to provide you with utmost security for your personal information & peace of mind.</p>
---	---	--

Any charges made through this site will appear as Global Simulators Limited.
All trademarks are the property of their respective owners.
Copyright © certbus, All Rights Reserved.