

# ACMP\_6.4<sup>Q&As</sup>

Aruba Certified Mobility Professional 6.4

**Pass Aruba ACMP\_6.4 Exam with 100% Guarantee**

Free Download Real Questions & Answers **PDF** and **VCE** file from:

[https://www.certbus.com/acmp\\_6-4.html](https://www.certbus.com/acmp_6-4.html)

100% Passing Guarantee  
100% Money Back Assurance

Following Questions and Answers are all new published by Aruba  
Official Exam Center

- ⚙️ **Instant Download** After Purchase
- ⚙️ **100% Money Back** Guarantee
- ⚙️ **365 Days** Free Update
- ⚙️ **800,000+** Satisfied Customers



### QUESTION 1

How does the ARM Band Steering feature encourage 5GHz capable clients to move/connect to the 5GHz radios of Aruba APs?

- A. ARM suppresses the probe responses on the 2.4 ghz radio?
- B. ARM utilizes third party software on the wireless clients
- C. Current Wi-Fi chipset firmware supports this by default
- D. It's not possible to move clients to 5GHz radios when they can see both 2.4 and 5GHz APs
- E. ARM disables the 2.4Ghz radio for the specified client

Correct Answer: A

---

### QUESTION 2

A client device associates with an SSID provisioned with 802.1X authentication. The client is set for PEAP authentication. EAP termination (AAA Fastconnect) is disabled on the controller. But the client continuously cycles through the authentication process. Which of the following could cause this? (Choose two)

- A. The client is provisioned with the wrong EAP type.
- B. The client has an expired or revoked server certificate.
- C. The DHCP server is not enabled.
- D. The VLAN is missing for the SSID.
- E. The controller does not support PEAP in this mode.

Correct Answer: AB

---

### QUESTION 3

The Master fails with Central Licensing enabled. What happens to the local Controllers?

- A. Locals continue to operate for 1 day
- B. Locals operate for 30 days and accept new APs
- C. Locals continue to operate for 90 days and accepts new APs
- D. Locals can only use their originally installed Licenses
- E. Locals will operate with active APs but not will accept any other APs

Correct Answer: B

---

#### QUESTION 4

Fast Failover has been implemented between Local 1 and Local 2 separated by Routers. During testing Local1 was disabled and all Campus APs backed up to Local 2 flawlessly. But the RAPs did not, they all failed.

What could be the cause?

- A. RAPs should be configured in their own AP-groups
- B. A VPN IP Pool must be configured on Local 2
- C. The RAP whitelist must be ported over to Local 2
- D. IPSec must be enabled on Local 2
- E. RAPs are not supported by Fast Failover

Correct Answer: E

---

#### QUESTION 5

An administrator wants to assign a VLAN to a user based upon the authentication process using Vendor Specific Attributes (VSA). Where are Aruba Vendor Specific Attribute (VSA) values provisioned?

- A. controller
- B. client
- C. RADIUS server
- D. Internal user database
- E. Option 60 of DHCP reply

Correct Answer: C

---

#### QUESTION 6

Which log type should be enabled to troubleshoot IPSec authentication issues on Aruba Controllers?

- A. Security Logs
- B. Management Logs
- C. Wireless Logs
- D. IDS Logs

E. System Logs

Correct Answer: A

---

#### QUESTION 7

Which of the following will occur if a master license server fails with no standby server present? (Choose two)

- A. Local controllers licenses will continue to be valid for 30 days
- B. Local controllers will immediately remove all installed licenses
- C. No licenses will be sent to any new controllers that come online
- D. All licenses go back into the pool for redistribution
- E. A Local Controller elects itself master license server

Correct Answer: AC

---

#### QUESTION 8

Which of the following APs do NOT support dual radio operations? (Choose two)

- A. AP 93
- B. AP 105
- C. RAP 3WN
- D. AP 224
- E. AP 135

Correct Answer: AC

---

#### QUESTION 9

A company purchased an indoor mesh deployment using the 7005 controller and the AP 115 models, where 5 APs will be deployed on a floor to provide wireless internet access for users. Users may open VPN tunnels using software clients over the wireless network to a 3rd party VPN concentrator overseas. The company wants to limit wireless user access to TCP traffic locally and VPN traffic overseas. In addition to the base AOS, which licenses will be necessary for this deployment?

- A. VPN, PEF-NG
- B. AP Capacity, PEF-NG
- C. AP Capacity, PEF-NG, VPN
- D. AP Capacity

E. PEF-NG, PEF-V

Correct Answer: B

---

#### QUESTION 10

An AP 105 was converted into a RAP. The RAP can authenticate its IPsec tunnel to a controller using which of the following methods? (Choose two.)

- A. 802.1XjEAP authentication
- B. Captive Portal authentication
- C. IP address authentication
- D. Username/Password authentication.
- E. Certificate/MAC address authentication.

Correct Answer: DE

---

#### QUESTION 11

How is an AP redirected to a Local controller after DNS resolution returns the Master's IP address?

- A. Master looks at the AP-Group and CONTROLLER-IP attributes
- B. Master looks at the AP-Group and LMS-IP attributes
- C. In the AP-provisioning screen, the LMS-IP attribute must be set
- D. The AP must be statically configured to find the local controller
- E. In the AP-provisioning screen, set the CONTROLLER-IP attribute

Correct Answer: B

---

#### QUESTION 12

Which may be applied directly to a VLAN interface? (Choose three)

- A. Access List (ACL)
- B. Firewall Policy
- C. Roles
- D. AAAprofiles
- E. RF Plan Map

Correct Answer: ABD

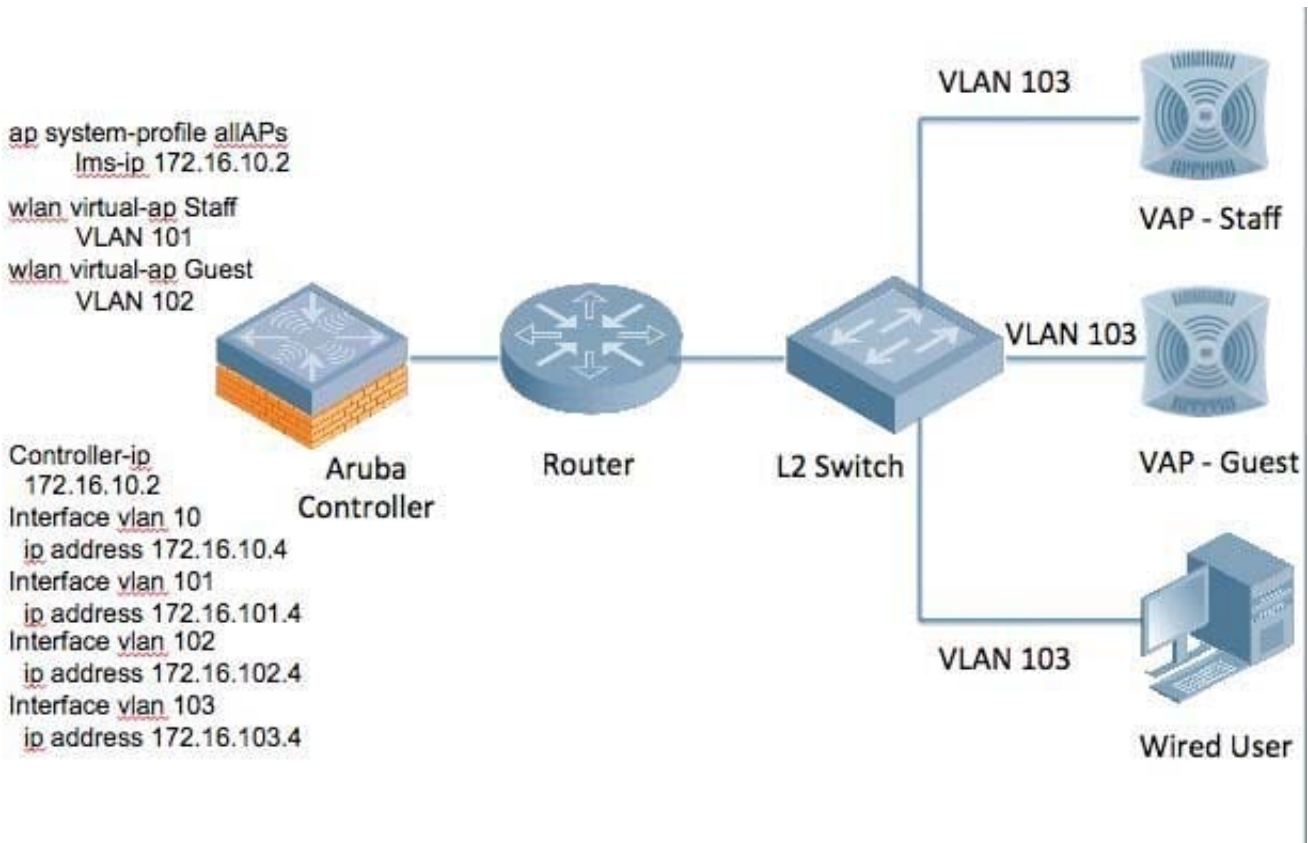
**QUESTION 13**

With Fast-Failover disabled, to which IP address should the Aruba AP terminate its GRE tunnel for layer 2 controller redundancy to work and to support failover of access points?

- A. VRRP IP address
- B. management IP of an Aruba controller
- C. management IP of the backup Aruba controller
- D. HSRP IP address
- E. Loopback IP address of backup Aruba controller

Correct Answer: A

**QUESTION 14**



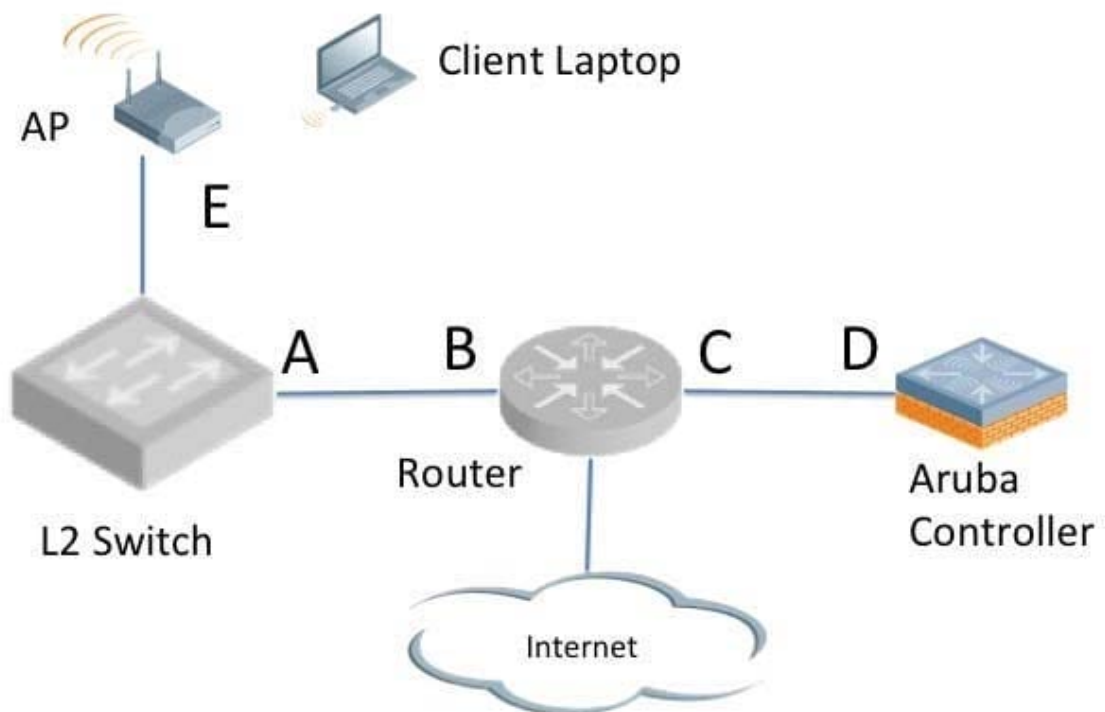
In the above diagram, the system shows two Aruba access points. Which VLANs must be configured on trunk link D between the router and Aruba controller to support wireless users when the controller is provisioned for L2 operations?

- A. 10, 101 and 102

- B. 101 and 102
- C. 101, 102 and 103
- D. 10, 101, 102 and 103
- E. 10 and 103

Correct Answer: A

**QUESTION 15**



Referring to the diagram provided for this question, if the Aruba controller is configured to perform L3 switching, what will be the wireless client laptop default gateway?

- A. A
- B. B
- C. C
- D. D

E. E

Correct Answer: D

[ACMP\\_6.4 Study Guide](#)

[ACMP\\_6.4 Exam Questions](#)

[ACMP\\_6.4 Braindumps](#)