

642-647^{Q&As}

Deploying Cisco ASA VPN Solutions (VPN v1.0)

Pass Cisco 642-647 Exam with 100% Guarantee

Free Download Real Questions & Answers **PDF** and **VCE** file from:

<https://www.certbus.com/642-647.html>

100% Passing Guarantee
100% Money Back Assurance

Following Questions and Answers are all new published by Cisco
Official Exam Center

- ⚙ **Instant Download** After Purchase
- ⚙ **100% Money Back** Guarantee
- ⚙ **365 Days** Free Update
- ⚙ **800,000+** Satisfied Customers



QUESTION 1

Refer to the exhibit.

```
access-list outside_cryptomap_1 line 1 extended deny tcp any host 10.0.4.4 eq https
access-list outside_cryptomap_1 line 1 extended permit tcp any host 10.0.4.0 255.255.255.0 eq https
crypto map outside_map 1 match address outside_cryptomap_1
```

In the CLI snippet that is shown, what is the function of the deny option in the access list?

- A. When set in conjunction with outbound connection-type bidirectional, its function is to prevent the specified traffic from being protected by the crypto map entry.
- B. When set in conjunction with connection-type originate-only, its function is to instruct the Cisco ASA to deny specific inbound traffic if it is not encrypted.
- C. When set in conjunction with outbound connection-type answer-only, its function is to instruct the Cisco ASA to deny specific outbound traffic if it is not encrypted.
- D. When set in conjunction with connection-type originate-only, its function is to cause all IP traffic that matches the specified conditions to be protected by the crypto map.

Correct Answer: A

QUESTION 2

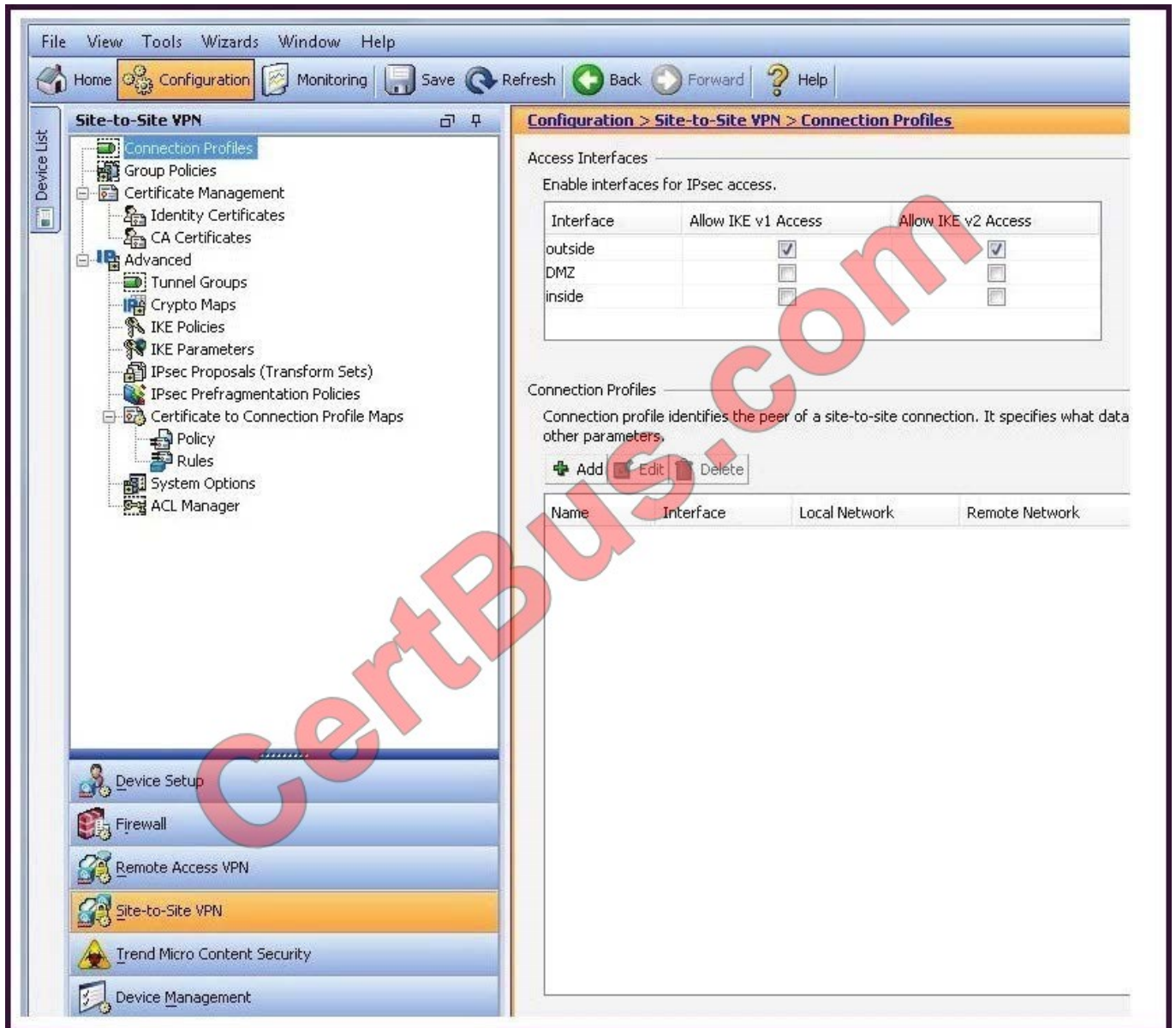
Which three statements about clientless SSL VPN are true? (Choose three.)

- A. Users are not tied to a particular PC or workstation.
- B. Users have full application access to internal corporate resources.
- C. Minimal IT support is required.
- D. Cisco AnyConnect SSL VPN software is automatically downloaded to the remote user at the start of the clientless session.
- E. For security reasons, browser cookies are disabled for clientless SSL VPN sessions.
- F. Clientless SSL VPN requires an SSL-enabled web browser.

Correct Answer: ACF

QUESTION 3

Refer to the exhibit.



You are the network security administrator. You have received calls from site-to-site IPsec VPN users saying that they cannot connect into the network. In troubleshooting this problem, you discover that some sites can connect, but other sites cannot. It is not always the same sites experiencing problems. You suspect that the permitted number of simultaneous logins has been reached and needs to be increased.

In which configuration window or tab should you accomplish this task?

- A. in the IKE Policies window
- B. in the IKE Parameters window
- C. in the System Options window
- D. in the Device Management tab

Correct Answer: C

QUESTION 4

Refer to the exhibit.

```
tunnel-group BASIC-ANYCONNECT-PROFILE general-attributes
 authentication-server-group MY-RADIUS-SVRS
 secondary-authentication-server-group MY-LDAP-SVRS
!
tunnel-group BASIC-ANYCONNECT-PROFILE webvpn-attributes
 authentication aaa
```

Given the example that is shown, what can you determine?

- A. Users are required to perform RADIUS or LDAP authentication when connecting with the Cisco AnyConnect client.
- B. Users are required to perform AAA authentication when connecting via WebVPN.
- C. Users are required to perform double AAA authentication.
- D. The user access identity is prefilled at login, requiring users to enter only their password.

Correct Answer: C

QUESTION 5

Refer to the exhibit.

```
access-list temp_acl webtype permit url http://10.0.4.10
webvpn
 enable outside
 svc enable
 tunnel-group-list enable
 group-policy temp_worker internal
 group-policy temp_worker attributes
 banner value Welcome Temp Workers!
 vpn-tunnel-protocol webvpn
 vlan 100
 webvpn
 url-list value Corporate_Server
 url-entry disable
 group-policy Default attributes
 vpn-tunnel-protocol IPSec svc webvpn
 webvpn
 url-list value Corporate_Server
 filter value temp_acl
 username temp1 password cisco
```

```
username temp1 attributes
 vpn-group-policy temp_worker
 vpn-tunnel-protocol webvpn
 group-lock value temp_worker
 service-type remote-access
 webvpn
 file-browsing disable
 file-entry enable
 url-entry disable
 hidden-shares none
 url-list value Corporate_Server
 customization value temp_worker
 tunnel-group temp_worker type remote-access
 tunnel-group temp_worker general-attributes
 default-group-policy temp_worker
 tunnel-group temp_worker webvpn-attributes
 customization temp_worker
 group-alias temp_worker enable
 group-url https://192.168.4.2/temp_worker enable
```

A junior network engineer configured the corporate Cisco ASA appliance to accommodate a new temporary worker. For security reasons, the IT department wants to restrict the internal network access of the new temporary worker to the corporate server, with an IP address of 10.0.4.10. After the junior network engineer finished the configuration, an IT security specialist tested the account of the temporary worker. The tester was able to access the URLs of additional

secure servers from the WebVPN user account of the temporary worker.

What did the junior network engineer configure incorrectly?

- A. The ACL was configured incorrectly.
- B. The ACL was applied incorrectly or was not applied.
- C. Network browsing was not restricted on the temporary worker group policy.
- D. Network browsing was not restricted on the temporary worker user policy.

Correct Answer: B

QUESTION 6

Which three options are characteristics of WebType ACLs? (Choose three.)

- A. They are assigned per-connection profile.
- B. They are assigned per-user or per-group policy.
- C. They can be defined in the Cisco AnyConnect Profile Editor.
- D. They support URL pattern matching.
- E. They support implicit deny all at the end of the ACL.
- F. They support standard and extended WebType ACLs.

Correct Answer: BDE

QUESTION 7

Select and Place:

Match the characteristic on the left with the correct transport layer protocol on the right.

used to tunnel traffic over TCP 443	TLS <div></div> <div></div> <div></div>
replaced underlying transport layer with UDP 443	
enabled by default	
requires retransmission of lost packets	DTLS <div></div> <div></div> <div></div>
used to transmit datagrams	
Used to negotiate control messages	

Correct Answer:

Match the characteristic on the left with the correct transport layer protocol on the right.

	TLS <div>used to tunnel traffic over TCP 443</div> <div>requires retransmission of lost packets</div> <div>Used to negotiate control messages</div>
	DTLS <div>replaced underlying transport layer with UDP 443</div> <div>enabled by default</div> <div>used to transmit datagrams</div>

QUESTION 8

Refer to the exhibit.

```
access-list temp_acl webtype permit tcp host 10.0.4.4 eq 3389 log default
webvpn
  memcry-size percent 25
  enable outside
  svc enable
  tunnel-group-list enable
  rewrite order 10 disable resource-mask *://cisco.com/* name cisco-com-bypass
  smart-tunnel list Smart_tunnel_applications Microsoft-RDP-Client MSTSC.EXE platform
windows
group-policy temp_worker internal
group-policy temp_worker attributes
  banner value Welcome Temp Workers!
vpn-tunnel-protocol svc webvpn
webvpn
  url-list value temp_worker
  filter value temp_acl
  customization value temp_worker
  smart-tunnel auto-start Smart_tunnel_applications
  file-entry disable
  file-browsing disable
  url-entry disable
group-policy DfltGrpPolicy attributes
vpn-tunnel-protocol IPSec svc webvpn
webvpn
  url-list value Corporate_Server
tunnel-group temp_worker type remote-access
tunnel-group temp_worker general-attributes
  default-group-policy temp_worker
tunnel-group temp_worker webvpn-attributes
  customization temp_worker
group-alias temp_worker enable
group-url https://192.168.4.2/temp_worker enable
```

The ABC Corporation has a Cisco ASA in its test bed. A new network administrator is instructed to add a smart tunnel application to the existing configuration. The configuration will enable a "temp_worker" who is using Microsoft native RDP to have RDP access to server 10.0.4.4 only.

Which statement is correct concerning the smart-tunnel configuration?

- A. The WebType access list is misconfigured.
- B. The smart tunnel list parameter is misconfigured.
- C. The smart tunnel group policy parameters are misconfigured.
- D. The smart tunnel configuration is configured correctly.

Correct Answer: D

QUESTION 9

The software-based Cisco IPsec VPN Client solution uses bidirectional authentication, in which the client authenticates the Cisco ASA, and the Cisco ASA authenticates the user. Which three methods are software-based Cisco IPsec VPN Client to Cisco ASA authentication methods? (Choose three.)

- A. Unified Client Certificate authentication
- B. Secure Unit authentication
- C. Hybrid authentication
- D. Certificate authentication
- E. Group authentication

Correct Answer: CDE

QUESTION 10

An on-screen keyboard is a programmable SSL VPN option. Which three options are keyboard- configurable parameters that the administrator can enable or disable? (Choose three.)

- A. Show only if Secure Desktop Vault is disabled.
- B. Do not show onscreen keyboard.
- C. Show only for the login page.
- D. Show for all user input fields.
- E. Show for all portal pages that require authentication.
- F. Show for all plug-in pages.

Correct Answer: BCE

QUESTION 11

Refer to the exhibit.

Rule	Priority	Mapped to Connection Profile
employee	10	employee
management	15	management

Field	Operator	Value
Certificate Map Name (OU)	Equals	abc_corp

Rule	Priority	Mapped to Connection Profile
employee	10	employee
management	15	management

Field	Operator	Value
Certificate Map Name (OU)	Equals	abc_corp

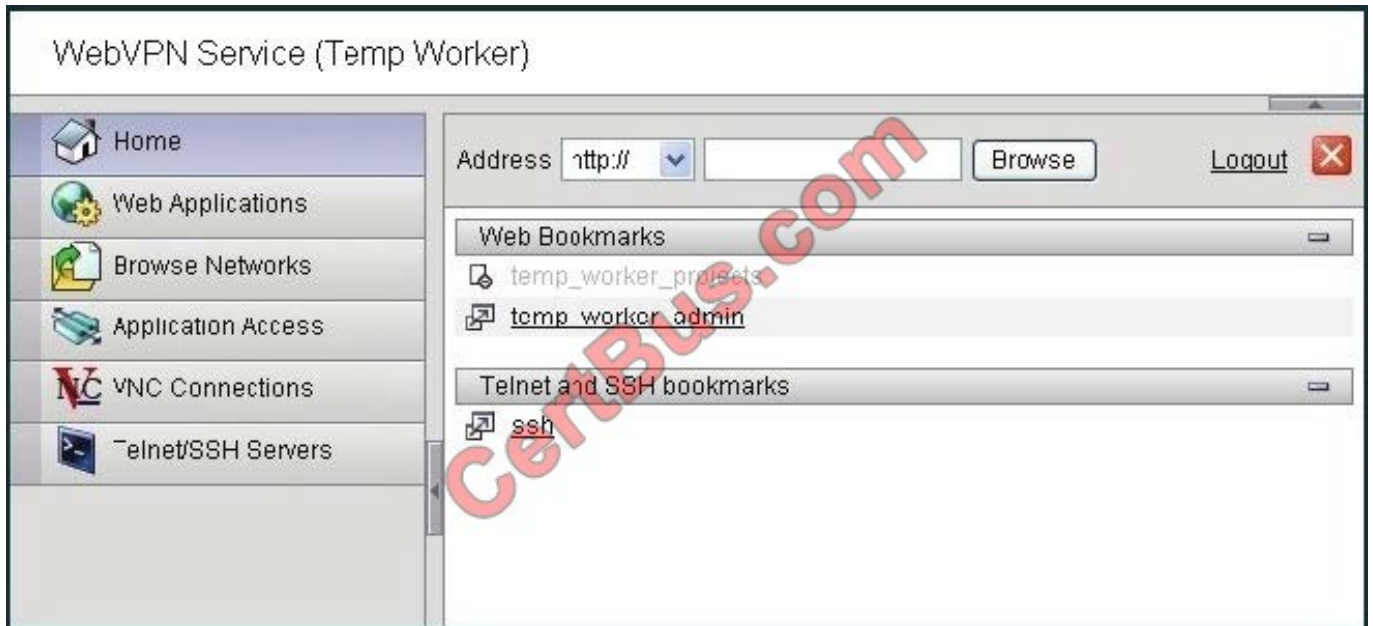
You have configured two SSL VPN Certificate to Connection Profile Maps for all employee and management users. The Connection Profiles for the management users are not being applied when the "management" users connect. Based on the configuration that is shown, what is the most likely cause of this issue?

- A. The rule priority of the employee mapping is not low enough, and it needs to be lowered to 1.
- B. The priority of the employee mapping is too low, and it needs to be increased, but not higher than the rule priority of the management mapping.
- C. The priority of the management mapping is too high, and it needs to be lower than the rule priority of the employee mapping.
- D. The matching criteria for the management mapping is too specific, and the CN matching parameter should be removed.

Correct Answer: C

QUESTION 12

Refer to the exhibit.



Today was the first day on a new project for an offsite temporary worker at the XYZ Corporation. The worker was told to launch the SSL VPN session and then use the smart tunnel application to start a remote desktop application on the project server, projects_server.xyz.com. The worker looked at the portal screen that was provided, but she did not know how to access the smart tunnel application.

As the help desk person, what should you instruct the temporary worker to do?

- A. Click the Web Applications button.
- B. Click the Applications Access button.
- C. Click the Browse Networks button.
- D. On the Home page, click the Address drop-down menu, choose RDP://, and fill in the destination host name, which is projects_server.abc.com.

Correct Answer: B

[642-647 PDF Dumps](#)

[642-647 Exam Questions](#)

[642-647 Braindumps](#)

To Read the [Whole Q&As](#), please purchase the [Complete Version](#) from [Our website](#).

Try our product !

100% Guaranteed Success

100% Money Back Guarantee

365 Days Free Update

Instant Download After Purchase

24x7 Customer Support

Average 99.9% Success Rate

More than 800,000 Satisfied Customers Worldwide

Multi-Platform capabilities - [Windows](#), [Mac](#), [Android](#), [iPhone](#), [iPod](#), [iPad](#), [Kindle](#)

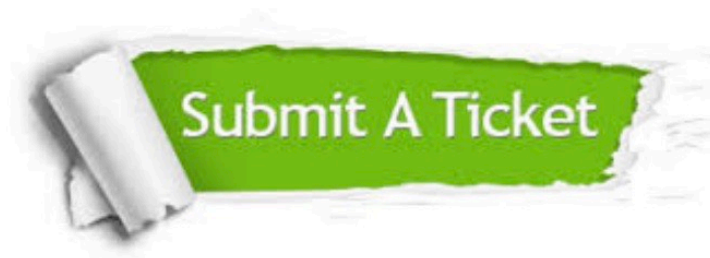
We provide exam PDF and VCE of Cisco, Microsoft, IBM, CompTIA, Oracle and other IT Certifications.
You can view Vendor list of All Certification Exams offered:

<https://www.certbus.com/allproducts>

Need Help

Please provide as much detail as possible so we can best assist you.

To update a previously submitted ticket:



 One Year Free Update Free update is available within One Year after your purchase. After One Year, you will get 50% discounts for updating. And we are proud to boast a 24/7 efficient Customer Support system via Email.	 Money Back Guarantee To ensure that you are spending on quality products, we provide 100% money back guarantee for 30 days from the date of purchase.	 Security & Privacy We respect customer privacy. We use McAfee's security service to provide you with utmost security for your personal information & peace of mind.
---	---	--

Any charges made through this site will appear as Global Simulators Limited.

All trademarks are the property of their respective owners.

Copyright © certbus, All Rights Reserved.