

# 400-101<sup>Q&As</sup>

CCIE Routing and Switching Written

**Pass Cisco 400-101 Exam with 100% Guarantee**

Free Download Real Questions & Answers **PDF** and **VCE** file from:

<https://www.certbus.com/400-101.html>

100% Passing Guarantee  
100% Money Back Assurance

Following Questions and Answers are all new published by Cisco  
Official Exam Center

-  **Instant Download** After Purchase
-  **100% Money Back** Guarantee
-  **365 Days** Free Update
-  **800,000+** Satisfied Customers



### QUESTION 1

Refer to the exhibit. What is the minimum size of a packet that can be sent successfully from R3 to 10.1.2.1 without enabling fragmentation?

```
R3#ping
Protocol [ip]:
Target IP address: 10.1.2.1
Repeat count [5]: 1
Datagram size [100]:
Timeout in seconds [2]:
Extended commands [n]: yes
Source address or interface:
Type of service [0]:
Set DF bit in IP header? [no]: yes
Validate reply data? [no]:
Data pattern [0xABCD]: 0xAAAA
Loose, Strict, Record, Timestamp, Verbose[none]:
Sweep range of sizes [n]: y
Sweep min size [36]: 1480
Sweep max size [18024]: 1500
Sweep interval [1]:
Type escape sequence to abort.
Sending 21, [1480..1500]-byte ICMP Echos to 10.1.2.1, timeout is 2 seconds:
Packet sent with the DF bit set
Packet has data pattern 0xAAAA
!!!!!!!!!!!!MMMMMMMM
Success rate is 52 percent (11/21), round-trip min/avg/max = 16/21/36 ms
```

- A. 1521 bytes
- B. 1501 bytes
- C. 1479 bytes
- D. 1500 bytes
- E. 1480 bytes
- F. 1490 bytes

Correct Answer: F

### QUESTION 2

Which two statements about SPAN and RSPAN are true? (Choose two.)

- A. Only RSPAN sends monitored traffic to a dedicated VLAN.

- B. Only RSPAN is limited to monitoring VLANs.
- C. Only SPAN is limited to monitoring switch ports.
- D. Only RSPAN can monitor extended VLANs.
- E. Only SPAN sends monitored traffic to a local physical port.

Correct Answer: DE

---

### QUESTION 3

Which three fields are present in the IPv6 header? (Choose three.)

- A. Time to Live
- B. Traffic Class
- C. Flow Label
- D. Flags
- E. Next Header
- F. Options

Correct Answer: BCE

---

### QUESTION 4

Which option describes how a VTPv3 device responds when it detects a VTPv2 device on a trunk port?

- A. It sends VTPv2 packets only
- B. It sends a Special packet that contains VTPv3 and VTPv2 packets information.
- C. It sends VTPv3 packets only.
- D. It sends VTPv3 and VTPv2 packets.

Correct Answer: D

---

### QUESTION 5

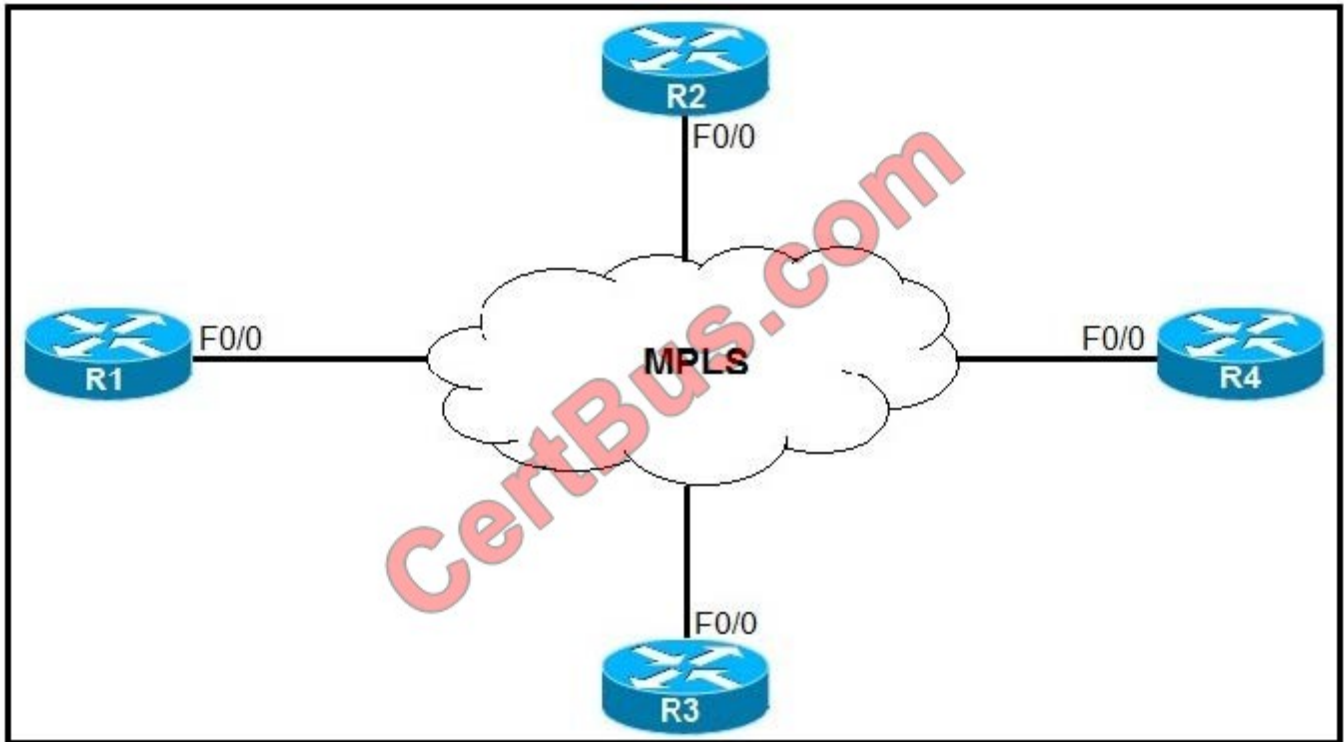
Which keychain cryptographic algorithm is supported by the IS-IS routing protocol?

- A. HMAC-SHA1-20
- B. MD5
- C. HMAC-SHA1-12

D. HMAC-MD5

Correct Answer: D

**QUESTION 6**



Refer to the exhibit. Which IS-IS network type is enabled by default on this network?

- A. non-broadcast multi-access
- B. point-to-multipoint
- C. broadcast
- D. point-to-point

Correct Answer: C

Reference: <https://www.cisco.com/c/en/us/support/docs/ip/integrated-intermediate-system-to-intermediate-system-is-is/200293-IS-IS-Adjacency-and-Area-Types.html>

**QUESTION 7**

Drag and Drop

Select and Place:

Reported metric to the neighbor router	Reported distance
Best metric along a path to the destination including the metric to the neighbor	Feasible distance
Best metric along a path to the feasible successor	Feasible successor
Path with a reported distance lower than the feasible distance	
Total metric along path to the destination as advertised by the upstream neighbor	

Correct Answer:

Reported metric to the neighbor router	Total metric along path to the destination as advertised by the upstream neighbor
	Best metric along a path to the destination including the metric to the neighbor
Best metric along a path to the feasible successor	Path with a reported distance lower than the feasible distance

**QUESTION 8**

Drag and drop each IS-IS router type from the left onto the best matching OSPF router type on the right.

Select and Place:

DIS	ABR
Level 1	designated router
Level 1-2	Internal backbone
Level 2	Totally Stubby internal nonbackbone

Correct Answer:



#### QUESTION 9

Which three criteria are used for stackwise election of a master switch?

- A. VLAN revision number
- B. longest uptime
- C. highest MAC address
- D. user-selected priority
- E. IOS version number
- F. lowest MAC address

Correct Answer: BDF

#### QUESTION 10

When multiple AAA authentication methods are specified in a method list and all are working normally, how is the user authenticated?

- A. The user is authenticated against all provided authentication sources and granted the most restricted set of access privileges.
- B. The user is authenticated against the first listed authentication source only.
- C. The user is authenticated against the provided authentication sources in order until a match is found.
- D. The user is authenticated against all provided authentication sources and granted the least restricted set of access privileges.

Correct Answer: B



### QUESTION 11

Which two statements about migrating a network from PVST+ to MST are true? (Choose two.)

- A. Root Guard and BPDU Guard will be unaffected by the migration.
- B. Switches migrated to MST will continue to interoperate with unmigrated switches.
- C. Loop Guard and BPDU Filter are disabled automatically during the migration.
- D. While the migration is underway, unmigrated switches treat the migrated switches in the MST region as individual switches.
- E. Before migrating to MST, all PVST+ switches must first be migrated to Rapid-PVST+.

Correct Answer: BD

### QUESTION 12

Refer to the exhibit.

```
R2#
*Jun 17 10:21:06.407: IPSEC(validate_proposal_request): proposal part #1
*Jun 17 10:21:06.411: IPSEC(validate_proposal_request): proposal part #1,
(key eng. msg.) INBOUND local= 172.16.1.101:0, remote= 172.16.1.100:0,
local_proxy= 0.0.0.0/0.0.0.0/256/0,
remote_proxy= 0.0.0.0/0.0.0.0/256/0,
protocol= ESP, transform= NONE (Tunnel),
lifedur= 0s and 0kb,
spi= 0x0(0), conn_id= 0, keysize= 256, flags= 0x0
*Jun 17 10:21:06.419: IPSEC(ipsec_process_proposal): proxy identities not supported

R2#
*Jun 17 10:38:06.263: IPSEC(validate_proposal_request): proposal part #1
*Jun 17 10:21:38.261: IPSEC(validate_proposal_request): proposal part #1,
(key eng. msg.) INBOUND local= 172.16.1.101:0, remote= 172.16.1.100:0,
local_proxy= 0.0.0.0/0.0.0.0/256/0,
remote_proxy= 0.0.0.0/0.0.0.0/256/0,
protocol= ESP, transform= NONE (Tunnel),
lifedur= 0s and 0kb,
spi= 0x0(0), conn_id= 0, keysize= 256, flags= 0x0
*Jun 17 10:21:38.275: IPSEC(ipsec_process_proposal): proxy identities not supported
```

While troubleshooting the failure of two establish an IPsec tunnel, you generated the given debug output on R2. What is the most likely reason the tunnel failed?

- A. Main Mode processing failed on the peer.
- B. R2 was unable to connect to the peer.

C. Main Mode processing failed on R2.

D. The ACLs are mismatched on the devices.

Correct Answer: D

[Latest 400-101 Dumps](#)

[400-101 Practice Test](#)

[400-101 Study Guide](#)



To Read the [Whole Q&As](#), please purchase the [Complete Version](#) from [Our website](#).

## Try our product !

100% Guaranteed Success

100% Money Back Guarantee

365 Days Free Update

Instant Download After Purchase

24x7 Customer Support

Average 99.9% Success Rate

More than 800,000 Satisfied Customers Worldwide

Multi-Platform capabilities - [Windows](#), [Mac](#), [Android](#), [iPhone](#), [iPod](#), [iPad](#), [Kindle](#)

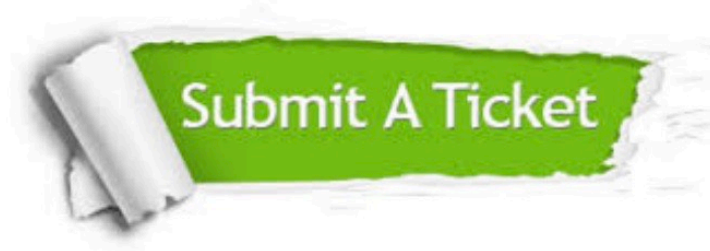
We provide exam PDF and VCE of Cisco, Microsoft, IBM, CompTIA, Oracle and other IT Certifications. You can view Vendor list of All Certification Exams offered:

<https://www.certbus.com/allproducts>

## Need Help

Please provide as much detail as possible so we can best assist you.

To update a previously submitted ticket:



 <p><b>One Year Free Update</b> Free update is available within One Year after your purchase. After One Year, you will get 50% discounts for updating. And we are proud to boast a 24/7 efficient Customer Support system via Email.</p>	 <p><b>Money Back Guarantee</b> To ensure that you are spending on quality products, we provide 100% money back guarantee for 30 days from the date of purchase.</p>	 <p><b>Security &amp; Privacy</b> We respect customer privacy. We use McAfee's security service to provide you with utmost security for your personal information &amp; peace of mind.</p>
---	---	--

Any charges made through this site will appear as Global Simulators Limited.

All trademarks are the property of their respective owners.

Copyright © certbus, All Rights Reserved.