

350-401^{Q&As}

Implementing and Operating Cisco Enterprise Network Core Technologies (ENCOR)

Pass Cisco 350-401 Exam with 100% Guarantee

Free Download Real Questions & Answers **PDF** and **VCE** file from:

<https://www.certbus.com/350-401.html>

100% Passing Guarantee
100% Money Back Assurance

Following Questions and Answers are all new published by Cisco
Official Exam Center

- ⚙ **Instant Download** After Purchase
- ⚙ **100% Money Back** Guarantee
- ⚙ **365 Days** Free Update
- ⚙ **800,000+** Satisfied Customers



QUESTION 1

Which three resources must the hypervisor make available to the virtual machines? (Choose three)

- A. memory
- B. bandwidth
- C. IP address
- D. processor
- E. storage
- F. secure access

Correct Answer: ADE

QUESTION 2

Which mechanism can be used to enforce network access authentication against an AAA server if the endpoint does not support the 802.1X supplicant functionality?

- A. private VLANs
- B. port security
- C. MAC Authentication Bypass
- D. MACsec

Correct Answer: C

QUESTION 3

Which element enables communication between guest VMs within a virtualized environment?

- A. hypervisor
- B. vSwitch
- C. virtual router
- D. pNIC

Correct Answer: B

Each VM is provided with a virtual NIC (vNIC) that is connected to the virtual switch. Multiple vNICs can connect to a single vSwitch, allowing VMs on a physical host to communicate with one another at layer 2 without having to go out to a physical switch.

QUESTION 4

What is the structure of a JSON web token?

- A. three parts separated by dots header payload, and signature
- B. header and payload
- C. three parts separated by dots version header and signature
- D. payload and signature

Correct Answer: A

JSON Web Token (JWT) is an open standard (RFC 7519) that defines a compact and self-contained way for securely transmitting information between parties as a JSON object. This information can be verified and trusted because it is

digitally signed. JWTs can be signed using a secret (with the HMAC algorithm) or a public/private key pair using RSA or ECDSA. JSON Web Tokens are composed of three parts, separated by a dot (.): Header, Payload, Signature. Therefore,

a JWT typically looks like the following:

xxxxx.yyyyy.zzzzz

The header typically consists of two parts: the type of the token, which is JWT, and the signing algorithm being used, such as HMAC SHA256 or RSA. The second part of the token is the payload, which contains the claims. Claims are

statements about an entity (typically, the user) and additional data. To create the signature part you have to take the encoded header, the encoded payload, a secret, the algorithm specified in the header, and sign that.

Reference:

<https://jwt.io/introduction/>

<https://auth0.com/docs/tokens/references/jwt-structure>

QUESTION 5

Which JSON script is properly formatted?

- A.

```
"car":{  
  {  
    "type":"A New Book",  
    "model":"J Doe",  
    "year":"1"  
  }  
}
```
- B.

```
{  
  "host":  
  {  
    "name":"SwitchA,  
    "model":"Catalyst",  
    "serial":"0438045649",  
  }  
}
```
- C.

```
{  
  "book":{  
    {  
      "title":"A New Book,  
      "author":"J P Doe",  
      "edition":"2"  
    }  
  }  
}
```
- D.

```
{  
  "class":{  
    "title":"Science",  
    "grade":"11",  
    "location":"Room C".  
  }  
}
```

A. Option A

B. Option B

C. Option C

D. Option D

Correct Answer: B

QUESTION 6

DRAG DROP

Drag the drop the description from the left onto the routing protocol they describe on the right.

Select and Place:

supports unequal path load balancing	OSPF
link state routing protocol	
distance vector routing protocol	
metric is based on delay and bandwidth by default	EIGRP
makes it easy to segment the network logically	
constructs three tables as part of its operation: neighbor table, topology table, and routing table	

Correct Answer:

	OSPF
	EIGRP

QUESTION 7

Which two threats does AMP4E have the ability to block? (Choose two.)

- A. DDoS
- B. ransomware
- C. Microsoft Word macro attack
- D. SQL injection
- E. email phishing

Correct Answer: BC

<https://www.cisco.com/c/dam/en/us/products/collateral/security/amp-for-endpoints/c11-742008-00-cisco-amp-for-endpoints-wp-v2a.pdf>

QUESTION 8

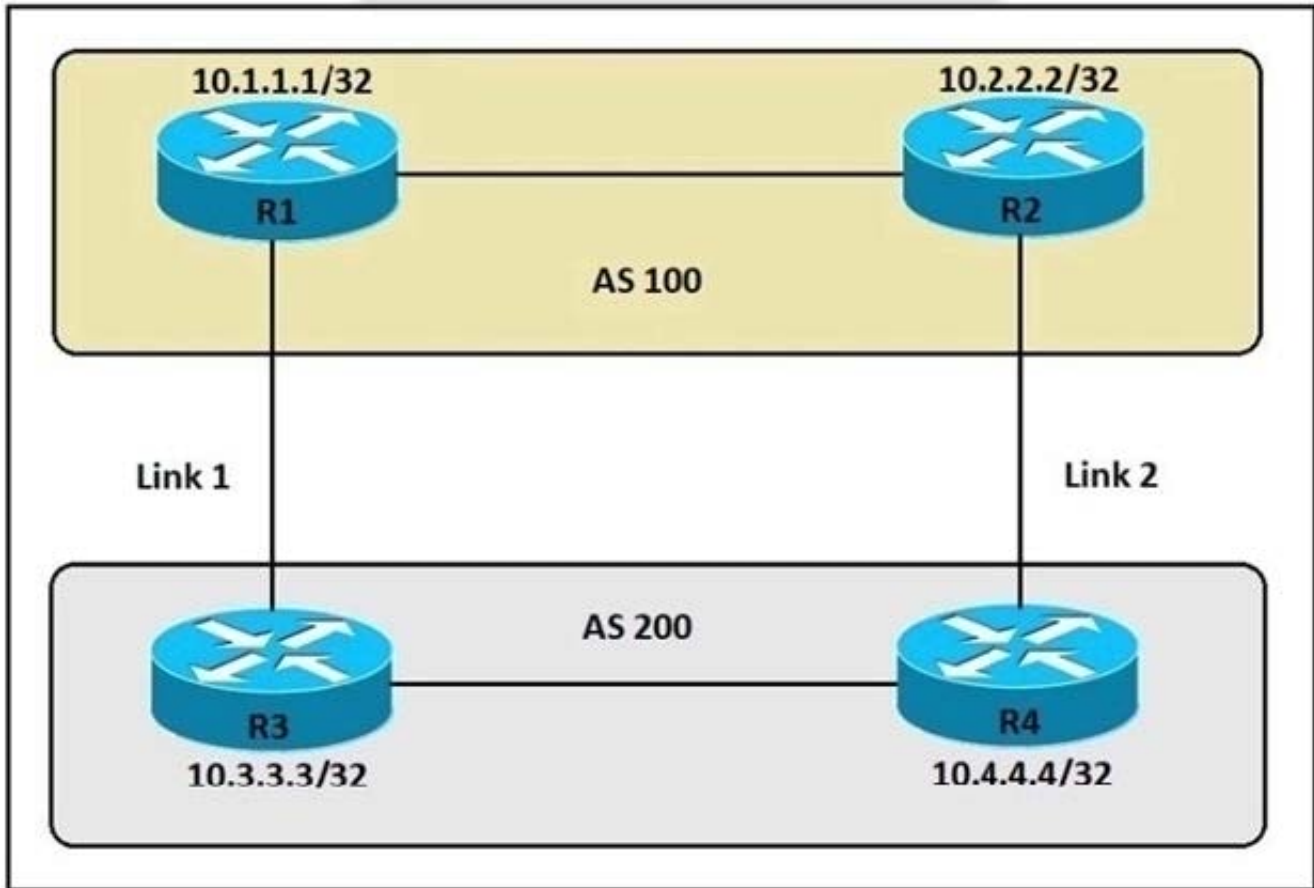
Which Cisco DNA Center Assurance feature verifies host reachability?

- A. path trace
- B. application experience
- C. detail information
- D. network time travel

Correct Answer: A

QUESTION 9

Refer to the exhibit.



An engineer must ensure that all traffic leaving AS 200 will choose Link 2 as the exit point.

Assuming that all BGP neighbor relationships have been formed and that the attributes have not been changed on any of the routers, which configuration accomplishes this task?

- A. R3(config)#route-map PREPEND permit 10 R3(config-route-map)#set as-path prepend 200 200 200
R3(config)#router bgp 200 R3#(config-router)#neighbor 10.1.1.1 route-map PREPEND out
- B. R4(config)#route-map PREPEND permit 10 R4(config-route-map)#set as-path prepend 100 100 100
R4(config)#router bgp 200 R4(config-router)#neighbor 10.2.2.2 route-map PREPEND in
- C. R4(config)#route-map PREPEND permit 10 R4(config-route-map)#set as-path prepend 200 200 200
R4(config)#router bgp 200 R4(config-router)#neighbor 10.2.2.2 route-map PREPEND out
- D. R3(config)#route-map PREPEND permit 10 R3(config-route-map)#set as-path prepend 100 100 100
R3(config)#router bgp 200 R3(config-router)#neighbor 10.1.1.1 route-map PREPEND in

Correct Answer: A

R3 advertises BGP updates to R1 with multiple AS 100 so R3 believes the path to reach AS 200 via R3 is farther than R2 so R3 will choose R2 to forward traffic to AS 200.

QUESTION 10

```
count = 8
while count > 4 :
    print(count)
    count -= 1
```

Refer to the exhibit. What is output by this code?

- A. -1 -2 -3 -4
- B. 8 7 6 5
- C. 4 5 6 7
- D. -4 -5 -6 -7

Correct Answer: B

QUESTION 11

What does a northbound API accomplish?

- A. programmatic control of abstracted network resources through a centralized controller
- B. access to controlled network resources from a centralized node
- C. communication between SDN controllers and physical switches
- D. controlled access to switches from automated security applications

Correct Answer: A

QUESTION 12

An engineer uses the Design workflow to create a new network infrastructure in Cisco DNA Center. How is the physical network device hierarchy structured?

- A. by location
- B. by role
- C. by organization
- D. by hostname naming convention

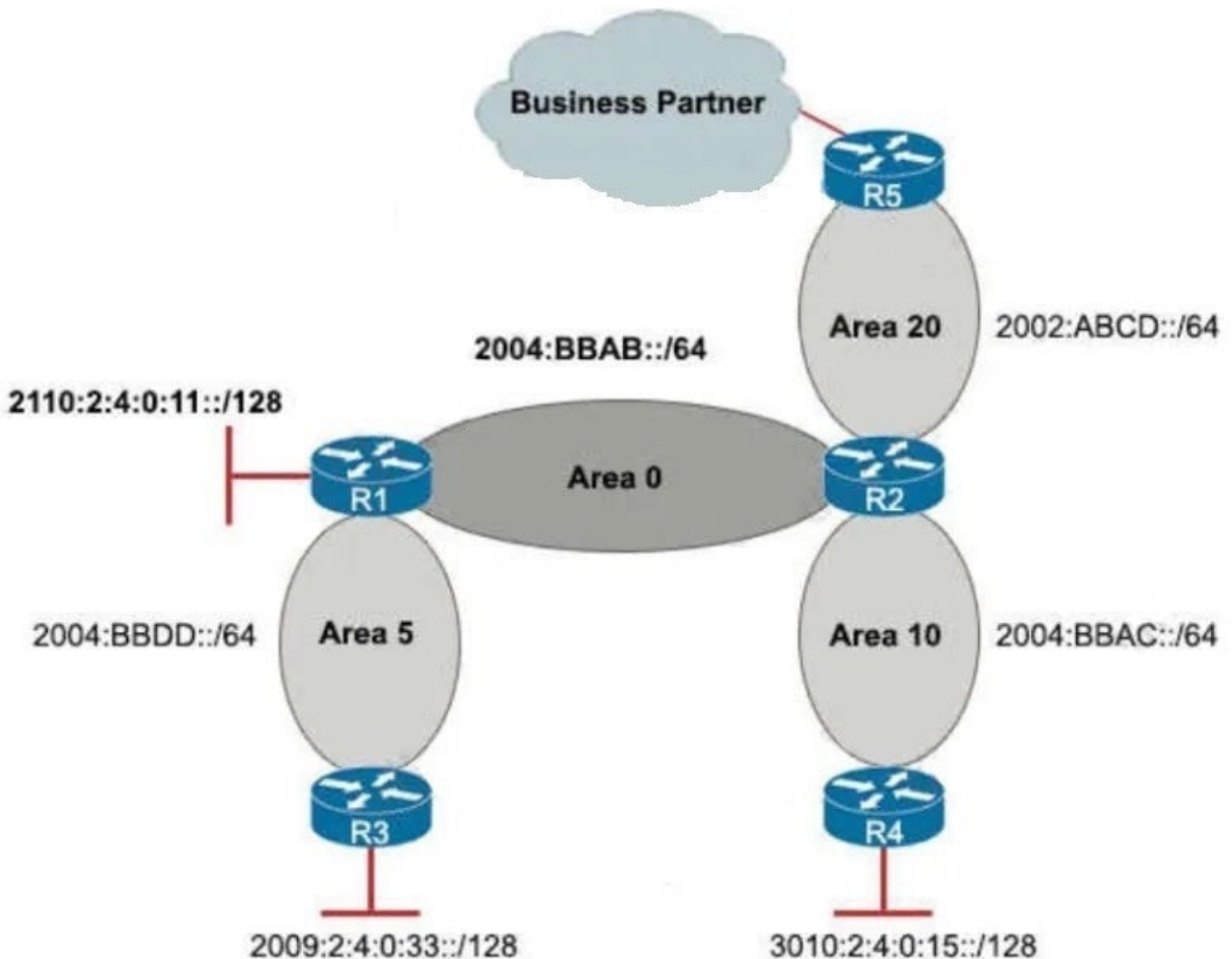
Correct Answer: A

This is because the Design workflow in Cisco DNA Center allows the engineer to create a new network infrastructure by defining the physical network device hierarchy based on the location of the devices. The location hierarchy consists of four levels: global, area, building, and floor. The engineer can add, edit, or delete locations and assign devices to them. The location hierarchy helps to organize the network devices and apply policies and settings based on the location. The

source of this answer is the Cisco ENCOR v1.1 course, module 8, lesson 8.6: Implementing Network Design Processes.

QUESTION 13

Refer to the exhibit. A network engineer applied a filter for LSA traffic on OSPFv3 interarea routes on the area 5 ABR to protect advertising the internal routes of area 5 to the business partner network. All other areas should receive the area 5 internal routes. After the respective route filtering configuration is applied on the ABR, area 5 routes are not visible on any of the areas. How must the filter list be applied on the ABR to resolve this issue?



R2#sh ipv6 route ospf

O 2002:ABCD::/64 [110/1] via FastEthernet0/1, directly connected
O 2004:BBAB::/64 [110/1] via FastEthernet0/0, directly connected
O 2004:BBAC::/64 [110/1] via FastEthernet1/0, directly connected
O 3010:2:4:0:15::/128 [110/1] via FE80::C804:1DFF:FB20:8, FastEthernet0/0

A. in the "out" direction for area 20 on router R2

B. in the "in" direction for area 5 on router R1

C. in the "out" direction for area 5 on router R1

D. in the "in" direction for area 20 on router R2

Correct Answer: A

QUESTION 14

Which two steps are required for a complete Cisco DNA Center upgrade? (Choose two.)

A. golden image selection

B. automation backup

C. proxy configuration

D. application updates

E. system update

Correct Answer: DE

A complete Cisco DNA Center upgrade includes "System Update" and "Appplication Updates"

Reference:

https://www.cisco.com/c/en/us/td/docs/cloud-systems-management/network-automation-and-management/dna-center/upgrade/b_cisco_dna_center_upgrade_guide/m_upgrade_to_cisco_dna_center_2_2_2_x.html

QUESTION 15

Witch two actions provide controlled Layer 2 network connectivity between virtual machines running on the same hypervisor? (Choose two.)

A. Use a single trunk link to an external Layer2 switch.

B. Use a virtual switch provided by the hypervisor.

C. Use a virtual switch running as a separate virtual machine.

D. Use a single routed link to an external router on stick.

E. Use VXLAN fabric after installing VXLAN tunneling drivers on the virtual machines.

Correct Answer: BC

Source 1:

https://www.cisco.com/c/dam/en/us/products/collateral/switches/nexus-1000v-switchvmware-vsphere/at_a_glance_c45-532467.pdf

Source 2:

https://www.cisco.com/c/en/us/td/docs/unified_computing/ucs/sw/vm_fex/vmware/gui/config_guide/2-1/b_GUI_VMware_VMFEX_UCSM_Configuration_Guide_2_1/

b_GUI_VMware_VMFEX_UCSM_Configuration_Guide_2_1_chapter_0110.pdf

[Latest 350-401 Dumps](#)

[350-401 Exam Questions](#)

[350-401 Braindumps](#)