

300-209^{Q&As}

Implementing Cisco Secure Mobility Solutions

Pass Cisco 300-209 Exam with 100% Guarantee

Free Download Real Questions & Answers **PDF** and **VCE** file from:

<https://www.certbus.com/300-209.html>

100% Passing Guarantee
100% Money Back Assurance

Following Questions and Answers are all new published by Cisco
Official Exam Center

-  **Instant Download** After Purchase
-  **100% Money Back** Guarantee
-  **365 Days** Free Update
-  **800,000+** Satisfied Customers



QUESTION 1

Refer to the exhibit. An administrator had the above configuration working with SSL protocol, but as soon as the administrator specified IPsec as the primary protocol, the Cisco AnyConnect client was not able to connect. What is the problem?

```
<ServerList>
  <HostEntry>
    <HostName>SIMOS_ASA</HostName>
    <HostAddress>simos.cisco.com</HostAddress>
    <UserGroup>simos-group</UserGroup>
    <PrimaryProtocol>IPsec</PrimaryProtocol>
  </HostEntry>
</ServerList>

tunnel-group AC general-attributes
 address-pool VPN-POOL
 default-group-policy GroupPolicy_AC
tunnel-group AC webvpn-attributes
 group-alias simos-group enable
 group-url https://simos.cisco.com/simos-group enable
```

- A. IPsec will not work in conjunction with a group URL.
- B. The Cisco AnyConnect implementation does not allow the two group URLs to be the same. SSL does allow this.
- C. If you specify the primary protocol as IPsec, the User Group must be the exact name of the connection profile (tunnel group).
- D. A new XML profile should be created instead of modifying the existing profile, so that the clients force the update.

Correct Answer: C

QUESTION 2

An engineer is configuring clientless VPN. The finance department has a database server that only they should access but the sales department can currently access it. The finance and the sales department are configured as separate group-policies. Which option must be added to the configuration to make sure the users in the sales department cannot access the finance department server?

- A. tunnel group lock
- B. port forwarding
- C. VPN filter ACL
- D. webtype ACL

Correct Answer: D

QUESTION 3

Dynamic access policies can support several posture assessment methods to collect endpoint security attributes. From which operating system does an endpoint collect information?

- A. CISCO NAC
- B. Advanced Endpoint Assessment
- C. Host Scan
- D. CISCO Secure Desktop

Correct Answer: A

QUESTION 4

Which two technologies are considered to be Suite B cryptography? (Choose two.)

- A. MD5
- B. SHA2
- C. Elliptical Curve Diffie-Hellman
- D. 3DES
- E. DES

Correct Answer: BC

QUESTION 5

Which two parameters are configured within an IKEv2 proposal on an IOS router? (Choose two.)

- A. authentication
- B. encryption
- C. integrity
- D. lifetime

Correct Answer: BC

QUESTION 6

Which of these is true regarding tunnel configuration when deploying a Cisco ISR as a DMVPN hub router?

- A. Only one tunnel can be created per tunnel source interface.
- B. Only one tunnel can be created and should be associated with a loopback interface for dynamic redundancy
- C. The GRE tunnel key is used to encrypt the traffic going through the tunnel through the hub.
- D. You can run multiple parallel DMVPNs on the hub router, but each tunnel requires a unique tunnel key.

Correct Answer: D

QUESTION 7

Which statement about CRL configuration is correct?

- A. CRL checking is enabled by default.
- B. The Cisco ASA relies on HTTPS access to procure the CRL list.
- C. The Cisco ASA relies on LDAP access to procure the CRL list.
- D. The Cisco Secure ACS can be configured as the CRL server.

Correct Answer: C

ASA SSLVPN deployment guide:

The security appliance supports various authentication methods: RSA one-time passwords, Radius,

Kerberos, LDAP, NT Domain, TACACS, Local/Internal, digital certificates, and a combination of both authentication and certificates.

QUESTION 8

Which Cisco ASA configuration is used to configure the TCP intercept feature?

- A. a TCP map
- B. an access list
- C. the established command
- D. the set connection command with the embryonic-conn-max option
- E. a type inspect policy map

Correct Answer: D

QUESTION 9

Which feature is available in IKEv1 but not IKEv2?

- A. Layer 3 roaming
- B. aggressive mode
- C. EAP variants
- D. sequencing

Correct Answer: B

QUESTION 10

An engineer is assisting in the continued implementation of a VPN solution and discovers an NHRP server configuration. Which type of VPN solution has been implemented?

- A. DM VPN
- B. IPsec VPN
- C. SSL VPN
- D. GET VPN

Correct Answer: A

QUESTION 11

Which option describes what address preservation with IPsec Tunnel Mode allows when GETVPN is used?

- A. stronger encryption methods
- B. Network Address Translation of encrypted traffic
- C. traffic management based on original source and destination addresses
- D. Tunnel Endpoint Discovery

Correct Answer: C

QUESTION 12

Which two options are purposes of the key server in Cisco IOS GETVPN? (Choose two.)

- A. to define group members.
- B. to distribute static routing information.
- C. to distribute dynamic routing information.

D. to encrypt transit traffic.

Correct Answer: AD

QUESTION 13

A temporary worker must use clientless SSL VPN with an SSH plug-in, in order to access the console of an internal corporate server, the projects.xyz.com server. For security reasons, the network security auditor insists that the temporary

user is restricted to the one internal corporate server, 10.0.4.18.

You are the network engineer who is responsible for the network access of the temporary user.

What should you do to restrict SSH access to the one projects.xyz.com server?

- A. Configure access-list temp_user_acl extended permit TCP any host 10.0.4.18 eq 22.
- B. Configure access-list temp_user_acl standard permit host 10.0.4.18 eq 22.
- C. Configure access-list temp_acl webtype permit url ssh://10.0.4.18.
- D. Configure a plug-in SSH bookmark for host 10.0.4.18, and disable network browsing on the clientless SSL VPN portal of the temporary worker.

Correct Answer: C

QUESTION 14

Which feature is enabled by the use of NHRP in a DMVPN network?

- A. host routing with Reverse Route Injection
- B. BGP multiaccess
- C. host to NBMA resolution
- D. EIGRP redistribution

Correct Answer: C

QUESTION 15

Which Cisco firewall platform supports Cisco NGE?

- A. FWSM
- B. Cisco ASA 5505
- C. Cisco ASA 5580

D. Cisco ASA 5525-X

Correct Answer: D

QUESTION 16

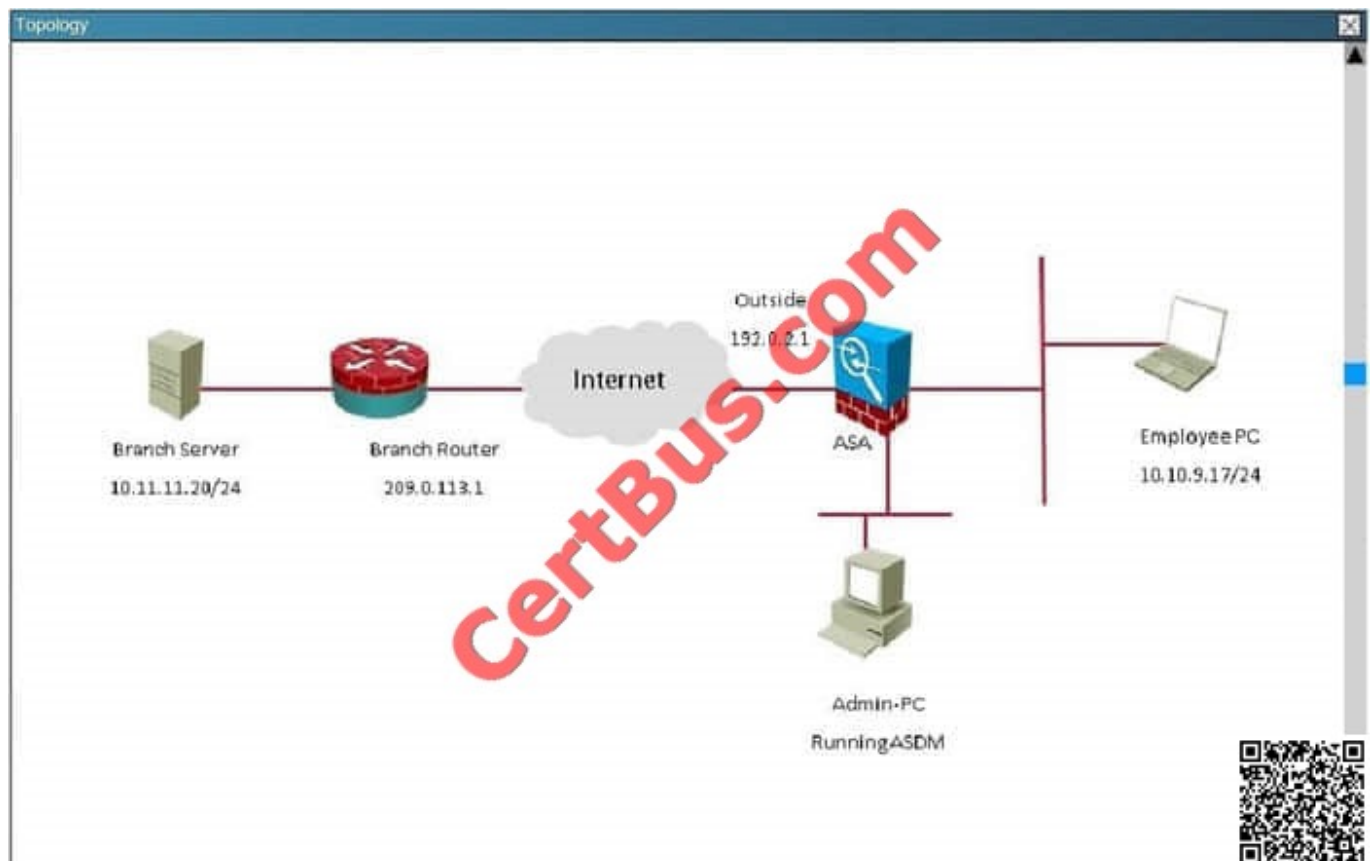
Scenario:

You are the senior network security administrator for your organization. Recently and junior engineer configured a site-to-site IPsec VPN connection between your headquarters Cisco ASA and a remote branch office. You are now tasked with

verifying the IKEv1 IPsec installation to ensure it was properly configured according to designated parameters. Using the CLI on both the Cisco ASA and branch ISR. verify the IPsec configuration is properly configured between the two sites.

NOTE: the show running-config command cannot be used for the this exercise.

Topology:



Which crypto map tag is being used on the Cisco ASA?

- A. outside_cryptomap
- B. VPN-to-ASA
- C. L2L_Tunnel

D. outside_map1

Correct Answer: D

This is seen from the "show crypto ipsec sa" command on the ASA.

```
ASA
ASA#sho crypto ipsec sa
interface: outside
  Crypto map tag: outside_map1, seq num: 1, local addr: 192.0.2.1

  access-list outside_cryptomap extended permit ip 10.10.9.0 255.255.255.0
0.11.11.0 255.255.255.0
  local ident (addr/mask/prot/port): (10.10.9.0/255.255.255.0/0/0)
  remote ident (addr/mask/prot/port): (10.11.11.0/255.255.255.0/0/0)
  current_peer: 203.0.113.1

  #pkts encaps: 15, #pkts encrypt: 15, #pkts digest: 15
  #pkts decaps: 16, #pkts decrypt: 16, #pkts verify: 16
  #pkts compressed: 0, #pkts decompressed: 0
  #pkts not compressed: 15, #pkts comp failed: 0, #pkts decomp failed: 0
  #pre-frag successes: 0, #pre-frag failures: 0, #fragments created: 0
  #PMTUs sent: 0, #PMTUs rcvd: 0, #decapsulated frgs needing reassembly: 0
  #TFC rcvd: 0, #TFC sent: 0
  #Valid ICMP Errors rcvd: 0, #Invalid ICMP Errors rcvd: 0
  #send errors: 0, #recv errors: 0

  local crypto endpt.: 192.0.2.1/0, remote crypto endpt.: 203.0.113.1/0
  path mtu 1500, ipsec overhead 58 (36), media mtu 1500
  PMTU time remaining (sec): 0, DF policy: copy-df
  ICMP error validation: disabled, TFC packets: disabled
```

QUESTION 17

What are two forms of SSL VPN? (Choose two.)

- A. port forwarding
- B. Full Tunnel Mode
- C. Cisco IOS WebVPN
- D. Cisco AnyConnect

Correct Answer: AB

QUESTION 18

Which technology can you implement to reduce latency issues associated with a Cisco AnyConnect VPN?

- A. DTLS


- B. SCTP
- C. DCCP
- D. SRTP

Correct Answer: A

QUESTION 19

Refer to the exhibit. Which exchange does this debug output represent?

```
Apr  2 12:03:55.391: ISAKMP (14): beginning Main Mode exchange
Apr  2 12:03:57.199: ISAKMP (14): processing SA payload. message ID = 0
Apr  2 12:03:57.203: ISAKMP (14): Checking ISAKMP transform 1 against priority 1 policy
Apr  2 12:03:57.203: ISAKMP:      encryption DES-CBC
Apr  2 12:03:57.207: ISAKMP:      hash MD5
Apr  2 12:03:57.207: ISAKMP:      default group 1
Apr  2 12:03:57.207: ISAKMP:      auth pre-share
Apr  2 12:03:57.211: ISAKMP (14): attrs are acceptable. Next payload is 0
Apr  2 12:03:57.215: Crypto engine 0: generate alg param
```



- A. IKE Phase 1
- B. IKE Phase 2
- C. symmetric key exchange
- D. certificate exchange

Correct Answer: A

QUESTION 20

Which algorithm is replaced by elliptic curve cryptography in Cisco NGE?

- A. 3DES
- B. AES
- C. DES
- D. RSA

Correct Answer: D

QUESTION 21

Which VPN solution is best for a collection of branch offices connected by MPLS that frequently make VoIP calls between branches?

- A. GETVPN
- B. Cisco AnyConnect
- C. site-to-site
- D. DMVPN

Correct Answer: A

QUESTION 22

Which header is used when a data plane IPsec packet is created?

- A. IKEv1
- B. AES
- C. SHA
- D. ESP

Correct Answer: D

QUESTION 23

What encryption algorithm does Cisco recommend that you avoid?

- A. HMAC-SHA1
- B. HMAC-MD5
- C. AES-CBS
- D. DES

Correct Answer: D

QUESTION 24

Which cryptographic algorithms are approved to protect Top Secret information?

- A. HIPPA DES
- B. AES-128
- C. RC4-128

D. AES-256

Correct Answer: D

QUESTION 25

Which purpose of configuring perfect Forward secret is true?

A. For every negotiation of a new phase 1 SA, the two gateways generate a new set of phase 2 keys.

B. For every negotiation of a new phase 2 SA, the two gateways generate a new set of phase 1 keys.

C. For every negotiation of a new phase 1 SA, the two gateways generate a new set of phase 1 keys.

D. For every negotiation of a new phase 2 SA, the two gateways generate a new set of phase 2 keys.

Correct Answer: B

QUESTION 26

Refer to exhibit. An engineer must implement DMVPN phase2 and was provided with this configuration by the senior engineer as a template. Which two conclusions can be made from the configuration? (choose two)

```
interface Tunnel10 ip address 172.16.1.1 255.255.255.0 no ip redirects ip mtu 1440 ip nhrp authentication cisco ip nhrp
map multicast dynamic ip nhrp network-id 150 no ip split-horizon eigrp 100 no ip next-hop-self eigrp 100 tunnel source
GigabitEthernet0/0 tunnel mode gre multipoint tunnel key 0 tunnel protection ipsec profile cisco
```

A. EIGRP is used as the dynamic routing protocol

B. spoke-to-spoke communication is allowed

C. EIGRP route redistribution is not allowed

D. EIGRP neighbor adjacency will fail

E. next-hop-self is required

Correct Answer: AB

QUESTION 27

Which protocol must be enabled on the inside interface to use cluster encryption in SSL VPN load balancing?

A. TLS

B. DTLS

C. IKEv2

D. ISAKMP

Correct Answer: D

QUESTION 28

In the Diffie-Hellman protocol, which type of key is the shared secret?

- A. a symmetric key
- B. an asymmetric key
- C. a decryption key
- D. an encryption key

Correct Answer: A

QUESTION 29

Which two changes must be made to migrate from DMVPN Phase 2 to Phase 3 when EIGRP is configured? (Choose two)

- A. Disable EIGRP next-hop-self on the hub.
- B. Enable EIGRP next-hop-self on the hub.
- C. Add NHRP shortcuts on the hub.
- D. Add NHRP redirects on the hub.
- E. Add NHRP redirects on the spoke.

Correct Answer: AD

QUESTION 30

Refer to the exhibit. What is the problem with the IKEv2 site-to-site VPN tunnel?

```
*Dec 5 20:49:53.785: IKEv2:(SA ID = 1070):Failed to verify the proposed policies
*Dec 5 20:49:53.785: IKEv2:(SA ID = 1070):There was no IPSEC policy found for received TS

*Dec 5 20:49:53.785: IKEv2:(SA ID = 1070):
*Dec 5 20:49:53.785: IKEv2:(SA ID = 1070):SM Trace-> SA:
I_SPI=527FCACA776C4724 R_SPI=EFBD7D296CCB08CA (R) MsgID = 00000001 CurSta***
R_VERIFY_AUTH Event: EV_TS_UNACCEPT
*Dec 5 20:49:53.785: IKEv2:(SA ID = 1070):Sending TS unacceptable notify
```



- A. incorrect PSK
- B. crypto access list mismatch
- C. incorrect tunnel group
- D. crypto policy mismatch
- E. incorrect certificate

Correct Answer: B

QUESTION 31

When troubleshooting established clientless SSL VPN issues, which three steps should be taken? (Choose three.)

- A. Clear the browser history.
- B. Clear the browser and Java cache.
- C. Collect the information from the computer event log.
- D. Enable and use HTML capture tools.
- E. Gather crypto debugs on the adaptive security appliance.
- F. Use Wireshark to capture network traffic.

Correct Answer: BDF

<http://www.cisco.com/c/en/us/support/docs/security/asa-5500-x-series-next-generation-firewalls/104298-ssl-clientless-trouble.html>

QUESTION 32

Refer to the exhibit. A NOC engineer is in the process of entering information into the Create New VPN Connection Entry fields.



Which statement correctly describes how to do this?

- A. In the Connection Entry field, enter the name of the connection profile as it is specified on the Cisco ASA appliance.
- B. In the Host field, enter the IP address of the remote client device.
- C. In the Authentication tab, click the Group Authentication or Mutual Group Authentication radio button to enable symmetrical pre-shared key authentication.
- D. In the Name field, enter the name of the connection profile as it is specified on the Cisco ASA appliance.

Correct Answer: D

QUESTION 33

Which configuration is used to build a tunnel between a Cisco ASA and ISR?

- A. crypto map
- B. DMVPN
- C. GET VPN
- D. GRE with IPsec
- E. GRE without IPsec

Correct Answer: A

QUESTION 34

Which command can be used to troubleshoot an IPv6 FlexVPN spoke-to-hub connectivity failure?

- A. show crypto ikev2 client flexvpn
- B. show crypto identity
- C. show crypto isakmp sa
- D. show crypto gkm

Correct Answer: A

QUESTION 35

Which header is used when a data plane IPsec packet is created?

- A. IKEv1
- B. AES
- C. SHA
- D. ESP

Correct Answer: D

QUESTION 36

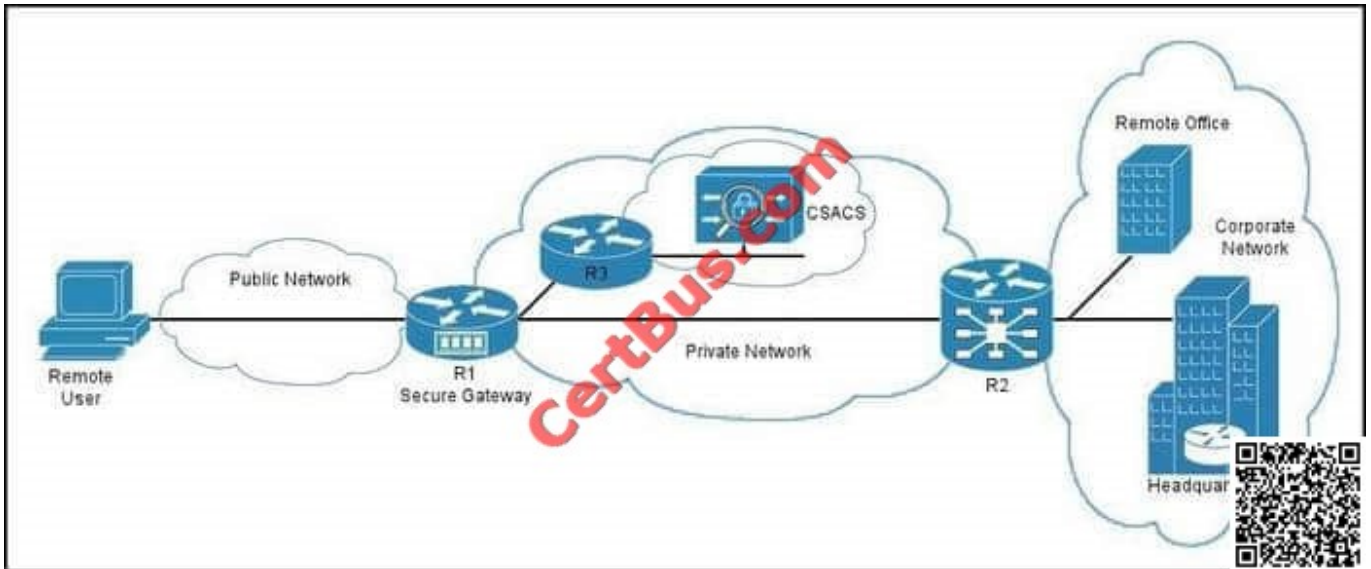
A company has a Flex VPN solution for remote access and one of their Cisco any Connect remote clients is having trouble connecting properly. Which command verifies that packets are being encrypted and decrypted?

- A. show crypto session active
- B. show crypto ikev2 stats
- C. show crypto ikev1 sa
- D. show crypto ikev2 sa
- E. show crypto session detail

Correct Answer: E

QUESTION 37

Refer to the exhibit. You have implemented an SSL VPN as shown. Which type of communication takes place between the secure gateway R1 and the Cisco Secure ACS?



- A. HTTP proxy
- B. AAA
- C. policy
- D. port forwarding

Correct Answer: B

QUESTION 38

Refer to the exhibit. A junior network engineer configured the corporate Cisco ASA appliance to accommodate a new temporary worker. For security reasons, the IT department wants to restrict the internal network access of the new temporary worker to the corporate server, with an IP address of 10.0.4.10. After the junior network engineer finished the configuration, an IT security specialist tested the account of the temporary worker. The tester was able to access the URLs of additional secure servers from the WebVPN user account of the temporary worker.

What did the junior network engineer configure incorrectly?


```
access-list temp_acl webtype permit url http://10.0.4.10
webvpn
enable outside
svc enable
tunnel-group-list enable
group-policy temp_worker internal
group-policy temp_worker attributes
banner value Welcome Temp Workers!
vpn-tunnel-protocol webvpn
vlan 100
webvpn
url-list value Corporate_Server
url-entry disable
group-policy Default attributes
vpn-tunnel-protocol IPSec svc webvpn
webvpn
url-list value Corporate_Server
filter value temp_acl
username temp1 password cisco

username temp1 attributes
vpn-group-policy temp_worker
vpn-tunnel-protocol webvpn
group-lock value temp_worker
service type remote-access
webvpn
file-browsing disable
file-entry enable
url-entry disable
hidden-shares none
url-list value Corporate_Server
customization value temp_worker
tunnel-group temp_worker type remote-access
tunnel-group temp_worker general-attributes
default-group-policy temp_worker
tunnel-group temp_worker webvpn-attributes
customization temp_worker
group-alias temp_worker enable
group-url https://192.168.4.2/temp_work
```



- A. The ACL was configured incorrectly.
- B. The ACL was applied incorrectly or was not applied.
- C. Network browsing was not restricted on the temporary worker group policy.
- D. Network browsing was not restricted on the temporary worker user policy.

Correct Answer: B

QUESTION 39

Refer to the exhibit. Which two characteristics of the VPN implementation are evident? (Choose two.)

```
interface Tunnel12
 ip address 172.16.16.5 255.255.255.0
 no ip redirects
 ip mtu 1400
 ip nhrp authentication cisco
 ip nhrp map multicast 10.10.10.1
 ip nhrp map multicast 20.20.20.1
 ip nhrp map 172.16.16.1 10.10.10.1
 ip nhrp map 172.16.16.3 20.20.20.1
 ip nhrp network-id 12
 ip nhrp nhs 172.16.16.1
 ip nhrp nhs 172.16.16.3
 ip nhrp shortcut
 ip tcp adjust-mss 1360
 ip ospf network point-to-multipoint
 ip ospf dead-interval 9
 ip ospf hello-interval 3
 ip ospf cost 1100
 load-interval 30
 tunnel source Serial1/0
 tunnel mode gre multipoint
 tunnel key 12
 tunnel protection ipsec profile TUNNEL-12
end
```



- A. dual DMVPN cloud setup with dual hub
- B. DMVPN Phase 3 implementation
- C. single DMVPN cloud setup with dual hub
- D. DMVPN Phase 1 implementation
- E. quad DMVPN cloud with quadra hub
- F. DMVPN Phase 2 implementation

Correct Answer: BC

QUESTION 40

Which protocols does the Cisco AnyConnect client use to build multiple connections to the security appliance?

- A. TLS and DTLS
- B. IKEv1
- C. L2TP over IPsec
- D. SSH over TCP

Correct Answer: A

[300-209 PDF Dumps](#)

[300-209 Study Guide](#)

[300-209 Exam Questions](#)

To Read the [Whole Q&As](#), please purchase the [Complete Version](#) from [Our website](#).

Try our product !

100% Guaranteed Success

100% Money Back Guarantee

365 Days Free Update

Instant Download After Purchase

24x7 Customer Support

Average 99.9% Success Rate

More than 800,000 Satisfied Customers Worldwide

Multi-Platform capabilities - [Windows](#), [Mac](#), [Android](#), [iPhone](#), [iPod](#), [iPad](#), [Kindle](#)

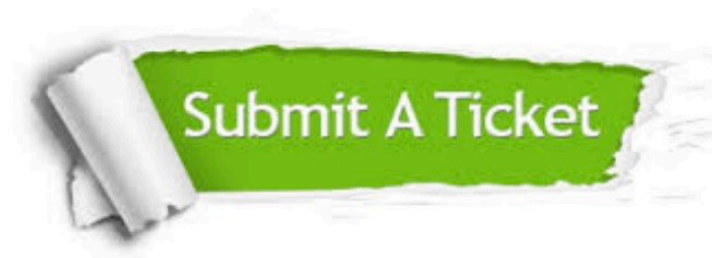
We provide exam PDF and VCE of Cisco, Microsoft, IBM, CompTIA, Oracle and other IT Certifications. You can view Vendor list of All Certification Exams offered:

<https://www.certbus.com/allproducts>

Need Help

Please provide as much detail as possible so we can best assist you.

To update a previously submitted ticket:



 <p>One Year Free Update Free update is available within One Year after your purchase. After One Year, you will get 50% discounts for updating. And we are proud to boast a 24/7 efficient Customer Support system via Email.</p>	 <p>Money Back Guarantee To ensure that you are spending on quality products, we provide 100% money back guarantee for 30 days from the date of purchase.</p>	 <p>Security & Privacy We respect customer privacy. We use McAfee's security service to provide you with utmost security for your personal information & peace of mind.</p>
---	---	--

Any charges made through this site will appear as Global Simulators Limited.

All trademarks are the property of their respective owners.

Copyright © certbus, All Rights Reserved.