

300-101^{Q&As}

Implementing Cisco IP Routing

Pass Cisco 300-101 Exam with 100% Guarantee

Free Download Real Questions & Answers **PDF** and **VCE** file from:

<https://www.certbus.com/300-101.html>

100% Passing Guarantee
100% Money Back Assurance

Following Questions and Answers are all new published by Cisco
Official Exam Center

-  **Instant Download** After Purchase
-  **100% Money Back** Guarantee
-  **365 Days** Free Update
-  **800,000+** Satisfied Customers



QUESTION 1

Which feature eliminates the need for Cisco Express Forwarding to maintain a route cache ?

- A. Adjacency table
- B. RIB
- C. FIB
- D. MAC address table

Correct Answer: C

QUESTION 2

DRAG DROP

Drag and drop the statements about authentication, authorization and accounting from the left into the correct categories on the right.

Select and Place:

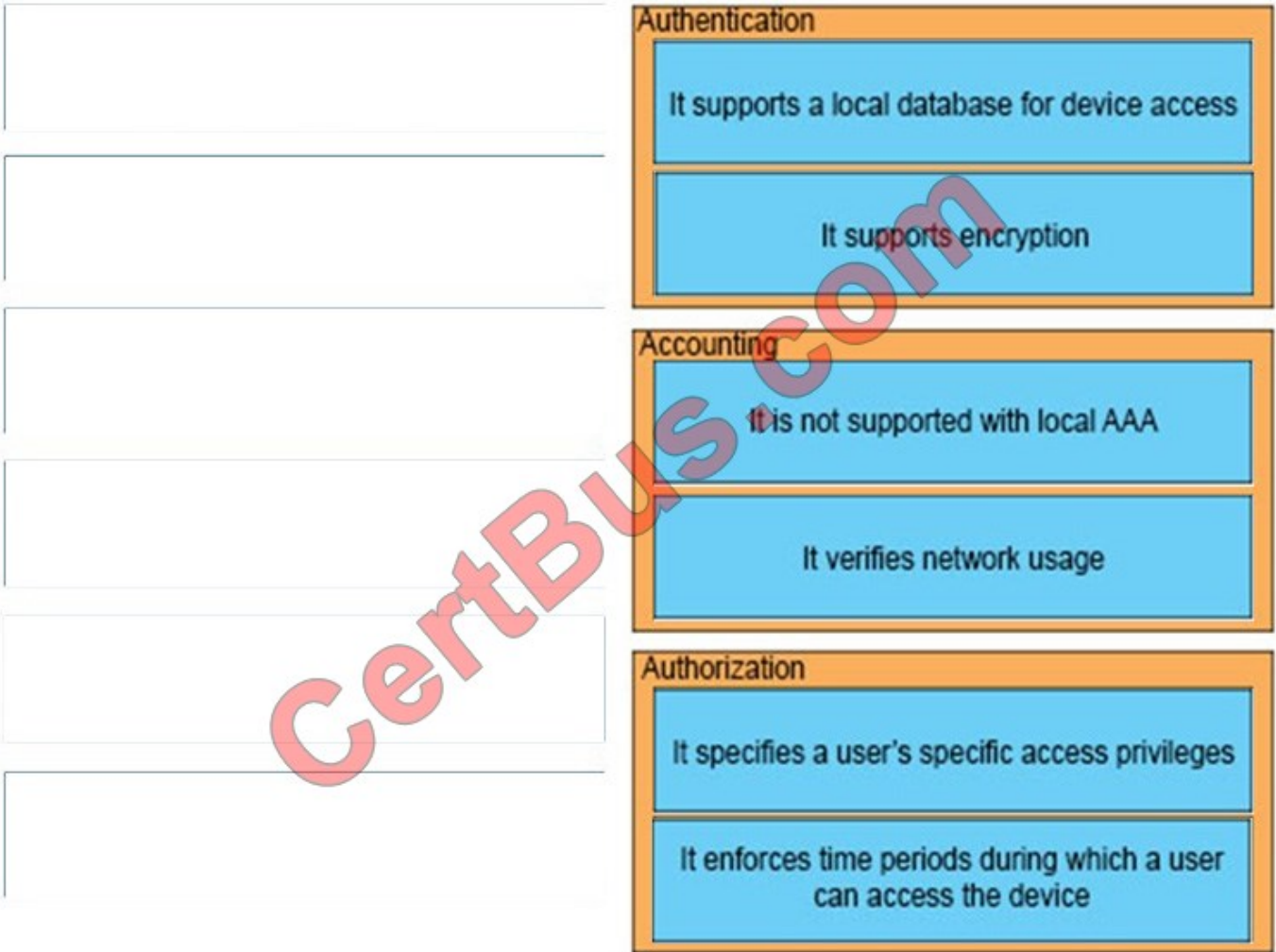
- It enforces time periods during which a user can access the device
- It is not supported with local AAA
- It specifies a user's specific access privileges
- It supports a local database for device access
- It supports encryption
- It verifies network usage

Authentication

Accounting

Authorization

Correct Answer:



AAA offers different solutions that provide access control to network devices. The following services are included within its modular architectural framework:

+

Authentication – The process of validating users based on their identity and predetermined credentials, such as passwords and other mechanisms like digital certificates. Authentication controls access by requiring valid user credentials, which are typically a username and password. With RADIUS, the ASA supports PAP, CHAP, MS-CHAP1, MS-CHAP2, that means Authentication supports encryption.

+

Authorization – The method by which a network device assembles a set of attributes that regulates what tasks the user is authorized to perform. These attributes are measured against a user database. The results are returned to the network device to determine the user's qualifications and restrictions. This database can be located locally on Cisco ASA or it can be hosted on a RADIUS or Terminal Access Controller Access-Control System Plus (TACACS+) server. In summary, Authorization controls access per user after users authenticate.

+

Accounting – The process of gathering and sending user information to an AAA server used to track login times (when the user logged in and logged off) and the services that users access. This information can be used for billing, auditing, and reporting purposes.

QUESTION 3

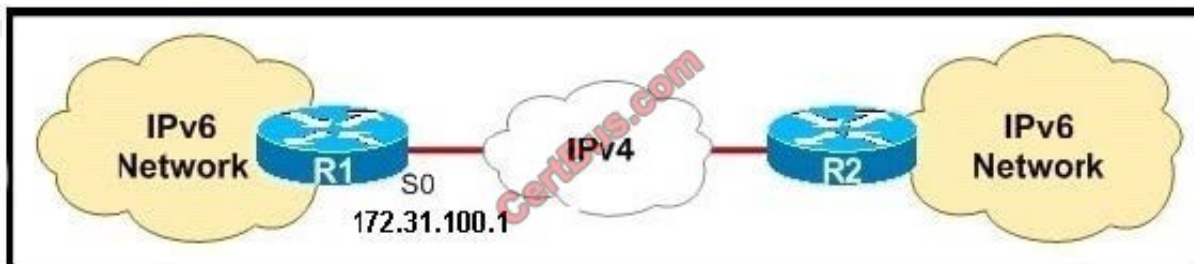
A network engineer recently deployed Easy Virtual Networking in the enterprise network. Which feature improves shared services support?

- A. edge interfacing
- B. tunnel feedback
- C. route replication
- D. route redistribution

Correct Answer: C

QUESTION 4

Refer to the exhibit.



If R1 is configured for 6to4 tunneling, what will the prefix of its IPv6 network be?

- A. 1723:1100:1::/48
- B. FFFF:AC1F:6401::/16
- C. AC1F:6401::/32
- D. 2002:AC1F:6401::/48
- E. 3FFE:AC1F:6401::/32

Correct Answer: D

QUESTION 5

A network engineer initiates the ip sla responder tcp-connect command in order to gather statistics for performance gauging. Which type of statistics does the engineer see?

- A. connectionless-oriented
- B. service-oriented

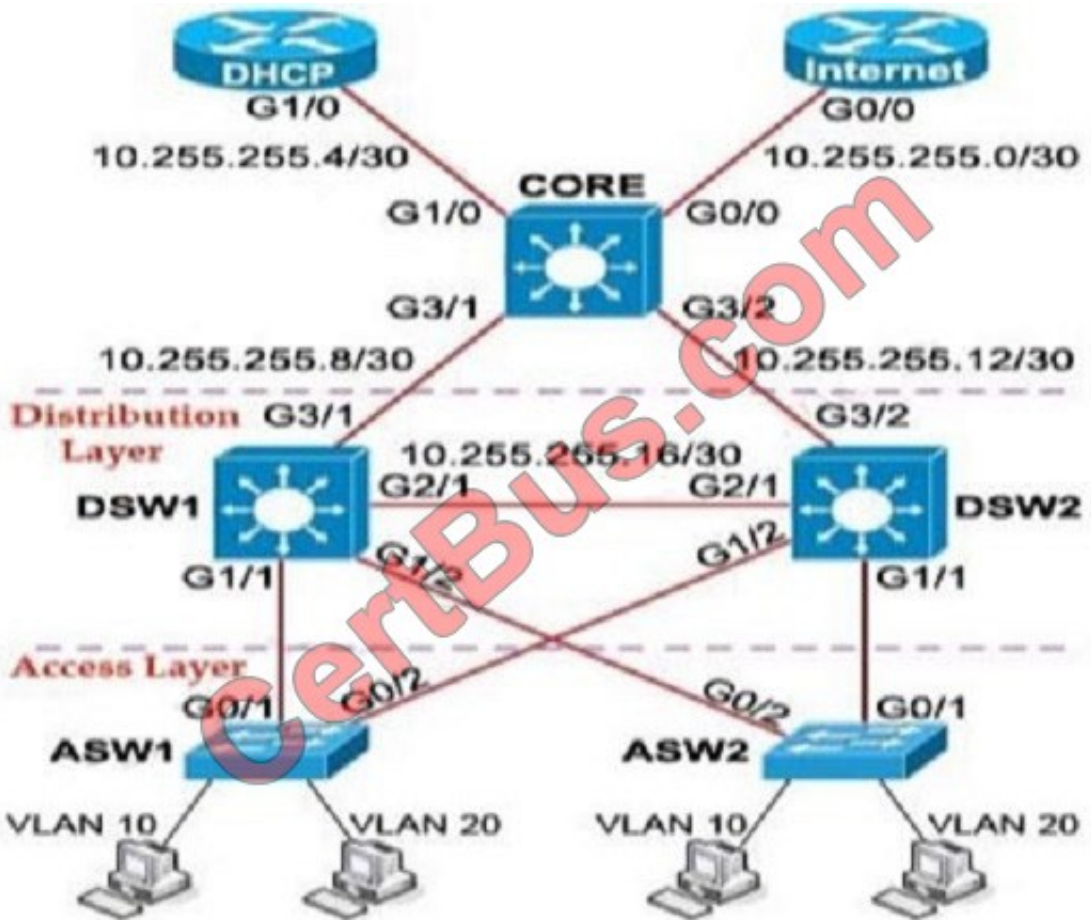
- C. connection-oriented
- D. application-oriented

Correct Answer: C

Configuration Examples for IP SLAs TCP Connect Operations The following example shows how to configure a TCP Connection-oriented operation from Device B to the Telnet port (TCP port 23) of IP Host 1 (IP address 10.0.0.1), as shown in the "TCP Connect Operation" figure in the "Information About the IP SLAs TCP Connect Operation" section. The operation is scheduled to start immediately. In this example, the control protocol is disabled on the source (Device B). IP SLAs uses the control protocol to notify the IP SLAs responder to enable the target port temporarily. This action allows the responder to reply to the TCP Connect operation. In this example, because the target is not a Cisco device and a well-known TCP port is used, there is no need to send the control message. Device A (target device) Configuration configure terminal ip sla responder tcp-connect ipaddress 10.0.0.1 port 23 Reference: http://www.cisco.com/c/en/us/td/docs/ios-xml/ios/ipsla/configuration/15-mt/sla-15-mt-book/sla_tcp_conn.html

QUESTION 6

Refer to the exhibit. Which option prevents routing updates from being sent to the DHCP router, while still allowing routing update messages to flow to the Internet router and the distribution switches?



- A. CORE(config)# access-list ... deny CORE(config)# access-list ... permit CORE(config-router)# distribute-list .. out
- B. CORE(config)# access-list ... deny CORE(config)# access-list ... permit CORE(config-if)# distribute-list .. out

- C. DHCP(config)# access-list ... deny DHCP(config)# access-list ... permit CORE(config-router)# distribute-list .. out
- D. CORE(config)# access-list ... deny CORE(config)# access-list ... permit DHCP(config-if)# distribute-list .. out

Correct Answer: A

QUESTION 7

When the tunnel interface is configured in default mode, which statement about routers and the tunnel destination address is true?

- A. The router must have a route installed towards the tunnel destination
- B. the router must have wccp redirects enabled inbound from the tunnel destination
- C. the router must have cisco discovery protocol enabled on the tunnel to form a CDP neighborhood with the tunnel destination
- D. the router must have redirects enabled outbound towards the tunnel destination

Correct Answer: A

If routing is not carefully configured, the tunnel may have a recursive routing problem. When the best path to the "tunnel destination" is via the tunnel itself, recursive routing causes the tunnel interface to flap. To avoid recursive routing

problems, keep the control-plane routing separate from the tunnel routing using the following methods:

se a different autonomous system number or tag.

se a different routing protocol.

se static routes to override the first hop (but watch for routing loops). When you have recursive routing to the tunnel destination, the following error appears:

```
%TUN-RECURDOWN Interface Tunnel 0
```

```
temporarily disabled due to recursive routing
```

http://www.cisco.com/c/en/us/td/docs/ios/12_4/interface/configuration/guide/inb_tun.html

QUESTION 8

What are three reasons to control routing updates via route filtering? (Choose three).

- A. to hide certain networks from the rest of the organization
- B. for easier implementation
- C. to control network overhead on the wire
- D. for simple security
- E. to prevent adjacencies from forming

Correct Answer: ACD

QUESTION 9

Which option is the minimum privilege level that the allows the user to execute all user-level commands but prohibits enable-level commands by default?

- A. Level 1
- B. Level 0
- C. Level 14
- D. Level 15

Correct Answer: A

QUESTION 10

if you configure one router in you network with auto-cost reference bandwidth 100 command, which effect on the data path is true?

- A. the data path remains the same for all links
- B. the data path changes for 10Mbps links only
- C. the data path changes for all links
- D. the data path changes for 10GBPS links only

Correct Answer: A

QUESTION 11

Which SNMP security level is available across all versions of the protocol?

- A. authPriv
- B. authNoPriv
- C. NoAuthNoPriv
- D. NoAuthNoEgress

Correct Answer: C

QUESTION 12

how route tags can be set (choose two)

- A. only with route-maps
- B. only with taglists
- C. can be set with route-maps
- D. can be set with taglist.
- E. only used on link state RPs.

Correct Answer: CD

[300-101 Practice Test](#)

[300-101 Study Guide](#)

[300-101 Exam Questions](#)

To Read the [Whole Q&As](#), please purchase the [Complete Version](#) from [Our website](#).

Try our product !

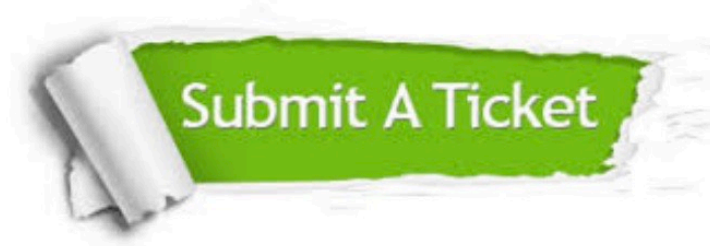
100% Guaranteed Success
100% Money Back Guarantee
365 Days Free Update
Instant Download After Purchase
24x7 Customer Support
Average 99.9% Success Rate
More than 800,000 Satisfied Customers Worldwide
Multi-Platform capabilities - [Windows](#), [Mac](#), [Android](#), [iPhone](#), [iPod](#), [iPad](#), [Kindle](#)

We provide exam PDF and VCE of Cisco, Microsoft, IBM, CompTIA, Oracle and other IT Certifications.
You can view Vendor list of All Certification Exams offered:

<https://www.certbus.com/allproducts>

Need Help

Please provide as much detail as possible so we can best assist you.
To update a previously submitted ticket:



 <p>One Year Free Update Free update is available within One Year after your purchase. After One Year, you will get 50% discounts for updating. And we are proud to boast a 24/7 efficient Customer Support system via Email.</p>	 <p>Money Back Guarantee To ensure that you are spending on quality products, we provide 100% money back guarantee for 30 days from the date of purchase.</p>	 <p>Security & Privacy We respect customer privacy. We use McAfee's security service to provide you with utmost security for your personal information & peace of mind.</p>
---	---	--

Any charges made through this site will appear as Global Simulators Limited.
All trademarks are the property of their respective owners.
Copyright © certbus, All Rights Reserved.