

300-075^{Q&As}

Implementing Cisco IP Telephony and Video

Pass Cisco 300-075 Exam with 100% Guarantee

Free Download Real Questions & Answers **PDF** and **VCE** file from:

<https://www.certbus.com/300-075.html>

100% Passing Guarantee
100% Money Back Assurance

Following Questions and Answers are all new published by Cisco
Official Exam Center

-  **Instant Download** After Purchase
-  **100% Money Back** Guarantee
-  **365 Days** Free Update
-  **800,000+** Satisfied Customers



QUESTION 1

Which statement best describes globalized call routing in Cisco Unified Communications Manager?

- A. All incoming calling numbers on the phones are displayed as an E.164 with the + prefix.
- B. Call routing is based on numbers represented as an E.164 with the + prefix format.
- C. All called numbers sent out to the PSTN are in E.164 with the + prefix format.
- D. The CSS of all phones contain partitions assigned to route patterns that are in global format.
- E. All phone directory numbers are configured as an E.164 with the + prefix.

Correct Answer: B

QUESTION 2

Which parameter prevents the Cisco TelePresence Video Communication Server from responding to endpoint gatekeeper discovery requests?

- A. On the VCS, navigate to Configuration, Registration, Allow List, and set Auto Registration to off.
- B. On the VCS, navigate to Configuration, Protocols, H.323, and set Auto Discover to off.
- C. On the VCS, navigate to Configuration, Registration, Configuration, and set Auto Registration to off.
- D. On the VCS, navigate to Configuration, Protocols, H.323, and set Auto Registration to off.

Correct Answer: B

QUESTION 3

An engineer is performing an international multisite deployment and wants to create an effective backup method to access TEHO destinations in case of call failure through primary route. Which technology provides this ability?

- A. AAR
- B. CFUR
- C. LRG
- D. SRST

Correct Answer: B

QUESTION 4

Refer to the exhibit.

```
voice-card 0
 dspfarm
 dsp services dspfarm

 sccp local FastEthernet0/0
 sccp ccm 10.1.1.1 identifier 1 version 6.0
 sccp

 sccp ccm group 1
  associate ccm 2 priority 1
  associate profile 1 register HQ_XCODER

 dsp farm profile 1 transcode
  codec g711ulaw
  codec g711alaw
  codec g729ar8
  codec g729abr8
  maximum sessions 2
  associate application SCCP
  no shutdown
```

You have configured transcoder resources in both an IOS router and a Cisco Unified Communications Manager. When you review the configurations in both devices the IP addresses and transcoder names are correct, but the transcoder is failing to register with the Cisco Unified Communications Manager.

Which command needs to be edited to allow the transcoder to register properly?

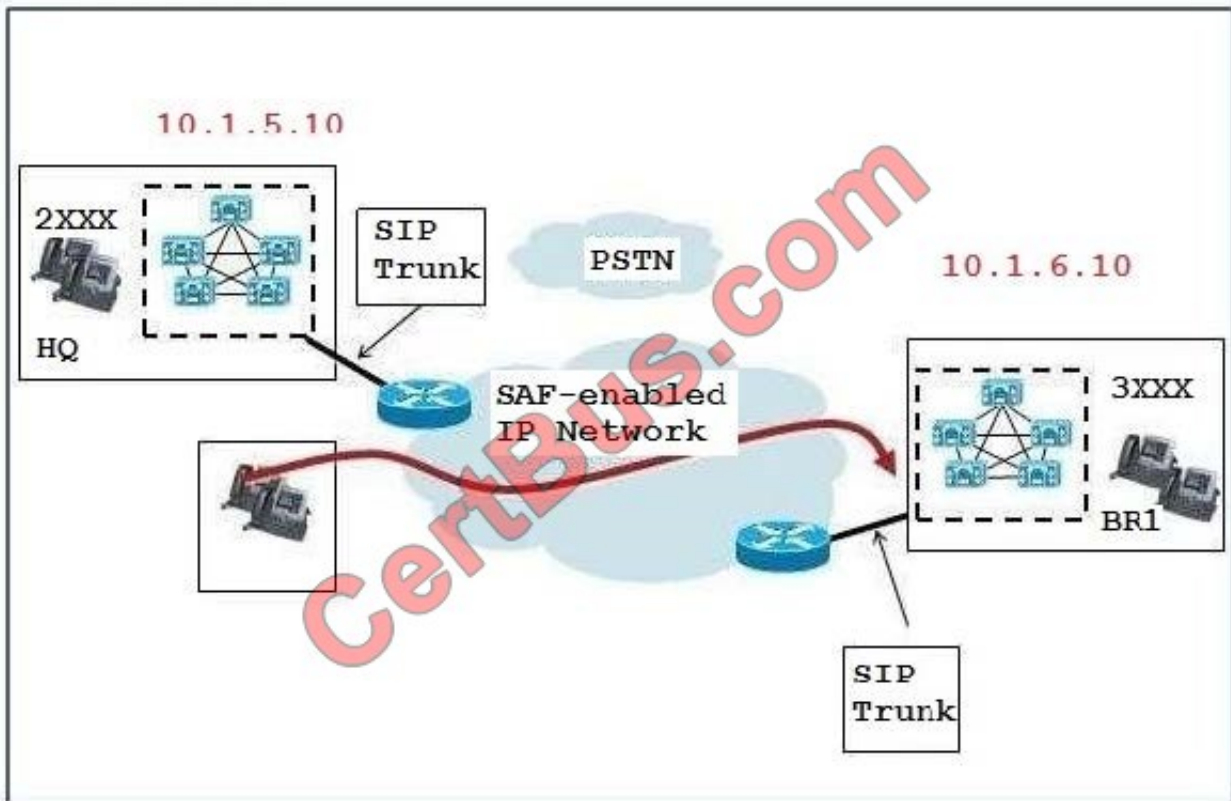
- A. The associate profile and dsp farm profile numbers need to match associate ccm 2 command.
- B. The associate ccm 2 priority 1 command needs to be changed so the ccm value matches identifier 1 in the sccp ccm 10.1.1.1 command.
- C. The sccp ccm group number needs to match the associate ccm 2 command.
- D. The maximum sessions command must match the number of codecs configured under the dsp farm profile.
- E. The sccp ccm group number must match the voice-card number.

Correct Answer: B

The value of the IP address should match the IP address in the ip source-address command.

QUESTION 5

Refer to the exhibit.



What must be configured on the HQ Cisco Unified Communications Manager to allow HQ users to dial the SAF learned directory number pattern 3XXX?

- A. Route pattern 3XXX should be configured and made available to HQ users through the phone CSS.
- B. Route pattern 3XXX should be configured and made available to HQ phone users through the phone AAR CSS.
- C. The SAF partition assigned to the SAF learned patterns must be available to the HQ phone users through the phone CSS.
- D. The SAF partition assigned to the SAF learned patterns must be available to the HQ phone users through the phone AAR CSS.
- E. The SAF directory number pattern 3XXX will be made available to all users automatically as soon as the SAF partition is selected.

Correct Answer: C

By adopting the SAF network service, the call control discovery feature allows Cisco Unified Communications Manager to advertise itself along with other key attributes.

QUESTION 6

Which symbol is required for globalized call routing?

- A. +
- B. *

C. %

D. /

E. ;

Correct Answer: A

QUESTION 7

Which statement about H.323 Gatekeeper Call Admission Control is true?

- A. Gatekeeper Call Admission Control applies to centralized Cisco Unified Communications deployments that use locations based Call Admission Control.
- B. Gatekeeper Call Admission Control applies to distributed Cisco Unified Communications deployments.
- C. Gatekeeper Call Admission Control applies only to distributed Cisco Unified Communications Express deployments.
- D. Gatekeeper Call Admission Control setting is configured in Cisco Unified Communications Manager.

Correct Answer: B

In distributed call processing deployments on a simple hub-and-spoke topology, you can implement call admission control with a Cisco IOS gatekeeper. In this design, the call processing agent (which could be a Unified CM cluster, Cisco Unified Communications Manager Express (Unified CME), or an H.323 gateway) registers with the Cisco IOS gatekeeper and queries it each time the agent wants to place an IP WAN call.

QUESTION 8

Which two configurations provide the best SIP trunk redundancy with Cisco Unified Communications Manager? (Choose two.)

- A. Configure all SIP trunks with DNS SRV
- B. Configure all SIP trunks with Cisco Unified Border Element
- C. Configure all SIP trunks to point to a SIP gateway
- D. Configure SIP trunks to be members of route groups and route lists
- E. Configure all SIP trunks to allow TCP ports 5060
- F. Configure all SIP trunks to point to a gatekeeper through SIP to H.323 gateway

Correct Answer: AD

For SIP trunks, Cisco Unified Communications Manager supports up to 16 IP addresses for each DNS SRV and up to 10 IP addresses for each DNS host name. The order of the IP addresses depends on the DNS response and may be identical in each DNS query. The OPTIONS request may go to a different set of remote destinations each time if a DNS SRV record (configured on the SIP trunk) resolves to more than 16 IP addresses, or if a host name (configured on the SIP trunk) resolves to more than 10 IP addresses. Thus, the status of a SIP trunk may change because of a change in the way a DNS query gets resolved, not because of any change in the status of any of the remote destinations.

QUESTION 9

Which statement describes locations based CAC?

- A. It is a purely logical assignment and does not reflect the actual topology or the actual bandwidth available.
- B. The configured bandwidth limit is dependent on the destination location of the call.
- C. Each device may have more than one location assigned.
- D. Cisco Unified Communications Manager uses an arbitrary bandwidth value for each location.
- E. Locations based CAC is used to determine the codec used between sites.

Correct Answer: A

QUESTION 10

Scenario:

There are two call control systems in this item.

The Cisco UCM is controlling the Cisco Jabber for Windows Client, and the 7965 and 9971 Video IP Phone.

The Cisco VCS is controlling the SX20, the Cisco TelePresence MCU, and the Cisco Jabber TelePresence for Windows.

DP:

DP

Status

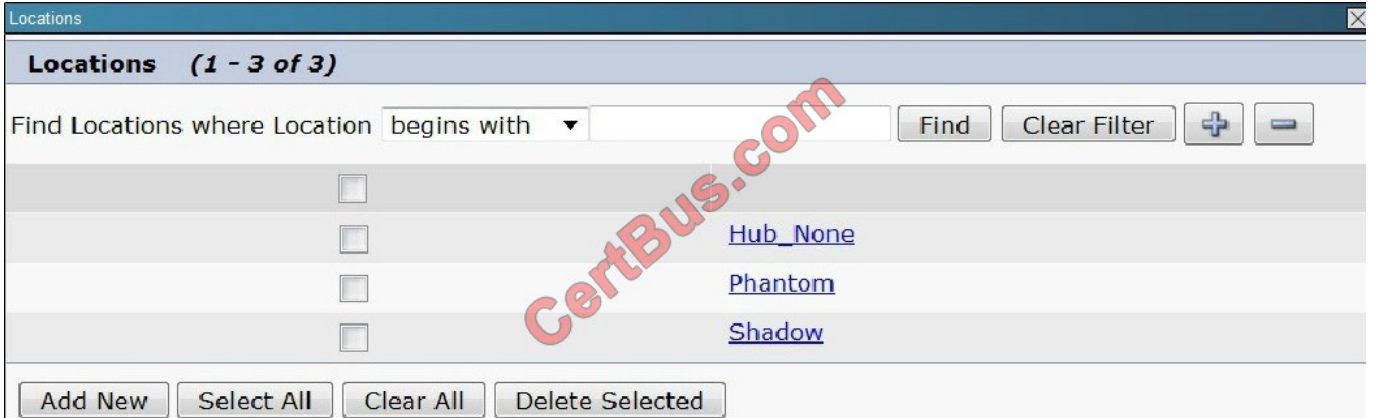
3 records found

Device Pool (1-3 of 3)

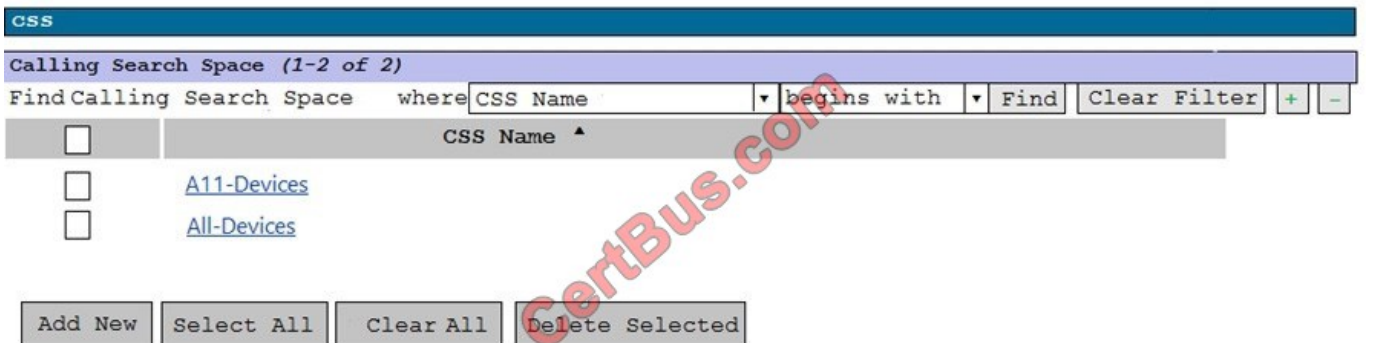
Find Device Pool where begins with Find

<input type="checkbox"/>	Name ^	Cisco Unified CM Group	Region	Date/Time
<input type="checkbox"/>	Default	Default	Default	CMLocal
<input type="checkbox"/>	Default	Default	Default	CMLocal
<input type="checkbox"/>	GSM	Default	GSM	CMLocal

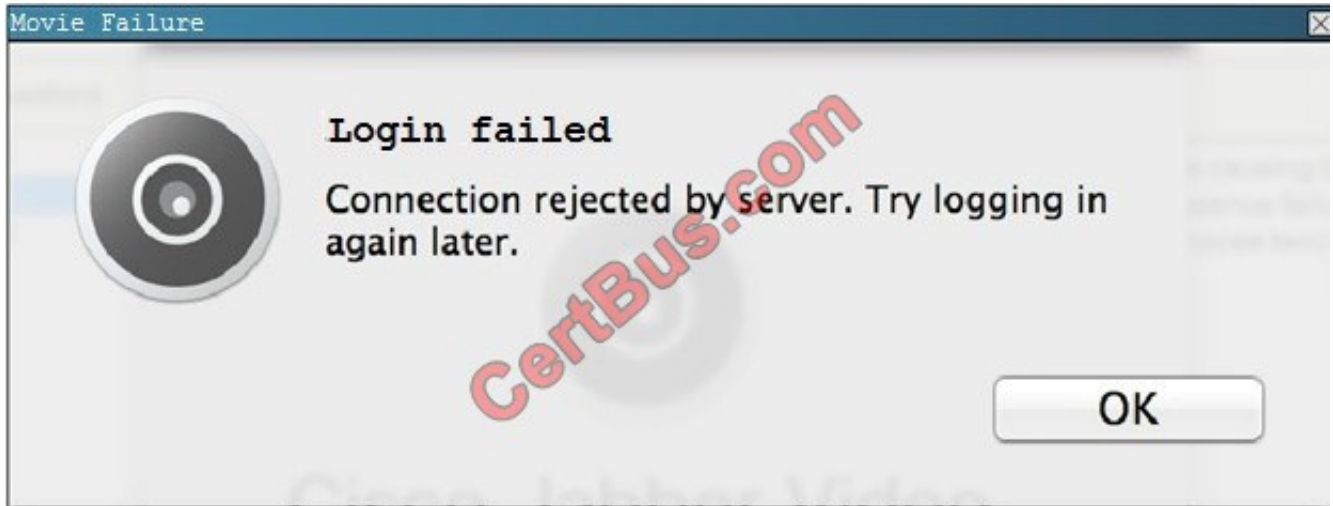
Locations:



CSS:



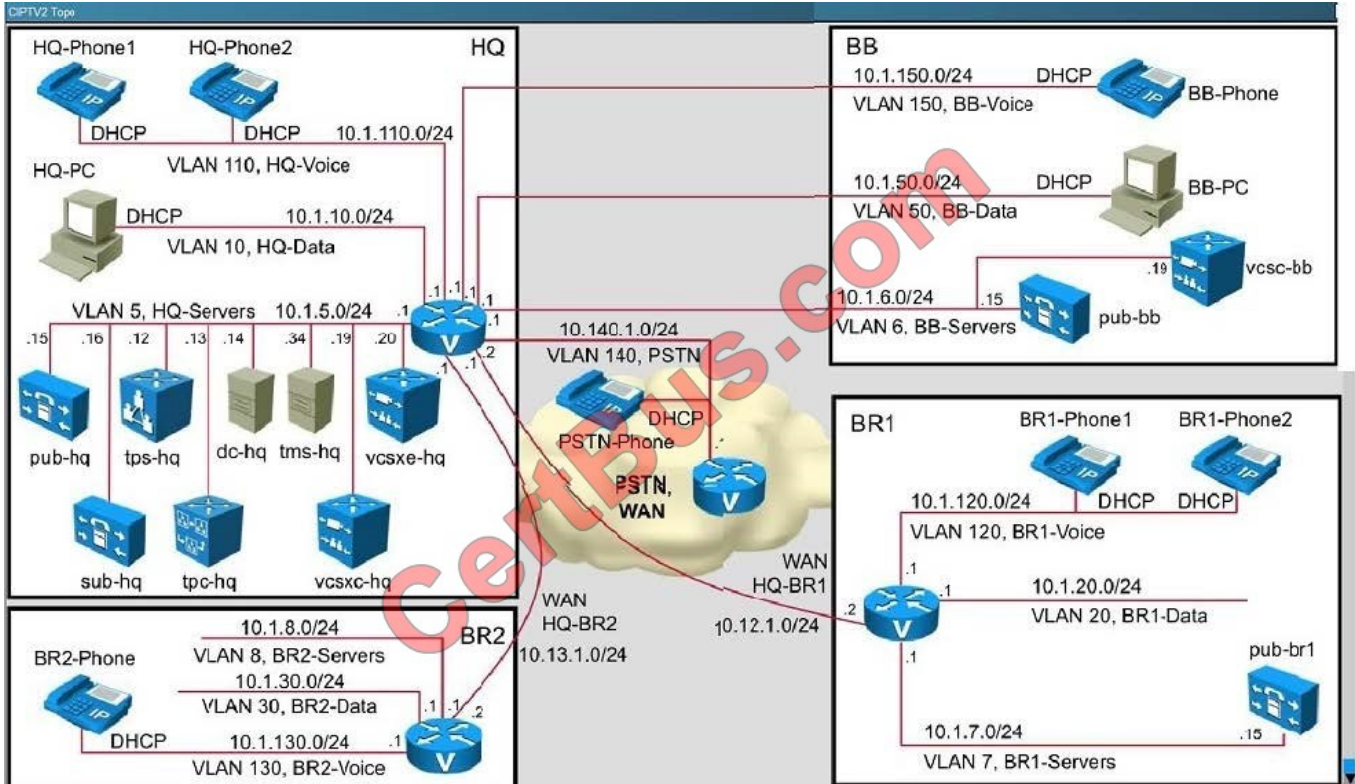
Movie Failure:



Movie Settings:



CIPTV2 Topology:



Subzone:

Subzones

- Name: HQ
- Authentication policy: Treat as authenticated
- Total bandwidth available - Bandwidth restriction: Limited
- Total bandwidth available - Total bandwidth limit (kbps): 512
- Calls into or out of this subzone - Bandwidth restriction: Limited
- Calls into or out of this subzone - Total bandwidth limit (kbps): 0
- Calls entirely within this subzone - Bandwidth restriction: Limited
- Calls entirely within this subzone - Total bandwidth limit (kbps): 200

Links:

Links

Links

You are here: [Configuration](#) > [Bandwidth](#) > [Links](#)

Name	Node 1	Node 2	Pipe 1	Pipe 2	Calls	Bandwidth used	Actions
<input type="checkbox"/> DefaultSZtoClusterSZ	DefaultSubZone	ClusterSubZone			0	0kbps	View/Edit
<input type="checkbox"/> DefaultSZtoDefaultZ	DefaultSubZone	DefaultZone			0	0kbps	View/Edit
<input type="checkbox"/> DefaultSZtoTraversalSZ	DefaultSubZone	TraversalSubZone			0	0kbps	View/Edit
<input type="checkbox"/> SubZone001ToDefaultSZ	HQ	DefaultSubZone			0	0kbps	View/Edit
<input type="checkbox"/> SubZone001ToTraversalSZ	HQ	TraversalSubZone			0	0kbps	View/Edit
<input type="checkbox"/> TraversalSZtoDefaultZ	TraversalSubZone	DefaultZone			0	0kbps	View/Edit
<input type="checkbox"/> VCS HQ - toHQ	HQ	toHQ	to HQ pipe		1	128kbps	View/Edit

Pipe:

Pipe
Name: to_HQ_pipe
Total Bandwidth available – Bandwidth restriction: Limited
Total Bandwidth available – Total bandwidth limit (kbps): 256
Calls through this pipe – Bandwidth restriction: Limited
Calls through this pipe – Per call bandwidth limit (kbps): 128

A third collaboration call fails between the backbone site and the HQ site. After reviewing the exhibits, which of the following reasons could be causing this failure?

- A. Not enough bandwidth has been allocated.
- B. Device Pool.
- C. Location.
- D. The pipe is not functioning.

Correct Answer: A

QUESTION 11

Which three commands are necessary to override the default CoS to DSCP mapping on interface FastEthernet0/1? (Choose three.)

- A. mls qos map cos-dscp 0 10 18 26 34 46 48 56
- B. mls qos map dscp-cos 8 10 to 2
- C. mls qos
- D. interface FastEthernet0/1 mls qos trust cos
- E. interface FastEthernet0/1 mls qos cos 1
- F. interface FastEthernet0/2 mls qos cos 1

Correct Answer: ACD

QUESTION 12

How long is the default keepalive period for SRST in Cisco IOS?

- A. 45 sec

B. 30 sec

C. 60 sec

D. 120 sec

Correct Answer: B

[Latest 300-075 Dumps](#)

[300-075 VCE Dumps](#)

[300-075 Practice Test](#)

To Read the [Whole Q&As](#), please purchase the [Complete Version](#) from [Our website](#).

Try our product !

100% Guaranteed Success

100% Money Back Guarantee

365 Days Free Update

Instant Download After Purchase

24x7 Customer Support

Average 99.9% Success Rate

More than 800,000 Satisfied Customers Worldwide

Multi-Platform capabilities - [Windows](#), [Mac](#), [Android](#), [iPhone](#), [iPod](#), [iPad](#), [Kindle](#)

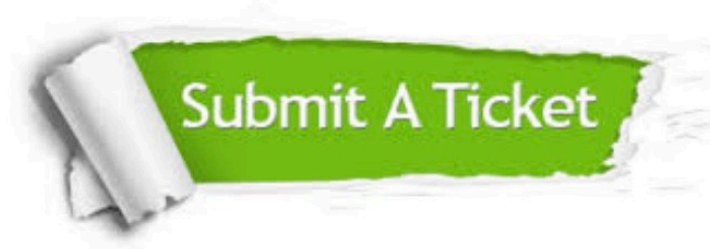
We provide exam PDF and VCE of Cisco, Microsoft, IBM, CompTIA, Oracle and other IT Certifications. You can view Vendor list of All Certification Exams offered:

<https://www.certbus.com/allproducts>

Need Help

Please provide as much detail as possible so we can best assist you.

To update a previously submitted ticket:



 <p>One Year Free Update Free update is available within One Year after your purchase. After One Year, you will get 50% discounts for updating. And we are proud to boast a 24/7 efficient Customer Support system via Email.</p>	 <p>Money Back Guarantee To ensure that you are spending on quality products, we provide 100% money back guarantee for 30 days from the date of purchase.</p>	 <p>Security & Privacy We respect customer privacy. We use McAfee's security service to provide you with utmost security for your personal information & peace of mind.</p>
---	---	--

Any charges made through this site will appear as Global Simulators Limited.

All trademarks are the property of their respective owners.

Copyright © certbus, All Rights Reserved.