

200-901^{Q&As}

Developing Applications and Automating Workflows using Cisco
Platforms (DEVASC)

Pass Cisco 200-901 Exam with 100% Guarantee

Free Download Real Questions & Answers **PDF** and **VCE** file from:

<https://www.certbus.com/200-901.html>

100% Passing Guarantee
100% Money Back Assurance

Following Questions and Answers are all new published by Cisco
Official Exam Center

- ⚙️ **Instant Download** After Purchase
- ⚙️ **100% Money Back** Guarantee
- ⚙️ **365 Days** Free Update
- ⚙️ **800,000+** Satisfied Customers



QUESTION 1

DRAG DROP Refer to the exhibit.

List the clients that have used this network in the timespan

HTTP REQUEST

```
GET /networks/ {networkId}/clients
```

PARAMETERS

t0

The beginning of the timespan for the data. The maximum lookback period is 31 days from today.

timespan

The timespan for which the information will be fetched. If specifying timespan, do not specify parameter t0. The value must be in seconds and be less than or equal to 31 days. The default is 1 day.

perPage

The number of entries per page returned. Acceptable range is 3 – 1000. Default is 10.

startingAfter

A token used by the server to indicate the start of the page. Often this is a timestamp or an ID but it is not limited to those. This parameter should not be defined by client applications. The link for the first, last, prev, or next page in the HTTP Link header should define it.

endingBefore

A token used by the server to indicate the end of the page. Often this is a timestamp or an ID but it is not limited to those. This parameter should not be defined by client applications. The link for the first, last, prev, or next page in the HTTP Link header should define it.

Drag and drop the code from the left code from the left onto the item number on the right to complete the Meraki code to obtain a list of client which have used this network.

Select and Place:

```
base_url = https://api.meraki.com/api/v0"
network_id = "L_12345678910"
api_key = "1098hadpfsiapsf8ahf8ohp"
requests.<item 1> (
    <item 2> + "/<item 3>/" + /<item 4>, "/<item 5>",
    headers = {
        "X-Cisco-Meraki-API-Key": "<item 6>",
        "Content-Type": "<item 7>"
    },
    <item 8>={"<item 9>":/<item 10>})
```

Correct Answer:

params	<item 1>
networks	<item 2>
timespan	<item 3>
get	<item 4>
432000	<item 5>
base_url	<item 6>
application/json	<item 7>
network_id	<item 8>
clients	<item 9>
api_key	<item 10>

	get
	base_url
	networks
	network_id
	clients
	api_key
	application/json
	params
	timespan
	432000

QUESTION 2

What are two functions of a routing table on a network device? (Choose two.)

- A. It lists the routes to drop traffic.
- B. It lists the routes to a particular destination.
- C. It lists the static and dynamic entries.

- D. It lists hosts that are one hop away.
- E. It lists entries more than two hops away.

Correct Answer: BC

QUESTION 3

A company has written a script that creates a log bundle from the Cisco DNA Center every day. The script runs without error and the log bundles are produced. However, when the script is run during business hours, people report poor voice quality of phone calls. What explains this behavior?

- A. The script is written in a low-level programming language where there is no memory safety. This causes a buffer overflow and disruption on the network.
- B. The speed and duplex settings in Cisco DNA Center are set incorrectly, which causes the transfer to be too slow.
- C. The script is running in the Voice VLAN and causes delays and jitter in the subnet.
- D. Generating the logs causes the CPU on the network controller to spike, which causes delays in forwarding the voice IP packets.

Correct Answer: C

QUESTION 4

Refer to the exhibit.

```
import requests
from requests.auth import HTTPBasicAuth
from config import url, username, password
response = requests.login(url, auth=HTTPBasicAuth (username, password), verify=False)
print response.status_code
```

The script returns an output of 401. To use the supplied URL, an HTTP GET request must be sent with an Authorization header. The header value is a Base64 encoded concatenation of the username and password. Which action must be taken to return an output of 200?

- A. Change the verify=False setting in the request to verify=True to enable HTTP Basic authentication
- B. Modify the method from LOGIN to GET and supply the username ;password value as JSON payload
- C. Verify that the username and password values imported from the configuration file are still valid.
- D. Insert an Authorization header with the values username password from the supplied configuration file.

Correct Answer: B

This seems like a trick question. Simply changing "login" to "get" should fix it. You're still keeping the HTTPBasicAuth header intact while also sending the user/pass in the json payload according to this answer. Sending it in the payload shouldn't do anything since it's a simple GET. The payload will be ignored and the basic auth header will be used.

QUESTION 5

Which protocol runs over TCP port 23?

- A. SSH
- B. NETCONF
- C. HTTP
- D. Telnet

Correct Answer: D

QUESTION 6

Refer to the exhibit.

```
import os
import requests

# username and password

API_USER_NAME = "devnetuser"
API_PASSWORD = os.environ['API_PASSWORD']

requests.get('https://api.cisco.com/end-service', auth=(API_USER_NAME, API_PASSWORD))
```

An engineer must authorize a REST API call. The API password is "Cisco123!". Which Bash command must be placed in the code to authorize the call?

- A. mkdir API_PASSWORD=Cisco123!
- B. set API_PASSWORD=Cisco123!
- C. cp API_PASSWORD=Cisco123!
- D. export API_PASSWORD=Cisco123!

Correct Answer: D

QUESTION 7

Which application should be used to externally access all applications deployed in the same host machine with a single public IP address and port, when each application listens on different local ports?

- A. reverse proxy
- B. load balancer

C. DNS

D. firewall

Correct Answer: A

One option for accessing multiple applications on a single host machine with a single public IP address and port is to use a reverse proxy. A reverse proxy is a type of server that sits in front of one or more backend servers, intercepting traffic from clients and forwarding it to the appropriate backend server.

To use a reverse proxy in this scenario, you would configure the reverse proxy to listen on the public IP address and port, and then configure it to forward traffic to the appropriate local port based on the hostname or URL requested by the client

QUESTION 8

In test-driven development, what are two of the green bar patterns? (Choose two.)

A. another test

B. break

C. triangulate

D. starter test

E. fake it

Correct Answer: CE

<https://www.cs.uic.edu/~i442/Patterns%20for%20TDD.pdf>

QUESTION 9

A developer has experienced security issues with a previously developed application. The API offered by that application is open and without any constraints. During a recent attack, the application was overloaded with API requests. To address this issue, an API constraint is implemented to protect the application from future attacks or any sudden throttling. Which API constraint must the application developer implement in this situation?

A. pagination

B. rate limiting

C. filtering

D. payload limiting

Correct Answer: B

QUESTION 10

What is a benefit of a CI/CD pipeline for infrastructure?

- A. removes manual errors
- B. enables manual steps
- C. removes the need for operations
- D. provides variety for deployments

Correct Answer: A

QUESTION 11

DRAG DROP

Drag and drop the capability on the left onto the Cisco compute management platform that supports the capability on the right.

Select and Place:

Multi-Cloud automation and orchestration platform for Cisco and third-party servers, networks, storage, and converged infrastructure.	UCS Manager
Software as a Service Platform that enables Cisco infrastructure management, automation and orchestration from anywhere.	UCS Director
Embedded software that enables Cisco server, fabric, and storage provisioning.	Intersight

Correct Answer:

	Embedded software that enables Cisco server, fabric, and storage provisioning.
	Multi-Cloud automation and orchestration platform for Cisco and third-party servers, networks, storage, and converged infrastructure.
	Software as a Service Platform that enables Cisco infrastructure management, automation and orchestration from anywhere.

QUESTION 12

Which action does the Git command git merge allow the developer to perform?

- A. Combine multiple sequences of commits into one unified history
- B. Push changes to the remote repository
- C. Create, list, rename, and delete branches
- D. Switch between branches

Correct Answer: A

Git merge will combine multiple sequences of commits into one unified history. In the most frequent use cases, git merge is used to combine two branches. Reference: <https://www.atlassian.com/git/tutorials/using-branches/git-merge>

QUESTION 13

DRAG DROP

Drag and drop the requests from the left into the correct order on the right to create and check the path trace between two devices using Cisco DNA center API.

Select and Place:

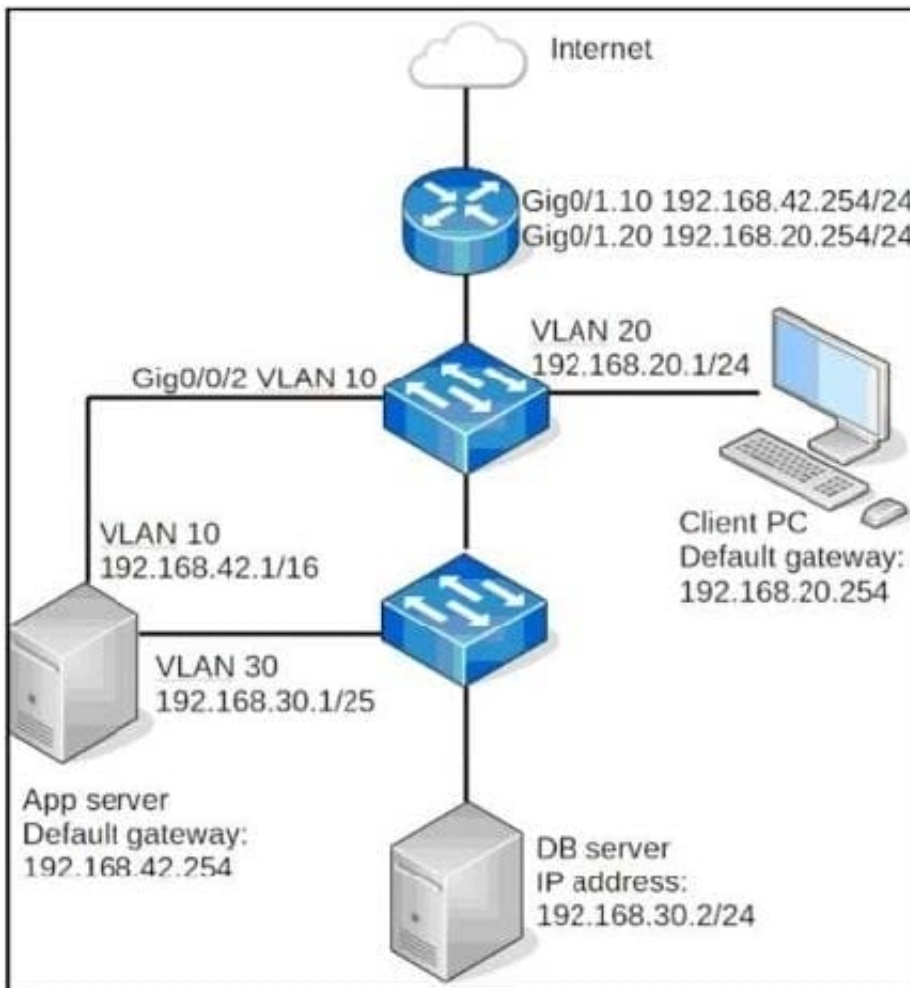
GET /api/v1/flow-analysis/{flowAnalysisId}	Step 1
POST /api/v1/flow-analysis	Step 2
POST /api/system/v1/auth/token	Step 3
GET /api/v1/network-device/ and choose IP of source and destination devices	Step 4

Correct Answer:

	GET /api/v1/network-device/ and choose IP of source and destination devices
	POST /api/system/v1/auth/token
	GET /api/v1/flow-analysis/{flowAnalysisId}
	POST /api/v1/flow-analysis

QUESTION 14

Refer to the exhibit. The internal client cannot access the app server, but access still works for clients on the Internet. Which two actions resolve the issue? (Choose two.)



- A. Move port Gi0/0/2 to VLAN 20.
- B. Add a host route on the server to the client.
- C. Change the subnet length on the client to 16.
- D. Change the subnet length on the server to 24.
- E. Add a host route on the client to the server.

Correct Answer: BE

QUESTION 15

DRAG DROP

Drag and drop the first four stages of a DevOps toolchain from the left into the order on the right to create a new complex product. Not all options are used.

Select and Place:

Gather requirements and assign development tasks.	stage 1
Review uptime and performance.	stage 2
Combine code with infrastructure requirements.	stage 3
Design, build, and test application code.	stage 4
Set necessary properties, files, and dependencies.	
Perform acceptance and integration testing and security scans.	

Correct Answer:

	Gather requirements and assign development tasks.
Review uptime and performance.	Set necessary properties, files, and dependencies.
	Combine code with infrastructure requirements.
	Design, build, and test application code.
Perform acceptance and integration testing and security scans.	