

100% Money Back
Guarantee

Vendor: Oracle

Exam Code: 1Z0-547

Exam Name: Sun Storage 7000 Unified Storage Systems
Essentials

Version: Demo

QUESTION NO: 1

What does the term "outlier elimination" that is used in the 7000-series system mean?

- A. Truncating chronological data
- B. Removing inactive client sessions
- C. Throttling throughput with busy clients
- D. Blocking errant processes
- E. Cropping the highest data points from view

Answer: E

Explanation: Vertical outlier elimination. Without this, the y-axis would always be compressed to include the highest event. Click the crop outliers icon to toggle between different percentages of outlier elimination. Mouse over this icon to see the current value.

Reference: Sun ZFS Storage 7000 Analytics Guide, Quantize Plot

QUESTION NO: 2

Which three items are available via the Status Dashboard in the Browser User Interface (BUI)?

- A. Summary of storage pool and main memory usage
- B. Known hardware faults
- C. Status of each physical network port
- D. Status of services on the appliance

Answer: A,B,D

Explanation: The Status > Dashboard screen provides a view of storage(A), memory(A), services(D), hardware, activity, and recent alerts.

B: Hardware

This area of the Dashboard shows an overview of hardware on the appliance.

Faults

If there is a known fault, the amber fault icon appears.

D: Services

This area of the Dashboard shows the status of services on the appliance, with a light icon to show the state of each service.

Reference: Sun ZFS Storage 7000 System Administration Guide, Dashboard

QUESTION NO: 3

Which three statements are true?

- A. One share can have multiple protocol access to its data
- B. The identity mapping feature can manage Windows and UNIX user Identities simultaneously on the same share.
- C. All shares within one project can share common settings.
- D. Snapshot and Replication can be done at the share level only.
- E. One of the share properties that protects the share against accidental deletion of the share is "read only."

Answer: A,C,E

Explanation:

A: A share is a ZFS filesystem shared using data protocols

C: Shares can be grouped into projects for common administrative purposes, including space management and common settings.

A project defines a common administrative control point for managing shares. All shares within a project can share common settings, and quotas can be enforced at the project level in addition to the share level.

E: Share property Types Read Only: These properties represent statistics about the project and share and cannot be changed. The most common properties of this type are space usage statistics.

QUESTION NO: 4

Enterprise solid state devices (SSDs) based on NAND technology are a critical component of the 7000-series systems. Which statement is true?

- A. Flash technology completes operations as fast as, or better than, DRAM.
- B. Enterprise SSDs support bad block management, wear leveling, and error correction codes (ECC) for data integrity
- C. Read-optimized SSDs are used in place of NVRAM to host the ZFS Intent Log (ZIL)
- D. Write-based SSDs are used to extend the ZFS cache (L2ARC) for reads and writes

Answer: D

Explanation: The L2ARC is the 2nd Level Adaptive Replacement Cache, and is an SSD based cache that is accessed before reading from the much slower pool disks.

QUESTION NO: 5

Which Command Line Interface (CLI) command provides hardware status details?

- A. Maintenance hardware show
- B. Hardware status is not available through the CLI
- C. Status hardware show
- D. Status dashboard hardware

Answer: A

Explanation: Hardware status details are available in the CLI under the maintenance hardware section. Use

show to list the status of all components. The list command will list available chassis, which can be selected and then viewed using show.

Example:

```
tarpon:> maintenance hardware show
```

Chassis:

```
NAME STATE MANUFACTURER MODEL
```

```
chassis-000 0839QCJ01A ok Sun Microsystems, Inc. Sun Storage 7410
```

```
cpu-000 CPU 0 ok AMD Quad-Core AMD Op
```

```
cpu-001 CPU 1 ok AMD Quad-Core AMD Op
```

```
cpu-002 CPU 2 ok AMD Quad-Core AMD Op
```

```
cpu-003 CPU 3 ok AMD Quad-Core AMD Op
```

```
disk-000 HDD 0 ok STEC MACH8 IOPS
```

```
disk-001 HDD 1 ok STEC MACH8 IOPS
```

```
disk-002 HDD 2 absent - -
```

```
disk-003 HDD 3 absent - -
```

```
disk-004 HDD 4 absent - -
```

```
disk-005 HDD 5 absent - -
```

```
disk-006 HDD 6 ok HITACHI HTE5450SASUN500G
```

```
disk-007 HDD 7 ok HITACHI HTE5450SASUN500G
```

```
fan-000 FT 0 ok unknown ASY,FAN,BOARD,H2
```

```
fan-001 FT 0 FM 0 ok Sun Microsystems, Inc. 541-2068
```

```
fan-002 FT 0 FM 1 ok Sun Microsystems, Inc. 541-2068
```

```
fan-003 FT 0 FM 2 ok Sun Microsystems, Inc. 541-2068
```

```
fan-004 FT 1 ok unknown ASY,FAN,BOARD,H2
```

fan-005 FT 1 FM 0 ok Sun Microsystems, Inc. 541-2068
fan-006 FT 1 FM 1 ok Sun Microsystems, Inc. 541-2068
fan-007 FT 1 FM 2 ok Sun Microsystems, Inc. 541-2068
memory-000 DIMM 0/0 ok HYNIX 4096MB
DDR-II 66
memory-001 DIMM 0/1 ok HYNIX 4096MB
DDR-II 66

Reference: Sun Storage 7000 Unified Storage System Service Manual, CLI

QUESTION NO: 6

Which three are supported methods for viewing system statistics?

- A. Analytics
- B. Solaris stat tools: iostat(1M), vmstat(1M), and so on
- C. Appliance CLI
- D. Oracle SunPlex Manager
- E. SNMP

Answer: A,C,E

Explanation: A: Analytics statistics provide incredible appliance observability, showing how the appliance is behaving and how clients on the network are using it.

C:

Note: The Sun ZFS Storage Appliance's scripting functionality is implemented by a JavaScript Language Interpreter build in the appliance CLI layer.

E: The SNMP (Simple Network Management Protocol) service provides two different functions on the appliance:

* Appliance status information can be served by SNMP.

* Alerts can be configured to send SNMP traps

Both SNMP versions 1 and 2c are available when this service is enabled

QUESTION NO: 7

Log devices are designed to improve the performance of asynchronous write workloads.

- A. True
- B. False

Answer: B

Explanation: Log devices are used to prevent data loss, not to improve performance.

Note: The data on log devices is only used in the event of node failure, so in order to lose data with an unmirrored log device it is necessary for both the device to fail and the node to reboot within a few seconds.

QUESTION NO: 8

Which two statements regarding thin provisioning are true?

- A. The property for thin provisioned may only be set on a LUN
- B. The property for thin provisioned may be set on a share or LUN
- C. A LUN that is thinly provisioned will only represent to the host the physical amount of space used
- D. A thinly provisioned LUN will represent to the host the defined LUN size, and not the actual physical space used

Answer: A,D

Explanation: Thin provisioned

Controls whether space is reserved for the volume. This property is only valid for LUNs.

By default, a LUN reserves exactly enough space to completely fill the volume. This ensures that clients will not get out-of-space errors at inopportune times. This property allows the volume size to exceed the amount of available space. When set, the LUN will consume only the space that has been written to the LUN. While this allows for thin provisioning of LUNs, most file systems do not expect to get "out of space" from underlying devices, and if the share runs out of space, it may cause instability and/or data corruption on clients.

When not set, the volume size behaves like a reservation excluding snapshots. It therefore has the same pathologies, including failure to take snapshots if the snapshot could theoretically diverge to the point of exceeding the amount of available space

Reference: Sun ZFS Storage 7000 System Administration Guide, Thin provisioned

QUESTION NO: 9

What type of I/O workload is likely to get the most benefit from read SSDs?

- A. Random write
- B. Random read
- C. Sequential read
- D. Sequential write
- E. Mixed random and sequential write

Answer: B

Explanation: The L2ARC is the 2nd Level Adaptive Replacement Cache, and is an SSD based cache that is

accessed before reading from the much slower pool disks. The L2ARC is currently intended for random read workloads.

Reference: Sun ZFS Storage 7000 Analytics GuideCache: L2ARC I/O bytes

QUESTION NO: 10

Which two items are the correct and supported ways to add user accounts to the 7000-series system?

- A. Editing/etc/passwd and/etc/shadow
- B. After logging in to the BUI as root, click the Maintenance: Users: Add User via the plus (+) sign and fill out the blanks; click Apply.
- C. Using ssh, add users via the CLI by "configuration users create". Set the properties, and commit.
- D. Using ssh, add users via the CLI by "configuration users user newname" where newname is the new userID to be added.
- E. From the BUI as root, click Configuration: USERS: plus(+) sign to add a new user and fill out the blanks; click add.
- F. Add user accounts in active directory, LDAP, or NIS. User accounts don't usually need to be added to the 7000.

Answer: D,E

Explanation: D:CLI

See set 4 below.

Adding an administrator

E:Go to Configuration->Users. Add user.

The BUI Users page lists both users and groups, along with buttons for administration.

Mouse-over an entry to expose its clone, edit and destroy buttons. Double-click an entry to view its edit screen.

QUESTION NO: 11

What is the unique identifier of a device in an iSCSI network?

- A.** Initiator target device (ITD)
- B.** ICN-Initiator CHAP name
- C.** iSCSI LUN designator (ILD)
- D.** IQN-iSCSI qualified name
- E.** iSCSI device id

Answer: D

Explanation: In an iSCSI configuration, the iSCSI host or server sends requests to a node. The host contains one or more initiators that attach to an IP network to initiate requests to and receive responses from an iSCSI target. Each initiator and target are given a unique iSCSI name such as an iSCSI qualified name (IQN) or an extended-unique identifier (EUI). An IQN is a 223-byte ASCII name.

QUESTION NO: 12

Worksheets can be exported as part of a support bundle.

- A.** True
- B.** False

Answer: A

Explanation: BUI commands includes:

*send worksheet with support bundle

*upload a support bundle that includes this worksheet, allowing for off-line analysis of your system by your support provider. You should only do this if you have been explicitly asked to upload such a bundle by support personnel.

QUESTION NO: 13

The "iSCSI operations" raw statistic can be broken down by?

- A. Initiator
- B. LUN
- C. Command
- D. Latency
- E. All of the above

Answer: E

Explanation: Protocol: iSCSI operations

This statistic shows iSCSI operations/sec (iSCSI IOPS) requested by initiators to the appliance. Various useful breakdowns are available.

Breakdowns

* initiator,iSCSI client initiator

*lun,the LUNfor this iSCSI request.

*command,SCSI command sent by the iSCSI protocol. This can show the real nature of the requested I/O (read/write/sync-cache/...).

*latency.a heat map showing the latency of iSCSI I/O, as measured from when the iSCSI request arrived on the appliance from the network, to when the response is sent; this latency includes the time to process the iSCSI request, and to perform any disk I/O.

Reference: Sun ZFS Storage 7000 System Administration Guide, Protocol: iSCSI operations

QUESTION NO: 14

Analytics provides _____.

- A. A graphical view of iostat statistics, when can be customized to provide lower-level detail.
- B. Real-time CPU and power statistics to maximize utilization and minimize power consumption.
- C. A graphical view of Solaris kstat performance statistics, which can be customized to provide lower-level detail.
- D. Real-time graphs of various statistics, which can be saved for later viewing.

Answer: D

Explanation: Analytics provides real time graphs of various statistics, which can be saved for later viewing

Analytics is an advanced facility to graph a variety of statistics in real-time and record this data for later viewing. It has been designed for both long term monitoring and short term analysis. When needed, it makes use of DTrace to dynamically create custom statistics, which allows

different layers of the operating system stack to be analyzed in detail.

Reference: Sun ZFS Storage 7000 Analytics Guide

QUESTION NO: 15

Random read workloads are usually best served from:

- A. DRAM, followed by pool disks
- B. Read cache devices (Readzillas)
- C. DRAM, followed by read cache devices
- D. Log devices (Logzillas)
- E. Tape drives

Answer: B

Explanation: Readzillas are read-optimized flash SSD for the L2ARC.

Reference: Sun ZFS Storage 7000 System Administration Guide

QUESTION NO: 16

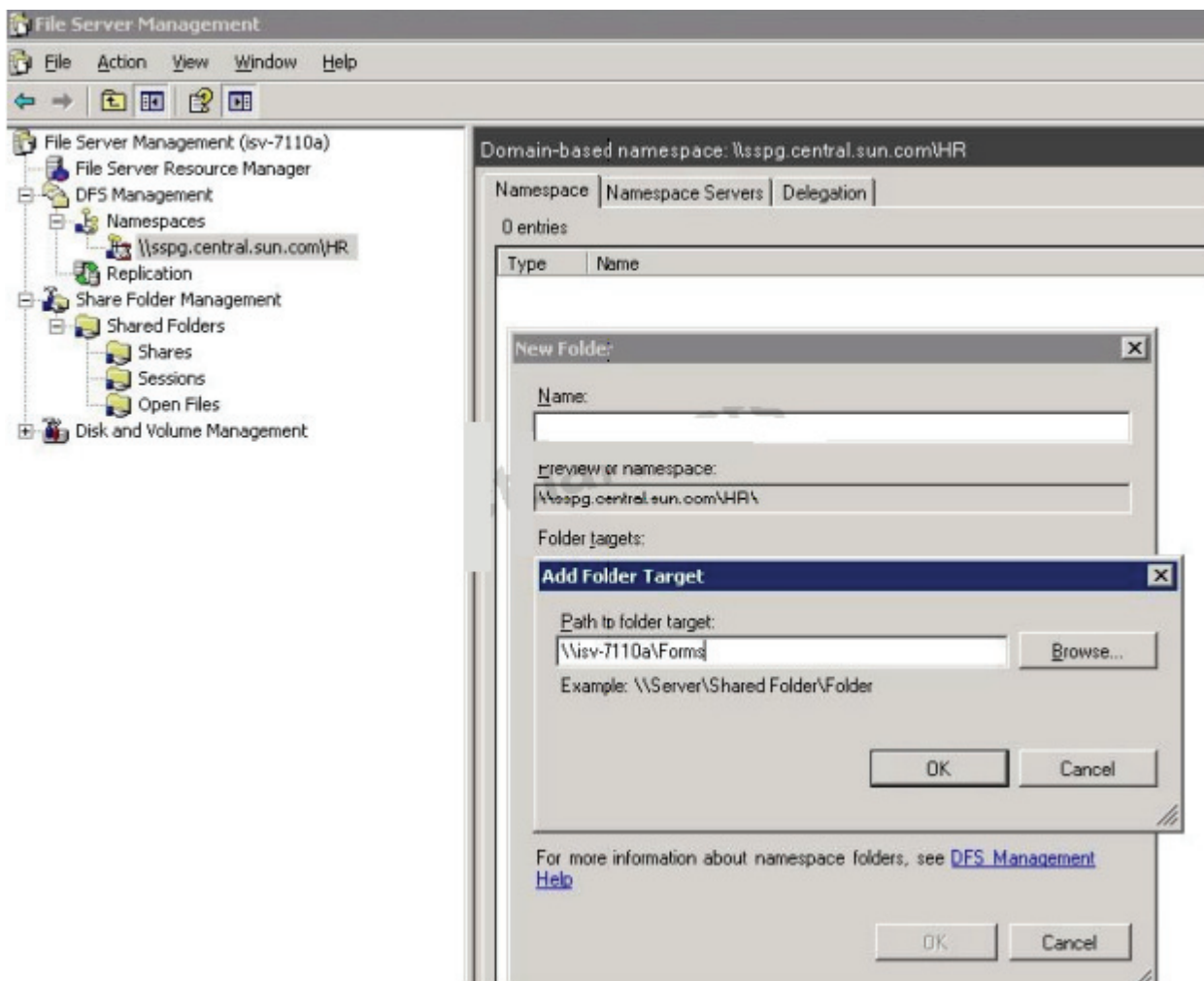
What tool can be used to set up DFS target shares coming from a 7000 series system?

- A. The File Server Management Console from a Windows 2003R2 server with the File Server Role enabled
- B. The Computer Management Console from a Windows 2003R2 server with the Domain Controller Role enabled
- C. The 7000-series system Command Line Interface
- D. The 7000-series system Web Console

Answer: A

Explanation: The Distributed File System (DFS) solution in Windows Server 2003 R2 allows administrators to group shared folders across the network into a virtual tree of folders called a namespace. The current 7000 software release allows for an appliance CIFS share to act as a DFS target. A namespace root must already be active on an alternate object in Active Directory. CIFS shares from the 7000 may be added as targets to any DFS root.

To add a CIFS share from the 7000 as a target or DFS referral, click add folder from an existing DFS root share, in this case a domain wide share of \\sspg\HR, as shown in Illustration



Reference: Microsoft Windows Integration on the Sun Storage 7000, Implementation Guide, DFS Target

QUESTION NO: 17

Data integrity is provided through which two features?

- A. Enhanced version of UFS
- B. Copy-on-write operations
- C. Parallel reads and writes to the same file
- D. Memory-based, end-to-end checksumming

Answer: B,D

Explanation: B:ZFS use Copy-On-Write, which means old data is not altered. Whenever data is edited and updated, the old data is always left intact, and only the edits are stored, on a new place on the disk. This means every change can be traced back in time. This allows the user to discard

the latest change which caused the problem, and instead go back to an earlier functioning state. This is also how ZFS Snapshots works.

D: To maximize the availability of your data in production, Sun ZFS Storage appliances include a complete end-to-end architecture for data integrity, including redundancies at every level of the stack. Key features include:

*the ZFS file system provides memory-based end-to-end data and metadata checksumming with self-healing capabilities to fix potential issues.

Note: ZFS is a combined file system and logical volume manager designed by Sun Microsystems. The features of ZFS include data integrity verification against data corruption modes, support for high storage capacities, integration of the concepts of filesystem and volume management, snapshots and copy-on-write clones, continuous integrity checking and automatic repair, RAID-Z and native NFSv4 ACLs.

One major feature that distinguishes ZFS from other file systems is that ZFS is designed from the ground up with a focus on data integrity. That is, protect the user's data on disk, against silent data corruption caused by e.g., bit rot, current spikes, bugs in disk firmware, ghost writes, etc.

Reference: Sun Storage 7000 Unified Storage System, Just the Facts

QUESTION NO: 18

The 7000-series system comes predefined with usernames and passwords for which two items below?

- A. Root
- B. Admin
- C. User
- D. Operator
- E. Root on the SP
- F. Admin on the SP

Answer: A,E

Explanation: The process to reset the root password on a Sun Storage 7000 appliance involves two basic steps. The first step is to clear the password for the system's Service Processor. Once the service processor password has been reset, we can use it in the second step to interrupt the system initialization process so that we can force the appliance configuration to start.

Reference: <https://wikis.oracle.com/display/FishWorks/How+To+Reset+the+Root+Password+on+the+7000+Series>

QUESTION NO: 19

What is the only mode in which the SRP service can operate?

- A. Link mode
- B. Initiator mode
- C. Peer mode
- D. Target mode
- E. HCA mode

Answer: D

Explanation: The SRP service may only operate in target mode.

Reference: Sun ZFS Storage 7000 System Administration Guide, SRP, Target configuration

QUESTION NO: 20

What is the maximum number of storage controllers that can form a single cluster?

- A. 1
- B. 2
- C. 4
- D. 255
- E. unlimited

Answer: B

Explanation: It is important to understand the scope of the Sun ZFS Storage 7000 series clustering

implementation. The term 'cluster' is used in the industry to refer to many different technologies with a variety of purposes. We use it here to mean a metasystem comprised of two appliance heads and shared storage, used to provide improved availability in the case in which one of the heads succumbs to certain hardware or software failures. A cluster contains exactly two appliances or storage controllers.

Reference: Sun ZFS Storage 7000 System Administration Guide, Clustering, Features and Benefits

QUESTION NO: 21

Remote replication is optimized for which three use cases?

- A. Replication can be used to distribute data (such as virtual machine images or media) to remote systems across the world.
- B. Replication can be used to migrate data and configuration when upgrading hardware.
- C. Replication can be configured from an appliance to itself or its cluster peer for redundancy.
- D. Replication can be used to mirror an appliance for disaster recovery

Answer: A,D

Explanation: Remote replication (or just "replication") is a general-purpose feature optimized for the following use cases:

* Data distribution (A)

Replication can be used to distribute data (such as virtual machine images or media) to remote systems across the world in situations where clients of the target appliance wouldn't ordinarily be able to reach the source appliance directly, or such a setup would have prohibitively high latency. One example uses this scheme for local caching to improve latency of read-only data (like documents).

* Data migration (B)

Replication can be used to migrate data and configuration between 7000 series appliances when upgrading hardware or rebalancing storage. Shadow migration can also be used for this purpose.

* Disaster recovery (D)

Replication can be used to mirror an appliance for disaster recovery.

Reference: Sun ZFS Storage 7000 System Administration Guide, Remote Replication Introduction

QUESTION NO: 22

What are the supported methods for viewing system statistics?

- A. Analytics only
- B. Analytics and the appliance CLI
- C. Solaris stat tools: iostat(1M), vmstat(1M), and so on
- D. Analytics and Solaris stat tools: iostat(1M), vmstat(1M), and so on
- E. Top(1M)

Answer: B

Explanation:

QUESTION NO: 23

When setting up the network configuration on a 7000-series system, what does the term 'datalink' refer to?

- A. IP partitions
- B. Configuring IP addresses
- C. Managing devices utilized by interfaces
- D. Connecting a target to a LUN
- E. Linking multiple IP addresses to sources

Answer: C

Explanation: Datalinks

These manage devices, and are used by interfaces. They support:

*VLANs - Virtual LANs to improve local network security and isolation.

*LACP - Link Aggregation Control Protocol, to bundle multiple network devices to behave as one. This improves performance (multiplies bandwidth) and reliability (can survive network port failure), however the appliance must be connected to a switch that supports LACP and has it enabled for those ports.

*IB Partitions - Infiniband partitions to connect to logically isolated IB fabric domains.

Reference: Sun ZFS Storage 7000 System Administration Guide, Datalinks

QUESTION NO: 24

The 7000-series system has the ability to archive data sets (statistics):

- A. only while they are being examined in Analytics
- B. only for one month
- C. for one month at one second granularity, and then 12 months at one hour granularity
- D. only for 12 months
- E. indefinitely

Answer: E

Explanation: The following actions may be performed on statistics/datasets:

* archive

Sets the statistic to be permanently opened and archived to disk. If the statistic had already been opened, then all cached data in memory is also archived to disk.

Archiving statistics creates permanent datasets, visible in the Datasets view (those with a non-zero "on disk" value). This is how statistics may be recorded 24x7, so that activity from days, weeks and months in the past can be viewed after the fact.

- * open
- * close
- * destroy
- * Suspend
- * resume

Note: A dataset refers to all existing data for a particular statistic. Datasets contain:

- *Statistic data cached in memory due to the statistic being opened or archived.
- *Archived statistic data on disk.

Reference: Sun ZFS Storage 7000 System Administration Guide, datasets, actions

QUESTION NO: 25

Which item below allows you to configure snapshots in order to ensure application consistency?

- A.** Schedule snapshots to occur at a specific time each day
- B.** Quiesce, sync, or shutdown the application and then take a snapshot of the master lun
- C.** Quiesce, sync, or shutdown the application prior to taking a snapshot of the project defined for the application
- D.** Schedule project snapshots to occur periodically. This way you will be sure to get all open files by the end of the day.

Answer: D

Explanation: A snapshot is a point-in-time copy of a filesystem or LUN. Snapshots can be created manually or by setting up an automatic schedule.

Project snapshots are the equivalent of snapshotting all shares within the project, and snapshots are identified by name.

Reference: Sun ZFS Storage 7000 System Administration Guide, Snapshots

QUESTION NO: 26

The _____ on the Status Dashboard can be customized.

- A. services and statistics
- B. services and hardware
- C. services and thresholds
- D. statistics and thresholds

Answer: D

Explanation: The Status > Settings screen enables you to customize the Status Dashboard, including the statistics that appear and thresholds that indicate activity through the weather icons.

*Use the Thresholds screen to configure the dashboard activity weather icons. The defaults provided are based on heavy workloads, and may not be suitable for your environment.

Reference: Sun ZFS Storage 7000 System Administration Guide

QUESTION NO: 27

Which is likely to be the fastest storage profile for random disk IOPS?

- A. RAID-Z1: single parity RAID
- B. RAID-Z2: double parity RAID
- C. RAID-Z3: triple parity RAID
- D. RAID-ZR: random parity RAID
- E. mirroring

Answer: A

Explanation:

QUESTION NO: 28

Which two capabilities are available when 7000-series systems are clustered?

- A. Allows load balancing among multiple heads
- B. Allows a peer appliance to provide service while repair is performed
- C. Provides clients with a unified filesystem namespace across multiple appliances
- D. Allows rolling upgrade of software

Answer: B,D

Explanation: B:As an alternative to incurring hours or days of downtime while the head is repaired, clustering

allows a peer appliance to provide service while repair or replacement is performed.

D: Clusters support rolling upgrade of software, which can reduce the business disruption associated with migrating to newer software.

Note:It is important to understand the scope of the Sun ZFS Storage 7000 series clustering implementation. The term 'cluster' is used in the industry to refer to many different technologies with a variety of purposes. We use it here to mean a metasystem comprised of two appliance heads and shared storage, used to provide improved availability in the case in which one of the heads succumbs to certain hardware or software failures. A cluster contains exactly two appliances or storage controllers.

Reference: Sun ZFS Storage 7000 System Administration Guide,Clustering,Features and Benefits

QUESTION NO: 29

When you are configuring Active Directory services, domain mode permits CIFS clients to?

- A. Add domains to users and groups
- B. Authenticate globally
- C. Only do global authentication
- D. Set LDAP domain properties
- E. Authenticate CIFS clients thru AD domain controller

Answer: B

Explanation: Instead of enabling and disabling the service directly, the service is modified by joining a

domain or a workgroup. Joining a domain involves creating an account for the appliance in the given Active Directory domain. After the computer account has been established, the appliance can securely query the database for information about users, groups, and shares.

Joining a workgroup implicitly leaves an Active Directory domain, and CIFS clients who are stored in the Active Directory database will be unable to connect to shares.

Reference: Sun ZFS Storage 7000 System Administration Guide,Domains andWorkgroups

QUESTION NO: 30

Which share property cannot be changed on-the-fly?

- A. Data compression
- B. Database record size
- C. Synchronous write bias
- D. Cache device usage
- E. Case sensitivity

Answer: E

Explanation:

Reference: Sun ZFS Storage 7000 System Administration Guide,Editing Share Properties

QUESTION NO: 31

When ample storage space is available, which storage profile should be selected when both high performance and high reliability are required?

- A. Striped
- B. Mirrored
- C. Double-parity RAID
- D. Single-parity RAID, narrow stripes

Answer: C

Explanation:

Incorrect answers

A: No reliability with striped

B: Low performance with mirrored.

Note:Wide Striping occurs when chunks of data are spread across multiple arrays, possibly all the drives in the system. Narrow Striping occurs when the chunks of data are spread across the drives in a single array.

QUESTION NO: 32

Which two items define why the CLUSTRON (Cluster Control) relies on serial links for inter-head communications?

- A. Serial links provide greater reliability and are sufficient for a heartbeat.
- B. Both InfiniBand and serial links are used for performance and reliability.
- C. Serial links take interrupts at high priority.
- D. InfiniBand links are used, and not serial links.

Answer: A,C

Explanation: All inter-head communication consists of one or more messages transmitted over one of the three cluster I/O links provided by the CLUSTRON hardware. This device offers two low-speed serial links and one Ethernet link. The use of serial links allows for greater reliability; Ethernet links may not be serviced quickly enough by a system under extremely heavy load.

The serial links used by the Sun ZFS Storage 7000 series appliances are not susceptible to this failure mode. The Ethernet link provides a higher-performance transport for non-heartbeat messages such as rejoin synchronization and provides a backup heartbeat.

QUESTION NO: 33

A clustered controller must contain spare resources (such as networking ports) to accommodate a failover.

- A. True
- B. False

Answer: B

Explanation: Network device, datalink, and interface failures do not cause the clustering subsystem to consider a head to have failed. To protect against network failures — whether inside or outside the appliance — IPMP and/or LACP should be used instead. These network configuration options, along with a broader network-wide plan for redundancy, are orthogonal to clustering and are additional components of a comprehensive approach to availability improvement.

Reference: Sun ZFS Storage 7000 System Administration Guide, Clustering Considerations for Networking

QUESTION NO: 34

Which two properties are available when creating alerts based on statistics from Analytics?

To Read the [Whole Q&As](#), please purchase the [Complete Version](#) from [Our website](#).

Trying our product !

- ★ **100%** Guaranteed Success
- ★ **100%** Money Back Guarantee
- ★ **365 Days** Free Update
- ★ **Instant Download** After Purchase
- ★ **24x7** Customer Support
- ★ Average **99.9%** Success Rate
- ★ More than **69,000** Satisfied Customers Worldwide
- ★ Multi-Platform capabilities - **Windows, Mac, Android, iPhone, iPod, iPad, Kindle**

Need Help

Please provide as much detail as possible so we can best assist you.

To update a previously submitted ticket:



| | | |
|---|---|--|
|  One Year Free Update <p>Free update is available within One Year after your purchase. After One Year, you will get 50% discounts for updating. And we are proud to boast a 24/7 efficient Customer Support system via Email.</p> |  Money Back Guarantee <p>To ensure that you are spending on quality products, we provide 100% money back guarantee for 30 days from the date of purchase.</p> |  Security & Privacy <p>We respect customer privacy. We use McAfee's security service to provide you with utmost security for your personal information & peace of mind.</p> |
|---|---|--|

[Guarantee & Policy](#) | [Privacy & Policy](#) | [Terms & Conditions](#)

Any charges made through this site will appear as Global Simulators Limited.

All trademarks are the property of their respective owners.

Copyright © 2004-2015, All Rights Reserved.