

100% Money Back
Guarantee

Vendor: Oracle

Exam Code: 1Z1-204

Exam Name: Oracle EBS R12: E-Business Essentials

Version: Demo

QUESTION 1

ABC Corp. has a requirement to share business documents from its Oracle E-Business Suite Release 12 (EBS) instance with external business-to-business (B2B) exchange partners. Select the best method that you would recommend to meet this requirement.

- A. Build a workflow process and integrate it with external B2B exchange.
- B. Use notification mailer to share the documents with external B2B exchange.
- C. Use Oracle Applications Framework to integrate with external B2B exchange.
- D. Use the Advanced Workflow Mailer functionality in Oracle E-Business Suite Release 12.
- E. Build a workflow process and use Business Event System to integrate it with an external B2B exchange partner.

Correct Answer: E

QUESTION 2

In Oracle E-Business Suite Release 12, Multiple Language Support (MLS) refers to the ability to support multiple languages in the same Oracle Application instance. Which three statements concerning MLS are true? (Choose three.)

- A. Oracle E-Business Suite Release 12 is available in multiple languages.
- B. Oracle E-Business Suite Release 12 translates all data entered by the user.
- C. UTF8 is the recommended character set for installations that support multiple languages.
- D. The character set you choose during installation determines which languages the instance can support.
- E. The extended multilingual support present in the Oracle E-Business Suite Release 12 data model can increase database storage requirements.

Correct Answer: CDE

QUESTION 3

Identify three features of shared entities in Oracle E-Business Suite Release 12. (Choose three.)

- A. enable one-time definition of objects
- B. are referenced by several Oracle Application modules
- C. are defined in each Oracle Application module separately
- D. are owned by a single Oracle Application module for table purposes only
- E. are owned by a single Oracle Application module to designate the primary user or decision maker

Correct Answer: ABD

QUESTION 4

You can enter and view dates in any valid format in Oracle E-Business Suite Release 12. You can also enter and view numbers with either the period (full stop) character or comma as the decimal separator. Regardless of the various formats that can be used to enter dates and numbers, the actual values are stored in the database in the _____.

- A. UTF8 format
- B. ASCII format
- C. US7ASCII character set
- D. Standard number format
- E. Uniform canonical format

Correct Answer: E

QUESTION 5

Which Oracle resource would you use to log, manage, and resolve product-related issues that you encounter in Oracle E-Business Suite Release 12?

- A. AppsNet
- B. MetaLink
- C. AppsWorld
- D. Bug Database
- E. Oracle Technology Network (OTN)

Correct Answer: B

QUESTION 6

ABC Corp. wants to track and analyze call volumes in its enterprise call centers. Which Daily Business Intelligence product can help achieve this objective?

- A. Sales Intelligence
- B. Quoting Intelligence
- C. Interaction Center Intelligence
- D. Service Contracts Intelligence

Correct Answer: C

QUESTION 7

Identify three features of Key Flexfields. (Choose three.)

- A. Key Flexfields are used as identifiers for entities.
- B. The Key Flexfield structure comprises Segments.
- C. A Key Flexfield structure consists of multiple code combinations.
- D. Key Flexfields appear as a single-space field enclosed in brackets.
- E. Each segment of a Key Flexfield usually contains meaningful information.

Correct Answer: ABE

QUESTION 8

Select the three options available when creating the Security profile for Multi-Org Access Control. (Choose three.)

- A. View all Organizations
- B. Secure by Business Groups
- C. Secure by Inventory Organizations
- D. Secure by Operating Unit and Inventory Organization
- E. Secure Organizations by Organization list and/or hierarchy

Correct Answer: ADE

QUESTION 9

Select four required attributes when defining a Ledger in Oracle E-Business Suite Release 12. (Choose four.)

- A. Calendar
- B. Currency
- C. Legal Entity
- D. Business Group
- E. Chart of Accounts
- F. Accounting Convention

Correct Answer: AB EF

QUESTION 10

A table has 15 Attribute columns to capture additional information. The attributes 1-12 are set up in the Descriptive Flexfield as Global Segments. How many attributes can be set up under any new context?

- A. 1
- B. 3
- C. 15
- D. 12
- E. 11

Correct Answer: B

QUESTION 11

Company X has three Operating Units: A, B, and C. Each Operating Unit has the MO:Security Access profile option called ABC Security assigned. Operating Unit A has both the MO: Operating Unit profile option and the MO: Default Operating Unit profile option assigned to it.

Which statement is true?

- A. Paul can create transactions for the A, B, and C Operating Units.
- B. All transactions created by Paul are automatically assigned to the Operating Unit A.
- C. Paul can report on data across A, B, and C Operating Units, but enter transactions only against A.
- D. The profile option did not include Operating Unit B and Operating Unit C due to an error by the system administrator.
- E. The Payables responsibility is linked to the Operating Unit A by the MO: Operating Unit profile option and can create transactions for that Operating Unit alone.

Correct Answer: A

QUESTION 12

A global company uses Oracle E-Business Suite Release 12 for its operations in the U.S. and Canada. The company is now adding Mexico to the Oracle E-Business Suite Release 12 Applications. As a system administrator, you need to set the MO: Operating Unit profile option for Mexico. Customer is not using Multi-Org Access Control. You set the MO: Operating Unit profile option at the _____ level.

- A. Site
- B. User
- C. Application
- D. Responsibility

Correct Answer: D

QUESTION 13

Identify the minimum prerequisites that should be met for deleting an Oracle Alert.

- A. Alert has no history and no enabled action sets.
- B. Alert has no history and no outstanding responses.
- C. Alert has no enabled action sets and no outstanding responses.
- D. Alert has no history, no enabled action sets, and no outstanding responses.

Correct Answer: D

QUESTION 14

The APPL_TOP directory in Oracle E-Business Suite Release 12 contains _____.

- A. redo log files
- B. database files
- C. data tablespaces
- D. index tablespaces

- E. the system tablespace
- F. the product directories and files for Oracle Applications

Correct Answer: F

QUESTION 15

Which business flow is used for activities starting from product purchase to creating and closing service requests?

- A. Click to Order
- B. Campaign to Order
- C. Contract to Renewal
- D. Request to Resolution

Correct Answer: D

QUESTION 16

ABC Corporation will be implementing Oracle E-Business Suite Release 12. Purchasing, Payables, Receivables, General Ledger, Assets, Projects, Order Management and Cash Management will be implemented. Select three business flows that would involve these products. (Choose three.)

- A. Click to Order
- B. Order to Cash
- C. Procure to Pay
- D. Project to Profit
- E. Demand to Build
- F. Campaign to Order

Correct Answer: BCD

QUESTION 17

Identify two Descriptive Flexfield components whose values are used to determine Contexts. (Choose two.)

- A. the Context field
- B. Global Segments
- C. the Reference field
- D. Context-sensitive Segments

Correct Answer: AC

QUESTION 18

Daily Business Intelligence reporting is available across all major product areas. Identify the Daily Business Intelligence tool that would provide manufacturing costs for an item over time by various cost elements.

- A. Product Intelligence
- B. Financials Intelligence
- C. Purchasing Intelligence
- D. Commodity Intelligence
- E. Manufacturing Intelligence

Correct Answer: A

QUESTION 19

What is the base release for Oracle E-Business Suite Release 12?

- A. 11.0.0

- B. 12.0.0
- C. 12.0.1
- D. 11.0.1
- E. 12.1.0

Correct Answer: B

QUESTION 20

Identify the sequence of steps to determine the Descriptive Flexfield name on a form in Oracle E- Business Suite Release 12 with Diagnostics enabled.

- 1) Select Help > Diagnostics > Examine.
- 2) The username of the DFF appears in the Value field.
- 3) Select the DFF name from the list of values in the "Field" field.
- 4) Select the "\$DESCRIPTIVE_FLEXFIELD\$" value for the Block name.

- A. 1, 2, 3, 4
- B. 1, 4, 3, 2
- C. 1, 3, 4, 2
- D. 4, 3, 1, 2

Correct Answer: B

QUESTION 21

A Global Single Instance (GSI) provides the global enterprise with a single, complete data model. Identify three features in Oracle E-Business Suite Release 12 that support a GSI. (Choose three.)

- A. maintenance of third-party applications
- B. automation of standardized documents and audit processes
- C. decentralization of operations by regions, divisions, or processes
- D. consolidation of data centers and lowering administrative overhead
- E. capture of statutory and customary local requirements in the same database

Correct Answer: BDE

QUESTION 22

Identify the component in Subledger Accounting that enables you to meet the requirements of multiple accounting representations for an event.

- A. Event Definition
- B. Event Classification
- C. Subledger Accounting Method
- D. Application Accounting Definition

Correct Answer: D

QUESTION 23

Oracle Fusion Intelligence Release 12 is a set of new Application products and one of the first of the Fusion Applications. Select four features that Oracle Fusion Intelligence Release 12 provides. (Choose four.)

- A. guided drilldown
- B. integrated security
- C. workflow notifications
- D. guided navigation and action links
- E. extends and configures Key Performance Indicators

Correct Answer: ABDE

QUESTION 24

Which two parameters facilitate cross organization reports in a Multi-Org environment? (Choose two.)

- A. Ledger
- B. Legal Entity
- C. Operating Unit
- D. Reporting Level
- E. Reporting Context

Correct Answer: DE

QUESTION 25

ABC Corp. has implemented Oracle Manufacturing applications from Oracle E-Business Suite Release 12. How is the data in the manufacturing applications partitioned?

- A. by Application
- B. by Legal Entity
- C. by Operating Unit
- D. by Business Group
- E. by Inventory Organization

Correct Answer: E

QUESTION 26

You receive a request to create a new responsibility for US Payables Manager. The request states that the new responsibility should have access to all menu items except Invoice Payments. Identify two options that you would use to restrict the Invoice Payments option on the new US Payables Manager responsibility. (Choose two.)

- A. Remove the request group from the new US Payables Manager responsibility.
- B. Create a Menu Exclusion for Invoice Payments on the US Payables Manager responsibility.
- C. Create an Item Exclusion for Invoice Payments on the US Payables Manager responsibility.
- D. Create a Security Attribute for Invoice Payments on the US Payables Manager responsibility.
- E. Create a new menu excluding the Invoice Payments option and attach the new menu to the responsibility.

Correct Answer: BE

QUESTION 27

What are the three elements involved in submitting a concurrent request? (Choose three.)

- A. selecting Operating Unit
- B. selecting report language
- C. providing completion option
- D. defining a submission schedule
- E. selecting the request or request set to be submitted

Correct Answer: CDE

QUESTION 28

XYZ Corp. has acquired ABC Corp. XYZ operates with Multi-Org Access Control. Consequently XYZ Corp. needs to add additional Operating Units. Identify the statement that describes the sequence for adding additional Operating Units.

- A. It is not possible to add additional Operating Units.
- B. Set the MO: Operating Unit profile option, run the Replicate Seed Data concurrent request, create the Operating Unit, and create new responsibilities as necessary.

- C. Set the MO: Security Profile profile option, run the Replicate Seed Data concurrent request, create the Operating Unit, and create new responsibilities as necessary.
- D. Create the Operating Unit, run the Replicate Seed Data concurrent request, create new responsibilities as necessary, and set up the MO: Default Operating Unit profile option.
- E. Create the Operating Unit, run the Replicate Seed Data concurrent request, assign the Operating Unit to a security hierarchy, run Security List maintenance concurrent program, create new responsibilities as necessary, and set up the MO: Security Profile profile option.

Correct Answer: E

QUESTION 29

A new Receivables Inquiry responsibility is created for the Denmark Operating Unit and is assigned to the end users. You receive a call from the end user, who states that the Sweden Receivables data is displayed on the Denmark Receivables Inquiry screen. What is the cause of the wrong data being displayed?

- A. incorrect exclusions on the responsibility
- B. incorrect menu added to the responsibility
- C. incorrect Data Group added to the responsibility
- D. incorrect Request Group added to the responsibility
- E. incorrect Operating Unit Profile Option set for the responsibility

Correct Answer: E

QUESTION 30

Application Security consists of User, Responsibility, and Self-Service Application Security. Select three authorizations to which a responsibility allows access. (Choose three.)

- A. Ledger
- B. Legal Entity
- C. Business Groups
- D. a specific application or applications
- E. a restricted list of windows, functions, and reports

Correct Answer: ADE

QUESTION 31

You have logged in to the Oracle E-Business Suite Release 12 instance and accessed your worklist. You see four FYI notifications in your default Worklist view. You opened the first notification and clicked the "OK" button after reviewing the content. Identify three things that can happen after you return to your worklist. (Choose three.)

- A. You see four notifications in your worklist.
- B. You see three notifications in your worklist.
- C. Status of the first notification has been updated to "Delete."
- D. Status of the first notification has been updated to "Closed."
- E. You can view the first notification by choosing the "All Notifications" view from your worklist.
- F. You can view the first notification by choosing the "FYI Notifications" view from your worklist.

Correct Answer: BDE

QUESTION 32

Identify two features related to parameters in a Daily Business Intelligence report. (Choose two.)

- A. Parameters are based on responsibilities.
- B. Each page in a report contains common parameters.
- C. Parameters can be defined for individual regions of a report.
- D. Multiple primary dimension parameters can be associated with a page in a report.

E. The primary dimension parameter is different for each page in a Daily Business Intelligence report.

Correct Answer: BE

QUESTION 33

John has set up a Context to capture additional information on the Invoice Lines DFF in Oracle Payables. He used Attributes 5, 6, 7, and 9 for this Context. Now he wants to capture additional information using global segments in the same DFF. Select two Attributes that John can use to set up "Global Data Element" segments. (Choose two.)

- A. 5
- B. 6
- C. 7
- D. 8
- E. 9
- F. 10

Correct Answer: DF

QUESTION 34

You are working on an implementation of Oracle Daily Business Intelligence Release 12 at ABC Corp.

Your client has three requirements:

1. Ability to export to Excel or PDF daily intelligence data
2. Ability to delegate roles to subordinates
3. Ability to summarize data using flexible time periods

Select the Daily Business Intelligence product that you would recommend to your client.

- A. Oracle Fusion Intelligence
- B. Oracle Financials Intelligence
- C. Oracle Purchasing Intelligence
- D. Oracle Interaction Center Intelligence
- E. Oracle Human Resources Intelligence

Correct Answer: A

QUESTION 35

Company ABC added a new responsibility to an existing Oracle E-Business Suite Release 12 application. The System Administrator sets the MO: Operating Unit profile option at the Application level. The Application level will override the _____ level.

- A. Site
- B. Responsibility
- C. User and Responsibility
- D. User, Responsibility, and Site

Correct Answer: A

QUESTION 36

Identify three correct statements about the Operating Unit in a Multi-Org model of Oracle E-Business Suite Release 12. (Choose three.)

- A. It is the highest level in the Multi-Org structure.
- B. It is an organization type that secures transaction data.
- C. An Operating Unit can be assigned to multiple Legal Entities.
- D. An Operating Unit can be associated with a single Legal Entity.

E. Multiple Operating Units can be assigned to a single responsibility.

Correct Answer: BDE

QUESTION 37

An activity in a workflow process can be a _____.

- A. notification or a subprocess, but not a PL/SQL function
- B. subprocess or a PL/SQL function, but not a notification
- C. PL/SQL function or a notification, but not a subprocess
- D. PL/SQL function, a notification, a subprocess, or a business event
- E. PL/SQL function, a subprocess, or a business event, but not a notification

Correct Answer: D

QUESTION 38

Identify two features of the Notification System in Oracle Workflow. (Choose two.)

- A. executes workflow rules and functions
- B. enables any user with access to the Internet to be included in a workflow process
- C. notifies the loading of a workflow process definition file from a flat file to a database
- D. leverages Oracle Advanced Queuing to enable business events to communicate across systems
- E. provides access to the worklist from Oracle E-Business Suite Release 12 through the worklist web pages

Correct Answer: BE

QUESTION 39

Which five options are available when scheduling a Periodic concurrent request in Oracle E-Business Suite Release 12? (Choose five.)

- A. Day(s)
- B. Year(s)
- C. Hour(s)
- D. Week(s)
- E. Month(s)
- F. Minute(s)
- G. Second(s)

Correct Answer: ACDEF

QUESTION 40

ABC Corp. has a number of service calls that require a resource to be designated. Using the CRM Application Foundation module, identify the component that helps ABC Corp. designate resources that will own and work on the task.

- A. Task Manager
- B. Resource Manager
- C. Escalation Manager
- D. Assignment Manager

Correct Answer: D

QUESTION 41

Select three features that Multi-Org provides to satisfy business needs. (Choose three.)

- A. secures user access to data

- B. supports fixed asset management
- C. procures from one Legal Entity and receives in another
- D. supports multiple language installations of Oracle Applications
- E. supports any number of business units within a single installation

Correct Answer: ACE

QUESTION 42

Identify three true statements regarding Multiple Organization reporting. (Choose three.)

- A. Cross Organization reports and multiple Organization reports are the same.
- B. Cross Organization reports can be submitted for a Reporting Level of Ledger.
- C. Multiple Organization reports can be submitted for a Reporting Level of Ledger.
- D. Multiple Organization reports produce outputs for different Operating Units one at a time from a single responsibility.
- E. Cross Organization reports produce outputs across different Operating Units in a single report from a single responsibility.
- F. Multiple Organization reports produce outputs for different Operating Units in a single report output from a single responsibility.

Correct Answer: BDE

QUESTION 43

A Ledger is a financial reporting entity. What is new in Oracle E-Business Suite Release 12 that facilitates generation of accounting entries?

- A. Ledger
- B. Chart of Accounts
- C. Multi-Org Structure
- D. Accounting Convention
- E. Financial Accounting Calendar

Correct Answer: D

QUESTION 44

Which two statements are true regarding partitioning of data by an application? (Choose two.)

- A. General Ledger is partitioned by Ledgers.
- B. Accounts Payable is partitioned by Ledgers.
- C. Fixed Assets are partitioned by Operating Unit.
- D. Accounts Receivable is partitioned by Operating Unit.
- E. Order Management is partitioned by Inventory Organization.

Correct Answer: AD

QUESTION 45

You have received a workflow notification from the Oracle E-Business Suite Release 12 instance, which requires an electronic signature in your response. Identify the true statement regarding your notification response.

- A. You can reply to the email notification by attaching your electronic signature.
- B. You can reply to the email by providing your login password to Oracle E-Business Suite Release 12.
- C. You can submit your response from any of your worklists after logging in to the Oracle E-Business Suite Release 12 instance.
- D. You can submit your response only from your personal worklist after logging in to the Oracle E-Business Suite Release 12 instance.

Correct Answer: C

QUESTION 46

Identify three features of Multi-Org. (Choose three.)

- A. The data can be logically partitioned.
- B. Users can be assigned to specific organizations.
- C. It defines organizations and the relationships between them.
- D. Multiple installations of Oracle Applications products are needed.
- E. It enables at most two business units to use a single installation of Oracle Applications.

Correct Answer: ABC

QUESTION 47

Identify two business benefits of using Multi-Org Access Control. (Choose two.)

- A. easier assignment of security rules
- B. reporting across Operating Units using single responsibility
- C. inquiry-only access to data across different Operating Units
- D. transaction entry across Operating Units using one responsibility
- E. transaction entry across Operating Units using multiple responsibilities

Correct Answer: CD

QUESTION 48

ABC Corporation has set up the Accounting Key Flexfield. It has also set up a Descriptive Flexfield to store vehicle information associated with the asset category "Vehicle." Identify three correct statements. (Choose three.)

- A. The Descriptive Flexfield is called an "intelligent key structure."
- B. The Descriptive Flexfield for the asset category "Vehicle" captures only additional information.
- C. The Descriptive Flexfield for the asset category "Vehicle" appears as a normal field on a form.
- D. The combination of values in the Accounting Flexfield identifies a particular business entity or class of entities.
- E. You can define cross-validation rules to control the allowable combinations of segment values for the Accounting Flexfield.

Correct Answer: BDE

QUESTION 49

What are the three characteristics of an application and Oracle ID when defining a Data Group? (Choose three.)

- A. An application can be listed only once in a Data Group.
- B. An Oracle ID can be paired with more than one application.
- C. An application can be listed more than once in a Data Group.
- D. Custom applications registered with Oracle Applications can be included in a Data Group.
- E. Custom applications can be included in a Data Group and paired with an existing Oracle ID.

Correct Answer: ABD

QUESTION 50

Identify two features of a table-validated Value Set. (Choose two.)

- A. A table-validated Value Set has no list of approved values associated with it.
- B. Table-validated Value Sets obtain their lists of approved values from existing application tables.
- C. The values in a table-validated Value Set are stored in Oracle Application Object Library's tables.

- D. In a table-validated Value Set, you need to enter each value manually using the Segment values window.
- E. A table-validated Value Set enables you to use your own application tables as Value Sets for Flexfield Segments.

Correct Answer: BE

QUESTION 51

Identify three features of the Workflow Engine in Oracle Workflow Architecture. (Choose three.)

- A. resides in Oracle Database
- B. interacts with Advanced Queuing
- C. resides in Oracle Application Server
- D. interacts with Business Event System
- E. implements workflow process definitions at run time
- F. implements workflow process definitions at design time

Correct Answer: ADE

QUESTION 52

During the cutover phase of a project to implement Oracle E-Business Suite Release 12, you are responsible for converting historical account balances into Oracle General Ledger from a legacy system. There is no Account Code Combination setup in the Production Instance. Identify the setup in the Accounting Key Flexfield structure that is required to perform this conversion.

- A. Define Value Sets and assign them to Segments.
- B. Define Segments in the Accounting Flexfield structure.
- C. Qualify one of the Segments as the Balancing Segment.
- D. The Key Flexfield Segments have to be enabled and displayed.
- E. Select the "Allow Dynamic Inserts" check box in the Accounting Key Flexfield structure.

Correct Answer: E

QUESTION 53

You are the Human Resources lead for the ERP implementation of ABC Corporation. You have defined the employees in Oracle Human Resources. Select three activities that utilize the employee record. (Choose three.)

- A. Approvals
- B. Asset assignment
- C. Organization creation
- D. Journal Entry creation
- E. AutoCreate Purchase Orders

Correct Answer: ABE

QUESTION 54

Which two statements are correct regarding a table-validated Value Set? (Choose two.)

- A. A table-validated Value Set does not provide a predefined list of values.
- B. You use a table-validated Value Set when you have a set of values that is already maintained in an application table.
- C. You cannot define a table that you want to use when defining the table-validated Value Set.
- D. You can use a SQL query to retrieve all the approved values from the table when defining the table-validated Value Set.

Correct Answer: BD

QUESTION 55

Which two statements explain the role of the Desktop Tier in Oracle E-Business Suite Release 12? (Choose two.)

- A. It displays the Oracle E-Business Suite Release 12 Swan user interface.
- B. It manages communication between the middle tier and the database tier.
- C. It is responsible for forms displayed using Java (forms-based access) or HTML JavaScript.
- D. It hosts various servers and service groups that process business logic for Oracle Applications.
- E. It is responsible for storing and executing most of the business logic associated with Oracle E-Business Suite Release 12.

Correct Answer: AC

QUESTION 56

Identify four components of the Fusion Business Intelligence Embedded Dashboard. (Choose four.)

- A. real-time chat link
- B. multiple currencies
- C. flexible time periods
- D. multiple data widgets
- E. Web conferencing link
- F. Key Performance Indicators

Correct Answer: BCDF

QUESTION 57

You are the project manager with access to the Oracle Project Management application in Oracle E-Business Suite Release 12. You have granted User X access to your worklist. User X now logs in to Oracle E-Business Suite Release 12 and accesses his or her worklist by clicking the Workflow Notifications link. Identify three actions User X can perform. (Choose three.)

- A. Create vacation rules for you.
- B. Approve projects on your behalf.
- C. Grant access to your worklist to another user.
- D. View the username of the worklist owner in the worklist.
- E. Access your worklist automatically without performing any action.
- F. Access your worklist by clicking the "Switch User" button, and then selecting your name.

Correct Answer: BDF

QUESTION 58

Which three statements are true about Oracle Workflow and Oracle Alerts? (Choose three.)

- A. Alerts can perform only one action.
- B. Workflow can support complex conditional logic.
- C. Alerts can be configured for any frequency of occurrence.
- D. Workflows can wait for a user response during an activity.
- E. Alerts can perform multiple actions in a sequence that you specify.
- F. Alerts run only when a database record is either updated or created.

Correct Answer: BDE

QUESTION 59

Company ABC has requested you to define a custom application to support custom forms and reports. The DBAs have created a new CUSTOM_TOP directory. Which are the three mandatory fields required to define a new custom application? (Choose three.)

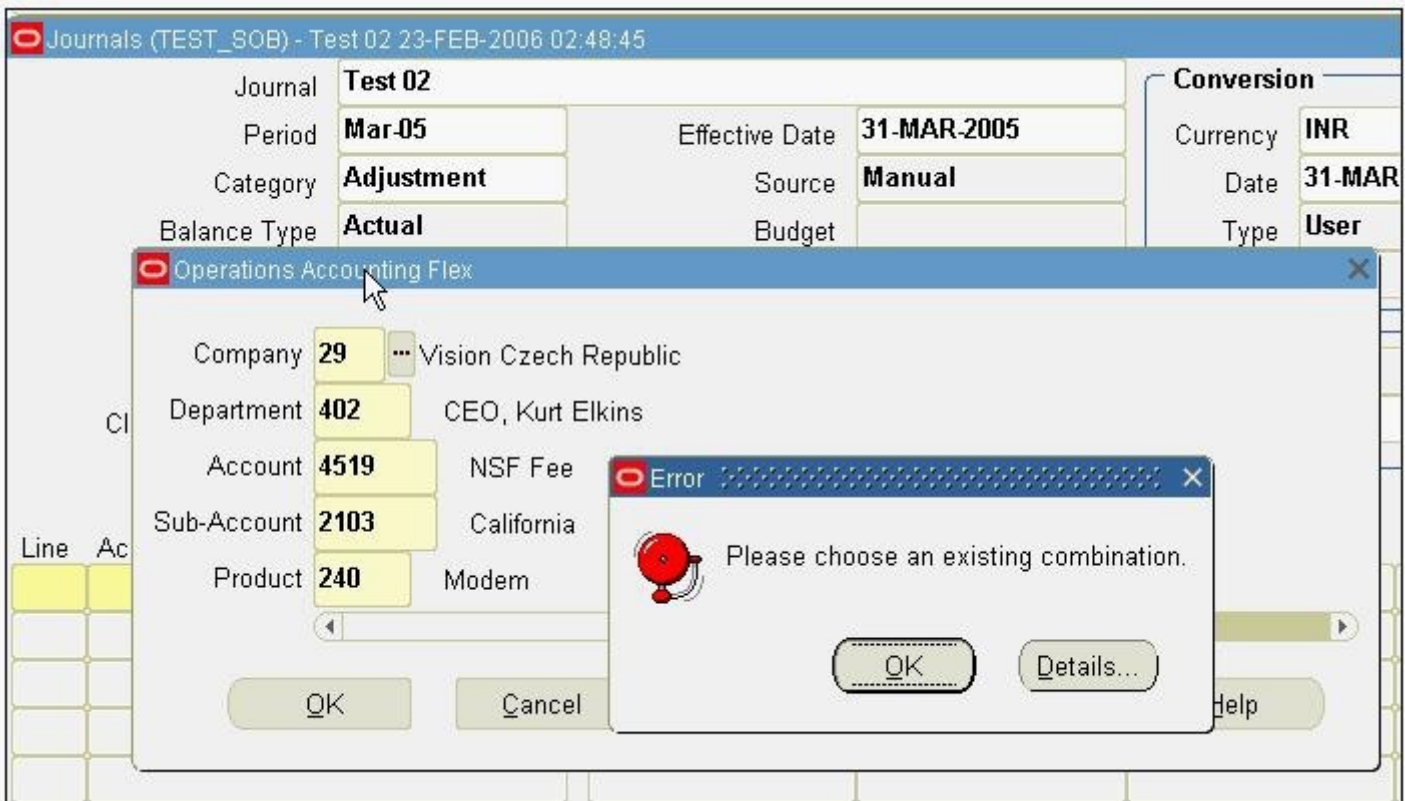
- A. Base path
- B. Application
- C. Description
- D. Short Name
- E. Responsibility

Correct Answer: ABD

QUESTION 60

View the Exhibit. While entering a journal in the Journals form, you enter a code combination of 29.402.4519.2103.240 in the five-segment Accounting Flexfield. However, you are unable to proceed after entering this account combination.

What could be the problem in the structure definition of the Accounting Flexfield?



- A. The "Freeze Rollup Groups" check box is selected.
- B. The "Allow Dynamic Inserts" check box is deselected.
- C. The "Freeze Flexfield Definition" check box is selected.
- D. The "Cross-Validate Segments" check box is selected.

Correct Answer: B

QUESTION 61

Oracle Daily Business Intelligence functions are secured using standard Oracle Applications function security. Choose three dashboards that are secured by the Inventory Organization. (Choose three.)

- A. Inventory Management
- B. Warehouse Management
- C. Procurement Management
- D. Commodity Supplier Management
- E. Customer Fulfillment Management

Correct Answer: ABE

QUESTION 62

Identify three Fusion Business Intelligence products for Oracle E-Business Suite Release 12. (Choose three.)

- A. Oracle CRM Analytics
- B. Oracle Sales Analytics
- C. Oracle Treasury Analytics
- D. Oracle Financial Analytics
- E. Oracle Commodity Analytics
- F. Oracle Supply Chain Analytics

Correct Answer: BDF

QUESTION 63

Embedded Dashboards are a feature of Oracle Fusion Business Intelligence Release 12. Select three additional features that Embedded Dashboards provide. (Choose three.)

- A. multiple currencies
- B. flexible time periods
- C. use of workflow notifications
- D. ability to export to Excel or PDF
- E. ability to create/import transactions

Correct Answer: ABD

QUESTION 64

If the user has to set Multi-Org preferences, the System Administrator has to assign _____.

- A. the User Preferences function to the responsibility
- B. the Multi-Org preferences menu to the responsibility
- C. the User Preferences menu item to the responsibility
- D. the Multi-Org preferences function to the responsibility

Correct Answer: A

QUESTION 65

Which two statements are true regarding ownership of shared entities? (Choose two.)

- A. Items is owned by Oracle Purchasing, whereas Locations is owned by Oracle Receivables.
- B. Suppliers is owned by Oracle Purchasing, whereas Units of Measure is owned by Oracle Inventory.
- C. Ledger is owned by Oracle General Ledger, whereas Locations is owned by Oracle Human Resources.
- D. Customers is owned by Oracle Human Resources, whereas Locations is owned by Oracle Receivables.
- E. Sales Force is owned by Oracle Order Management, whereas Employees is owned by Oracle Human Resources.

Correct Answer: BC

QUESTION 66

It is your first day at a client site to implement Oracle E-Business Suite Release 12. The client wants you to log a Service Request using MetaLink, regarding a problem with the Invoice Workbench form in Oracle Payables. Identify the key information that is required to initiate a Service Request for this client.

- A. Error Message Number
- B. Brief Problem Statement

- C. Customer Support Identifier
- D. Oracle Payables Patch Set level
- E. Version of the Invoice Workbench form

Correct Answer: C

QUESTION 67

You are involved in a project to upgrade to Oracle E-Business Suite, Release 12. You need more information about the upgrade processes and paths. Where would you find the upgrade guide for Oracle E-Business Suite?

- A. AppsNet
- B. Bug Database
- C. Technical Forums
- D. MetaLink Knowledge Base
- E. Oracle Technology Network
- F. Customer Knowledge Exchange

Correct Answer: D

QUESTION 68

As a system administrator for Oracle E-Business Suite Release 12, which two actions can you perform on user passwords? (Choose two.)

- A. Set the initial password.
- B. Change an existing password.
- C. See the password that was chosen by the user.
- D. Set varying minimum lengths of passwords for different users.

Correct Answer: AB

QUESTION 69

Identify two correct statements related to Key Performance Indicators and the KPI region in Daily Business Intelligence. (Choose two.)

- A. can be of table format only
- B. can be configured for each dashboard
- C. organizes data into reporting hierarchies
- D. is a strategic business factor that is used for reporting
- E. contains a unique set of graphical information on a dashboard

Correct Answer: BD

QUESTION 70

Identify two types of regions in Daily Business Intelligence. (Choose two.)

- A. menu
- B. table
- C. folder
- D. report
- E. graph

Correct Answer: BE

QUESTION 71

Identify the two benefits of using Multi-Org Access Control. (Choose two.)

To Read the [Whole Q&As](#), please purchase the [Complete Version](#) from [Our website](#).

Trying our product !


- ★ **100%** Guaranteed Success
- ★ **100%** Money Back Guarantee
- ★ **365 Days** Free Update
- ★ **Instant Download** After Purchase
- ★ **24x7** Customer Support
- ★ Average **99.9%** Success Rate
- ★ More than **69,000** Satisfied Customers Worldwide
- ★ Multi-Platform capabilities - **Windows, Mac, Android, iPhone, iPod, iPad, Kindle**

Need Help

Please provide as much detail as possible so we can best assist you.

To update a previously submitted ticket:



 One Year Free Update <p>Free update is available within One Year after your purchase. After One Year, you will get 50% discounts for updating. And we are proud to boast a 24/7 efficient Customer Support system via Email.</p>	 Money Back Guarantee <p>To ensure that you are spending on quality products, we provide 100% money back guarantee for 30 days from the date of purchase.</p>	 Security & Privacy <p>We respect customer privacy. We use McAfee's security service to provide you with utmost security for your personal information & peace of mind.</p>
---	---	--

[Guarantee & Policy](#) | [Privacy & Policy](#) | [Terms & Conditions](#)

Any charges made through this site will appear as Global Simulators Limited.

All trademarks are the property of their respective owners.

Copyright © 2004-2015, All Rights Reserved.