

Exam : **1Z0-151**

Title : Oracle Fusion Middleware
11g: Build Applications with
Oracle Forms

Version : Demo

1. The Credit_Rating item in the Customers block of an Order Entry form must be restricted to three possible values: Good, Poor, or Null (the latter value indicates that the credit rating has not been determined). Order entry clerks must be able to update this item to any of the preceding three values. You want to change the item to a check box labeled "Credit Risk" that should be selected if the customer has poor credit, the check box should not be selected if the customer's credit rating is good or undetermined.

Label	Credit Risk
Access Key	
Implementation Class	
Value when Checked	Bad
Value when Unchecked	Good
Check Box Mapping of Other Values	Unchecked
Popup Menu	<Null>
Navigation	
Keyboard Navigable	Yes
Mouse Navigate	Yes
Previous Navigation Item	<Null>
Next Navigation Item	<Null>
Data	
Data Type	Char
Data Length Semantics	BYTE
Maximum Length	4
Initial Value	

You change the item type to Checkbox, set other properties as shown in the Exhibit, and then run your form and insert three records: two with good credit and the check box deselected, and one with poor credit and the check box selected. You commit the data and query the records, with the following result set: The first two records show an undetermined credit rating, although your intention was to set the value to Good for these customers.

What change must you make in the properties of the Credit_Rating item to enable values of Good, Poor, and Null to be entered?

CUST_ID	FIRST_NAME	LAST_NAME	CREDIT_RATING
10001	Gamer	Pam	
10002	Wallace	Sheila	
10003	Maslen	Glenn	Poor

- A. Change the initial Value property to Good.
- B. Change the Check Box Mapping of Other Values property to Not Allowed.
- C. Change the initial Value property to Good and the Value When Unchecked property to Null.
- D. Change the initial Value property to Good and the Check Box Mapping of Other Values property to Null.

E. Change the initial Value property to Good and the Check Box Mapping of Other Values property to checked.

F. Change the item type. It is not appropriate to use a check box to enable entry and update of more than two values in an item.

Answer: E

2. When tabbing through items in the Employees form, users should not be able to navigate to the Salary text item. If they need to update the item, they will have to explicitly navigate to it by using the mouse.

Which property setting accomplishes this requirement.?

A. Enabled = Yes; Keyboard Navigable = No

B. Enabled = No; Keyboard Navigable = Yes

C. Enabled = Yes; Keyboard Navigable = Yes

D. Enabled = No; Keyboard Navigable = No

E. Automatic Skip = Yes

Answer: C

3. You have a text item in your form named Object1. You want to create Object2 as an exact duplicate of Object1. You want to be able to change the properties of Object2. However if you change Object1, you do not want Object2 to change.

Which method of reusing Object1 would be best for these requirements?

A. Copying Object1

B. Subclassing Object1

C. Creating a property class from Object1

D. Putting Object1 in an Object library

E. Referencing Object1 in a PL/SQL library

Answer: A

4. The Orders form has four blocks. The Orders and Order_items block are on the CV_Order content canvas; the inventories block items are on the CV_inventories content canvas; and Control block buttons are on the CV_Buttons toolbar canvas. All buttons have mouse Navigate set to No.

The Order_Items block is a detail of Orders. The inventories block is a detail of Order_Items, showing the stock of the selected product.

There is a button in the Control block with a When-Button-Pressed trigger:

```
IF GET_CANVAS_PROPERTY(:SYSTEM.cursor_item, item_canvas) = 'CV_ORDER' THEN
GO_BLOCK ('inventories')
ELSE
GO_BLOCK ('orders');
END IF;
```

When you run the form and click the button, navigation does not occur, and the form displays the runtime error "FRM-41053: Cannot find Canvas: invalid ID."

What should you do to correct this problem?

A. Change the sequence of blocks in the Object Navigator

- B. Change the Mouse Navigator property of the button to yes
- C. in the first line of code, change the built-in GET_ITEM_PROPERTY
- D. in the first line of code, change the system variable to: SYSTEM.CURSOR_CANVAS.
- E. in the first line of code, change the CV_ORDER to lowercase
- F. Change the argument to the GO_BLOCK built-in to uppercase

Answer: D

5. Which four types of variables must have their names preceded by a colon when they are referenced in trigger code?

- A. PL/SQL variables
- B. Form items
- C. global variables
- D. system variables
- E. parameters

Answer: A,B,C,D

6. The Order Entry application contains several forms. The inventories form uses an LOV that is based on a record group that queries the Warehouses table to return a warehouse ID.

Several of the forms use LOVs that are based on the same query. You decide to centralize the creation of the record group to the entry form of the application, which opens all the other forms, for example, to open the inventories form, there is a When-Button Pressed trigger on the inventories button with the following code;

```
OPEN_FORM ('inventories');
```

in a When-New-Form-instance trigger for the entry form, you create the warehouse_rg record group by using the CREATE_GROUP_QUERY built-in with the following arguments:

```
('warehouse_rg', 'SELECT ALL WAREHOUSE.WAREHOUSE_ID, WAREHOUSE.WAREHOUSE_NAME FROM WAREHOUSE order by warehouse_name');
```

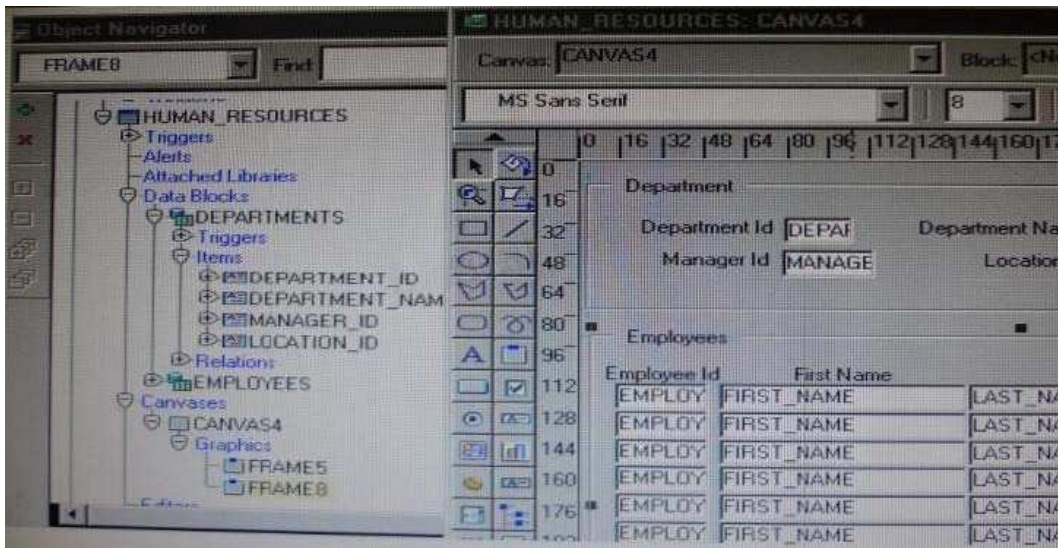
You also populate the record group in this trigger.

What must you do to make this record group available to the inventories form and the other forms?

- A. in the When-New-Form-instance trigger for the entry form, add a value for the SCOPE argument of CREATE_GROUP_QUERY.
- B. in the entry form, move the record group code to the end of the When-Button-Pressed triggers for the buttons that open other forms, so that the record group is created and populated immediately after OPEN_FORM is called.
- C. in the entry form, move the record group code to the beginning of the When-Button-Pressed triggers for the buttons that open other forms, so that the record group is created and populated just before OPEN_FORM is called.
- D. in the When-Button_Pressed triggers of the entry form from the buttons that open other forms, add a value for the SESSION argument of OPEN_FORM.
- E. in the other forms, refer to the record group as: global.warehouse_rg.

Answer: A

7. View the Exhibit.



In the Human Resources form shown in the Exhibit, you want to modify the prompts, heights, and widths of the Department Id, Manager Id, and Location Id Holds in the Departments data block.

What must you select before invoking the Layout Wizard in reentrant mode to modify these item properties?

- A. Frame5
- B. Frames
- C. Canvas4
- D. the Departments block
- E. the DEPARTMENT_ID, MANAGER_ID and LOCATION_ID items

Answer: C

8. You are implementing a JavaBean in a form, the bean has no visible component on the form when invoked, the bean displays an input text where users enter a zip code, the bean has a single method that returns a short weather forecast for that zip code as a character value.

How can you retrieve that value so that you can display it to the user?

- A. Use FBEAN.ENABLE_EVENT to register a listener for the bean event. Obtain the value of SYSTEM.CUSTOM_ITEM_EVENT in a When-Custom item Event trigger, and then use that value as an argument to the MESSAGE builtin.
- B. Use FBEAN.REGISTER_BEAN as an argument to the MESSAGE builtin to invoke the bean's method and return the value as a message displayed to the user.
- C. Use FBEAN.REGISTER_BEAN to register the bean, so that when the user enters a zip code into the bean's input text, the value is automatically displayed in the bean area item.
- D. Use FBEAN.ENABLE_EVENT to register a listener for the bean event. Obtain the value of SYSTEM.CUSTOM_EVENT_PARAMETER in a When-Custom-item-Event trigger, and then use that value as an argument to the MESSAGE builtin.

Answer: D

9. The Orders database table uses Order_id as its primary key. You have written the following code to use in the Orders block of a form:

```
SELECT orders_seq.NEXTVAL
```

```
INTO :orders.order_id
```

```
FROM SYS.dual;
```

Which statement is true about this code?

- A. If you place this code in a trigger that fires when the record is inserted into the database, you will likely have more gaps in Order IDs than if you use the sequence as a default value for the item.
- B. If you place this code in a trigger, you should ensure that Order_Id has its required property set to Yes.
- C. If you place this code in a trigger, you should ensure that Order_Id has its Database Item property set to No.
- D. If the named sequence does not exist, it is automatically created the first time the code is called.
- E. You should place this code in a database trigger to minimize the gaps in Order IDs.
- F. You should place this code in a Pre-insert trigger to minimize the gaps in Order IDs.
- G. You should place this code in a Post_insert trigger to minimize the gaps in Order IDs.

Answer: F

10. In Forms Builder, the iconic buttons on the form are blank, but when you click Run Form the form appears in the browser with images in the iconic buttons.

What are two things that you can check to track the source of this problem?

- A. forms Builder runtime preferences
- B. the UI_ICON setting in the operating system
- C. the iconpath setting in the Forms registry file
- D. the UI_ICOM_EXTENSION setting in the operating system
- E. the iconextension setting in the Forms registry file
- F. the FORMS_PATH setting in the Forms environment file
- G. the classpath setting in the operating system

Answer: B,C

11. You want to display employee records in tabular format, but the form is not wide enough to display all the items in the Employees block. The employee IDs and names of displayed records should always be visible, but you want to scroll the additional information as users tab through the items, the form should look like a spreadsheet with the first two columns frozen.

Which canvas types would be most appropriate in this scenario?

- A. content canvas in a window with a horizontal scroll bar
- B. content canvas and multiple tab canvases
- C. content canvas and a tab canvas with multiple tab pages
- D. content canvas and a stacked canvas with a horizontal scroll bar
- E. multiple content canvases

Answer: C

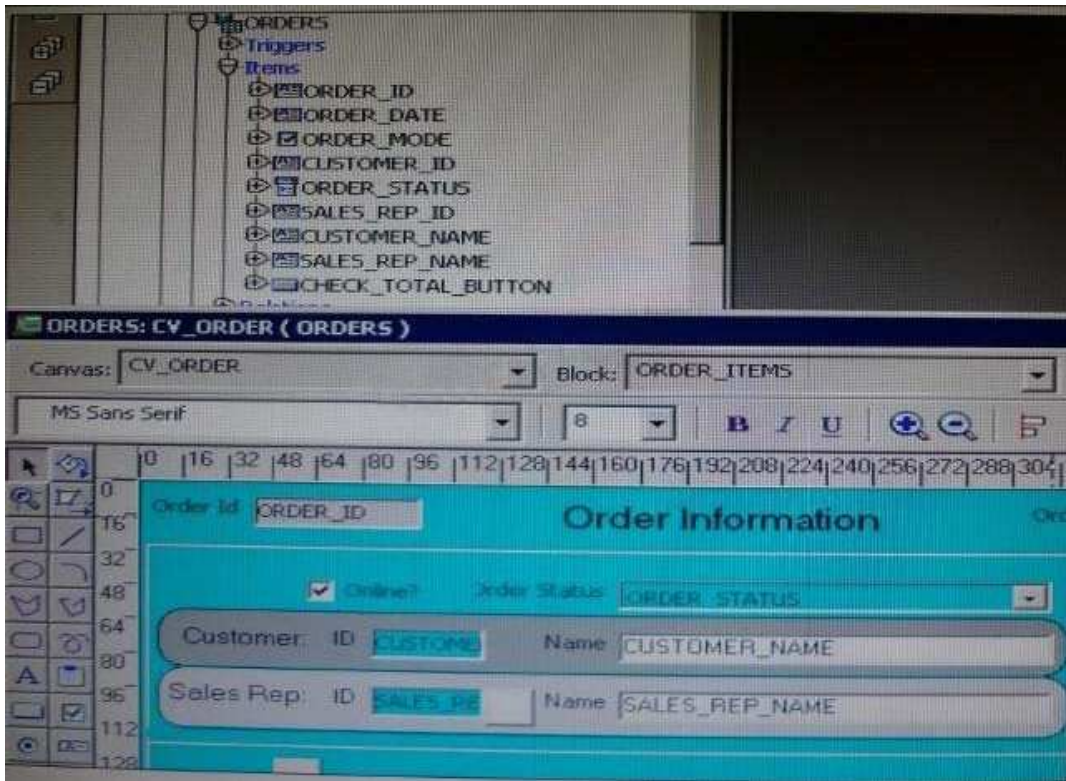
12. You have created a complex menu structure with several types of menu objects. To which objects would you assign menu commands?

- A. main menus
- B. individual menus
- C. submenus
- D. menu items

E. all of the above

Answer: E

13. View the Exhibit.



The Departments table in the database contains four columns. In a new form, you use the Data Block Wizard to add all columns to the block, but in the layout Wizard, you choose all columns except Location_Id to add to the canvas. The Object Navigator and layout Editor appear as shown in the Exhibit. You then decide that you do need to display Location_Id on the canvas.

What object must you select before invoking the Layout Editor in re-entrant mode to make this change?

- A. the text item tool in the Layout Editor
- B. Frame 16 in neither the Object Navigator or the layout Editor
- C. Canvas4 in neither the Object Navigator or the Layout Editor
- D. Location_Id in the Object Navigator
- E. the Departments data block in the Object Navigator

Answer: D

14. To avoid overloading the database during busy times, you decide to restrict the queries that are executed on the Orders form so that users query by either Order ID or Customer ID during these times. Which trigger is most appropriate for the code to enforce this restriction?

- A. When-New-Form-instance
- B. When-New-Block-instance
- C. On-Query
- D. Pre-Query
- E. Post-Query

Answer: D

15. You have created an editor named MyEditor, and you want it to be available to edit the text item Product_Description. You can associate the editor with the text item by setting the Editor property of Product_Description to MyEditor.

A. True B.

False

Answer: A

Trying our product !

- ★ **100%** Guaranteed Success
- ★ **100%** Money Back Guarantee
- ★ **365 Days** Free Update
- ★ **Instant Download** After Purchase
- ★ **24x7** Customer Support
- ★ Average **99.9%** Success Rate
- ★ More than **69,000** Satisfied Customers Worldwide
- ★ Multi-Platform capabilities - **Windows, Mac, Android, iPhone, iPod, iPad, Kindle**

Need Help

Please provide as much detail as possible so we can best assist you.

To update a previously submitted ticket:



 One Year Free Update <p>Free update is available within One Year after your purchase. After One Year, you will get 50% discounts for updating. And we are proud to boast a 24/7 efficient Customer Support system via Email.</p>	 Money Back Guarantee <p>To ensure that you are spending on quality products, we provide 100% money back guarantee for 30 days from the date of purchase.</p>	 Security & Privacy <p>We respect customer privacy. We use McAfee's security service to provide you with utmost security for your personal information & peace of mind.</p>
---	---	--

Guarantee & Policy | Privacy & Policy | Terms & Conditions

Any charges made through this site will appear as Global Simulators Limited.

All trademarks are the property of their respective owners.

Copyright © 2004-2014, All Rights Reserved.