

# 100% Money Back Guarantee

**Vendor:** Citrix

**Exam Code:** 1Y0-400

**Exam Name:** Designing Citrix XenDesktop 7 Solutions Exam

**Version:** Demo

## Testlet 1

### Soler Healthcare

#### Citrix Delivery Center Infrastructure Assessment

##### Executive Summary

Soler Healthcare is a global research university with hospitals and research facilities in locations around the world. Most divisions and branches of Soler Healthcare provide specialty services. For example, the New York branch is the home of the School of Cardiology and the Center for Cardiovascular Treatment Specialists who work at Soler Healthcare travel to the company's facilities in global locations to carry out their various medical, research and training duties. Soler Healthcare has 5,000 full time employees, with several hundred contractors. The majority of the full-time employees are engaged in various research and training activities. All employees at Soler Healthcare are currently required to work in an office location in order to have access to the organization's network and resources.

Management, doctors and other healthcare professionals, and some field staff regularly use laptops, tablets, and smartphones. Members of the field staff encounter difficulties on a regular basis keeping files synchronized between their mobile devices and their assigned workstations in their offices.

Soler Healthcare has no immediate plans for expansion; however the management at Soler Healthcare is exploring a range of information technology (IT) solutions that will enable the organization to be more productive, efficient, and agile. Improving the company's current desktop and application delivery strategy is a high priority for management. Optimizing their desktop and application delivery strategy will improve the way the IT team provisions and delivers desktops and applications to users, and in the long run, should the organization need to expand, a more robust and flexible solution will ensure that the infrastructure is scalable.

##### 1.1 Current Citrix Environment

Soler Healthcare does not have an existing Citrix Infrastructure. Soler Healthcare is interested in desktop virtualization. A desktop virtualization Proof-of-Concept (POC) environment was recently built for Soler Healthcare. After several demonstrations, management has decided to replace the current desktop and application delivery model with a Citrix virtualized infrastructure.

##### 1.2 Key Project Findings

After an onsite assessment of the Soler Healthcare infrastructure and a demonstration of the POC environment, the following statements indicate the status of Soler Healthcare's IT needs and plans:

The CIO of Soler Healthcare has been charged with the responsibility of using the upcoming desktop refresh window, during which all user office computer equipment will be evaluated and upgraded where necessary, to move to a virtualized desktop and application model. Soler Healthcare is interested in desktop and application virtualization to address several problems, including the following.

1. Providing secure remote access to select users who need to access their data from remote locations outside of the corporate network.
2. Reducing overall general IT and storage costs

##### 1.3 Next Steps

Following the infrastructure assessment of Soler Healthcare's IT environment, this report recommends that Soler Healthcare takes the following actions:

Replace the physical servers and desktops with virtual servers and desktops and update the Operating System platforms to Windows Server 2012 and Windows 8. Provide secure remote access from any device to users in the HR, Doctors, Management, IT, the Emergency Response and Offsite Contractors groups. Implement a virtualization infrastructure with shared storage to support a new virtual server and desktop infrastructure.

Integrate disaster recovery solutions into the new architecture.

##### Users

The Soler Healthcare environment consists of a diverse group of users. Call center staff use thin client devices to access corporate resources, while most of the other user groups access corporate resources from corporate-issued workstations and laptops. Over the last few years, users at Soler Healthcare have gradually begun to access corporate resources from tablet and smartphone devices.

Users are frustrated with the IT team difficulty rolling out new operating systems and applications, the lack of a remote access strategy, and the overall lack of flexibility in the environment. In both formal and informal settings, the CIO has presented the concept of virtualizing applications and desktops, and users have responded favorably. Thus, the management at Soler Healthcare has instructed the IT team to assess, design, and build a virtual desktop solution, creating appropriate solutions for employees based on their job requirements.

##### Client Devices

All Call Center employees access applications from thin-client terminals. These terminals are used to connect to a legacy mainframe environment using a terminal emulator. The legacy mainframe environment will be replaced with a Windows-based solution.

With the exception of the Call Center, the majority of the other users in the environment have laptops and desktops with single-core processors and 1GB of RAM on which they run Windows XP. Some have newer computers running Windows 7. Currently users' data is not backed up and the company does not have a disaster recovery strategy.

Some employees have handheld devices, such as tablets and smartphones. Tablets and smartphones are currently not officially supported by the IT department at Soler Healthcare; only "best effort" support is provided. Extending support to tablets and smartphones is being considered. Current breakdown of client devices at Soler Healthcare:

Device Type	# of Devices	Operating System	Browser	RAM
PC	3800	Windows XP	IE 7/8	1 GB
PC	1000	Windows 7	IE 8/9	4 GB
Thin Client	200	Linux	n/a	512 MB

##### Applications

The HR applications suite named PositivelyPeople is a front-end application that provides access to various modules, including payroll, time sheets, vacation requests, new hire procedures and information on former employees. The sensitive data in the PositivelyPeople application must be treated with strict confidentiality and must only be accessible to members of the HR user group. Distribution of the data must be prevented. The output of the modules can be in either Microsoft Word or Excel file format, or Adobe PDF; so these applications are currently co-located with PositivelyPeople on the HR users' desktops.

Installation of PositivelyPeople is performed manually based on a thoroughly documented process.

The Finance team, which consists of the billing and collections team, also accesses the main finance application named PositivelyFinance, from their desktops. PositivelyFinance is not available from devices outside of the Finance's team vLAN.

The application is only accessible to members of the Finance team. Users of the PositivelyFinance application should not be able to move or copy application data from the corporate network to any non-corporate issued devices or any devices that are not connected to the Finance's team vLAN. The vendor for PositivelyPeople and PositivelyFinance has tested and certified the applications to run on Windows Server 2012. The IT group at Soler Healthcare needs to ensure that these applications are always available.

Several months ago, Soler Healthcare sponsored a XenDesktop POC centered on mobilizing Windows applications for the Emergency Response Team. The POC focused on the Emergency Planning application named PositivelyResponse. The POC was considered successful.

Breakdown of all user groups and their application requirements:

User Group	Responsibilities	Application Requirements and Comments	Location	User Count
<b>Doctors</b>	<ul style="list-style-type: none"> <li>Review and update patient records in real time.</li> </ul>	<ul style="list-style-type: none"> <li>Primarily access to specialist medical applications specific to their area of work.</li> <li>Users work on a three-shift rotation, in which each of the three shifts covers 8 hours in a 24-hour period.</li> </ul>	<ul style="list-style-type: none"> <li>Based in each location</li> </ul>	700
<b>Nurses, Imaging and Radiology</b>	<ul style="list-style-type: none"> <li>Review and update patient records in real time.</li> <li>Complete daily reporting.</li> </ul>	<ul style="list-style-type: none"> <li>Most users are based in medical facilities and require rapid logon and application switching as they move from one location to another within the hospital.</li> <li>Users work on a three-shift rotation, in which each of the three shifts covers 8 hours in a 24-hour period.</li> </ul>	<ul style="list-style-type: none"> <li>Based in each location.</li> </ul>	2550
<b>Billing, Collections and management</b>	<ul style="list-style-type: none"> <li>Manage sales and financial information.</li> <li>Collect bills and make payments to vendors.</li> </ul>	<ul style="list-style-type: none"> <li>Users require access to the PositivelyFinance application. This includes the critical payroll application module.</li> <li>Individual print jobs may sometimes be very large.</li> </ul>	<ul style="list-style-type: none"> <li>Based in each location.</li> <li>Management team will require remote access.</li> </ul>	150
<b>Human Resources and Facilities</b>	<ul style="list-style-type: none"> <li>Assist with new employees and terminations as well as site building and asset management.</li> </ul>	<ul style="list-style-type: none"> <li>Users require access to a suite of sensitive HR applications known as PositivelyPeople in addition to general office applications. Printing security is a high concern.</li> </ul>	<ul style="list-style-type: none"> <li>Based in each location.</li> <li>Some members will require remote access capability in the new environment.</li> </ul>	150
<b>IT</b>	<ul style="list-style-type: none"> <li>Build and maintain the infrastructure.</li> <li>Support business operations and users.</li> </ul>	<ul style="list-style-type: none"> <li>Most users require access to all applications for administration purposes.</li> </ul>	<ul style="list-style-type: none"> <li>Based in the datacenter locations with remote access and full VPN access for on-call staff.</li> </ul>	100
<b>Research and Training</b>	<ul style="list-style-type: none"> <li>Manage research and training activities</li> </ul>	<ul style="list-style-type: none"> <li>Primary requirement is access to Microsoft Office suite of products and a few specialized applications and databases for research purposes</li> </ul>	<ul style="list-style-type: none"> <li>Based in each location</li> </ul>	1000

User Group	Responsibilities	Application Requirements and Comments	Location	User Count
<b>Emergency Response Team</b>	<ul style="list-style-type: none"> <li>Plan for emergencies and coordinate emergency response activities</li> </ul>	<ul style="list-style-type: none"> <li>Users require access to specialized applications for emergency management. Critical resources are email, PositivelyPeople, PositivelyResponse, and Microsoft Word, Excel, and Access.</li> </ul>	<ul style="list-style-type: none"> <li>Access is required from each site, an external nominated emergency control room and remotely through laptops/smartphones on a public wireless or mobile network.</li> </ul>	150
<b>Contractors</b>	<ul style="list-style-type: none"> <li>Perform various short-term tasks, most commonly with the nursing team. Others, such as cafeteria workers, perform tasks that do not require computers.</li> </ul>	<ul style="list-style-type: none"> <li>Requirements depend on assigned task; however, data security is the foremost concern.</li> <li>Those that do not require computers, do not need access to desktops or applications, just kiosk devices to clock in and out.</li> </ul>	<ul style="list-style-type: none"> <li>Most commonly but not always based out of each site</li> </ul>	650
<b>Call Center</b>	<ul style="list-style-type: none"> <li>Perform various tasks for departments such as call logging and scheduling</li> </ul>	<ul style="list-style-type: none"> <li>Users currently require access to the legacy mainframe but are being migrated to Windows-based solution.</li> </ul>	<ul style="list-style-type: none"> <li>Based out of each site</li> </ul>	200

#### Application Access

With the exception of Call Center users, all users currently access their required applications locally on their desktops or laptops. The recently conducted XenDesktop POC has increased interest in desktop virtualization. Members of the Management team who attended the demonstration are excited about the possibilities of having secure remote access to the corporate network, centralized management of applications, and a host of other features they like. The POC was successful and has gained the support of many of the decision makers at Soler Healthcare.

In the new environment, users in the HR, Doctors, Management, IT, the Emergency Response and Offsite Contractors groups should have remote access to their applications and/or desktops at all times including when at a Soler Healthcare facility or outside of one (over the Internet from other networks). All other users should have access to their applications and/or desktops only from the internal network. Access to email in particular should be available to all users regardless of their location (internally and externally),

#### Virtualized Desktops

Soler Healthcare is new to the concept of desktop visualization and has recently begun to explore the possibility of visualization applications, desktops, and server workloads. Soler Healthcare plans to move to a virtualized desktop and application model for users based on what is deemed most appropriate following the successful POC of XenDesktop in their environment. On Soler Healthcare's desktops and applications visualization wish list, management would also like for the IT team to implement high availability within the desktop and application solution.

#### Databases

SQL Server 2008 is currently implemented in the Soler Healthcare environment. A team of database administrators maintains the SQL database infrastructure. A full backup is performed on a nightly basis as part of the regular maintenance program. All databases are currently stored on a storage area network (SAN).

The backend database for the PositivelyPeople, PositivelyFinance and PositivelyResponse applications are also housed on this SQL Server 2008. Soler Healthcare is moving all databases to SQL Server 2008 R2 with the most recent service pack and patches based on robust new hardware and virtualized servers. The PositivelyFinance database needs to be transitioned to this new platform as soon as reasonably possible.

#### Windows Server and Active Directory

The Soler Healthcare server infrastructure is based on Windows 2008 R2 servers. Windows 2012 has been tested successfully for all applications, and Windows Server 2012 will be implemented as the server operating system platform in new virtual environment. The environment consists of a single forest which contains several domains, one for each country in which Soler Healthcare operates and maintains a facility. Each of these domains includes all of Soler Healthcare facilities in that country.

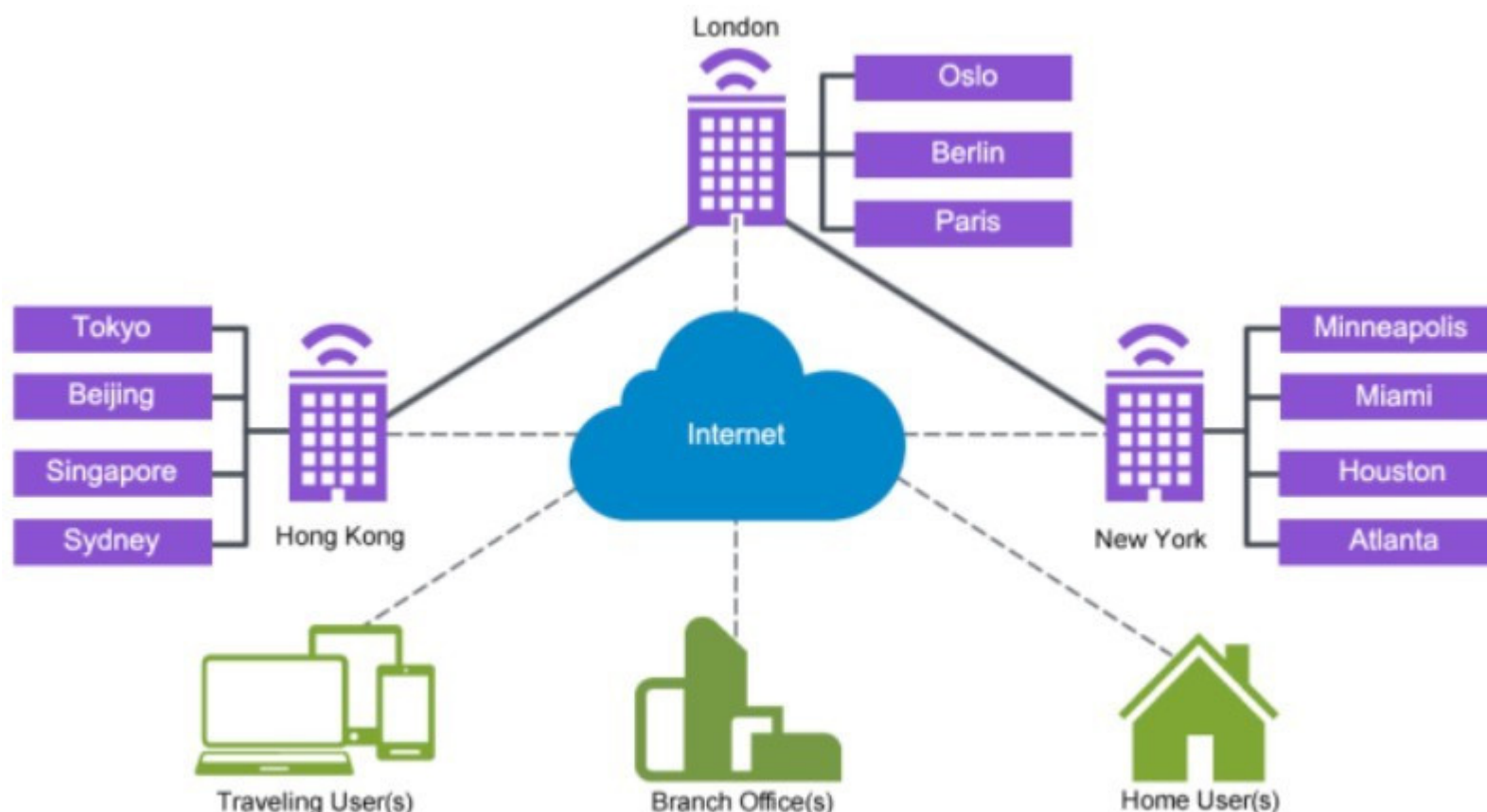
A Remote Desktop Services (RDS) License Server is hosted on a single domain controller within each domain, with 100 Client Access Licenses (CALs) on each RDS license server. The IT staff at Soler Healthcare built all of the servers and desktops in the current environment using a manual build process. Servers at Soler Healthcare have been in service for three years with no significant changes, so the process of building or rebuilding a server has not been a regular part of maintenance tasks. However the CIO is requiring an automated, easy-to-use server provisioning process be incorporated as part of the new IT infrastructure.

Logon scripts are not enabled for users as Soler Healthcare abandoned logon scripts last year in favor of Group Policy Objects. Soler Healthcare applies a minimal set of Group Policy Objects (GPOs) to domain-joined servers and workstations. Only one GPO, which configures Internet Explorer and Windows Update settings, is applied to domain-joined servers and workstations.

Roaming profiles were implemented previously, but they caused issues with one of the PositivelyFinance modules. Instead, local profiles are being used and administrators must manually delete the profiles when necessary. No Remote Desktop Services-specific home drives have been implemented, as they have been deemed unnecessary.

#### Network Architecture

The site layout of Soler Healthcare



### Site Layout

Soler Healthcare is a worldwide organization comprised of three data centers in New York London and Hong Kong with numerous regional hospitals connected by a private wide area network to their local datacenter. Additionally, users work from home and on the road Approximately 20% of all users work from home offices or travel part of the time. This is likely to increase significantly due to a new flexible working policy for administrative and managerial users. Because of this, reliability of remote access will be very important The CIO has emphasized that internal WAN traffic between sites must be kept to a minimum. As such, each user has a home" datacenter, to which he or she primarily connects; if there is a failure, virtualized desktops and applications should fail over to the secondary datacenter Based on this architecture, the datacenters are designed to support specific regions.

Data Center	Data Center Connections	Primary Region	Secondary Data center
<b>New York</b>	2 (London, Hong Kong)	Americas-East	London
<b>London</b>	2 (New York, Hong Kong)	European datacenter	New York
<b>Hong Kong</b>	2 (New York, London)	Asia-Pacific datacenter	London

### Enterprise Storage

User data is currently stored on an aging iSCSI SAN Soler Healthcare plans to roll out a new global storage solution for the three main datacenters, and the new storage solution will provide a total capacity of more than 1PB. Components of the solution will be physically located at the three datacenters. Initially, only about 200TB of space will be used at each data center, and a administrative project to delete obsolete and old files has been started.

Soler Healthcare plans to upgrade its storage solution in order to incorporate redundancy, high availability, and replication between the primary and backup datacenters, for each site.

### Server Hardware

Characteristics of all physical servers associated with the Soler Healthcare environment.

Component	Specification
Number of Processors	2
Processor Type	Intel Xeon 64-bit compatible
Processor Speed	1.5.0Ghz
Memory (GB)	4GB
Disk Capacity	5x36GB
Drive Interface Type	SCSI
RAID	RAID 5 with Hot Spare
Maximum NIC Speed	1000Mb/Full (set to Auto Duplex)
Management Software	IBM Director

Soler Healthcare is planning to purchase new hardware to support the planned virtualization environment. This capital expenditure has received preliminary budgeting approval; however, where feasible and reasonable, server virtualization should be incorporated in order to maximize the efficiency of datacenter operations.

### Security

Active Directory is used to authenticate users in the Soler Healthcare environment Due to the sensitive nature of the PositivelyFinance application, shadowing of this application should be prohibited. Shadowing of all other applications and desktops in the environment should only be allowed by Level-3 support personnel.

Anti-virus software is installed on each server and workstation, and it is automatically updated every hour.

In the future, the company will require two-factor authentication when accessing the environment remotely.

#### **Disaster Recovery**

The mobile workforce is not incorporated into the disaster recovery plan at present. As such, the mobile workforce must be included in any disaster recovery plan. The CIO has confirmed the use of the London datacenter for disaster recovery purposes.

#### **QUESTION 1**

Based on the assessment of the current company infrastructure, which design option is best for remote access?

- A. Deploy six NetScaler appliances: two in New York, two in Hong Kong, and two in London.
- B. Deploy three NetScaler appliances: one in each datacenter.
- C. Deploy two NetScaler appliances: one in London and one in New York.
- D. Deploy one pair of NetScaler appliances in the London failover datacenter.

**Correct Answer: B**

#### **QUESTION 2**

How can the architect implement high availability?

- A. Configure three high-availability pairs: one pair in New York, one pair in London, and one pair in Hong Kong.
- B. Configure three high-availability pairs: one pair between New York and London, one pair between New York and Hong Kong, and one pair between Hong Kong and London.
- C. Configure two high-availability pairs: one pair for New York and London, and one pair for London and Hong Kong.
- D. Configure one cluster instance containing all six appliances.]]>

**Correct Answer: A**

#### **QUESTION 3**

How should the architect recommend the NetScalers be implemented to increase site resiliency?

- A. Configure GSLB for user connectivity
- B. Create a cluster instance that includes all three appliances.
- C. Configure a backup vServer.
- D. Configure failover sites within the NetScaler.

**Correct Answer: A**

#### **QUESTION 4**

How should the architect configure the virtual servers on the two appliances?

- A. Create one virtual server for each appliance and on each appliance bind a session policy to its virtual server, which is configured in ICA Proxy mode using the datacenter StoreFront server.
- B. Create one virtual server for each appliance and on each appliance bind a redirection policy to its virtual server, which is configured in ICA redirection mode using the datacenter StoreFront server.
- C. Create two virtual servers for each appliance and on each appliance bind a redirection policy to the virtual server(s), which is configured in ICA redirection mode using the datacenter StoreFront server.
- D. Create four virtual servers for each appliance and on each appliance bind a session policy to the virtual servers, which are configured in ICA redirection mode using the datacenter StoreFront server.

**Correct Answer: C**

#### **QUESTION 5**

How should the architect configure the virtual servers on the appliance?

- A. Create one virtual server and bind it to a session policy that is configured in ICA Proxy mode using the datacenter StoreFront server.
- B. Create two virtual servers and bind them to a redirection policy that is configured in ICA Proxy mode using the datacenter StoreFront server.
- C. Create three virtual servers configured with the subnets of the three sites and bind them to redirection policies that are configured in ICA Proxy mode using the StoreFront server of that subnet.
- D. Create six virtual servers in high-availability pairs configured with the subnets of the three sites and bind them to redirection policies that are configured in ICA Proxy mode using the StoreFront server of that subnet.

**Correct Answer: A**

#### **QUESTION 6**

Why is this design the best remote access design for the environment?

- A. This design provides intra-site redundancy in case of appliance failures and connects users to their home datacenter while minimizing internal WAN traffic.
- B. This design provides redundancy in case of site failures and connects users to their home datacenter while optimizing external WAN traffic.
- C. This design protects against WAN failures and connects users to their home datacenter.
- D. This design will allow for the expected expansion of remote access usage and provides SSL VPN functionality for future needs.

**Correct Answer: A**

#### **QUESTION 7**

Why is this design the best remote access design for the environment?

- A. This design provides redundancy in case of appliance failures and minimizes internal WAN traffic.
- B. This design provides redundancy in case of site failures and optimizing external WAN traffic.
- C. This design protects against WAN failures.
- D. This design will allow for the expected expansion of remote access usage.

**Correct Answer: A**

#### **QUESTION 8**

Why is configuring GSLB the best remote access design for the environment?

- A. This design provides redundancy in case of site failures and connects users to their backup datacenter in case of primary site failure.
- B. This design provides redundancy in case of appliance failures and connects users to their home datacenter using external WAN traffic
- C. This design provides redundancy in case of appliance failures and connects users to their home datacenter using external WAN traffic
- D. This design will allow for the expected expansion of remote access usage and provides SSL VPN functionality for future needs.

**Correct Answer:** A

## Question Set 1

### QUESTION 1

Users must be able to connect remotely from their own mobile devices. What should the architect consider to increase the security of the current authentication solution?

- A. Adding a second authentication factor
- B. Placing domain controllers in the DMZ for remote users
- C. Shortening the Active Directory password expiration period
- D. Populating the RDS user profile path in the Active Directory user accounts

**Correct Answer:** D

### QUESTION 2

Which aspect of the new storage system's performance requirements is critical to the success of the project and should be determined before any purchase takes place?

- A. Whether it supports automatic tiering
- B. The number of SSD drives it will hold
- C. Whether 8Gb/s Fibre Channel or 10Gb/s Ethernet technology provides more storage bandwidth
- D. The number of IOPS it must support to host the required amount of pooled and dedicated virtual desktops

**Correct Answer:** A

### QUESTION 3

The architect needs to evaluate the options for replicating user profiles across all sites. Which two pieces of information should the architect collect to analyze the options? (Choose two.)

- A. WAN traffic
- B. License requirements
- C. Storage infrastructure
- D. Database configuration

**Correct Answer:** BD

### QUESTION 4

What are two potential risks in the existing environment that the architect must address in the proposed virtual solution? (Choose two.)

- A. Local profiles are used and administrators manually delete them when necessary.
- B. Installation of PositivelyPeople is performed manually based on a thoroughly documented process.
- C. No logon scripts are enabled for users because the company abandoned logon scripts last year in favor of GPOs.
- D. Users log on to the company environment based on Active Directory credentials, but the PositivelyFinance application requires secondary credentials.

**Correct Answer:** AB

### QUESTION 5

Which solution meets the criteria for reducing the general IT costs for the Research and Training user group to access their applications?

- A. VM Hosted applications
- B. Streamed server OS machines
- C. Dedicated desktop OS machines
- D. Pooled desktop OS machine with Personal vDisk

**Correct Answer:** B

### QUESTION 6

Scenario: Users from a remote research lab have very limited WAN bandwidth to their nearest datacenter. The users need to print over the WAN. What should an architect recommend to optimize printer bandwidth?

- A. Optimize WAN traffic through CloudBridge.
- B. Increase the WAN bandwidth through a WAN link upgrade.
- C. Restrict overall session bandwidth through a HDX bandwidth policy.
- D. Restrict printer redirection bandwidth through a HDX bandwidth policy.

**Correct Answer:** A

### QUESTION 7

The architect recommended pooled desktop OS machines with Personal vDisks for the Nurses, Imaging, and Radiology user group. How should an engineer implement antivirus software on these desktop OS machines?

- A. Install the antivirus software into the base image.
- B. Deploy the antivirus package as an App-V application.
- C. Deploy the antivirus software through a Group Policy startup script.
- D. Install the antivirus software in the master Personal vDisk as a user-installed application.

**Correct Answer:** A

### QUESTION 8

Which endpoint devices must be replaced to support the Streamed VHD method of desktop delivery?

- A. Windows 7
- B. Windows XP
- C. Linux thin clients
- D. PCs running Internet Explorer 7

**Correct Answer:** C



**QUESTION 9**

The company plans to reduce their storage requirement by using thin provisioning with XenServer hosts. Which storage option should the architect verify for capability in the current environment?

- A. NFS
- B. CIFS
- C. iSCSI
- D. Fibre Channel

**Correct Answer:** A

**QUESTION 10**

Which consideration is unnecessary for the PositivelyPeople application in the new environment?

- A. File security
- B. Secure remote access
- C. Access to legacy mainframe
- D. Support for secured print jobs

**Correct Answer:** C

**QUESTION 11**

Given the current desktop build process, what should an architect recommend on the new virtual platform for this environment while minimizing the number of required management servers?

- A. Continue with current process
- B. Use Ghost to clone a master image
- C. Use Machine Creation Services to clone a master image
- D. Use Provisioning Services servers to create a master target device

**Correct Answer:** C

**QUESTION 12**

Which two budgetary items should the architect consider to meet the needs of remote users in the new environment? (Choose two.)

- A. Microsoft licenses
- B. NetScaler infrastructure
- C. Additional mobile devices
- D. Two-factor authentication solution

**Correct Answer:** BD

**QUESTION 13**

Some management staff print large documents over WAN connections. What must the architect consider to optimize printing to a local printer from laptops?

- A. Configure session printers
- B. Configure Universal Print Server
- C. Disable 'Direct connection to print servers'
- D. Allow mapping to all client printers to session

**Correct Answer:** D

**QUESTION 14**

Which two options should the architect recommend to enable two-factor authentication for remote users? (Choose two.)

- A. Configure Citrix Single Sign-On.
- B. Configure LDAP authentication on NetScaler.
- C. Configure RADIUS authentication on NetScaler.
- D. Configure 'Username and Password' in StoreFront.

**Correct Answer:** BC

**QUESTION 15**

Which two business drivers are critical for the Contractors user group? (Choose two.)

- A. Printing security
- B. Secure remote access
- C. Granular security policies
- D. Support for mobile devices

**Correct Answer:** BC

**QUESTION 16**

Scenario: Legacy GPO policies should NOT be applied to users in the new environment. New GPOs should be configured to ensure maximum performance across all virtual applications and desktops.

Which two actions should the architect recommend to meet these requirements? (Choose two.)

- A. Enable loopback processing in Merge mode.
- B. Enable loopback processing in Replace mode.
- C. Apply the policy to the OUs containing the user accounts.
- D. Apply the policy to the domain root with a WMI filter excluding the Windows XP OS type.
- E. Apply the policy to the domain root with a deny ACL on the OU containing legacy machines.
- F. Apply the policy to the OUs containing the desktop OS machines' and server OS machines' computer accounts.

**Correct Answer:** BF

**QUESTION 17**

Which three user groups require remote access? (Choose three.)

- A. IT
- B. Call Center
- C. Human Resources
- D. Emergency Response Team
- E. Nurses, Imaging, and Radiology

**Correct Answer:** ACD

**QUESTION 18**

An architect is assessing the existing backup strategy and recommending changes to suit the new virtual desktop environment.

Which two critical components should the architect recommend for nightly backup, as they cannot be easily recreated in the event of a disaster? (Choose two.)

- A. User's Personal vDisks
- B. Pooled desktop master image
- C. Servers hosting StoreFront roles
- D. Servers hosting Delivery Controller roles
- E. SQL Server hosting the XenDesktop database

**Correct Answer:** AE

**QUESTION 19**

Which current infrastructure limitation prevents doctors in London from working remotely if the London datacenter shuts down unexpectedly?

- A. There are no roaming user profiles.
- B. There is no failover datacenter for London.
- C. There are no backups of the SQL Server databases.
- D. There is no disaster recovery plan for the mobile workforce.

**Correct Answer:** D

**QUESTION 20**

Contractors need a consistent environment to perform quality assurance testing of applications. Which two types of solutions should the architect recommend? (Choose two.)

- A. Random server OS machines
- B. Pooled desktop OS machines
- C. Dedicated desktop OS machines
- D. Pooled desktop OS machines with Personal vDisk

**Correct Answer:** AB

**QUESTION 21**

Scenario: An architect is designing a NetScaler solution that implements GSLB. The solution must provide StoreFront access through a single URL worldwide and maintain a highly available configuration globally as well as locally.

How many StoreFront servers are recommended to implement this configuration?

- A. Six, one site for each store
- B. Six, two in each datacenter
- C. Three, one in each datacenter
- D. Four, two in the primary and two in the backup datacenter

**Correct Answer:** B

**QUESTION 22**

Scenario: Personnel are being trained using a test XenDesktop site. They must be restricted to accessing this site only while on company premises.

Which StoreFront configuration should the architect recommend?

- A. Enable the Domain pass-through authentication method on the store.
- B. Disable the Pass-through from NetScaler authentication method on the store.
- C. Configure the StoreFront servers with a separate store for this site, NOT enabled for remote access.
- D. Install a certificate issued by the internal Windows Certificate Services server on the StoreFront servers.

**Correct Answer:** C

**QUESTION 23**

Which two design decisions should the architect recommend to improve the user experience? (Choose two.)

- A. Configure Clipboard policy
- B. Configure Drive encryption
- C. Configure Flash redirection
- D. Configure Media redirection

**Correct Answer:** CD

**QUESTION 24**

Which two manually performed tasks can be streamlined by implementing a Citrix environment? (Choose two.)

- A. Database backup

- B. Application patching
- C. Security assessment
- D. Certificate management
- E. Operating system installation

**Correct Answer:** BE

**QUESTION 25**

The company's HDX policies must apply to a pooled virtual desktop environment without affecting any virtual applications. How should an architect apply the HDX policies?

- A. By using a SmartAccess filter
- B. By using a client name policy filter
- C. By using a delivery group type policy filter
- D. By giving the virtual desktop policy a higher priority than the virtual application policy

**Correct Answer:** C

**QUESTION 26**

Scenario: HR staff have a requirement to print confidential information to USB-attached printers in their offices. Any printer model may be used for this purpose.

Which two recommended options should the architect consider for this solution? (Choose two.)

- A. Configuring 'Client printer names'
- B. Configuring 'Auto-create client printers'
- C. Configuring 'Universal print driver usage'
- D. Enabling 'Automatic installation of in-box printer drivers'

**Correct Answer:** BC

**QUESTION 27**

The architect should recommend a Universal License because it is required for \_\_\_\_\_. (Choose the phrase that correctly completes the sentence.)

- A. ICA Proxy
- B. SmartAccess
- C. two-factor authentication
- D. SSL access inside the network

**Correct Answer:** B

**QUESTION 28**

An architect recommends full SSL VPN connections for remote users. Which type of NetScaler license should be applied for these users?

- A. User
- B. Device
- C. Platform
- D. Universal

**Correct Answer:** D

**QUESTION 29**

Which action should an architect avoid recommending when designing a monitoring solution?

- A. Installing vendor-supplied tools to monitor physical hardware
- B. Installing Command Center to monitor NetScaler appliances
- C. Installing agents onto NetScaler appliances to monitor utilization
- D. Installing Citrix Director to monitor the XenDesktop environment

**Correct Answer:** C

**QUESTION 30**

An architect is explaining options for profile management. What is one issue that the architect must address in the current environment?

- A. Folder redirection is implemented.
- B. Roaming users have local profiles.
- C. Startup scripts are used in the environment.
- D. PositivelyFinance does NOT work with roaming profiles.

**Correct Answer:** D

**QUESTION 31**

Which tool should the architect use in preparation for migration to Windows Server 2012 to determine application compatibility and suitability for virtualization?

- A. AppDNA
- B. App-V Sequencer
- C. EdgeSight for End Points
- D. Windows Upgrade Advisor

**Correct Answer:** A

**QUESTION 32**

All nurses currently use Windows XP workstations to access critical medical applications and require different applications depending on their role. Which two delivery models meet the nurses' requirements? (Choose two.)

- A. Local VM deployment with streamed applications

- B. Streamed VHD deployment with streamed applications
- C. Hosted server OS deployment with locally installed applications
- D. Hosted desktop OS deployment with locally installed applications

**Correct Answer:** CD

**QUESTION 33**

In the new environment, the PositivelyFinance application will be deployed as a server OS- hosted application. Which two policy settings should an architect recommend to prevent data leakage from the PositivelyFinance application? (Choose two.)

- A. HDX policy setting with Client drive mapping set to 'Prohibited'
- B. HDX policy setting with Client Clipboard Redirection set to 'Prohibited'
- C. HDX policy setting with File redirection on Client Network drives set to 'Prohibited'
- D. Active Directory group policy with the Do not allow clipboard redirection setting set to 'Disabled'
- E. Active Directory group policy with the Prevent access to drives setting set to 'Restrict all drives'

**Correct Answer:** AB

**QUESTION 34**

An architect is evaluating the user profile management solution for the desktop and application virtualization solution. Which two pieces of information should the architect collect? (Choose two.)

- A. User time zone
- B. User profile size
- C. Installed language pack
- D. Client device CPU/RAM
- E. Application compatibility of profile type

**Correct Answer:** BE

**QUESTION 35**

Which IOPS figures must an architect take into account when determining the IOPS requirements for a user group?

- A. logical, logon, and raw
- B. functional, logoff, and boot
- C. steady state, boot, and raw
- D. steady state, logon, and boot

**Correct Answer:** D

**QUESTION 36**

Which three statements are true regarding the Radiology group? (Choose three.)

- A. Mobility is important to Radiology users.
- B. Mobility is unimportant to Radiology users.
- C. Virtualization resource requirements are high.
- D. Smooth Roaming is important to Radiology users.
- E. Virtualization resource requirements are moderate.
- F. Smooth Roaming is unimportant to Radiology users.

**Correct Answer:** BCD

**QUESTION 37**

An architect recommends using the monitoring function of Citrix Director to determine if users can connect to applications. Which Windows service should the architect also include in the monitoring solution?

- A. Citrix Configuration Service on the Delivery Controller
- B. Citrix Configuration Replication on the StoreFront server
- C. World Wide Web Publishing Service on the StoreFront server
- D. World Wide Web Publishing Service on the server OS machine

**Correct Answer:** C

**QUESTION 38**

An architect is designing a solution that minimizes the storage footprint by utilizing thin provisioning in the datacenter. Which solution should the architect recommend for XenServer shared storage?

- A. NFS
- B. CIFS
- C. iSCSI
- D. Fibre Channel

**Correct Answer:** A

**QUESTION 39**

Scenario: The company is considering replacing the Windows XP computers with new devices as part of the new solution. The new devices should require minimal support and administration, while providing a centrally managed desktop solution.

Which two methods should an architect consider to meet these requirements? (Choose two.)

- A. Client OS desktop delivery group accessed from thin-client devices by using Citrix Receiver
- B. Server OS desktop delivery group accessed from thin-client devices by using Citrix Receiver
- C. Client OS desktop delivery group accessed from Windows-based physical desktops by using Citrix Receiver
- D. Server OS application delivery group accessed from Windows-based physical desktops by using Citrix Receiver

**Correct Answer:** AB

**QUESTION 40**

Scenario: Some contractors require access to various corporate applications. They must also be able to install their own applications within the environment for testing purposes.

Which two delivery methods fulfill these requirements? (Choose two.)

- A. Hosted server OS with Profile Management enabled
- B. Pooled hosted desktop OS with Personal vDisk enabled
- C. Hosted server OS with persistent server operating system
- D. Assigned hosted desktop OS with persistent desktop operating system

**Correct Answer:** BD

**QUESTION 41**

An architect is recommending an antivirus policy for Provisioning Services servers that are being used to provision pooled desktops. Which two options should the architect recommend for optimal performance? (Choose two.)

- A. Enable scan on read
- B. Prohibit write cache scanning
- C. Increase scheduled scanning frequency
- D. Exclude scanning of the target device drivers

**Correct Answer:** BD

**QUESTION 42**

An architect needs to design a solution that optimizes resource usage for Call Center users. How do server OS machines achieve this goal?

- A. By offering optimal performance
- B. By providing rapid application rollouts
- C. By ensuring the greatest security level by design
- D. By accommodating high user density on each server

**Correct Answer:** D

**QUESTION 43**

The company's security officer has stated that for compliance reasons, all internal and external network traffic must be encrypted.

Which additional type of encryption should the architect recommend?

- A. SecureICA
- B. IPsec
- C. SSL and SecureICA
- D. L2TP

**Correct Answer:** C

**QUESTION 44**

The company's security officer has stated that for compliance reasons, all internal and external network traffic must be encrypted.

How should SecureICA be implemented?

- A. By using NetScaler
- B. By enabling SecureICA on delivery groups
- C. By implementing an Active Directory group policy to configure IPsec
- D. By installing an SSL certificate in the master image

**Correct Answer:** B

**QUESTION 45**

The company's security officer has stated that for compliance reasons, all internal and external network traffic must be encrypted.

How should IPsec be implemented?

- A. By using NetScaler
- B. By implementing secure delivery groups
- C. By implementing an Active Directory group policy
- D. By configuring a local IPsec policy in the master image

**Correct Answer:** C

**QUESTION 46**

The company's security officer has stated that for compliance reasons, all internal and external network traffic must be encrypted.

How should SSL be implemented?

- A. By installing certificates on Citrix infrastructure components
- B. By configuring an Active Directory group policy to distribute SSL certificates
- C. By installing a certificate authority server in the DMZ
- D. By installing an SSL certificate in the master image

**Correct Answer:** A

**QUESTION 47**

The company's security officer has stated that for compliance reasons, all internal and external network traffic must be encrypted.

How should L2TP be implemented?

- A. By using NetScaler
- B. By implementing secure delivery groups
- C. By implementing an Active Directory group policy to configure L2TP
- D. By installing a Windows Server operating system with Routing and Remote Access Service

**Correct Answer:** C

**QUESTION 48**

What are the benefits of using SecureICA to meet the company's compliance requirements?

- A. It encrypts internal ICA traffic.
- B. It encrypts ICA traffic from remote users.
- C. It is required to enable the SSL Relay service.
- D. It complies with industry-standard SSL encryption requirements.

**Correct Answer:** B

**QUESTION 49**

What are the benefits of using IPsec to meet the company's compliance requirements?

- A. It encrypts internal network traffic.
- B. It encrypts ICA traffic from remote users.
- C. It is required to enable the SSL Relay service.
- D. It complies with industry-standard IPsec encryption requirements.

**Correct Answer:** A

**QUESTION 50**

What are the benefits of using SSL to meet the company's compliance requirements?

- A. It eliminates the need to distribute an internal root certificate.
- B. It encrypts end-to-end traffic from remote users.
- C. It is required to enable the SSL Relay service.
- D. It provides secure internal and external network communication.

**Correct Answer:** D

**QUESTION 51**

What are the benefits of using SSL to meet the company's compliance requirements?

- A. It consumes lower CPU resources than other encryption technologies.
- B. It is supported on industry-standard devices.
- C. It is required to enable the SSL Relay service.
- D. It enables two-factor authentication.

**Correct Answer:** B

**QUESTION 52**

What are the benefits of using L2TP to meet the company's compliance requirements?

- A. It encrypts internal ICA traffic.
- B. It encrypts ICA traffic from remote users.
- C. It is required to enable the SSL Relay service.
- D. It complies with industry-standard SSL encryption requirements.

**Correct Answer:** B

**QUESTION 53**

Scenario: The company needs to ensure that the provisioning traffic does NOT interfere with the existing PXE solution. The Provisioning Services servers will be connected to a 10 Gbps network.

What should the architect recommend?

- A. Multi-homed Provisioning Services servers on existing server VLANs
- B. Multi-homed Provisioning Services server on dedicated VLANs
- C. Multi-homed Provisioning Services server on a dedicated physical switch
- D. Multi-homed Provisioning Services server with NetScaler App Firewall

**Correct Answer:** B

**QUESTION 54**

Scenario: The company needs to ensure that the provisioning traffic does NOT interfere with the existing PXE solution. The Provisioning Services servers will be connected to a 10 Gbps network.

How should the architect recommend that a highly available multi-homed Provisioning Services server configuration be implemented?

- A. By installing multiple NICs in the Provisioning Services server in each datacenter
- B. By deploying one Provisioning Services server in the primary and one in the secondary datacenter
- C. By deploying two Provisioning Services servers in the same datacenter
- D. By using NetScaler with GSLB to load balance the Provisioning Services servers in each datacenter

**Correct Answer:** D

**QUESTION 55**

Scenario: The company needs to ensure that the provisioning traffic does NOT interfere with the existing PXE solution. The Provisioning Services servers will be connected to a 10 Gbps network.

How should the architect implement a highly available Provisioning Services server on dedicated VLANs?

- A. By installing multiple NICs in one Provisioning Services server in each datacenter
- B. By deploying one Provisioning Services server in the primary and one in the secondary datacenter
- C. By deploying two Provisioning Services servers in each datacenter
- D. By using NetScaler with GSLB to load balance the Provisioning Services servers in each datacenter

**Correct Answer: C**

**QUESTION 56**

Scenario: The company needs to ensure that the provisioning traffic does NOT interfere with the existing PXE solution. The Provisioning Services servers will be connected to a 10 Gbps network.

How should the architect implement a highly available Provisioning Services server on dedicated physical switches?

- A. By installing multiple NICs in one Provisioning Services server in each datacenter
- B. By deploying one Provisioning Services server on a dedicated switch in the primary and secondary datacenters
- C. By deploying two Provisioning Services servers on dedicated switches in each datacenter
- D. By using NetScaler with GSLB to load balance the Provisioning Services servers on dedicated switches in each datacenter

**Correct Answer: B**

**QUESTION 57**

Scenario: The company needs to ensure that the provisioning traffic does NOT interfere with the existing PXE solution. The Provisioning Services servers will be connected to a 10 Gbps network.

How should the architect implement a highly available Provisioning Services server by using NetScaler App Firewall?

- A. By implementing NetScaler App Firewall policies
- B. By deploying GSLB on NetScaler
- C. By deploying TFTP load balancing using NetScaler
- D. By load balancing Provisioning Services streaming services using NetScaler

**Correct Answer: A**

**QUESTION 58**

Scenario: The company needs to ensure that the provisioning traffic does NOT interfere with the existing PXE solution. The Provisioning Services servers will be connected to a 10 Gbps network.

How do multi-homed Provisioning Services servers help the company secure streaming traffic?

- A. Multiple NICs separate disk and user data traffic.
- B. Multiple NICs enable disk data traffic to be encrypted with IPsec.
- C. Multiple NICs allow the necessary TCP offload settings to be configured on the streaming NIC.
- D. Multiple NICs provide multiple IP addresses that can be dedicated to streaming traffic.

**Correct Answer: A**

**QUESTION 59**

Scenario: The company needs to ensure that the provisioning traffic does NOT interfere with the existing PXE solution. The Provisioning Services servers will be connected to a 10 Gbps network.

How does using a dedicated VLAN help the company secure streaming traffic?

- A. Dedicated VLANs ensure streaming traffic is NOT visible to other VLANs in the datacenter.
- B. Dedicated VLANs enable streaming traffic to be encrypted with IPsec.
- C. Dedicated VLANs allow the necessary TCP offload settings to be configured on the streaming NIC.
- D. Dedicated VLANs provide multiple IP addresses that can be dedicated to streaming traffic.

**Correct Answer: A**

**QUESTION 60**

Scenario: The company needs to ensure that the provisioning traffic does NOT interfere with the existing PXE solution. The Provisioning Services servers will be connected to a 10 Gbps network.

How does using a dedicated switch help the company secure streaming traffic?

- A. Dedicated switches enable streaming traffic to be encrypted with IPsec.
- B. Dedicated switches allow the necessary TCP offload settings to be configured on the streaming NIC.
- C. Dedicated switches provide multiple IP addresses that can be dedicated to streaming traffic.

**Correct Answer: B**

**QUESTION 61**

Scenario: The company needs to ensure that the provisioning traffic does NOT interfere with the existing PXE solution. The Provisioning Services servers will be connected to a 10 Gbps network.

How does using a dedicated switch help the company secure streaming traffic?

- A. Dedicated VLANs ensure streaming traffic is NOT visible to other VLANs in the datacenter.
- B. Dedicated switches enable streaming traffic to be encrypted with IPsec.
- C. Dedicated switches allow the necessary TCP offload settings to be configured on the streaming NIC.
- D. Dedicated switches enable isolation of Spanning Tree instances.

**Correct Answer:** C

**QUESTION 62**

Scenario: The company needs to ensure that the provisioning traffic does NOT interfere with the existing PXE solution. The Provisioning Services servers will be connected to a 10 Gbps network.

How does using NetScaler App Firewall help the company secure streaming traffic?

- A. NetScaler App Firewall detects network-based threats at the application layer.
- B. NetScaler App Firewall enables streaming traffic to be encrypted with IPsec.
- C. NetScaler App Firewall removes the need for Access Control Lists on switches.
- D. NetScaler App Firewall enables isolation of streaming traffic from other VLANs.

**Correct Answer:** D

**QUESTION 63**

Scenario: The architect for the company has identified that virtualizing the entire server infrastructure will provide the best return on investment (ROI) and lowest maintenance costs for the new infrastructure. In order to proceed with this recommendation, a monitoring strategy must be put in place to ensure that the virtualization platform does NOT become overloaded. Which virtualization component should an architect monitor to identify virtual desktop bottlenecks?

- A. XenServer hosts
- B. Delivery Controllers
- C. Provisioning Services servers
- D. Server OS machines

**Correct Answer:** A

**QUESTION 64**

Scenario: The architect for the company has identified that virtualizing the entire server infrastructure will provide the best return on investment (ROI) and lowest maintenance costs for the new infrastructure. In order to proceed with this recommendation, a monitoring strategy must be put in place to ensure that the virtualization platform does NOT become overloaded.

How can the architect identify if the XenServer hosts are the source of a bottleneck?

- A. Identify if the CPU consumption is above 85%
- B. Identify if memory consumption is above 90%.
- C. Identify if disk queue length increases above zero.
- D. Identify if network utilization rises above 50%.

**Correct Answer:** A

**QUESTION 65**

How can the architect identify if the Delivery Controller is the source of a bottleneck?

- A. Identify excessive memory and network utilization.
- B. Identify excessive CPU consumption.
- C. Identify excessive disk and network I/O.
- D. Identify excessive disk I/O and page file utilization.

**Correct Answer:** B

**QUESTION 66**

How can the architect identify if the Provisioning Services servers are the source of a bottleneck?

- A. Identify excessive CPU and memory consumption.
- B. Identify excessive memory and network utilization.
- C. Identify excessive CPU and network I/O.
- D. Identify excessive disk I/O and page file utilization.

**Correct Answer:** C

**QUESTION 67**

How can the architect identify if the server OS machines are the source of a bottleneck?

- A. Identify excessive CPU and memory consumption.
- B. Identify excessive memory and network utilization.
- C. Identify excessive disk and network I/O.
- D. Identify excessive disk I/O and page file utilization.

**Correct Answer:** D

**QUESTION 68**

Why should CPU consumption above 85% be used to identify bottlenecks?

- A. At least 20% of resources should be available at all times.
- B. XenServer host CPU utilization above 85% causes excessive context switching.
- C. XenServer host reserves 20% of all CPU for context switching.
- D. Running XenCenter will consume 20% of all CPU resources.

**Correct Answer:** A



To Read the [Whole Q&As](#), please purchase the [Complete Version](#) from [Our website](#).

# Trying our product !



- ★ **100%** Guaranteed Success
- ★ **100%** Money Back Guarantee
- ★ **365 Days** Free Update
- ★ **Instant Download** After Purchase
- ★ **24x7** Customer Support
- ★ Average **99.9%** Success Rate
- ★ More than **69,000** Satisfied Customers Worldwide
- ★ Multi-Platform capabilities - **Windows, Mac, Android, iPhone, iPod, iPad, Kindle**

## Need Help

Please provide as much detail as possible so we can best assist you.

To update a previously submitted ticket:



 <b>One Year Free Update</b> <p>Free update is available within One Year after your purchase. After One Year, you will get 50% discounts for updating. And we are proud to boast a 24/7 efficient Customer Support system via Email.</p>	 <b>Money Back Guarantee</b> <p>To ensure that you are spending on quality products, we provide 100% money back guarantee for 30 days from the date of purchase.</p>	 <b>Security &amp; Privacy</b> <p>We respect customer privacy. We use McAfee's security service to provide you with utmost security for your personal information &amp; peace of mind.</p>
---	---	--

[Guarantee & Policy](#) | [Privacy & Policy](#) | [Terms & Conditions](#)

Any charges made through this site will appear as Global Simulators Limited.

All trademarks are the property of their respective owners.

Copyright © 2004-2015, All Rights Reserved.