

# 1Y0-301<sup>Q&As</sup>

Deploying Citrix XenDesktop 7.6 Solutions

## Pass Citrix 1Y0-301 Exam with 100% Guarantee

Free Download Real Questions & Answers **PDF** and **VCE** file from:

<https://www.certbus.com/1y0-301.html>

100% Passing Guarantee  
100% Money Back Assurance

Following Questions and Answers are all new published by Citrix  
Official Exam Center

- ⚙ **Instant Download** After Purchase
- ⚙ **100% Money Back** Guarantee
- ⚙ **365 Days** Free Update
- ⚙ **800,000+** Satisfied Customers



### QUESTION 1

Scenario: A XenDesktop deployment with 200 virtual desktops has a host connection to a single XenServer pool configured for thin provisioning. A Citrix Engineer has been instructed to implement IntelliCache.

Which steps must the engineer take to meet the requirements stated in the scenario?

- A. Modify the existing host connection and enable IntelliCache.
- B. Create a new resource using the existing host connection and enable IntelliCache.
- C. Delete the existing resource, create a new one with the same name and enable IntelliCache.
- D. Delete the existing host connection, create a new connection to the same pool and enable IntelliCache.

Correct Answer: B Section: (none)

---

### QUESTION 2

A Personal vDisk can be \_\_\_\_\_ and \_\_\_\_\_. (Choose the two correct phrases to complete the sentence.)

- A. used with servers and desktops
- B. placed on a different storage than the write cache
- C. used for application installations only and NOT drivers
- D. used with a third-party user profile management solution
- E. used with Provisioning Services to stream to physical and virtual machines

Correct Answer: BD Section: (none)

---

### QUESTION 3

How should a Citrix Engineer configure Citrix Director to support user search in a multi- forest Active Directory environment?

- A. Create a separate monitoring database.
- B. Modify the application settings of the Citrix Director website in the IIS console.
- C. Install at least one Delivery Controller in each forest and use DNS round-robin.
- D. Install at least one Citrix Director server in each forest and load balance them with NetScaler.

Correct Answer: B Section: (none)

---

### QUESTION 4

Which PowerShell cmdlet will reset StoreFront to the initial factory settings once the StoreFront server is removed from an existing server group?

- A. Clear-DSConfiguration
- B. Clear-WebConfiguration
- C. Remove-SFServiceMetadata
- D. Remove-SFServerFromCluster

Correct Answer: A Section: (none)

---

#### QUESTION 5

Which mode should a database be configured for when using a SQL mirrored solution with Provisioning Services?

- A. High-performance mode (Synchronous)
- B. High-performance mode (Asynchronous)
- C. High-safety mode with a witness (Synchronous)
- D. High-safety mode with a witness (Asynchronous)

Correct Answer: C Section: (none)

---

#### QUESTION 6

Where should a Citrix Engineer set up a restart schedule for a pool of Server OS machines?

- A. Policy within Citrix Studio
- B. Delivery Group properties
- C. Virtual machine properties
- D. Machine catalog properties

Correct Answer: B Section: (none)

---

#### QUESTION 7

Scenario: A Citrix Engineer is using the XenApp Services Support URL to enable support for legacy clients. The services URL is configured with explicit authentication. The engineer needs to configure StoreFront to support pass-through for a new group of legacy clients.

How could the engineer configure pass-through authentication for the new group of legacy clients while maintaining explicit authentication for existing legacy clients?

- A. Add the pass-through authentication method in the site configuration file.

- B. Change the services support site authentication method to pass-through.
- C. Create a new store and set pass-through authentication as the '\\LogonMethod\\' on the services URL.
- D. Add the pass-through authentication method to the legacy services URL using the StoreFront console.

Correct Answer: C Section: (none)

## QUESTION 8

### CORRECT TEXT

Scenario: A Citrix Engineer at CCH needs to provide owners of a specific application with delegated administrative rights to perform specific tasks on their application and the servers hosting their application. The application owners need permissions to do the following: Add and remove the application from a Delivery Group Create and delete applications Edit application properties Add and remove the application from Maintenance Mode Perform power operations on Windows Server machines

Permissions should be specifically granted to the CCH\MedAppAdmins group and assigned to a custom scope.

Tasks:

1.

Create a custom role named MedAppAdmins.

2.

Assign only the required permissions to the newly created role.

3.

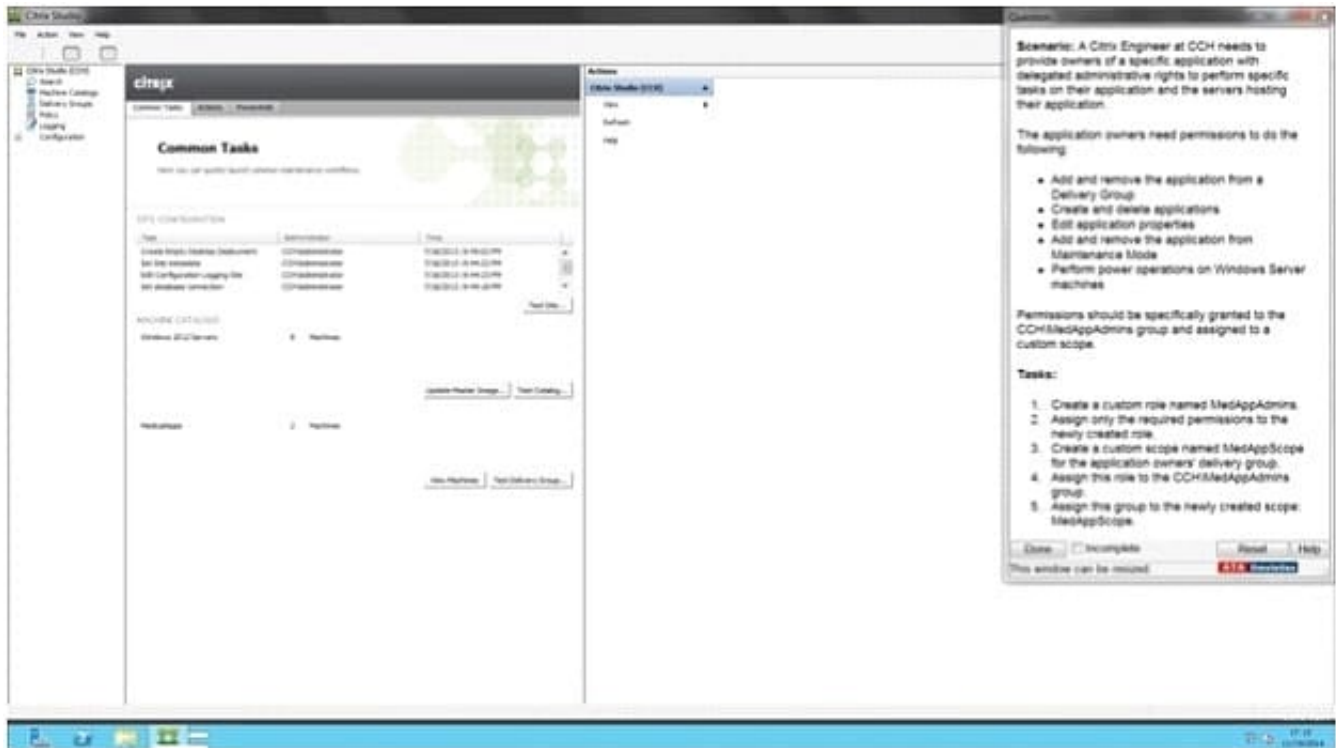
Create a custom scope named MedAppScope for the application owners\\' delivery group.

4.

Assign this role to the CCH\MedAppAdmins group.

5.

Assign this group to the newly created scope: MedAppScope.



A.

Correct Answer: A Section: (none)

Answer: Find the solution with all steps below. To create a custom role

1.

In Studio, click Configuration > Administrators in the left pane, then click the Roles tab in the middle pane. A list of existing roles appears.

2.

In the Actions pane, click Create new Role.

3.

Type a name and description for the role.

4.

For each object type that you want this role to have permissions for, select the object type, then select the permissions.

- Add and remove the application from a Delivery Group
- Create and delete applications
- Edit application properties
- Add and remove the application from Maintenance Mode
- Perform power operations on Windows Server machines

1. Click Save. To create a scope

1.

In Studio, click Configuration > Administrators in the left pane, then click the Scopes tab in the middle pane. A list of existing scopes appears.

2.

In the Actions pane, click Create new Scope.

3.

Type a name (for example, '\\Sales\\') and a description (for example, '\\Delivery Groups used by Sales\\') for the scope.

4.

Select object types or specific objects:

a.

To select all objects of a particular type (for example, Delivery Groups), select the object type.

b.

To select specific objects, expand the type, then select the individual objects (for example, individual Delivery Groups used by the Sales team).

5. Click Save.

---

## QUESTION 9

Scenario: A Citrix Engineer needs to provide virtual desktop access to branch office users by deploying NetScaler to an existing Citrix StoreFront environment. Active Directory, along with RSA tokens, will be used for authentication on the NetScaler.

Which two authentication servers should the engineer configure on the NetScaler? (Choose two.)

A. Local

B. LDAP

C. RADIUS

D. TACACS

Correct Answer: AD Section: (none)

---

## QUESTION 10

Scenario: A Citrix Engineer needs to deploy Citrix Receiver using a custom Client Name value. The engineer uses the install command CitrixReceiver /CLIENT\_NAME=Terminal. A user later renames the computer and the custom client

name is lost.

Which additional install parameter could the engineer have used to prevent the custom client name from being lost?

- A. SELFSERVICEMODE=FALSE
- B. ALLOW\_CLIENTHOSTEDAPPSURL
- C. CLIENT\_NAME=%COMPUTERNAME%
- D. ENABLE\_DYNAMIC\_CLIENT\_NAME=NO

Correct Answer: D Section: (none)

---

#### QUESTION 11

Which statement accurately describes the purpose of StoreFront beacons?

- A. Determine which servers are up in a highly available StoreFront server group.
- B. Sent to XenApp and XenDesktop Delivery Controllers to determine which resources a user has access to.
- C. Allow StoreFront to automatically update receiver clients when a beacon from an old receiver client is received.
- D. Determine whether a user is connected to a local network or connecting from the Internet so that the appropriate connection details can be passed to Citrix Receiver.

Correct Answer: D Section: (none)

---

#### QUESTION 12

A Citrix Engineer must change the write cache method from '\\Cache on device hard drive\\' to '\\Cache in device RAM with overflow on hard disk\\'.

To assist in determining the appropriate amount of RAM cache required, what would the engineer need to check to determine the current write cache size?

- A. The size of the local pagefile
- B. The size of the writecache file in the vDisk store
- C. The size of the .vdiskcache file on the device hard disk
- D. The size of the RAM and Pagefile combined in Task Manager

Correct Answer: C Section: (none)

---

#### QUESTION 13

Scenario: A Citrix Engineer added a second Provisioning Services server to an existing Provisioning Services site for high availability. The engineer copied the virtual hard drive (VHD) files to the store on the new Provisioning Services

server. After doing that, the second server stopped showing the disk as '\\available\\' under replication status. Why is vDisk replication status failing for the new server?

- A. The .pvp file has NOT been copied
- B. The vDisk is still in Standard mode.
- C. The manifest file has NOT been created.
- D. The disk has to be replicated through DFSR.

Correct Answer: A Section: (none)

---

#### QUESTION 14

Scenario: The current XenServer pool master needs to be retired. A Citrix Engineer is preparing to transfer the pool master role to another host.

Which command should the engineer run to transition the pool master role to a different host in the resource pool that is in a running state?

- A. xe pool-recover-slaves
- B. xe pool-designate-new-master
- C. xe pool-emergency-reset-master
- D. xe pool-emergency-transition-to-master

Correct Answer: B Section: (none)

---

#### QUESTION 15

How can a Citrix Engineer ensure that external users connect only to specific desktops through a NetScaler Gateway?

- A. Create a session policy assigned to users.
- B. Create a StoreFront VIP on NetScaler Gateway.
- C. Create an access policy assigned to a Delivery Group.
- D. Create a StoreFront filter to show only authorized desktops

Correct Answer: C Section: (none)

[Latest 1Y0-301 Dumps](#)

[1Y0-301 VCE Dumps](#)

[1Y0-301 Braindumps](#)